

# 2023 Jeep Wrangler Unlimited Rubicon 4X4 SKY TOP,LIFTED,BUMPERS,LED'S

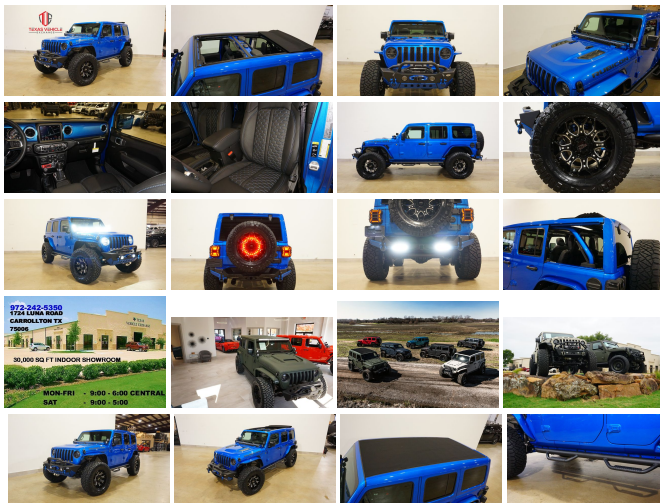
View this car on our website at [tveauto.com/7173899/ebrochure](https://tveauto.com/7173899/ebrochure)



Our Price **\$81,900**

## Specifications:

<b>Year:</b>	2023
<b>VIN:</b>	1C4HJXFG4PW581863
<b>Make:</b>	Jeep
<b>Stock:</b>	581863
<b>Model/Trim:</b>	Wrangler Unlimited Rubicon 4X4 SKY TOP,LIFTED,BUMPERS,LED'S
<b>Condition:</b>	Pre-Owned
<b>Body:</b>	SUV
<b>Exterior:</b>	Hydro Blue Pearlcoat
<b>Engine:</b>	ENGINE: 3.6L V6 24V VVT ETORQUE UPG I
<b>Interior:</b>	Black Leather
<b>Transmission:</b>	TRANSMISSION: 8-SPEED AUTOMATIC (850RE)
<b>Mileage:</b>	282
<b>Drivetrain:</b>	4 Wheel Drive
<b>Economy:</b>	City 17 / Highway 23



NATION WIDE FINANCING

SUBMIT CREDIT APP [WWW.TVEAUTO.COM](https://www.tveauto.com)

OR CALL 972-242-5350

**"HYDRO BLUE PEARL COAT EDITION"**

CUSTOM BUILT 2023 JEEP WRANGLER JL  
UNLIMITED RUBICON 4X4 WITH 25R  
PACKAGE

**UPGRADES INCLUDE:**

- \* HYDRO BLUE PEARL COAT
- \* SKY ONE-TOUCH POWER TOP WITH REMOVABLE REAR QUARTER WINDOWS
- \* CUSTOM ALEA BLACK LEATHER WITH BLUE STITCHING
- \* FACTORY REMOTE START
- \* REMOTE PROXIMITY KEYLESS ENTRY
- \* COLD WEATHER GROUP
- \* SAFETY GROUP
- \* FACTORY 8.4 INCH TOUCH SCREEN NAVIGATION WITH HD AM/FM/SIRIUS STEREO & ALPINE PREMIUM AUDIO SYSTEM
- \* FACTORY BACK-UP CAMERA
- \* U-CONNECT
- \* SMITTYBILT XRC GEN 2 FRONT BUMPER WITH LED FOGLIGHTS
- \* FRONT D-RINGS & ISOLATORS (HYDRO BLUE)
- \* SMITTYBILT NEW GEN 3 "X20" 10,000 LB WATERPROOF AND WIRELESS CONTROL WINCH WITH SYNTHETIC ROPE
- \* FACTOR 55 PROLINK (BLACK)
- \* FACTORY LED HEADLIGHTS
- \* RUGGED RIDGE BLACK HEADLIGHT GUARDS
- \* MOPAR 10TH ANNIVERSARY RUBICON POWER DOME HOOD
- \* DV8 OFF ROAD JL SLIM STEEL FENDER FLARES (PAINTED TO MATCH)
- \* DV8 OFF ROAD FRONT & REAR INNER FENDERS
- \* RUBICON EXPRESS 2.5" LIFT KIT WITH TERAFLEX FALCON SHOCKS
- \* TERAFLEX FALCON STABILIZER KIT

- \* SUSPENSION PARTS PAINTED (HYDRO BLUE)
- \* VOSWITCH 6 CHANNEL CUSTOM INTEGRATED SWITCH PANEL
- \* 50" LED LIGHT BAR AND 4 RIGID INDUSTRIES DUALY D2 LED PILLAR LIGHTS (LIGHT BRACKETS PAINTED TO MATCH)
- \* SMITTYBILT BLACK TUBULAR STEPS
- \* EVOLUTION 2 BLACK LED TAIL LIGHTS
- \* RUGGED RIDGE BLACK TAIL LIGHT GUARDS
- \* RUGGED RIDGE SPARTACUS HD HINGE KIT
- \* RUGGED RIDGE LED THIRD BRAKE LIGHT RING
- \* SMITTYBILT XRC GEN 2 REAR BUMPER WITH LED LIGHTS & REAR PARK DISTANCE SENSORS
- \* REAR D-RINGS & ISOLATORS (HYDRO BLUE)
- \* MAGNAFLOW BLACK SERIES EXHAUST SYSTEM
- \* ALL WEATHER FLOOR MATS
- \* TAZER JL PROGRAMMER WITH SPEEDOMETER CALIBRATION
- \* 20" MOTO METAL GLOSS BLACK & MILLED "MO808 SNIPER" WHEELS
- \* BRAND NEW NITTO RIDGE GRAPPLER 37X13.50R/20 TIRES

**WE BUILD EVERY JEEP WITH PRIDE! DO NOT HESITATE TO CALL US WITH THIS JEEP BUILD. WE CAN MAKE CHANGES TO THIS JEEP BUILD OR CUSTOM BUILD ANY JEEP TO YOUR PREFERENCE. GIVE US A CALL @ 972-242-5350 OR STOP BY FOR A TEST DRIVE. 1724 LUNA RD IN**

**CARROLLTON - 2 MILES NORTH OF 635.**







2023 Jeep Wrangler Unlimited Rubicon 4X4 SKY TOP,LIFTED,BUMPERS,LED'S  
 Texas Vehicle Exchange - 972-242-5350 - View this car on our website at [veauto.com/7173899/ebrochure](http://veauto.com/7173899/ebrochure)

**Vehicle History Report : as Of 07/21/2024**



**Snapshot**

**2023 JEEP WRANGLER RUBICON**

-  No accidents or damage reported to CARFAX
-  1 Service history record
-  CARFAX 1-Owner vehicle
-  Personal vehicle
-  Last owned in Texas
-  10 Last reported odometer reading



**FREE CARFAX Report**

See the full CARFAX Report for additional information

\*carfax Snapshot is a reflection of available information on the date the report was pulled. carfax is constantly being updated with new information and is subject to change at any time.

**Our Location :**



2023 Jeep Wrangler Unlimited Rubicon 4X4 SKY TOP,LIFTED,BUMPERS,LED'S  
 Texas Vehicle Exchange - 972-242-5350 - View this car on our website at [veauto.com/7173899/ebrochure](http://veauto.com/7173899/ebrochure)

**Installed Options**

**Interior**

- 6-Way Driver Seat -inc: Manual Recline, Height Adjustment, Fore/Aft Movement and Manual Lumbar Support
- Front Seats w/Cloth Back Material and Manual Driver Lumbar
- Full Carpet Floor Covering -inc: Carpet Front And Rear Floor Mats
- Gauges -inc: Speedometer, Odometer, Voltmeter, Oil Pressure, Engine Coolant Temp, Tachometer, Inclinometer, Altimeter, Oil Temperature, Engine Hour Meter, Trip Odometer and Trip Computer
- Power 1st Row Windows w/Driver And Passenger 1-Touch Down
- Power Door Locks w/Autolock Feature
- Power Rear Windows and Removable 3rd Row Windows
- Premium Cloth Low-Back Bucket Seats- Proximity Key For Doors And Push Button Start

**Option Packages**

**Factory Installed Packages**

- ENGINE: 3.6L V6 24V VVT ETORQUE UPG I**  
 -inc: 600 Amp Maintenance Free Battery, 48V Belt Starter Generator, Delete Alternator
- TRANSMISSION: 8-SPEED AUTOMATIC (850RE)**  
 -inc: Selec-Speed Control \$4,250
- COLD WEATHER GROUP**  
 -inc: Heated Steering Wheel, Heated Front Seats. Leather Wrapped Steering Wheel \$1,395

- Remote Keyless Entry w/Integrated Key Transmitter, Illuminated Entry and Panic Button
- Trip Computer- 2 12V DC Power Outlets
- 2 12V DC Power Outlets and 1 120V AC Power Outlet - 2 Seatback Storage Pockets
- 4-Way Passenger Seat -inc: Manual Recline and Fore/Aft Movement
- 4G LTE Wi-Fi Hot Spot Mobile Hotspot Internet Access
- 60-40 Folding Split-Bench Front Facing Fold Forward Seatback Premium Cloth Rear Seat
- Air Filtration- Analog Appearance- Cargo Space Lights
- Carpet Floor Trim, Carpet And Rubber Mat- Compass
- Cruise Control w/Steering Wheel Controls- Day-Night Auto-Dimming Rearview Mirror
- Delayed Accessory Power
- Driver And Passenger Visor Vanity Mirrors w/Driver And Passenger Illumination
- Fade-To-Off Interior Lighting- Front And Rear Map Lights
- Front Center Armrest w/Storage
- Full Floor Console w/Locking Storage, 2 12V DC Power Outlets and 1 120V AC Power Outlet
- Garage Door Transmitter- HVAC -inc: Console Ducts- Illuminated Front Cupholder
- Illuminated Rear Cupholder
- Instrument Panel Bin, Dashboard Storage, Driver / Passenger And Rear Door Bins
- Interior Trim -inc: Colored Instrument Panel Insert, Metal-Look Door Panel Insert, Metal-Look Console Insert and Metal-Look Interior Accents
- Leatherette Steering Wheel- Locking Cargo Area Concealed Storage- Locking Glove Box
- Manual Adjustable Front Head Restraints and Foldable Rear Head Restraints
- Manual Tilt/Telescoping Steering Column- Outside Temp Gauge- Perimeter Alarm
- Redundant Digital Speedometer- Sentry Key Immobilizer- Smart Device Integration
- Systems Monitor- Tracker System- Urethane Gear Shifter Material
- Voice Activated Dual Zone Front Automatic Air Conditioning

## Exterior

- Auto On/Off Aero-Composite Halogen Daytime Running Headlamps w/Delay-Off
- Black Front Bumper w/2 Tow Hooks- Black Power Heated Side Mirrors w/Manual Folding
- Black Rear Bumper w/1 Tow Hook- Front Differential Electronic Lock w/Axle Disconnect
- Front Fog Lamps- Manual Convertible Top w/Fixed Roll-Over Protection
- Tailgate/Rear Door Lock Included w/Power Door Locks
- Tires: LT285/70R17C BSW Off-Road- Wheels: 17" x 7.5" Machined/Painted Black
- Aluminum Spare Wheel- Black Door Handles- Black Side Windows Trim
- Black Wheel Well Trim and Black Fender Flares- Body-Color Grille w/Colored Accents
- Clearcoat Paint w/Badging- Conventional Rear Cargo Access- Deep Tinted Glass
- Full-Size Spare Tire Mounted Outside Rear
- Galvanized Steel/Aluminum/Magnesium Panels- Non-Lock Fuel Cap w/o Discriminator
- Removable Rear Window- Variable Intermittent Wipers

## Safety

- 6-Way Driver Seat -inc: Manual Recline, Height Adjustment, Fore/Aft Movement and Manual Lumbar Support
- Front Seats w/Cloth Back Material and Manual Driver Lumbar
- Full Carpet Floor Covering -inc: Carpet Front And Rear Floor Mats
- Gauges -inc: Speedometer, Odometer, Voltmeter, Oil Pressure, Engine Coolant Temp, Tachometer, Inclinator, Altimeter, Oil Temperature, Engine Hour Meter, Trip Odometer and Trip Computer
- Power 1st Row Windows w/Driver And Passenger 1-Touch Down
- Power Door Locks w/Autolock Feature
- Power Rear Windows and Removable 3rd Row Windows
- Premium Cloth Low-Back Bucket Seats- Proximity Key For Doors And Push Button Start
- Remote Keyless Entry w/Integrated Key Transmitter, Illuminated Entry and Panic Button
- Trip Computer- 2 12V DC Power Outlets
- 2 12V DC Power Outlets and 1 120V AC Power Outlet - 2 Seatback Storage Pockets
- 4-Way Passenger Seat -inc: Manual Recline and Fore/Aft Movement
- 4G LTE Wi-Fi Hot Spot Mobile Hotspot Internet Access
- 60-40 Folding Split-Bench Front Facing Fold Forward Seatback Premium Cloth Rear Seat
- Air Filtration- Analog Appearance- Cargo Space Lights
- Carpet Floor Trim, Carpet And Rubber Mat- Compass
- Cruise Control w/Steering Wheel Controls- Day-Night Auto-Dimming Rearview Mirror
- Delayed Accessory Power
- Driver And Passenger Visor Vanity Mirrors w/Driver And Passenger Illumination
- Fade-To-Off Interior Lighting- Front And Rear Map Lights
- Front Center Armrest w/Storage
- Full Floor Console w/Locking Storage, 2 12V DC Power Outlets and 1 120V AC Power Outlet
- Garage Door Transmitter- HVAC -inc: Console Ducts- Illuminated Front Cupholder
- Illuminated Rear Cupholder
- Instrument Panel Bin, Dashboard Storage, Driver / Passenger And Rear Door Bins
- Interior Trim -inc: Colored Instrument Panel Insert, Metal-Look Door Panel Insert, Metal-

## SAFETY GROUP

-inc: ParkSense Rear Park Assist System, Blind Spot & Cross Path Detection, LED Taillamps **\$1,395**

## SKY 1-TOUCH POWER TOP

-inc: Rear Window Defroster, Rear Window Wiper/Washer, Removable Rear Quarter Windows, Power Top Quarter Window Storage Bag **\$4,295**

## QUICK ORDER PACKAGE 25R RUBICON

-inc: Engine: 3.6L V6 24V VVT eTorque UPG I, Transmission: 8-Speed Automatic (850RE)

## HYDRO BLUE PEARLCOAT

**\$495**

## Option Packages Total

**\$11,830**

- Interior Trim Inc. Colored Instrument Panel Insert, Metal-Look Door Panel Insert, Metal-Look Console Insert and Metal-Look Interior Accents
- Leatherette Steering Wheel- Locking Cargo Area Concealed Storage- Locking Glove Box
- Manual Adjustable Front Head Restraints and Foldable Rear Head Restraints
- Manual Tilt/Telescoping Steering Column- Outside Temp Gauge- Perimeter Alarm
- Redundant Digital Speedometer- Sentry Key Immobilizer- Smart Device Integration
- Systems Monitor- Tracker System- Urethane Gear Shifter Material
- Voice Activated Dual Zone Front Automatic Air Conditioning

---

## Mechanical

- 4-Wheel Disc Brakes w/4-Wheel ABS, Front Vented Discs, Brake Assist and Hill Hold Control
- Brake Actuated Limited Slip Differential- Driver Selectable Rear Locking Differential
- Engine: 3.6L V6 24V VVT UPG I w/ESS - Part-Time Four-Wheel Drive
- Transmission: 6-Speed Manual- 1351# Maximum Payload- 21.5 Gal. Fuel Tank
- 220 Amp Alternator- 4.10 Rear Axle Ratio- 5 Skid Plates- 50 State Emissions
- 650CCA Maintenance-Free Battery w/Run Down Protection- Auto Locking Hubs
- Aux Battery- Electro-Hydraulic Power Assist Steering- Engine Oil Cooler
- Front Active w/Driver Control Anti-Roll Bar and Rear Anti-Roll Bar- GVWR: 5,800 lbs
- HD Shock Absorbers- Leading Link Front Suspension w/Coil Springs
- Manual Transfer Case- Performance Suspension- Single Stainless Steel Exhaust
- Solid Axle Rear Suspension w/Coil Springs- Stop-Start Dual Battery System
- Towing Equipment -inc: Trailer Sway Control

---

Texas Vehicle Exchange

[tveauto.com](http://tveauto.com)

972-242-5350

1724 Luna Road

Carrollton, TX 75006

© 2024 AutoRevo - All rights reserved. - Powered by AutoRevo