

## 2003 Toyota Camry LE

View this car on our website at [fast.autorevo-websites.com/7173345/ebrochure](http://fast.autorevo-websites.com/7173345/ebrochure)

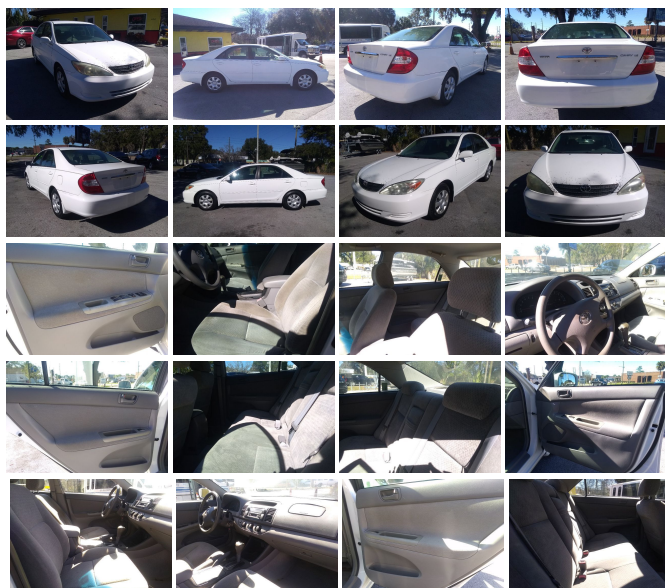


Our Price **\$5,995**

### Specifications:

<b>Year:</b>	2003
<b>VIN:</b>	4T1BE32K63U250832
<b>Make:</b>	Toyota
<b>Stock:</b>	A1873
<b>Model/Trim:</b>	Camry LE
<b>Condition:</b>	Pre-Owned
<b>Body:</b>	Sedan
<b>Exterior:</b>	Super White
<b>Engine:</b>	2.4L DOHC VVTi 16-valve 4-cyl engine
<b>Interior:</b>	Taupe Cloth
<b>Mileage:</b>	164,437
<b>Drivetrain:</b>	Front Wheel Drive
<b>Economy:</b>	City 23 / Highway 32

Nice 2003 Camry up for sale. New rubber all the way around. New brakes front and rear. Cold ac hot heat. Stop by today and check this vehicle out. Will not last long.



2003 Toyota Camry LE

AutoRevo PowerSites - Demo1 - 1.888.311.REVO - View this car on our website at [fast.autorevo-websites.com/7173345/ebrochure](http://fast.autorevo-websites.com/7173345/ebrochure)

## Our Location :



2003 Toyota Camry LE

AutoRevo PowerSites - Demo1 - 1.888.311.REVO - View this car on our website at [fast.autorevo-websites.com/7173345/ebrochure](https://fast.autorevo-websites.com/7173345/ebrochure)

## Installed Options

### Interior

- Pwr driver seat- Cloth seat trim- Automatic pwr door locks w/anti-lockout feature
- Remote keyless entry system w/panic feature/trunk release/illuminated entry
- Deluxe 3-in-1 AM/FM ETR stereo w/cassette/CD-inc: (6) speakers
- Overhead console w/maplights & sunglasses holder
- Multi-adjustable front bucket seats w/adjustable headrests
- Driver seat cushion vertical height adjuster & lumbar support
- Bi-level covered center console w/storage
- 60/40 split fold-down rear seat w/adjustable outboard headrests, security locks, seat belt positioning clips
- Fold-down center armrest w/dual cup holders- Cut-pile carpeting w/driver-side footrest
- Tilt steering wheel
- Instrumentation-inc: speedometer, tachometer, digital odometer, dual tripmeters, temp/fuel gauges
- Warning lights-inc: airbag, seat belts, low-fuel level, door-ajar, battery, check engine, oil pressure, brake & taillamp bulb failure
- Pwr windows w/driver side auto-down, retained pwr- Cruise control
- Remote releases-inc: trunk, hood, fuel-filler door
- Defroster-linked electronic air conditioning w/air filtration
- HD electric rear window defogger w/timer- In-glass antenna
- Lockable illuminated glove box- Digital clock w/exterior temp display
- Cloth door trim w/integrated armrest, dual front/rear map pockets
- (2) 12-volt auxiliary pwr outlets- Illuminated entry- (3) front cup holders
- Trunk luggage box

### Exterior

- Daytime running lamps- Color-keyed protective body-side moldings
- Color-keyed door handles
- Aerodynamic multi-reflector halogen headlamps w/automatic off feature
- Dual color-keyed door handles- High Color Energy Absorbing (HCEA) glass

- Dual color-keyed pwr mirrors- High Solar-Energy Absorbing (HSEA) glass
- Washer-linked variable intermittent front windshield wipers

---

## Safety

- Pwr driver seat- Cloth seat trim- Automatic pwr door locks w/anti-lockout feature
- Remote keyless entry system w/panic feature/trunk release/illuminated entry
- Deluxe 3-in-1 AM/FM ETR stereo w/cassette/CD-inc: (6) speakers
- Overhead console w/maplights & sunglasses holder
- Multi-adjustable front bucket seats w/adjustable headrests
- Driver seat cushion vertical height adjuster & lumbar support
- Bi-level covered center console w/storage
- 60/40 split fold-down rear seat w/adjustable outboard headrests, security locks, seat belt positioning clips
- Fold-down center armrest w/dual cup holders- Cut-pile carpeting w/driver-side footrest
- Tilt steering wheel
- Instrumentation-inc: speedometer, tachometer, digital odometer, dual tripmeters, temp/fuel gauges
- Warning lights-inc: airbag, seat belts, low-fuel level, door-ajar, battery, check engine, oil pressure, brake & taillamp bulb failure
- Pwr windows w/driver side auto-down, retained pwr- Cruise control
- Remote releases-inc: trunk, hood, fuel-filler door
- Defroster-linked electronic air conditioning w/air filtration
- HD electric rear window defogger w/timer- In-glass antenna
- Lockable illuminated glove box- Digital clock w/exterior temp display
- Cloth door trim w/integrated armrest, dual front/rear map pockets
- (2) 12-volt auxiliary pwr outlets- Illuminated entry- (3) front cup holders
- Trunk luggage box

---

## Mechanical

- 4-speed automatic transmission w/OD & intelligence (ECTi)
- 2.4L DOHC VVTi 16-valve 4-cyl engine- Front wheel drive- Battery saver feature
- Electronic distributorless direct ignition system- MacPherson strut front suspension
- Independent dual-link MacPherson strut rear suspension
- Front & rear stabilizer bars, gas-filled shock absorbers, vibration-dampening sub-frames
- P205/65R15 all-season SBR BSW tires- Full size spare tire
- 15" steel wheels w/full covers- Variable assist pwr rack & pinion steering
- Pwr front ventilated disc/rear drum brakes- 18.5 gallon fuel tank

---

AutoRevo PowerSites - Demo1

[fast.autorevo-websites.com](http://fast.autorevo-websites.com)

1.888.311.REVO

1200 Commerce Drive

Plano, TX 75093

© 2024 AutoRevo - All rights reserved. - [Powered by AutoRevo](#)