



## 2005 Dodge Ram 2500 SLT Cummins Diesel

**Our Price \$11,995**

View this vehicle on our website at [advancedautogroupllc.com](http://advancedautogroupllc.com)

Advanced Auto Group, LLC

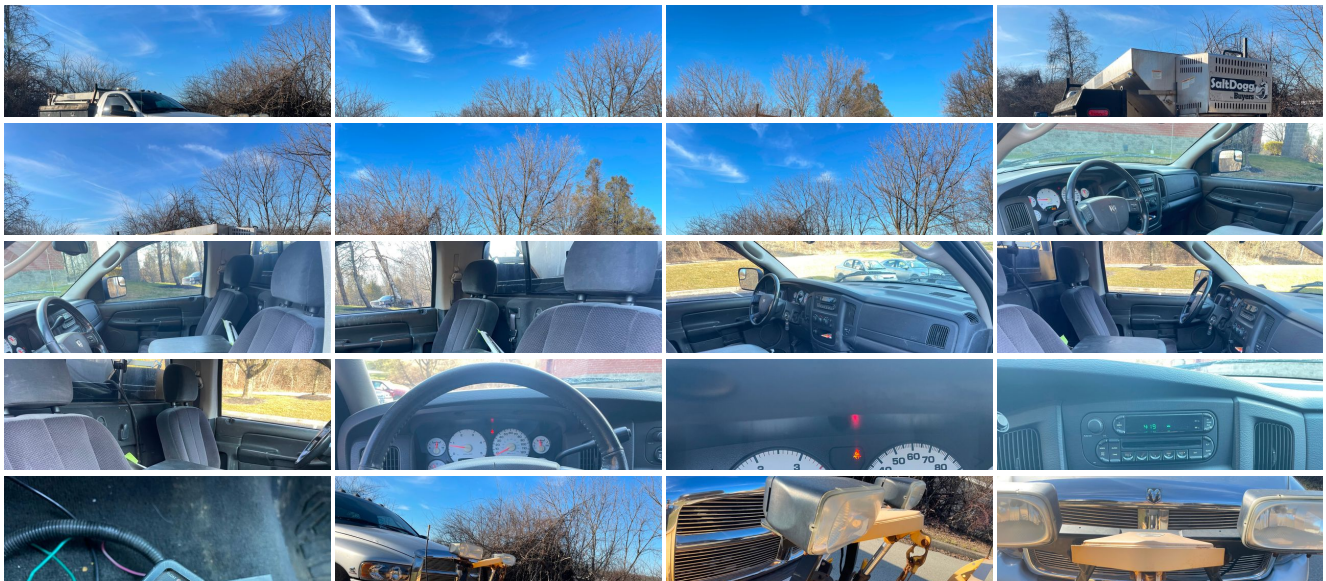
[610.295.9539](tel:610.295.9539)

1313 Wilmington Pike , West Chester, PA 19382

Photos

Details

Contact



## Specifications:

Year:	2005
VIN:	3D7KS26C95G741028
Make:	Dodge
Model/Trim:	Ram 2500 SLT Cummins Diesel
Condition:	Pre-Owned
Body:	Pickup Truck
Exterior:	Bright Silver Metallic
Engine:	5.9L (360) HO I6 CUMMINS TURBO DIESEL ENGINE
Interior:	Gray
Mileage:	110,979
Drivetrain:	4 Wheel Drive

## Vehicle Description

2005 Dodge Ram 2500 Cummins 5.9L Turbo Diesel plow truck in good shape and ready for work. This truck is currently in service with a local company that is upgrading their fleet. This truck has been a great work horse and served its owner very well. It's now time for someone else to continue to use this truck and would be a great addition to your fleet! Fitted with a Fisher Plow and SlatDogg spreader this truck is ready to work!

Overall this 2500 Cummins runs and drives excellent! It has tons of power and the transmission shifts smoothly. The plow works great along with the salt spreader. Being a plow truck from PA this truck does come with its share of rust both cosmetic and surface. The body shows signs of rust as shown in the photos. The underneath also has rust consistent with its age, miles, and use. The frame is solid and the truck overall is very solid with plenty of life ahead of it. Truck currently has 110,000 miles and will go up slightly as it is still in service until sold.

We have provided 50 detailed photos for your review. We

welcome your inspection prior to purchase. Should you need assistance with shipping logistics please contact us to help.

For more details and with questions call Adam

( 6 1 0 ) 2 9 5 – 9 5 3 9

www. Advanced Auto Group LLC .com

## Installed Options

### Interior

- AM/FM stereo w/CD player-inc: CD changer control, (4) speakers - Air conditioning
- Cloth 40/20/40 split bench seat- Front floor mats- Overhead console w/trip computer
- Passenger side visor vanity mirror- Pwr locks- Remote keyless entry- 12V pwr outlet
- 4-spoke steering wheel- Cab back storage- Day/night rearview mirror
- Floor tunnel insulation- Front seat area floor carpeting- Glovebox lamp
- Instrument cluster-inc: 120 MPH primary speedometer, tachometer
- Passenger assist handle- Pwr windows w/driver one-touch down- Speed control
- Tilt steering column

### Exterior

- Fold away heated pwr exterior mirrors- Body-color upper front fascia
- Bright front bumper- Bright grille- Bright rear bumper- Cargo lamp- Front air dam
- Tinted glass- Trailer tow wiring-inc: 4-pin connector
- Variable speed intermittent windshield wipers

### Safety

- AM/FM stereo w/CD player-inc: CD changer control, (4) speakers - Air conditioning
- Cloth 40/20/40 split bench seat- Front floor mats- Overhead console w/trip computer
- Passenger side visor vanity mirror- Pwr locks- Remote keyless entry- 12V pwr outlet
- 4-spoke steering wheel- Cab back storage- Day/night rearview mirror
- Floor tunnel insulation- Front seat area floor carpeting- Glovebox lamp
- Instrument cluster-inc: 120 MPH primary speedometer, tachometer
- Passenger assist handle- Pwr windows w/driver one-touch down- Speed control
- Tilt steering column

### Mechanical

- 17" x 8" chromed steel wheels
- 5.7L (350) SMPI V8 HEMI "Magnum" engine-inc: electronically controlled throttle
- 6-speed manual transmission w/OD- Four wheel drive
- Full size spare tire w/17" steel wheel, winch type carrier
- LT265/70R17E all-season BSW tires- Manual shift-on-the-fly transfer case
- Pwr 4-wheel anti-lock disc brakes- 10.5" rear axle ring gear diameter
- 136-amp alternator- 3.73 axle ratio- 35 gallon fuel tank- 600-amp battery
- 8.0' pickup box- 8650# GVWR- 9.25" front axle ring gear diameter - Front stabilizer bar
- HD engine cooling- HD front/rear shock absorbers- Pwr steering

## Option Packages

### Factory Installed Packages

5.9L (360) HO I6 CUMMINS TURBO DIESEL ENGINE	
-inc: 750-amp maintenance-free battery, 9000# GVWR	\$5,555

Option Packages Total	\$5,555
-----------------------	---------

View this car on our website at [advancedautogroupllc.com/7172478](https://advancedautogroupllc.com/7172478)

Website: [advancedautogroupllc.com](https://advancedautogroupllc.com)

Phone: 610.295.9539

Map: 1313 Wilmington Pike, West Chester, PA 19382

