



2016 Ford Sedan Police Interceptor AWD

Our Price \$9,995

Estimated Payment* : **\$299**

*Estimate based on 60 months term at 7.0% APR.

*This estimation is for informational use only and is based on the information you provide. Actual loan amounts and payments will vary based on additional items such as taxes and fees as well as the actual interest rate available to you from a financial institution.

View this vehicle on our website at reflectionautosales.com



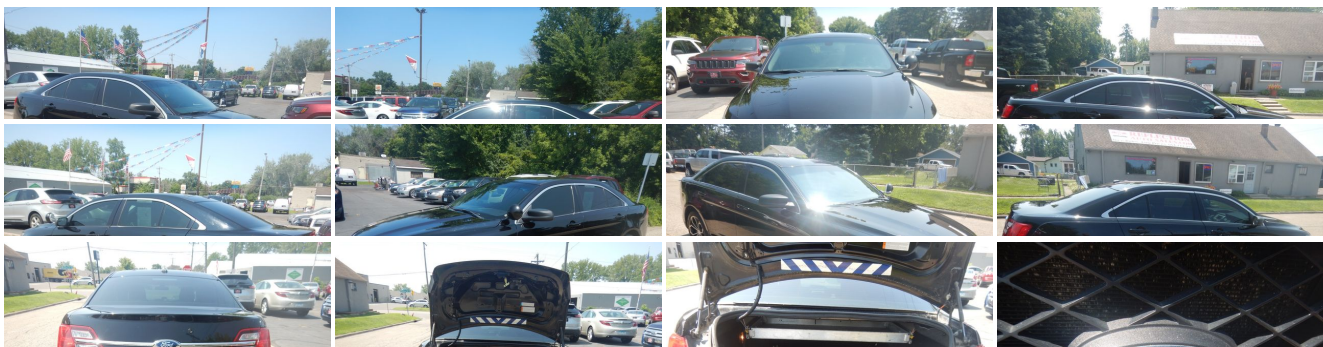
651-777-0100

4747 Geneva Ave N , Oakdale, Minnesota 55128

Photos

Details

Contact





Specifications:

Year:	2016
VIN:	1FAHP2MK4GG106612
Make:	Ford
Stock:	2740
Model/Trim:	Sedan Police Interceptor AWD
Condition:	Pre-Owned
Body:	Sedan
Exterior:	Shadow Black
Engine:	ENGINE: 3.7L TI-VCT V6
Interior:	Charcoal Black Cloth
Transmission:	TRANSMISSION: 6-SPEED AUTOMATIC
Mileage:	113,801
Drivetrain:	All Wheel Drive
Economy:	City 18 / Highway 25

Vehicle Description

Ladies and gentlemen, buckle up and get ready to experience the ultimate in law enforcement transportation: the 2016 Ford Sedan Police Interceptor. This sleek and powerful vehicle is the perfect choice for any police department looking to upgrade their fleet.

Let's start with the exterior. The black paint job is both intimidating and stylish, making a bold statement on the road. It's not just for show either, as this car is built to withstand the toughest of conditions. The reinforced body and steel wheels are designed to handle high-speed chases and rough terrain, making it the perfect vehicle for any police pursuit.

But it's not just the exterior that impresses. The interior of the Ford Sedan Police Interceptor is equally impressive. The black cloth seats are comfortable and durable, perfect for long hours on patrol. The spacious cabin provides ample room for officers and equipment, so you won't have to worry about feeling cramped.

Now, let's talk about the engine. The 3.7L TI-VCT V6 engine is a true powerhouse, providing the kind of speed and acceleration that police officers need in high-pressure situations. This engine is designed to deliver maximum power while maintaining fuel efficiency, so you won't have to worry about constantly refueling during long shifts.

But it's not just about speed and power. The Ford Sedan Police Interceptor is also packed with features designed to keep officers safe and in control. The advanced suspension system provides a smooth ride, even at high speeds, while the advanced braking system ensures that you can stop on a dime when necessary.

In addition, the car is equipped with a state-of-the-art communication system, allowing officers to stay in touch with each other and with headquarters at all times. The advanced security system ensures that the car is always secure, even when parked in high-crime areas.

Overall, the 2016 Ford Sedan Police Interceptor is the ultimate choice for any police department looking to upgrade their fleet. With its sleek and stylish exterior, spacious and comfortable interior, and powerful engine, this car is designed to handle any situation with ease. So why wait? Upgrade your fleet today and experience the ultimate in law enforcement transportation.

Contact us now for more details. You can own this ride for \$299 per month! Vehicle qualifies for Autocheck buy back guarantee! Clean Title, Fully inspected and detailed! Low, low interest rates! Limited Warranty Available! All Credit situations WELCOME. 100% FINANCING APPROVAL - IS OUR GOAL!!! - APPLY NOW At www.reflectionautosales.com

Installed Options	Option Packages
Interior <ul style="list-style-type: none"> - Power 1st Row Windows w/Driver 1-Touch Up/Down - Power 2nd Row Windows w/Driver 1-Touch Up/Down - Power 3rd Row Windows w/Driver 1-Touch Up/Down - Power 4th Row Windows w/Driver 1-Touch Up/Down - Power 5th Row Windows w/Driver 1-Touch Up/Down - Power 6th Row Windows w/Driver 1-Touch Up/Down - Power 7th Row Windows w/Driver 1-Touch Up/Down - Power 8th Row Windows w/Driver 1-Touch Up/Down - Power 9th Row Windows w/Driver 1-Touch Up/Down - Power 10th Row Windows w/Driver 1-Touch Up/Down - Power 11th Row Windows w/Driver 1-Touch Up/Down - Power 12th Row Windows w/Driver 1-Touch Up/Down - Power 13th Row Windows w/Driver 1-Touch Up/Down - Power 14th Row Windows w/Driver 1-Touch Up/Down - Power 15th Row Windows w/Driver 1-Touch Up/Down - Power 16th Row Windows w/Driver 1-Touch Up/Down - Power 17th Row Windows w/Driver 1-Touch Up/Down - Power 18th Row Windows w/Driver 1-Touch Up/Down - Power 19th Row Windows w/Driver 1-Touch Up/Down - Power 20th Row Windows w/Driver 1-Touch Up/Down - Power 21st Row Windows w/Driver 1-Touch Up/Down - Power 22nd Row Windows w/Driver 1-Touch Up/Down - Power 23rd Row Windows w/Driver 1-Touch Up/Down - Power 24th Row Windows w/Driver 1-Touch Up/Down - Power 25th Row Windows w/Driver 1-Touch Up/Down - Power 26th Row Windows w/Driver 1-Touch Up/Down - Power 27th Row Windows w/Driver 1-Touch Up/Down - Power 28th Row Windows w/Driver 1-Touch Up/Down - Power 29th Row Windows w/Driver 1-Touch Up/Down - Power 30th Row Windows w/Driver 1-Touch Up/Down - Power 31st Row Windows w/Driver 1-Touch Up/Down - Power 32nd Row Windows w/Driver 1-Touch Up/Down - Power 33rd Row Windows w/Driver 1-Touch Up/Down - Power 34th Row Windows w/Driver 1-Touch Up/Down - Power 35th Row Windows w/Driver 1-Touch Up/Down - Power 36th Row Windows w/Driver 1-Touch Up/Down - Power 37th Row Windows w/Driver 1-Touch Up/Down - Power 38th Row Windows w/Driver 1-Touch Up/Down - Power 39th Row Windows w/Driver 1-Touch Up/Down - Power 40th Row Windows w/Driver 1-Touch Up/Down - Power 41st Row Windows w/Driver 1-Touch Up/Down - Power 42nd Row Windows w/Driver 1-Touch Up/Down - Power 43rd Row Windows w/Driver 1-Touch Up/Down - Power 44th Row Windows w/Driver 1-Touch Up/Down - Power 45th Row Windows w/Driver 1-Touch Up/Down - Power 46th Row Windows w/Driver 1-Touch Up/Down - Power 47th Row Windows w/Driver 1-Touch Up/Down - Power 48th Row Windows w/Driver 1-Touch Up/Down - Power 49th Row Windows w/Driver 1-Touch Up/Down - Power 50th Row Windows w/Driver 1-Touch Up/Down - Power 51st Row Windows w/Driver 1-Touch Up/Down - Power 52nd Row Windows w/Driver 1-Touch Up/Down - Power 53rd Row Windows w/Driver 1-Touch Up/Down - Power 54th Row Windows w/Driver 1-Touch Up/Down - Power 55th Row Windows w/Driver 1-Touch Up/Down - Power 56th Row Windows w/Driver 1-Touch Up/Down - Power 57th Row Windows w/Driver 1-Touch Up/Down - Power 58th Row Windows w/Driver 1-Touch Up/Down - Power 59th Row Windows w/Driver 1-Touch Up/Down - Power 60th Row Windows w/Driver 1-Touch Up/Down - Power 61st Row Windows w/Driver 1-Touch Up/Down - Power 62nd Row Windows w/Driver 1-Touch Up/Down - Power 63rd Row Windows w/Driver 1-Touch Up/Down - Power 64th Row Windows w/Driver 1-Touch Up/Down - Power 65th Row Windows w/Driver 1-Touch Up/Down - Power 66th Row Windows w/Driver 1-Touch Up/Down - Power 67th Row Windows w/Driver 1-Touch Up/Down - Power 68th Row Windows w/Driver 1-Touch Up/Down - Power 69th Row Windows w/Driver 1-Touch Up/Down - Power 70th Row Windows w/Driver 1-Touch Up/Down - Power 71st Row Windows w/Driver 1-Touch Up/Down - Power 72nd Row Windows w/Driver 1-Touch Up/Down - Power 73rd Row Windows w/Driver 1-Touch Up/Down - Power 74th Row Windows w/Driver 1-Touch Up/Down - Power 75th Row Windows w/Driver 1-Touch Up/Down - Power 76th Row Windows w/Driver 1-Touch Up/Down - Power 77th Row Windows w/Driver 1-Touch Up/Down - Power 78th Row Windows w/Driver 1-Touch Up/Down - Power 79th Row Windows w/Driver 1-Touch Up/Down - Power 80th Row Windows w/Driver 1-Touch Up/Down - Power 81st Row Windows w/Driver 1-Touch Up/Down - Power 82nd Row Windows w/Driver 1-Touch Up/Down - Power 83rd Row Windows w/Driver 1-Touch Up/Down - Power 84th Row Windows w/Driver 1-Touch Up/Down - Power 85th Row Windows w/Driver 1-Touch Up/Down - Power 86th Row Windows w/Driver 1-Touch Up/Down - Power 87th Row Windows w/Driver 1-Touch Up/Down - Power 88th Row Windows w/Driver 1-Touch Up/Down - Power 89th Row Windows w/Driver 1-Touch Up/Down - Power 90th Row Windows w/Driver 1-Touch Up/Down - Power 91st Row Windows w/Driver 1-Touch Up/Down - Power 92nd Row Windows w/Driver 1-Touch Up/Down - Power 93rd Row Windows w/Driver 1-Touch Up/Down - Power 94th Row Windows w/Driver 1-Touch Up/Down - Power 95th Row Windows w/Driver 1-Touch Up/Down - Power 96th Row Windows w/Driver 1-Touch Up/Down - Power 97th Row Windows w/Driver 1-Touch Up/Down - Power 98th Row Windows w/Driver 1-Touch Up/Down - Power 99th Row Windows w/Driver 1-Touch Up/Down - Power 100th Row Windows w/Driver 1-Touch Up/Down 	Factory Installed Packages

- Power Door Locks w/Autolock Feature- Power Rear Windows- Trip Computer
- 2 12V DC Power Outlets
- 60-40 Folding Bench Front Facing Fold Forward Seatback Rear Seat - Air Filtration
- Analog Appearance- Cargo Space Lights
- Carpet Floor Trim and Carpet Trunk Lid/Rear Cargo Door Trim
- Cruise Control w/Steering Wheel Controls- Day-Night Rearview Mirror
- Delayed Accessory Power- Driver And Passenger Door Bins
- Driver And Passenger Visor Vanity Mirrors- Driver Foot Rest- Driver Seat
- Fade-To-Off Interior Lighting- Front Map Lights- Full Cloth Headliner
- Full Vinyl/Rubber Floor Covering
- Gauges -inc: Speedometer, Odometer, Engine Coolant Temp, Tachometer, Engine Hour Meter, Trip Odometer and Trip Computer
- HVAC -inc: Underseat Ducts
- Heavy-Duty Cloth Front Bucket Seats/Vinyl Rear -inc: 6-way power driver w/manual recline and lumbar, passenger 2-way manual w/recline and built-in steel intrusion plates in both front seatbacks
- Interior Trim -inc: Chrome Interior Accents - Locking Glove Box
- Manual Adjustable Front Head Restraints- Manual Air Conditioning
- Manual Tilt/Telescoping Steering Column
- Mini Overhead Console w/Storage and 2 12V DC Power Outlets- Passenger Seat
- Power Adjustable Pedals- Redundant Digital Speedometer
- Remote Releases -Inc: Power Cargo Access- Seats w/Vinyl Back Material
- Systems Monitor- Urethane Gear Shifter Material

Exterior

- Wheels: 18" x 8" Steel w/Hub Cover -inc: 5-spoke painted black, hub cover and full-size spare wheel
- Black Door Handles- Black Grille
- Black Power Side Mirrors w/Convex Spotter and Manual Folding
- Black Side Windows Trim and Black Front Windshield Trim
- Body-Colored Front Bumper
- Body-Colored Rear Bumper w/Black Rub Strip/Fascia Accent- Clearcoat Paint
- Fixed Rear Window w/Defroster- Front Windshield -inc: Sun Visor Strip
- Fully Galvanized Steel Panels- Laminated Glass- Light Tinted Glass
- Projector Beam Halogen Headlamps- Spare Tire Mounted Inside Under Cargo
- Steel Spare Wheel- Tires: P245/55R18 AS BSW -inc: full size spare tire w/TPMS
- Trunk Rear Cargo Access- Variable Intermittent Wipers

Safety

- Power 1st Row Windows w/Driver 1-Touch Up/Down
- Power Door Locks w/Autolock Feature- Power Rear Windows- Trip Computer
- 2 12V DC Power Outlets
- 60-40 Folding Bench Front Facing Fold Forward Seatback Rear Seat - Air Filtration
- Analog Appearance- Cargo Space Lights
- Carpet Floor Trim and Carpet Trunk Lid/Rear Cargo Door Trim
- Cruise Control w/Steering Wheel Controls- Day-Night Rearview Mirror
- Delayed Accessory Power- Driver And Passenger Door Bins
- Driver And Passenger Visor Vanity Mirrors- Driver Foot Rest- Driver Seat
- Fade-To-Off Interior Lighting- Front Map Lights- Full Cloth Headliner
- Full Vinyl/Rubber Floor Covering
- Gauges -inc: Speedometer, Odometer, Engine Coolant Temp, Tachometer, Engine Hour Meter, Trip Odometer and Trip Computer
- HVAC -inc: Underseat Ducts
- Heavy-Duty Cloth Front Bucket Seats/Vinyl Rear -inc: 6-way power driver w/manual recline and lumbar, passenger 2-way manual w/recline and built-in steel intrusion plates in both front seatbacks
- Interior Trim -inc: Chrome Interior Accents - Locking Glove Box
- Manual Adjustable Front Head Restraints- Manual Air Conditioning
- Manual Tilt/Telescoping Steering Column
- Mini Overhead Console w/Storage and 2 12V DC Power Outlets- Passenger Seat
- Power Adjustable Pedals- Redundant Digital Speedometer
- Remote Releases -Inc: Power Cargo Access- Seats w/Vinyl Back Material
- Systems Monitor- Urethane Gear Shifter Material

Mechanical

- 1 Skid Plate- 19 Gal. Fuel Tank- 3.39 Axle Ratio
- 4-Wheel Disc Brakes w/4-Wheel ABS, Front Vented Discs and Brake Assist
- 78-Amp/Hr 750CCA Maintenance-Free Battery- Automatic Full-Time All-Wheel
- Dual Stainless Steel Exhaust- Electric Power-Assist Steering- Engine Oil Cooler
- Engine: 3.7L Ti-VCT V6 (FFV) Flex fuel is not available in states with California emissions standards: CA, CT, DE, MA, MD, ME, NJ, NY, OR, PA, RI, VT and WA.
- Front And Rear Anti-Ball Bars- Gas Pressurized Shock Absorbers

ENGINE: 3.7L TI-VCT V6

TRANSMISSION: 6-SPEED AUTOMATIC

- inc: Exclusively police calibrated for maximum acceleration and faster closing speed

DARK CAR FEATURE

- inc: Courtesy lamps disabled when any door is opened (trunk not included) **\$20**

ELECTRONICS TRAY W/O FAN

- inc: (4 sq ft) w/18" of travel when fully extended locks, Payload capacity 100 lbs **\$285**

KEYED ALIKE - 0135X

\$50

NOISE SUPPRESSION BONDS

\$95

REAR CONSOLE MOUNTING PLATE

- inc: Contours through 2nd row, channel for wiring **\$35**

REAR POWER WINDOW DELETE

- inc: Operable from front driver side switches **\$25**

REVERSE SENSING

\$295

SYNC BASIC VOICE-ACTIVATED COMMUNICATIONS SYSTEM

- inc: 911 Assist, VHR, SYNC Services, AppLink, Bluetooth, steering wheel controls, USB port and auxiliary input jack **\$295**

TRUNK CIRCULATION FAN

- inc: Mounted inside trunk, Maintains airflow from cabin to trunk, Does not include wire harness **\$100**

TRUNK STORAGE VAULT W/LOCKABLE DOOR

\$120

SHADOW BLACK

CHARCOAL BLACK, HEAVY-DUTY CLOTH FRONT BUCKET SEATS/VINYL REAR

- inc: 6-way power driver w/manual recline and lumbar, passenger 2-way manual w/recline and built-in steel intrusion plates in both front seatbacks

Option Packages Total

\$1,320

- Front And Rear Air-Pull Bars- Gas-Pressurized Shock Absorbers
- HD 220 Amp Alternator- Multi-Link Rear Suspension w/Coil Springs- Police/Fire
- Strut Front Suspension w/Coil Springs- Transmission w/Oil Cooler
- Transmission: 6-Speed Automatic -inc: Exclusively police calibrated for maximum acceleration and faster closing speed

Price displayed is after all discount and promotions. Trade in promotions may not be combined with any other promotion or coupon. Contact Sales Department for details!

100% FINANCING APPROVAL - IS OUR GOAL!!! - APPLY NOW AT www.reflectionautosales.com/

Reflection Auto Sales

Reflection Auto Sales

View this car on our website at [reflectionautosales.com/7168928](http://www.reflectionautosales.com/7168928)

Website: [reflectionautosales.com](http://www.reflectionautosales.com)

Phone: 651-777-0100

Map: [4747 Geneva Ave N, Oakdale, Minnesota 55128](#)

