

2015 Chevrolet Silverado 2500HD LT

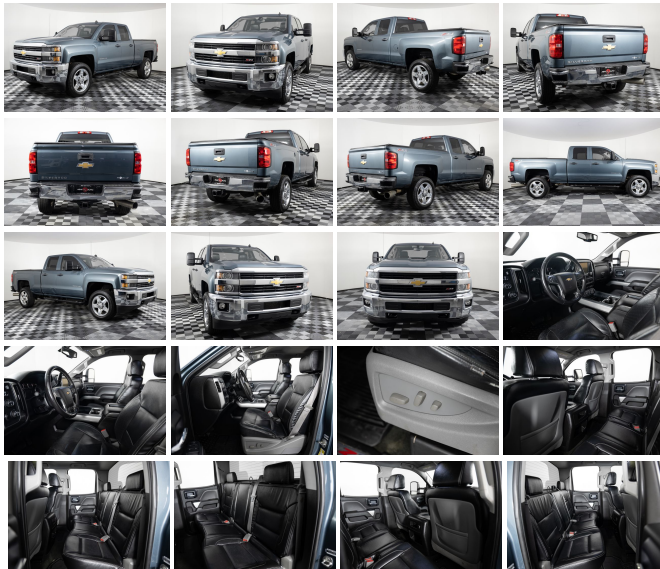
View this car on our website at asayauto.com/7168765/ebrochure



Our Price **\$31,495**

Specifications:

Year:	2015
VIN:	1GC2KVE85FZ133534
Make:	Chevrolet
Stock:	P6694A_1
Model/Trim:	Silverado 2500HD LT
Condition:	Pre-Owned
Body:	Pickup Truck
Exterior:	Blue Granite Metallic
Engine:	ENGINE, DURAMAX 6.6L TURBO DIESEL V8, B20-DIESEL COMPATIBLE
Interior:	Jet Black
Mileage:	137,475
Drivetrain:	4 Wheel Drive

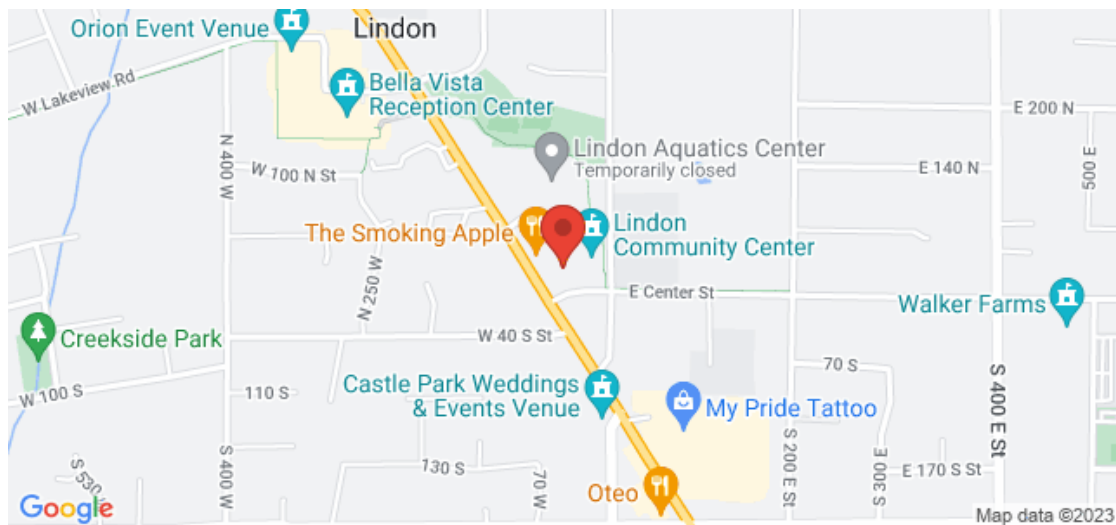


*CLEAN TITLE *CLEAN CARFAX REPORT SHOWING 1 ORIGINAL OWNER, AND REGULAR SERVICE RECORDS! *FRESH LOCAL TRADE-IN, RARE 4WD DURAMAX! THESE TRUCKS PULL AMAZING, AND LAST FOREVER! **We will price match any equally equipped vehicle within 300 miles of our dealership** ***Credit Union and bank financing available** *** We take trades and can arrange buyer financing ** * Call or text us 24 hours at 385-323-8407 with any questions!

2015 Chevrolet Silverado 2500HD LT

Asay Auto Sales - 801-443-7779 - View this car on our website at asayauto.com/7168765/ebrochure

Our Location :



2015 Chevrolet Silverado 2500HD LT

Asay Auto Sales - 801-443-7779 - View this car on our website at asayauto.com/7168765/ebrochure

Installed Options

Interior

- Seats, front 40/20/40 split-bench, 3-passenger. Available in cloth or leather. Includes driver and front passenger recline with outboard head restraints and center fold-down armrest with storage. Also includes manually adjustable driver lumbar, lockable storage compartment in seat cushion, and storage pockets. (Leather with (KA1) heat is an available extra charge option with (H1Y) Jet Black leather appointed interior trim and requires (PCM) LT Convenience Package. Upgradeable to (A95) front bucket cloth seats.)
- Seat trim, Cloth
- Seat, rear 60/40 folding bench (folds up), 3-passenger (includes child seat top tether anchor)
- Steering column, manual Tilt-Wheel
- Steering wheel, leather-wrapped with audio and cruise controls
- Steering wheel audio controls
- Floor covering, color-keyed carpeting with rubberized vinyl floor mats (Double Cab and Crew Cabs include second row floor mats)
- Instrumentation, 6-gauge cluster featuring speedometer, fuel level, engine temperature, tachometer, voltage and oil pressure
- Driver Information Center, 4.2-inch diagonal color display includes driver personalization, warning messages and vehicle information
- Windows, power with driver express up and down and express down on all other windows
- Door locks, power- Cruise control, steering wheel-mounted- Remote Keyless Entry
- Air conditioning, single-zone- Visors, driver and front passenger illuminated vanity mirrors
- Assist handle, front passenger and driver on A-pillars

Exterior

- Wheels, 17" (43.2 cm) machined aluminum includes 17" x 7.5" (43.2 cm x 19.1 cm) steel spare wheel. Spare not included with (ZW9) pickup box delete unless a spare tire is ordered
- Tires, LT245/75R17E all-season, blackwall
- Tire carrier lock keyed cylinder lock that utilizes same key as ignition and door (Not included when (ZW9) pickup box delete or (9J4) rear bumper delete is ordered.)
- Wheelhouse liners, rear (Deleted with (ZW9) pickup box delete.) - Bumper, front chrome

- CornerStep, rear bumper (Requires (E63) pickup box.)
- Bumper, rear chrome with bumper CornerSteps (Requires (E63) pickup box.)
- Grille surround, chrome- Headlamps, halogen projector
- Lamps, cargo area, cab mounted with switch on center switch bank
- Mirrors, outside heated power-adjustable (includes driver's side spotter mirror)
- Glass, deep-tinted- Door handles, Black- Tailgate and bed rail protection caps, top
- Tailgate, locking, utilizes same key as ignition and door (Deleted with (ZW9) pickup box delete.)
- Tailgate, EZ-Lift and Lower (Deleted with (ZW9) pickup box delete.)

Safety

- Seats, front 40/20/40 split-bench, 3-passenger. Available in cloth or leather. Includes driver and front passenger recline with outboard head restraints and center fold-down armrest with storage. Also includes manually adjustable driver lumbar, lockable storage compartment in seat cushion, and storage pockets. (Leather with (KA1) heat is an available extra charge option with (H1Y) Jet Black leather appointed interior trim and requires (PCM) LT Convenience Package. Upgradeable to (A95) front bucket cloth seats.)
- Seat trim, Cloth
- Seat, rear 60/40 folding bench (folds up), 3-passenger (includes child seat top tether anchor)
- Steering column, manual Tilt-Wheel
- Steering wheel, leather-wrapped with audio and cruise controls
- Steering wheel audio controls
- Floor covering, color-keyed carpeting with rubberized vinyl floor mats (Double Cab and Crew Cabs include second row floor mats)
- Instrumentation, 6-gauge cluster featuring speedometer, fuel level, engine temperature, tachometer, voltage and oil pressure
- Driver Information Center, 4.2-inch diagonal color display includes driver personalization, warning messages and vehicle information
- Windows, power with driver express up and down and express down on all other windows
- Door locks, power- Cruise control, steering wheel-mounted- Remote Keyless Entry
- Air conditioning, single-zone- Visors, driver and front passenger illuminated vanity mirrors
- Assist handle, front passenger and driver on A-pillars

Mechanical

- Engine, Vortec 6.0L Variable Valve Timing V8 SFI E85-compatible, FlexFuel capable of running on unleaded or up to 85% ethanol (360 hp [268.4 kW] @ 5400 rpm, 380 lb-ft of torque [515.0 N-m] @ 4200 rpm) with (E63) fleetside pickup box; (322 hp [240.1 kW] @ 4400 rpm, 380 lb-ft of torque [515.0 N-m] @ 4200 rpm) with (ZW9) pickup box delete (Does not include E85 capability with (ZW9) pickup box delete.)
- Transmission, 6-speed automatic, heavy-duty, electronically controlled with overdrive and tow/haul mode. Includes Cruise Grade Braking and Powertrain Grade Braking (Requires (L96) Vortec 6.0L V8 SFI engine or (LC8) 6.0L V8 SFI Gaseous engine.)
- Rear axle, 4.10 ratio (Requires (L96) Vortec 6.0L V8 SFI engine or (LC8) 6.0L V8 SFI Gaseous CNG (Compressed Natural Gas) engine.)
- Suspension Package, Standard includes 51mm twin tube shock absorbers and 33mm front stabilizer bar
- Pickup box, Wideside
- GVWR, 9500 lbs. (4309 kg) (Requires (L96) Vortec 6.0L V8 SFI engine or (LC8) 6.0L V8 SFI Gaseous engine.)
- Air cleaner, high-capacity
- Transfer case, electronic shift with rotary dial controls (Requires 4WD models.)
- Four wheel drive- Cooling, external engine oil cooler
- Cooling, auxiliary external transmission oil cooler
- Battery, heavy-duty 720 cold-cranking amps/80 Amp-hr, maintenance-free with rundown protection and retained accessory power
- Alternator, 150 amps- Frame, fully-boxed, hydroformed front section
- Recovery hooks, front, frame-mounted, black- Steering, Recirculating Ball
- Brakes, 4-wheel antilock, 4-wheel disc
- Exhaust, aluminized stainless-steel muffler and tailpipe

Option Packages

Factory Installed Packages

ENGINE, DURAMAX 6.6L TURBO DIESEL
 V8, B20-DIESEL COMPATIBLE
 (397 hp [296.0 kW] @ 3000 rpm, \$7,195
 765 lb-ft of torque [1032.8 N-
 m] @ 1600 rpm)

Option Packages Total
 \$7,195



Asay Auto Sales

asayauto.com

801-443-7779

10 North State Street

LINDON, UT 84042

© 2023 AutoRevo - All rights reserved. - Powered by AutoRevo