

# 2023 Jeep Gladiator Sport 4X4 DIESEL,DUPONT KEVLAR,LIFTED,BUMPERS,NAV

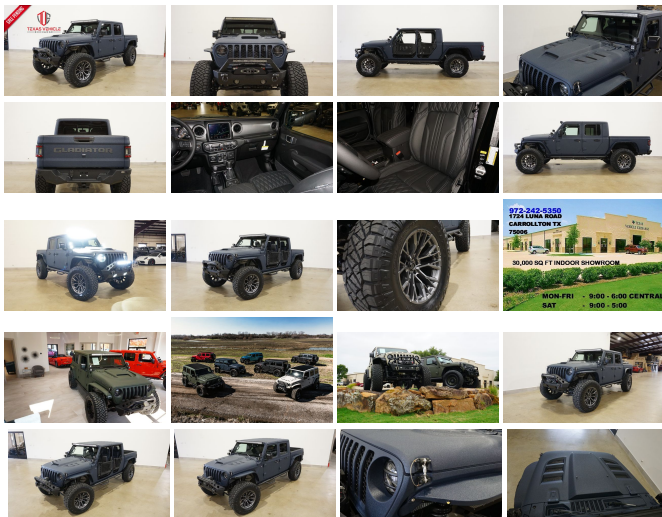
View this car on our website at [tveauto.com/7168724/ebrochure](https://tveauto.com/7168724/ebrochure)



Our Price **\$93,900**

## Specifications:

<b>Year:</b>	2023
<b>VIN:</b>	1C6JJTAM2PL506000
<b>Make:</b>	Jeep
<b>Stock:</b>	506000
<b>Model/Trim:</b>	Gladiator Sport 4X4 DIESEL,DUPONT KEVLAR,LIFTED,BUMPERS,NAV
<b>Condition:</b>	Pre-Owned
<b>Body:</b>	Pickup Truck
<b>Exterior:</b>	Blue
<b>Engine:</b>	ENGINE: 3.0L V6 TURBO DIESEL W/ESS G3
<b>Interior:</b>	Black Leather
<b>Transmission:</b>	TRANSMISSION: 8-SPEED AUTOMATIC (8HP75)
<b>Mileage:</b>	90
<b>Drivetrain:</b>	4 Wheel Drive
<b>Economy:</b>	City 16 / Highway 22



NATION WIDE FINANCING

SUBMIT CREDIT APP [WWW.TVEAUTO.COM](https://www.tveauto.com)

OR CALL 972-242-5350

**"FERRARI NART BLUE EDITION"**

CUSTOM BUILT **KEVLAR** 2023 JEEP  
GLADIATOR SPORT 4X4 WITH 26S  
PACKAGE

## UPGRADES INCLUDE:

- \* FERRARI NART BLUE KEVLAR COATING WITH ANTHRACITE ACCENTS
- \* 3.0L V6 TURBO DIESEL ENGINE WITH START STOP
- \* CUSTOM ALEA BLACK LEATHER WITH SILVER STITCHING
- \* HEATED FRONT SEATS
- \* FACTORY REMOTE START
- \* POPULAR EQUIPMENT PACKAGE
- \* ACTIVE SAFETY GROUP
- \* FACTORY 8.4 INCH TOUCH SCREEN NAVIGATION WITH HD AM/FM/SIRIUS STEREO & ALPINE PREMIUM AUDIO SYSTEM
- \* FACTORY BACK-UP CAMERA
- \* U-CONNECT
- \* 4 BODY ARMOR TRAIL DOORS & RECON MIRRORS
- \* DV8 OFF ROAD FS-25 STUBBY FRONT BUMPER WITH LED LIGHT BAR & LED FOGLIGHTS
- \* FRONT D-RINGS & ISOLATORS (ANTHRACITE)
- \* SMITTYBILT NEW GEN II "X20" 10,000 LB WATERPROOF AND WIRELESS CONTROL WINCH WITH SYNTHETIC ROPE
- \* FACTOR 55 PROLINK (BLACK)
- \* FACTORY LED HEADLIGHTS
- \* RUGGED RIDGE BLACK HEADLIGHT GUARDS
- \* NEW JT CUSTOM VENTED HOOD
- \* DRAKE OFF ROAD HOOD LATCHES
- \* DV8 OFF ROAD JT SLIM STEEL FENDER FLARES

- \* DV8 OFF ROAD FRONT & REAR INNER FENDERS
- \* RUBICON EXPRESS 3.5" SUSPENSION LIFT KIT WITH TERAFLX FALCON SHOCKS
- \* TERAFLX FALCON STABILIZER KIT
- \* MOPAR AUXILIARY SWITCH BANK KIT
- \* 50" LED LIGHT BAR AND 4 RIGID INDUSTRIES DUALY D2 LED PILLAR LIGHTS
- \* SMITTYBILT BLACK TUBULAR STEPS
- \* SPRAY IN BEDLINER
- \* ORACLE LED TAIL LIGHTS
- \* DV8 OFF ROAD REAR BUMPER WITH REAR PARK DISTANCE SENSORS
- \* ALL WEATHER FLOOR MATS
- \* TAZER JL PROGRAMMER WITH SPEEDOMETER CALIBRATION
- \* 20" FUEL ANTHRACITE "REBAR 5" WHEELS
- \* BRAND NEW NITTO RIDGE GRAPPLER 38X13.50R/20 TIRES

**WE BUILD EVERY JEEP WITH PRIDE! DO NOT HESITATE TO CALL US WITH THIS JEEP BUILD. WE CAN MAKE CHANGES TO THIS JEEP BUILD OR CUSTOM BUILD ANY JEEP TO YOUR PREFERENCE. GIVE US A CALL @ 972-242-5350 OR STOP BY FOR A TEST DRIVE. 1724 LUNA RD IN CARROLLTON - 2 MILES NORTH OF 635.**

## Vehicle History Report : as Of 03/26/2023



### Snapshot

## 2023 JEEP GLADIATOR SPORT S



No accidents or damage reported to CARFAX



Well maintained vehicle



CARFAX 1-Owner vehicle



Personal vehicle



Last owned in Texas



90 Last reported odometer reading



**FREE CARFAX Report**

See the full CARFAX Report for additional information

\*carfax Snapshot is a reflection of available information on the date the report was pulled. carfax is constantly being updated with new information and is subject to change at any time.

## Our Location :



2023 Jeep Gladiator Sport 4X4 DIESEL,DUPONT KEVLAR,LIFTED,BUMPERS,NAV

Texas Vehicle Exchange - 972-242-5350 - View this car on our website at [veauto.com/7168724/ebrochure](http://veauto.com/7168724/ebrochure)

## Installed Options

### Interior

- 2 12V DC Power Outlets- 2 Seatback Storage Pockets
- 4-Way Passenger Seat -inc: Manual Recline and Fore/Aft Movement
- 6-Way Driver Seat -inc: Manual Recline, Height Adjustment, Fore/Aft Movement and Manual Lumbar Support
- 60-40 Folding Split-Bench Front Facing Fold Forward Seatback Cloth Rear Seat
- Air Filtration- Analog Appearance- Apple CarPlay- Cloth Low-Back Bucket Seats
- Compass- Cruise Control w/Steering Wheel Controls- Day-Night Rearview Mirror
- Delayed Accessory Power- Fade-To-Off Interior Lighting- Front And Rear Map Lights
- Front Center Armrest w/Storage
- Front Seats w/Cloth Back Material and Manual Driver Lumbar
- Full Carpet Floor Covering -inc: Carpet Front And Rear Floor Mats
- Full Floor Console w/Locking Storage and 2 12V DC Power Outlets
- Gauges -inc: Speedometer, Odometer, Engine Coolant Temp, Tachometer, Engine Hour Meter, Trip Odometer and Trip Computer
- Google Android Auto- HVAC -inc: Console Ducts- Illuminated Front Cupholder
- Illuminated Rear Cupholder
- Instrument Panel Bin, Dashboard Storage, Driver / Passenger And Rear Door Bins
- Integrated Center Stack Radio

- Interior Trim -inc: Metal-Look Instrument Panel Insert and Metal-Look Console Insert
- Locking Glove Box
- Manual Adjustable Front Head Restraints and Foldable Rear Head Restraints
- Manual Air Conditioning- Manual Tilt/Telescoping Steering Column
- Outside Temp Gauge- Proximity Key For Push Button Start Only
- Redundant Digital Speedometer- Sentry Key Immobilizer- Systems Monitor
- Trip Computer- USB Host Flip- Urethane Gear Shifter Material
- Vanity w/Driver And Passenger Auxiliary Mirror

---

## Exterior

- Aero-Composite Halogen Headlamps w/Delay-Off- Black Door Handles
- Black Fender Flares- Black Front Bumper w/2 Tow Hooks
- Black Rear Bumper w/1 Tow Hook- Black Side Windows Trim- Body-Colored Grille
- Clearcoat Paint- Front Fog Lamps- Full-Size Spare Tire Stored Underbody w/Crankdown
- Galvanized Steel/Aluminum Panels- Manual Convertible Top w/Fixed Roll-Over Protection
- Regular Box Style- Removable Rear Window- Steel Spare Wheel
- Tailgate Rear Cargo Access- Tires: 245/75R17 H/T- Variable Intermittent Wipers
- Wheels: 17" x 7.5" Tech Silver Aluminum

---

## Safety

- 2 12V DC Power Outlets- 2 Seatback Storage Pockets
- 4-Way Passenger Seat -inc: Manual Recline and Fore/Aft Movement
- 6-Way Driver Seat -inc: Manual Recline, Height Adjustment, Fore/Aft Movement and Manual Lumbar Support
- 60-40 Folding Split-Bench Front Facing Fold Forward Seatback Cloth Rear Seat
- Air Filtration- Analog Appearance- Apple CarPlay- Cloth Low-Back Bucket Seats
- Compass- Cruise Control w/Steering Wheel Controls- Day-Night Rearview Mirror
- Delayed Accessory Power- Fade-To-Off Interior Lighting- Front And Rear Map Lights
- Front Center Armrest w/Storage
- Front Seats w/Cloth Back Material and Manual Driver Lumbar
- Full Carpet Floor Covering -inc: Carpet Front And Rear Floor Mats
- Full Floor Console w/Locking Storage and 2 12V DC Power Outlets
- Gauges -inc: Speedometer, Odometer, Engine Coolant Temp, Tachometer, Engine Hour Meter, Trip Odometer and Trip Computer
- Google Android Auto- HVAC -inc: Console Ducts- Illuminated Front Cupholder
- Illuminated Rear Cupholder
- Instrument Panel Bin, Dashboard Storage, Driver / Passenger And Rear Door Bins
- Integrated Center Stack Radio
- Interior Trim -inc: Metal-Look Instrument Panel Insert and Metal-Look Console Insert
- Locking Glove Box
- Manual Adjustable Front Head Restraints and Foldable Rear Head Restraints
- Manual Air Conditioning- Manual Tilt/Telescoping Steering Column
- Outside Temp Gauge- Proximity Key For Push Button Start Only
- Redundant Digital Speedometer- Sentry Key Immobilizer- Systems Monitor
- Trip Computer- USB Host Flip- Urethane Gear Shifter Material
- Vanity w/Driver And Passenger Auxiliary Mirror

---

## Mechanical

- 1700# Maximum Payload- 180 Amp Alternator- 22 Gal. Fuel Tank- 3 Skid Plates
- 3.73 Rear Axle Ratio
- 4-Wheel Disc Brakes w/4-Wheel ABS, Front And Rear Vented Discs, Brake Assist and Hill Hold Control
- 50 State Emissions- 650CCA Maintenance-Free Battery w/Run Down Protection
- Auto Locking Hubs- Brake Actuated Limited Slip Differential
- Class II Towing Equipment -inc: Hitch and Trailer Sway Control
- Electro-Hydraulic Power Assist Steering- Engine Auto Stop-Start Feature
- Engine Oil Cooler- Engine: 3.6L V6 24V VVT UPG I w/ESS
- Front And Rear Anti-Roll Bars- GVWR: 6,305 lbs- HD Shock Absorbers
- Leading Link Front Suspension w/Coil Springs- Manual Transfer Case
- Normal Duty Plus Suspension- Part-Time Four-Wheel Drive
- Single Stainless Steel Exhaust- Solid Axle Rear Suspension w/Coil Springs
- Trailer Wiring Harness- Transmission: 6-Speed Manual

## Option Packages

### Factory Installed Packages

-

**ENGINE: 3.0L V6 TURBO DIESEL W/ESS**

**G3** \$4,150  
-inc: ABS 4-Wheel HD Disc Brakes w/Front FNC, Auxiliary Battery, Selective Catalytic Reduction (Urea), Anti-Spin Differential Rear Axle, Non-Lock Fuel Cap w/Discriminator, Gray EcoDiesel Badge, Supplemental Heater, 19 Gallon Fuel Tank, Tires: 245/75R17 BSW A/T Dueller, Stop-Start Dual Battery System, GVWR: 6,350 lbs

**TRANSMISSION: 8-SPEED AUTOMATIC (8HP75)**

-inc: Transmission Skid Plate, Selec-Speed Control \$2,500

**8.4" RADIO & PREMIUM AUDIO GROUP**

-inc: SiriusXM Radio Service, SiriusXM Traffic Plus, Radio: Uconnect 4C Nav w/8.4" Display, Rear View Auto Dim Mirror, Console Bin Task Light, 5-Year SiriusXM Travel Link Service, GPS Navigation, 5-Year SiriusXM Traffic Service, 4G LTE Wi-Fi Hot Spot, Media Hub w/2 Charge Only USBs, 8.4" Touchscreen Display, Off-Road Info Pages, Alpine Premium Audio System, 220 Amp Alternator, SiriusXM Satellite Radio, 400W Inverter, HD Radio, Air Conditioning w/Auto Temp Control, 1-Year SiriusXM Guardian Trial, SiriusXM Travel Link, Emergency/Assistance Call, 115V Auxiliary Power Outlet \$2,295

**AUXILIARY SWITCH GROUP**

-inc: 700 Amp Maintenance Free Battery, Auxiliary Switches \$495

**POPULAR EQUIPMENT PACKAGE**

-inc: Convenience Group, Universal Garage Door Opener, Daytime Running Lamp System, Trailer Tow Package, Trailer Hitch Zoom, Class IV Receiver Hitch, Heavy Duty Engine Cooling, 240 Amp Alternator, Black 3-Piece Hard Top, Freedom Panel Storage Bag, Rear Window Defroster, Rear Sliding Window \$1,895

**SAFETY GROUP**

-inc: ParkSense Rear Park Assist System, Blind Spot & Cross Path Detection, LED Taillamps \$1,395

**QUICK ORDER PACKAGE 26S SPORT S**

-inc: Engine: 3.0L V6 Turbo Diesel w/ESS G3, Transmission: 8-Speed Automatic (8HP75), Speed Sensitive Power Locks, Automatic Headlamps, Deep Tint Sunscreen Windows, Front 1-Touch Down Power Windows, Sport S, Power Heated Mirrors, Premium Wrapped Steering Wheel, Security Alarm, Power Tailgate Lock, Remote Keyless Entry, Sun Visors w/Illuminated Vanity Mirrors \$3,400

**Option Packages Total**  
\$16,130

---

Texas Vehicle Exchange

[tveauto.com](https://tveauto.com)

972-242-5350

1724 Luna Road

Carrollton, TX 75006

© 2023 AutoRevo - All rights reserved. - Powered by [AutoRevo](#)