

2016 GMC Sierra 2500HD Denali

TRUCK CENTER INVENTORY 901-304-7300 2601 SOUTH MENDENHALL 9013152155

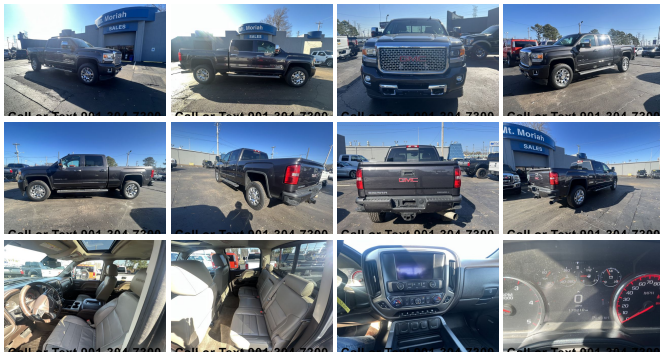
View this car on our website at mtmoriahautos.com/7168702/ebrochure



Our Price **\$38,997**

Specifications:

| | |
|--------------------|--|
| Year: | 2016 |
| VIN: | 1GT12UE83GF227176 |
| Make: | GMC |
| Stock: | BT46513 |
| Model/Trim: | Sierra 2500HD Denali |
| Condition: | Pre-Owned |
| Body: | Pickup Truck |
| Exterior: | Light Steel Gray Metallic |
| Engine: | ENGINE, DURAMAX 6.6L TURBO DIESEL V8, B20-DIESEL COMPATIBLE |
| Interior: | Leather |
| Mileage: | 170,144 |
| Drivetrain: | 4 Wheel Drive |



Call 901.../304///7300 for informaton. Financing available with approved credit. Vehicle can be seen at the Mt. Moriah Truck Center, 2601 South Mendenhall, east of Scottsway, directly across from MPD Substation.

ASK FOR THE TRUCK CENTER!!!

Please ask for the Truck Center @ Mt Moriah Auto Sales

Our Location :



2016 GMC Sierra 2500HD Denali

Mt. Moriah Auto Sales - 9013152155 - View this car on our website at mtmoriahautos.com/7168702/ebrochure

Installed Options

Interior

- Air conditioning, dual-zone automatic climate control
- Assist handle, front passenger and driver on A-pillars
- Console, floor mounted with cup holders, cell phone storage, power cord management, hanging file holder capability and (K4C) wireless charging
- Cruise control, steering wheel-mounted- Defogger, rear-window electric
- Display, customizable driver display, 8" multi-color configurable- Door locks, power
- Floor covering, color-keyed carpeting mats
- Floor mats, color-keyed carpeted first and second row
- Front and Rear Park Assist, Ultrasonic (Included and only available with (Y86) Driver Alert Package.)
- Instrumentation, 6-gauge cluster featuring speedometer, fuel level, engine temperature, tachometer, voltage and oil pressure
- Mirror, inside rearview auto-dimming
- OnStar Guidance Plan for 6 months including Automatic Crash Response, Stolen Vehicle Assistance, Roadside Assistance, Turn-by-Turn Navigation and more (trial excludes Hands-Free Calling) (Visit www.onstar.com for coverage map, details and system limitations. Services may vary by model and conditions. Advanced Diagnostics on 1500 models only.)
- OnStar with 4G and built-in Wi-Fi hotspot to connect to the internet at 4G LTE speeds, includes 3GB or 3 months OnStar Data Trial (whichever comes first) (Available 4G LTE Wi-Fi requires compatible mobile device, active OnStar subscription and data plan after trial.)
- Pedals, power-adjustable- Power outlet, 110-volt AC- Remote Keyless Entry
- Remote vehicle starter system- Seat trim, Perforated leather-appointed
- Seat, rear 60/40 folding bench (folds up), 3-passenger (includes child seat top tether anchor)
- Seating, heated and vented perforated leather-appointed front bucket
- Seats, front full-feature leather-appointed bucket with (KA1) heated seat cushions and seat backs. Includes 12-way power driver and front passenger seat adjusters, including 4-way power lumbar control, 2-position driver memory, adjustable head restraints, (D07) floor console and storage pockets and (K4C) wireless charging
- Steering column, manual Tilt-Wheel and telescoping- Steering wheel audio controls

- Steering wheel, heated, leather wrapped with audio and cruise controls
- Theft-deterrent system, unauthorized entry
- Universal Home Remote (Not included when (VYU) Snow Plow Prep Package is ordered.)
- Visors, driver and front passenger illuminated vanity mirrors
- Window, power, rear sliding with rear defogger (Not included when (VYU) Snow Plow Prep Package is ordered.)
- Windows, power with driver express up and down and express down on all other windows

Exterior

- Bed Liner, Spray-on Pickup box bed liner consisting of high pressure, chemically bonded, sprayed-on polyurea & polyurethane liner formulation. Liner is permanently bonded to the truck bed providing a water tight seal. Includes embossed Denali logo on front bed wall. The textured, non-skid surface is black in color and robotically applied. Spray-on liner covers entire bed interior surface below side rails, including tailgate, front box top rail, gauge hole plugs and lower tie down loops. (Not available with (VZX) bed liner, LPO.)
- Bumper, front, body-color- Bumper, rear body-color with bumper CornerSteps
- CornerStep, rear bumper- Door handles, chrome- Fog lamps, front, halogen
- Glass, deep-tinted
- Headlamps, high intensity discharge (HID) projector-beam with GMC signature LED lighting
- LED Lighting, cargo box with switch on center switch bank
- LPO, Assist steps, chromed tubular, 6" rectangular (dealer-installed) (May be substituted with (VXJ) assist steps, LPO. (VXH) is deleted when (VXJ) assist steps, LPO is specified.)
- Lamps, cargo area, cab mounted with switch on center switch bank - Mirror caps, chrome
- Mirrors, outside chrome cap, heated power-adjustable, power-folding and driver-side auto-dimming with integrated turn signal indicators and puddle lamps (includes driver's side spotter mirror)
- Moldings, bodyside, chrome- Remote Locking Tailgate
- Tailgate and bed rail protection caps, top - Tailgate, EZ-Lift and Lower
- Tire carrier lock keyed cylinder lock that utilizes same key as ignition and door
- Tires, LT265/60R20E all-terrain, blackwall
- Wheel, 18" x 8" (45.7 cm x 20.3 cm) full-size, steel spare. Spare not included with (ZW9) pickup box delete unless a spare tire is ordered. (Requires 18" or 20" wheels and tires.)
- Wheelhouse liners, rear- Wheels, 20" (50.8 cm) chromed cast aluminum

Safety

- Air conditioning, dual-zone automatic climate control
- Assist handle, front passenger and driver on A-pillars
- Console, floor mounted with cup holders, cell phone storage, power cord management, hanging file holder capability and (K4C) wireless charging
- Cruise control, steering wheel-mounted- Defogger, rear-window electric
- Display, customizable driver display, 8" multi-color configurable- Door locks, power
- Floor covering, color-keyed carpeting mats
- Floor mats, color-keyed carpeted first and second row
- Front and Rear Park Assist, Ultrasonic (Included and only available with (Y86) Driver Alert Package.)
- Instrumentation, 6-gauge cluster featuring speedometer, fuel level, engine temperature, tachometer, voltage and oil pressure
- Mirror, inside rearview auto-dimming
- OnStar Guidance Plan for 6 months including Automatic Crash Response, Stolen Vehicle Assistance, Roadside Assistance, Turn-by-Turn Navigation and more (trial excludes Hands-Free Calling) (Visit www.onstar.com for coverage map, details and system limitations. Services may vary by model and conditions. Advanced Diagnostics on 1500 models only.)
- OnStar with 4G and built-in Wi-Fi hotspot to connect to the internet at 4G LTE speeds, includes 3GB or 3 months OnStar Data Trial (whichever comes first) (Available 4G LTE Wi-Fi requires compatible mobile device, active OnStar subscription and data plan after trial.)
- Pedals, power-adjustable- Power outlet, 110-volt AC- Remote Keyless Entry
- Remote vehicle starter system- Seat trim, Perforated leather-appointed
- Seat, rear 60/40 folding bench (folds up), 3-passenger (includes child seat top tether anchor)
- Seating, heated and vented perforated leather-appointed front bucket
- Seats, front full-feature leather-appointed bucket with (KA1) heated seat cushions and seat backs. Includes 12-way power driver and front passenger seat adjusters, including 4-way power lumbar control, 2-position driver memory, adjustable head restraints,(D07) floor console and storage pockets and (K4C) wireless charging
- Steering column, manual Tilt-Wheel and telescoping- Steering wheel audio controls
- Steering wheel, heated, leather wrapped with audio and cruise controls
- Theft-deterrent system, unauthorized entry
- Universal Home Remote (Not included when (VYU) Snow Plow Prep Package is ordered.)
- Visors, driver and front passenger illuminated vanity mirrors
- Window, power, rear sliding with rear defogger (Not included when (VYU) Snow Plow Prep Package is ordered.)
- Windows, power with driver express up and down and express down on all other windows

Mechanical

Standard

- Air cleaner, high-capacity- Alternator, 150 amps
- Battery, heavy-duty 720 cold-cranking amps/80 Amp-hr, maintenance-free with rundown protection and retained accessory power
- Brakes, 4-wheel antilock, 4-wheel disc with DuraLife brake rotors
- Cargo tie downs (4), movable upper- Cooling, auxiliary external transmission oil cooler
- Cooling, external engine oil cooler- Differential, heavy-duty locking rear
- Engine, Vortec 6.0L Variable Valve Timing V8 SFI E85-compatible, FlexFuel capable of running on unleaded or up to 85% ethanol (360 hp [268.4 kW] @ 5400 rpm, 380 lb-ft of torque [515.0 N-m] @ 4200 rpm
- Exhaust, aluminized stainless-steel muffler and tailpipe- Four wheel drive
- Frame, fully-boxed, hydroformed front section
- GVWR, 9500 lbs. (4309 kg) (Requires (L96) Vortec 6.0L V8 SFI engine or (LC8) 6.0L V8 SFI Gaseous engine.)
- Pickup box- Rear axle, 4.10 ratio (Requires (L96) Vortec 6.0L V8 SFI engine.)
- Recovery hooks, front, frame-mounted, black
- Steering, Power with Active Hydraulic Assist, recirculating ball Digital Steering Assist
- Steering, Recirculating Ball with smart flow power steering system
- Suspension Package, Standard includes 51mm twin tube shock absorbers and 33mm front stabilizer bar
- Trailer brake controller, integrated
- Trailering equipment Trailering hitch platform 2.5" with a 2.0" insert for HD, 7-wire harness with independent fused trailering circuits mated to a 7-way sealed connector to hook up parking lamps, backup lamps, right and left turn signals, an electric brake lead, battery and a ground. The trailer connector also includes the 4-way for use on trailers without brakes - park, brake/turn lamps
- Transfer case, electronic shift with rotary dial controls (Requires 4WD models.)
- Transmission, 6-speed automatic, heavy-duty, electronically controlled with overdrive and tow/haul mode. Includes Cruise Grade Braking and Powertrain Grade Braking (Requires (L96) Vortec 6.0L V8 SFI engine or (LC8) 6.0L V8 SFI Gaseous engine.)
- Underbody Shield, frame-mounted shields includes front underbody shield starting behind front bumper and running to first cross-member, protecting front underbody, oil pan, differential case and transfer case

Option Packages

Factory Installed Packages

- _____
ENGINE, DURAMAX 6.6L TURBO DIESEL
V8, B20-DIESEL COMPATIBLE
(397 hp [296.0 kW] @ 3000 rpm, \$8,595
765 lb-ft of torque [1032.8 N-m] @ 1600 rpm)

- _____
Option Packages Total
\$8,595

*Price does not include taxes, tags, title, license, registration, documentation fee of \$698.00 or other delivery charges.

Mt. Moriah Auto Sales

mtmoriahautos.com

9013152155

2571 MT MORIAH RD

Memphis, TN 38115

© 2023 AutoRevo - All rights reserved. - Powered by AutoRevo