

paniaguaautos.com
(706)529-1919



2008 Honda CR-V LX

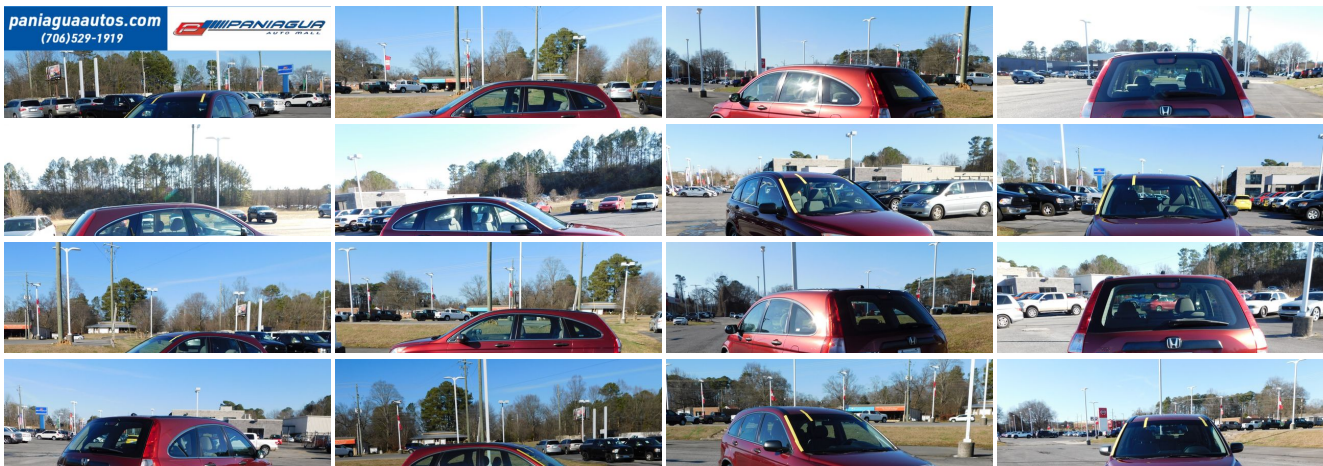
Our Price \$5,995

View this vehicle on our website at paniaguaautos.com



706-529-1919 & 423-472-4045
1776 E. Walnut Ave, Dalton, GA 30721

Photos
Details
Contact





Specifications:

Year:	2008
VIN:	JHLRE383X8C012629
Make:	Honda
Stock:	9500
Model/Trim:	CR-V LX
Condition:	Pre-Owned
Body:	SUV
Exterior:	Burgundy
Engine:	2.4L DOHC MPFI 16-valve i-VTEC I4 engine
Interior:	Gray Cloth
Transmission:	AUTOMATIC
Mileage:	217,606
Drivetrain:	Front Wheel Drive
Economy:	City 20 / Highway 27

Vehicle Description

2008 HONDA CR-V LX 2.4L 4 CYLINDER AUTOMATIC NICE CLEAN CLOTH INTERIOR ALL POWER HURRY IN TODAY AND CHECK OUT OUR MOST RECENT INVENTORY

Installed Options

Interior

- 160-watt AM/FM stereo w/CD player-inc: (4) speakers, MP3/WMA playback, auxiliary input jack, speed-sensitive volume control
- Floor mats- Pwr door & tailgate locks- Remote entry system
- (4) cargo area tie-down anchors- (8) front & rear beverage holders
- 12V pwr outlets-inc: front & rear
- 60/40 split sliding fold & tumble forward rear seats-inc: active head restraints, 40/20/40 reclining seatbacks w/center pass-through
- Air conditioning w/air-filtration system- Ambient console lighting- Cargo area light
- Conversation mirror w/sunglasses holder- Cruise control- Door pocket storage bins
- Driver-side garment hook- Dual visor vanity mirrors- Immobilizer theft-deterrent system
- Indicator lights-inc: low fuel, low-oil pressure, door/tailgate open, average fuel consumption, miles-to-empty
- Instrument panel w/white & blue backlit gauges-inc: digital odometer, (2) digital trip meters
- Instrument panel-mounted shifter- Maintenance Minder system- Map lights
- Pwr windows w/driver auto-up/down- Rear seat heater ducts- Rear window defroster
- Reclining cloth front bucket seats-inc: driver seat manual height adjustment, adjustable head restraints
- Remote fuel filler door release- Retractable center tray table
- Tilt & telescopic steering column - Tire pressure monitoring system
- Under seat storage bin- Upper & lower glove compartments

Exterior

- Daytime running lights- 17" styled steel wheels- 2-speed intermittent windshield wipers
- Chrome window trim- Compact spare tire & wheel- Folding pwr mirrors
- Full-length taillights- Heat-rejecting green-tinted glass
- Multi-reflector halogen headlamps- P225/65TR17 all-season tires
- Rear intermittent wiper w/washer

Safety

- 160-watt AM/FM stereo w/CD player-inc: (4) speakers, MP3/WMA playback, auxiliary input jack, speed-sensitive volume control
- Floor mats- Pwr door & tailgate locks- Remote entry system
- (4) cargo area tie-down anchors- (8) front & rear beverage holders
- 12V pwr outlets-inc: front & rear
- 60/40 split sliding fold & tumble forward rear seats-inc: active head restraints, 40/20/40 reclining seatbacks w/center pass-through
- Air conditioning w/air-filtration system- Ambient console lighting- Cargo area light
- Conversation mirror w/sunglasses holder- Cruise control- Door pocket storage bins
- Driver-side garment hook- Dual visor vanity mirrors- Immobilizer theft-deterrent system
- Indicator lights-inc: low fuel, low-oil pressure, door/tailgate open, average fuel consumption, miles-to-empty
- Instrument panel w/white & blue backlit gauges-inc: digital odometer, (2) digital trip meters
- Instrument panel-mounted shifter- Maintenance Minder system- Map lights
- Pwr windows w/driver auto-up/down- Rear seat heater ducts- Rear window defroster
- Reclining cloth front bucket seats-inc: driver seat manual height adjustment, adjustable head restraints
- Remote fuel filler door release- Retractable center tray table
- Tilt & telescopic steering column - Tire pressure monitoring system
- Under seat storage bin- Upper & lower glove compartments

Mechanical

- Anti-lock braking system (ABS) w/electronic brake distribution (EBD)- Brake assist
- Vehicle stability assist (VSA) w/traction control
- 2.4L DOHC MPFI 16-valve i-VTEC I4 engine - 5-speed automatic transmission w/OD
- Advanced compatibility engineering (ACE) body structure - Drive-by-wire throttle
- Front & rear stabilizer bars- Front wheel drive- MacPherson strut front suspension
- Multi-link rear suspension- Pwr front ventilated/rear solid disc brakes
- Variable pwr rack-and-pinion steering

We sale used vehicles as is no warranty. We sale extended warranties ask one of our sales rep. for details.

Paniagua Auto Mall

Paniagua Auto Mall

View this car on our website at paniaguaautos.com/7168463

Website: paniaguaautos.com

Phone: 706-529-1919& 423-472-4045

Map: 1776 E. Walnut Ave , Dalton, GA 30721

