



2022 Ram 1500 Limited

Website Price \$64,995

View this vehicle on our website at [autoparkdallas.com](https://www.autoparkdallas.com)



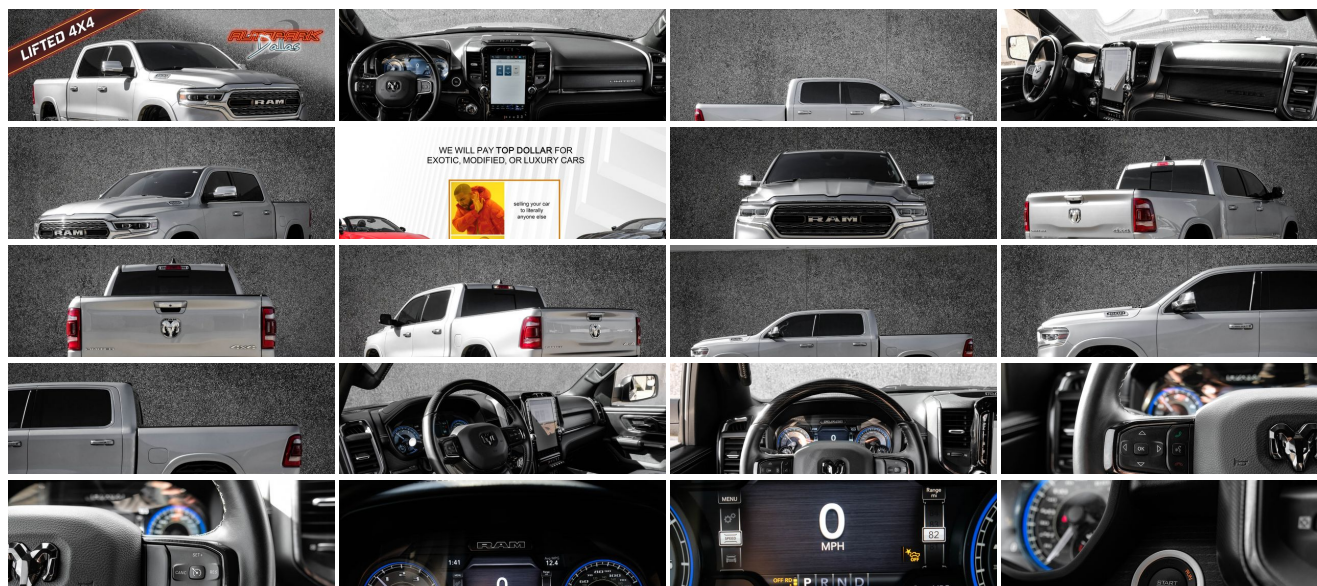
(214) 945-2601

2061 S Stemmons Fwy , Lewisville, TX 75067

Photos

Details

Contact



Specifications:

Year:	2022
VIN:	1C6SRFHT2NN207104
Make:	Ram
Stock:	1032-TR
Model/Trim:	1500 Limited
Condition:	Pre-Owned
Body:	Pickup Truck
Exterior:	Billet Silver Metallic Clearcoat
Engine:	ENGINE: 5.7L V8 HEMI MDS VVT
Interior:	Black Leather
Mileage:	12,750
Drivetrain:	4 Wheel Drive
Economy:	City 15 / Highway 21

Vehicle Description

Installed Options

Interior

- 8-Way Power Driver Seat -inc: Power Recline, Height Adjustment, Fore/Aft Movement and Cushion Tilt
- Day-Night Auto-Dimming Rearview Mirror
- FOB Controls -inc: Cargo Access, Remote Engine Start and Air Suspension
- Gauges -inc: Speedometer, Odometer, Voltmeter, Oil Pressure, Engine Coolant Temp, Tachometer, Oil Temperature, Transmission Fluid Temp, Engine Hour Meter, Trip Odometer and Trip Computer
- Heated Front Seats- Heated Second Row Seats
- Power 1st Row Windows w/Driver And Passenger 1-Touch Up/Down
- Power Door Locks w/Autolock Feature- Power Rear Windows
- Premium Leather Trimmed Bucket Seats
- Proximity Key For Doors And Push Button Start
- Remote Keyless Entry w/Integrated Key Transmitter, Illuminated Entry and Panic Button
- Seats w/Leatherette Back Material- Smart Device Remote Engine Start- Trip Computer
- Ventilated Front Seats- 2 12V DC Power Outlets
- 2 12V DC Power Outlets and 2 120V AC Power Outlets - 4 Way Front Headrests
- 4G LTE Wi-Fi Hot Spot Mobile Hotspot Internet Access- Air Filtration
- Analog Appearance- Bucket Seats- Compass
- Cruise Control w/Steering Wheel Controls- Delayed Accessory Power
- Driver And Passenger Visor Vanity Mirrors w/Driver And Passenger Illumination
- Driver Seat Memory- Dual Zone Front Automatic Air Conditioning w/Front Infrared
- Exterior Mirrors w/Memory- Fade-To-Off Interior Lighting
- Front Center Armrest w/Storage and Rear Center Armrest- Front Map Lights
- Front Seat Back Map Pockets
- Full Carpet Floor Covering -inc: Rubber w/Carpet Inserts Front And Rear Floor Mats
- Full Cloth Headliner- Full Length Premium Floor Console- Garage Door Transmitter
- HVAC -inc: Underseat Ducts and Console Ducts - Heated Steering Wheel
- Illuminated Front Cupholder- Illuminated Locking Glove Box
- Instrument Panel Bin, Dashboard Storage, Interior Concealed Storage, Driver / Passenger And Rear Door Bins and 2nd Row Underseat Storage
- Interior Trim -inc: Deluxe Sound Insulation, Genuine Wood/Metal-Look Instrument Panel Insert, Genuine Wood/Metal-Look Door Panel Insert, Leather/Genuine Wood Console Insert, Chrome/Metal-Look Interior Accents, Leather Upholstered Dashboard and Metal-Look Overhead Console Insert
- Leather Door Trim Insert- Leather/Genuine Wood Steering Wheel
- Manual Adjustable Rear Head Restraints- Manual Tilt/Telescoping Steering Column
- Memory Settings -inc: Audio and Pedals- Metal-Look Gear Shifter Material
- Mini Overhead Console, 2 12V DC Power Outlets and 2 120V AC Power Outlets
- Outside Temp Gauge- Passenger Seat- Perimeter Alarm- Pickup Cargo Box Lights
- Power 4-Way Driver Lumbar Adjust- Power 4-Way Passenger Lumbar Adjust
- Power 8-Way Driver & Passenger Seats - Power Adjustable Pedals
- Rear 60/40 Folding Split Recline Seat- Rear Cupholder

Option Packages

Factory Installed Packages

ENGINE: 5.7L V8 HEMI MDS VVT

- Redundant Digital Speedometer- Remote Releases -Inc: Power Cargo Access
- Sentry Key Immobilizer- Smart Device Integration
- Split-Bench Front Facing Fold-Up Cushion Leather Rear Seat- Systems Monitor
- Valet Function- Voice Recorder

Exterior

- Chrome Front Bumper w/Chrome Rub Strip/Fascia Accent and 2 Tow Hooks
- Exterior Mirrors w/Heating Element- Exterior Mirrors w/Supplemental Signals
- Full-Size Spare Tire Stored Underbody w/Crankdown- Power w/Tilt Down Side Mirrors
- Power-Folding Mirrors- Spray-In Bed Liner
- Tailgate/Rear Door Lock Included w/Power Door Locks
- Tires: 275/55R20 All Season LRR- Wheels: 20" x 9" Aluminum Painted/Polished
- Auto Dim Exterior Driver Mirror - Auto Dim Exterior Passenger Mirror
- Auto On/Off Aero-Composite Led Low/High Beam Daytime Running Directionally Adaptive Auto High-Beam Headlamps w/Delay-Off
- Cargo Lamp w/High Mount Stop Light
- Chrome Bodyside Moldings and Body-Colored Fender Flares- Chrome Door Handles
- Chrome Exterior Mirrors- Chrome Grille- Chrome Rear Step Bumper
- Chrome Side Windows Trim- Clearcoat Paint- Convex Wide-Angle Mirror Insert
- Deep Tinted Glass- Dual Rear Exhaust w/Bright Tips- Exterior Mirrors Courtesy Lamps
- Front Fog Lamps- Galvanized Steel/Aluminum Panels- HEMI Badge
- Headlights-Automatic Highbeams- LED Brakelights- Laminated Glass
- Power Rear Window w/Defroster- Power Running Boards
- Rain Detecting Variable Intermittent Wipers- Regular Box Style- Steel Spare Wheel
- Tailgate Rear Cargo Access

Safety

- 8-Way Power Driver Seat -inc: Power Recline, Height Adjustment, Fore/Aft Movement and Cushion Tilt
- Day-Night Auto-Dimming Rearview Mirror
- FOB Controls -inc: Cargo Access, Remote Engine Start and Air Suspension
- Gauges -inc: Speedometer, Odometer, Voltmeter, Oil Pressure, Engine Coolant Temp, Tachometer, Oil Temperature, Transmission Fluid Temp, Engine Hour Meter, Trip Odometer and Trip Computer
- Heated Front Seats- Heated Second Row Seats
- Power 1st Row Windows w/Driver And Passenger 1-Touch Up/Down
- Power Door Locks w/Autolock Feature- Power Rear Windows
- Premium Leather Trimmed Bucket Seats
- Proximity Key For Doors And Push Button Start
- Remote Keyless Entry w/Integrated Key Transmitter, Illuminated Entry and Panic Button
- Seats w/Leatherette Back Material- Smart Device Remote Engine Start- Trip Computer
- Ventilated Front Seats- 2 12V DC Power Outlets
- 2 12V DC Power Outlets and 2 120V AC Power Outlets - 4 Way Front Headrests
- 4G LTE Wi-Fi Hot Spot Mobile Hotspot Internet Access- Air Filtration
- Analog Appearance- Bucket Seats- Compass
- Cruise Control w/Steering Wheel Controls- Delayed Accessory Power
- Driver And Passenger Visor Vanity Mirrors w/Driver And Passenger Illumination
- Driver Seat Memory- Dual Zone Front Automatic Air Conditioning w/Front Infrared
- Exterior Mirrors w/Memory- Fade-To-Off Interior Lighting
- Front Center Armrest w/Storage and Rear Center Armrest- Front Map Lights
- Front Seat Back Map Pockets
- Full Carpet Floor Covering -inc: Rubber w/Carpet Inserts Front And Rear Floor Mats
- Full Cloth Headliner- Full Length Premium Floor Console- Garage Door Transmitter
- HVAC -inc: Underseat Ducts and Console Ducts- Heated Steering Wheel
- Illuminated Front Cupholder- Illuminated Locking Glove Box
- Instrument Panel Bin, Dashboard Storage, Interior Concealed Storage, Driver / Passenger And Rear Door Bins and 2nd Row Underseat Storage
- Interior Trim -inc: Deluxe Sound Insulation, Genuine Wood/Metal-Look Instrument Panel Insert, Genuine Wood/Metal-Look Door Panel Insert, Leather/Genuine Wood Console Insert, Chrome/Metal-Look Interior Accents, Leather Upholstered Dashboard and Metal-Look Overhead Console Insert
- Leather Door Trim Insert- Leather/Genuine Wood Steering Wheel
- Manual Adjustable Rear Head Restraints- Manual Tilt/Telescoping Steering Column
- Memory Settings -inc: Audio and Pedals- Metal-Look Gear Shifter Material
- Mini Overhead Console, 2 12V DC Power Outlets and 2 120V AC Power Outlets
- Outside Temp Gauge- Passenger Seat- Perimeter Alarm- Pickup Cargo Box Lights
- Power 4-Way Driver Lumbar Adjust- Power 4-Way Passenger Lumbar Adjust
- Power 8-Way Driver & Passenger Seats- Power Adjustable Pedals
- Rear 60/40 Folding Split Recline Seat- Rear Cupholder
- Redundant Digital Speedometer- Remote Releases -Inc: Power Cargo Access
- Sentry Key Immobilizer- Smart Device Integration
- Split-Bench Front Facing Fold-Up Cushion Leather Rear Seat- Systems Monitor

- Split-Bench Front Facing Fold-Up Cushion Leather Rear Seat- Systems Monitor
- Valet Function- Voice Recorder

Mechanical

- HD Shock Absorbers- Short And Long Arm Front Suspension w/Air Springs
- Solid Axle Rear Suspension w/Air Springs
- Transmission w/Driver Selectable Mode and Sequential Shift Control w/Steering Wheel Controls
- Transmission: 8-Speed Automatic (8HP75)- 1620# Maximum Payload
- 220 Amp Alternator- 26 Gal. Fuel Tank- 3.21 Rear Axle Ratio
- 4-Corner Auto-Leveling Suspension
- 4-Wheel Disc Brakes w/4-Wheel ABS, Front Vented Discs, Brake Assist, Hill Hold Control and Electric Parking Brake
- 48V Belt Starter Generator- 50 State Emissions- 730CCA Maintenance-Free Battery
- Auto Locking Hubs
- Automatic w/Driver Control Height Adjustable Automatic w/Driver Control Ride Control Suspension
- Class IV Towing Equipment -inc: Hitch and Trailer Sway Control
- Electric Power-Assist Steering- Electronic Transfer Case
- Engine: 5.7L V8 HEMI MDS VVT- Front And Rear Anti-Roll Bars- GVWR: 7,100 lbs
- Heavy Duty Engine Cooling- Part And Full-Time Four-Wheel Drive
- Quasi-Dual Exhaust w/Chrome Tailpipe Finisher- Trailer Wiring Harness



Auto Park Dallas

View this car on our website at autoparkdallas.com/7167824

Website: autoparkdallas.com

Phone: (214) 945-2601

Map: [2061 S Stemmons Fwy, Lewisville, TX 75067](#)

