

2005 Pontiac Vibe

View this car on our website at paniaguaautos.com/7167154/ebrochure

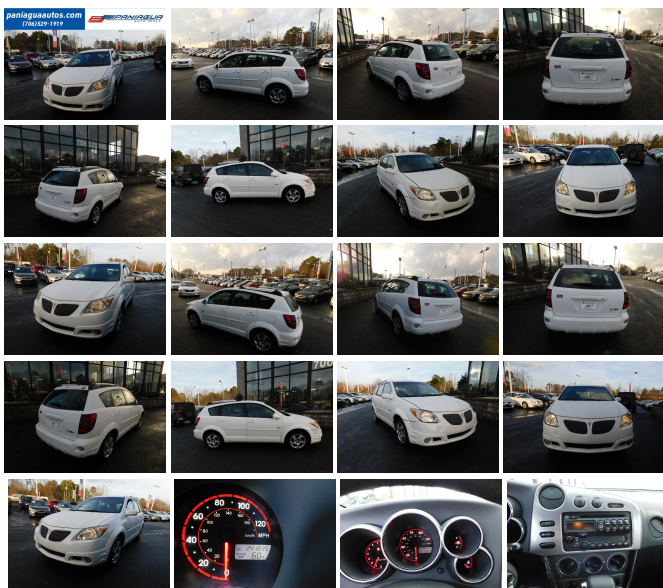


Our Price **\$2,995**

Specifications:

Year:	2005
VIN:	5Y2SL63855Z441064
Make:	Pontiac
Stock:	9535
Model/Trim:	Vibe
Condition:	Pre-Owned
Body:	Sedan
Exterior:	White
Engine:	ENGINE, 1.8L VVT-I, 4-CYLINDER
Interior:	Black Cloth
Transmission:	AUTOMATIC
Mileage:	241,835
Drivetrain:	Front Wheel Drive
Economy:	City 29 / Highway 34

2005 PONTIAC VIBE 1.8L 4 CYLINDER AUTOMATIC CLOTH
INTERIOR STOP BY TODAY AND CHECK OUT OUR MOST RECENT
INVENTORY WE HAVE THE BEST SELECTION OF USED VEHICLES
IN TOWN COME SEE US SOON



2005 Pontiac Vibe

Paniagua Auto Mall - 706-529-1919& 423-472-4045 - View this car on our website at paniaguaautos.com/7167154/ebrochure

Our Location :



2005 Pontiac Vibe

Paniagua Auto Mall - 706-529-1919& 423-472-4045 - View this car on our website at paniaguaautos.com/7167154/ebrochure

Installed Options

Interior

- Power outlets, 2-prong, household-style on instrument panel, 115 volt, 100 watt, 1 amp
- Seats, front bucket, includes vertical adjust head restraint
- Sound system, ETR AM/FM stereo with CD player, includes Radio Data System, digital clock, programmable equalizer, TheftLock and 4-speakers
- Visors, vanity mirrors, driver and front passenger with visor extension (Not available with (AY0) Air bags, seat mounted side-impact)
- Air conditioning, front manual- Antenna, roof-mounted
- Assist handles, 1 front passenger and 2 rear outboard with coat hooks - Cargo cover, rear
- Console, floor, storage, includes cupholders and armrest
- Defogger, rear-window, electric, includes front and side window outlets
- Floor mats, carpeted, front and rear, color-keyed- Heat ducts, rear seat
- Instrumentation, analog, includes speedometer, tachometer, trip odometer, engine temperature, fuel gauge, outside temperature display, chrome accented and warning system for front passenger safety belts, ignition key, headlamps on and door ajar
- Lighting, interior, includes illuminated entry with delay and cargo area light
- Mirror, inside rearview, manual day/night (Required with (PCR) Moon and Tunes Value Package and when (PDN) Power Group Value Package and (PCR) Moon and Tunes Value Package are ordered together.)
- Seat adjuster, manual driver side height adjust
- Seat, front passenger, folds flat with rear table surface and vertical head restraint
- Seats, rear, 60/40, split-bench, flat-folding with outboard vertical adjust head restraint
- Steering wheel, tilt
- Storage, includes 3 rear cargo bins, driver side pull down (left of instrument panel and below shifter), interior rear track accessory system with 4 tie-downs and 4 chrome tie-down hooks in rear cargo area securing loose gear

Exterior

- Daytime running lamps- Fog lamps, front, integral in front fascia
- Glass, Solar-Ray light tinted
- Headlamps, halogen, composite, includes automatic exterior lamp control and flash-to-pass

Option Packages

Factory Installed Packages

ENGINE, 1.8L VVT-I, 4-CYLINDER

(FWD-130 HP [96.9 kW] @ 6000 rpm, 125 lb.-ft.
[168.8 N-m] @ 4400 rpm) (AWD-123 HP [91.8
kW] @ 6000 rpm, 118 lb.-ft. [159.3 N-m] @ 4400
rpm)

- Liftgate, rear with liftglass- Luggage rack, rooftop, includes side rails
- Mirrors, outside rearview, power- Wipers, intermittent, front and rear, includes washer

Safety

- Power outlets, 2-prong, household-style on instrument panel, 115 volt, 100 watt, 1 amp
- Seats, front bucket, includes vertical adjust head restraint
- Sound system, ETR AM/FM stereo with CD player, includes Radio Data System, digital clock, programmable equalizer, TheftLock and 4-speakers
- Visors, vanity mirrors, driver and front passenger with visor extension (Not available with (AY0) Air bags, seat mounted side-impact)
- Air conditioning, front manual- Antenna, roof-mounted
- Assist handles, 1 front passenger and 2 rear outboard with coat hooks - Cargo cover, rear
- Console, floor, storage, includes cupholders and armrest
- Defogger, rear-window, electric, includes front and side window outlets
- Floor mats, carpeted, front and rear, color-keyed- Heat ducts, rear seat
- Instrumentation, analog, includes speedometer, tachometer, trip odometer, engine temperature, fuel gauge, outside temperature display, chrome accented and warning system for front passenger safety belts, ignition key, headlamps on and door ajar
- Lighting, interior, includes illuminated entry with delay and cargo area light
- Mirror, inside rearview, manual day/night (Required with (PCR) Moon and Tunes Value Package and when (PDN) Power Group Value Package and (PCR) Moon and Tunes Value Package are ordered together.)
- Seat adjuster, manual driver side height adjust
- Seat, front passenger, folds flat with rear table surface and vertical head restraint
- Seats, rear, 60/40, split-bench, flat-folding with outboard vertical adjust head restraint
- Steering wheel, tilt
- Storage, includes 3 rear cargo bins, driver side pull down (left of instrument panel and below shifter), interior rear track accessory system with 4 tie-downs and 4 chrome tie-down hooks in rear cargo area securing loose gear

Mechanical

- Brakes, front disc/rear drum- Tires, P205/55R16, all-season, blackwall
- Transmission, 5-speed manual- Wheels, 16" (40.6 cm) steel with bolt-on wheel covers
- Engine, 1.8L VVT-i, 4-cylinder (FWD - 130 HP [96.9 kW] @ 6000 rpm, 125 lb.-ft. [168.8 N-m] @ 4400 rpm) (AWD - 123 HP [91.8 kW] @ 6000 rpm, 118 lb.-ft. [159.3 N-m] @ 4400 rpm)
- Exhaust, stainless-steel- Front wheel drive
- Fuel capacity, approximate, 13 gallons (49 liters)
- Suspension, front independent, rear torsion beam includes front and rear stabilizer bar
- Tire, spare, compact

We sale used vehicles as is no warranty. We sale extended warranties ask one of our sales rep. for details.

Paniagua Auto Mall

paniaguaautos.com

706-529-1919& 423-472-4045

1776 E. Walnut Ave

Dalton, Georgia 30721

© 2024 AutoRevo - All rights reserved. - Powered by AutoRevo