



2021 GMC Sierra 1500 Elevation

Our Price \$0

View this vehicle on our website at autodepotcalexico.com

Auto Depot of Calexico

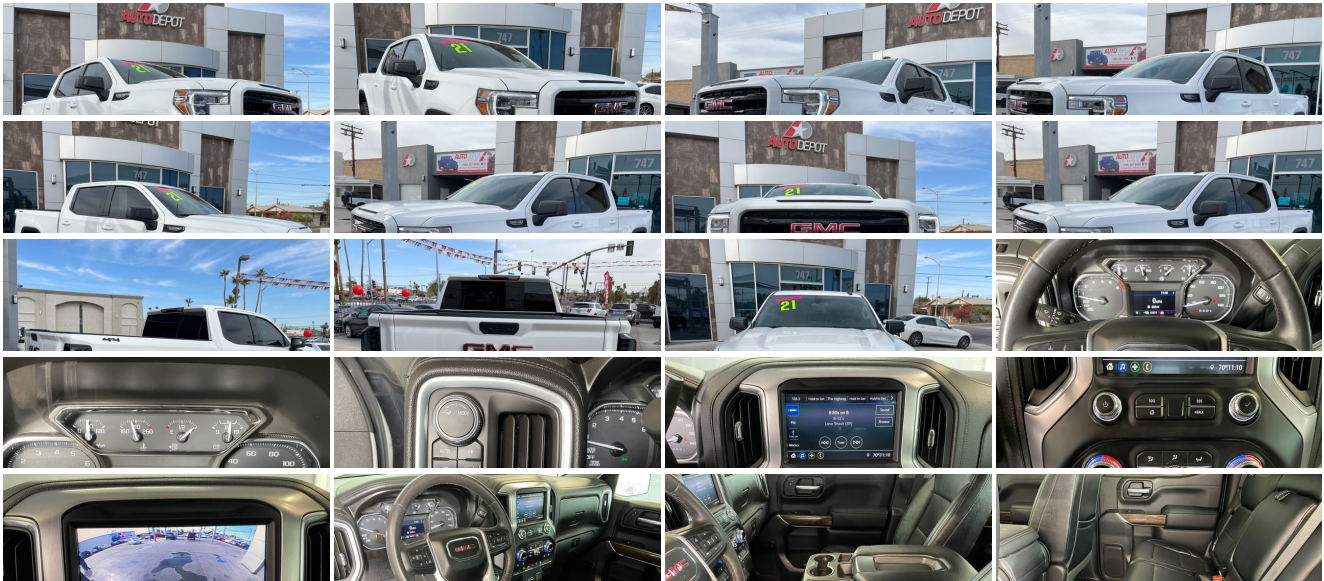
760-357-0043

747 Imperial Ave , Calexico, CA 92231

Photos

Details

Contact



Specifications:

Year:	2021
VIN:	3GTU9CEDXMG281925
Make:	GMC
Stock:	6333
Model/Trim:	Sierra 1500 Elevation
Condition:	Pre-Owned
Body:	Pickup Truck
Exterior:	Summit White
Engine:	ENGINE, 5.3L ECOTEC3 V8
Interior:	Jet Black Leather
Mileage:	42,966
Drivetrain:	4 Wheel Drive
Economy:	City 14 / Highway 20

Vehicle Description

Installed Options

Interior

- Air conditioning, dual-zone automatic climate control (Models built before 9-6-2021 feature digital temperature displays on the Climate Control Knobs. Certain vehicles built on or after 9-6-2021 will include (00D) Not Equipped with Climate Control Knob Digital Temperature Display, which removes the digital temperatures displayed on the Climate Control Knobs. See dealer for details.)
- Defogger, rear-window electric- Door locks, power
- Floor mats, rubberized-vinyl front (Deleted when (RIA) All-weather floor liner, LPO is ordered.)
- Floor mats, rubberized-vinyl rear (Deleted when (RIA) All-weather floor liner, LPO is ordered.)
- Keyless Open and Start- Power outlet, front auxiliary, 12-volt
- Power outlet, rear auxiliary, 12-volt- Seat adjuster, driver 10-way power including lumbar
- Seating, heated driver and front outboard passenger
- Seats, front 40/20/40 split-bench with covered armrest storage and under-seat storage (lockable)
- Steering column, manual Tilt-Wheel and telescoping- Steering wheel, heated
- Window, power front, passenger express down
- Windows, power front, drivers express up/down- Windows, power rear, express down
- Air vents, rear
- Assist handles front A-pillar mounted for driver and passenger, rear B-pillar mounted
- Brake lining wear indicator- Compass, located in instrument cluster
- Cruise control, steering wheel-mounted
- Driver Information Center, 4.2" diagonal color display includes driver personalization
- Exterior Temperature Display, located in radio display
- Floor covering, color-keyed carpeting
- GMC Connected Access capable (Subject to terms. See onstar.com or dealer for details.)
- Instrument cluster, 6-gauge cluster featuring speedometer, fuel level, engine temperature, tachometer, voltage and oil pressure
- Mirror, inside rearview, manual tilt- Remote vehicle starter system
- Seat adjuster, passenger 4-way manual
- Seat, Cloth Rear with Storage Package, 60/40 folding bench for Crew Cab models, includes seatback storage on left and right side, center fold out armrest with 2 cupholders, (includes child seat top tether anchor)
- Steering column, lock control, electrical- Steering wheel, leather-wrapped
- Theft-deterrent system, unauthorized entry
- USB ports, 2 (first row) located on instrument panel
- USB ports, dual, charge-only (2nd row)

Exterior

- Headlamps, LED reflector with incandescent turn signals and LED signature Daytime Running Lamps
- Mirrors, outside heated power-adjustable

Option Packages

Factory Installed Packages

ENGINE, 5.3L ECOTEC3 V8 (355 hp [265 kW] @ 5600 rpm, 383 lb-ft of torque [518 Nm] @ 4100 rpm); featuring available Dynamic Fuel Management that enables the engine to operate in 17 different patterns between 2 and 8 cylinders, depending on demand, to optimize power delivery and efficiency	\$1,395
--	----------------

SUMMIT WHITE

STANDARD PAINT

ELEVATION PREFERRED EQUIPMENT GROUP
includes standard equipment

AUDIO SYSTEM, GMC INFOTAINMENT SYSTEM WITH 8" DIAGONAL COLOR TOUCH-SCREEN, AM/FM STEREO
with seek-and-scan and digital clock, includes Bluetooth streaming audio for music and select phones; featuring wired Android Auto and Apple CarPlay capability for compatible phones

JET BLACK, CLOTH SEAT TRIM

Option Packages Total	\$1,395
------------------------------	----------------

- Tire, spare 255/80H17/SL all-season, blackwall (Included and only available with 20" or 22" wheels and tires.)
- Tires, 275/60R20 all-season, blackwall
- Wheels, 20" x 9" (50.8 cm x 22.9 cm) Black gloss painted aluminum
- Bumper, front, body-color lower (Front bumper color will be high gloss black.)
- Bumper, rear body-color with corner steps- CornerStep, rear bumper
- Door handles, body-color- Fog lamps, LED- Glass, deep-tinted
- Grille (Body-color surround with high gloss Black mesh and inserts.)
- LED Cargo Area Lighting located in cargo bed activated with switch on center switch bank or key fob
- Lamps, cargo area, cab mounted integrated with center high mount stop lamp, with switch in bank on left side of steering wheel
- Tailgate and bed rail protection caps, top
- Tailgate, GMC MultiPro Tailgate with six functional load/access features
- Tailgate, gate function manual with EZ Lift includes power lock and release, includes hitch area light
- Taillamps, LED tail and stop light with incandescent reverse light
- Tire carrier lock keyed cylinder lock that utilizes same key as ignition and door
- Wheel, 17" x 8" (43.2 cm x 20.3 cm) full-size, steel spare - Wheelhouse liners, rear

Safety

- Air conditioning, dual-zone automatic climate control (Models built before 9-6-2021 feature digital temperature displays on the Climate Control Knobs. Certain vehicles built on or after 9-6-2021 will include (00D) Not Equipped with Climate Control Knob Digital Temperature Display, which removes the digital temperatures displayed on the Climate Control Knobs. See dealer for details.)
- Defogger, rear-window electric- Door locks, power
- Floor mats, rubberized-vinyl front (Deleted when (RIA) All-weather floor liner, LPO is ordered.)
- Floor mats, rubberized-vinyl rear (Deleted when (RIA) All-weather floor liner, LPO is ordered.)
- Keyless Open and Start- Power outlet, front auxiliary, 12-volt
- Power outlet, rear auxiliary, 12-volt- Seat adjuster, driver 10-way power including lumbar
- Seating, heated driver and front outboard passenger
- Seats, front 40/20/40 split-bench with covered armrest storage and under-seat storage (lockable)
- Steering column, manual Tilt-Wheel and telescoping- Steering wheel, heated
- Window, power front, passenger express down
- Windows, power front, drivers express up/down- Windows, power rear, express down
- Air vents, rear
- Assist handles front A-pillar mounted for driver and passenger, rear B-pillar mounted
- Brake lining wear indicator- Compass, located in instrument cluster
- Cruise control, steering wheel-mounted
- Driver Information Center, 4.2" diagonal color display includes driver personalization
- Exterior Temperature Display, located in radio display
- Floor covering, color-keyed carpeting
- GMC Connected Access capable (Subject to terms. See onstar.com or dealer for details.)
- Instrument cluster, 6-gauge cluster featuring speedometer, fuel level, engine temperature, tachometer, voltage and oil pressure
- Mirror, inside rearview, manual tilt- Remote vehicle starter system
- Seat adjuster, passenger 4-way manual
- Seat, Cloth Rear with Storage Package, 60/40 folding bench for Crew Cab models, includes seatback storage on left and right side, center fold out armrest with 2 cupholders, (includes child seat top tether anchor)
- Steering column, lock control, electrical- Steering wheel, leather-wrapped
- Theft-deterrent system, unauthorized entry
- USB ports, 2 (first row) located on instrument panel
- USB ports, dual, charge-only (2nd row)

Mechanical

- Auto-locking rear differential
- Engine, 2.7L Turbo (310 hp [231 kW] @ 5600 rpm, 348 lb-ft of torque [471 Nm] @ 1500 rpm) (Includes (KW5) 220-amp alternator and (MQE) 8-speed automatic transmission. Not available with (X31) X31 Off-Road Package or (NHT) Max Trailering Package.)
- Transmission, 8-speed automatic, electronically controlled with overdrive and tow/haul mode. Includes Cruise Grade Braking and Powertrain Grade Braking (Standard on models equipped with (L84) 5.3L EcoTec3 V8 engine or (L3B) 2.7L Turbo engine. Not available with (LM2) Duramax 3.0L Turbo-Diesel I6 engine.)
- Alternator, 220 amps (Included and only available with (L3B) 2.7L Turbo engine, (LM2) Duramax 3.0L Turbo-Diesel I6 engine or (NHT) Max Trailering Package.)
- Automatic Stop/Start
- Battery, heavy-duty 730 cold-cranking amps/80 Amp-hr, maintenance-free with rundown protection and retained accessory power (Included and only available with (L84) 5.3L EcoTec3 V8 engine, (L3B) 2.7L Turbo engine and (L87) 6.2L EcoTec3 V8 engine.)
- Brakes, 4-wheel antilock, 4-wheel disc with DURALIFE rotors- Capless Fuel Fill

- Cargo tie downs (12), fixed, rated at 500 lbs per corner
- Exhaust, aluminized stainless-steel muffler and tailpipe- Exhaust, single outlet
- Four wheel drive- Frame, fully-boxed, hydroformed front section
- GVWR, 7000 lbs. (3175 kg) (Requires Crew Cab or Double Cab 4WD model and (L3B) 2.7L Turbo engine. Requires Crew Cab 2WD model and (LM2) Duramax 3.0L Turbo-Diesel I6 engine. Requires Double Cab 4WD model with (L84) 5.3L EcoTec3 V8 engine without (NHT) Max Trailing Package.)
- Pickup bed
- Rear axle, 3.42 ratio (Included and only available with (L3B) 2.7L Turbo engine or (NHT) Max Trailing Package.)
- Recovery hooks, front, frame-mounted, Black
- Steering, Electric Power Steering (EPS) assist, rack-and-pinion
- Transfer case, single speed, electronic Autotrac with push button control (4WD models only)

Auto Depot of Calexico

Auto Depot of Calexico

View this car on our website at autodepotcalexico.com/7166808

Website: autodepotcalexico.com

Phone: 760-357-0043

Map: [747 Imperial Ave, Calexico, CA 92231](https://www.google.com/maps)

