

**paniaguaautos.com**  
**(706)529-1919**



## 2007 Volkswagen Jetta 2.5

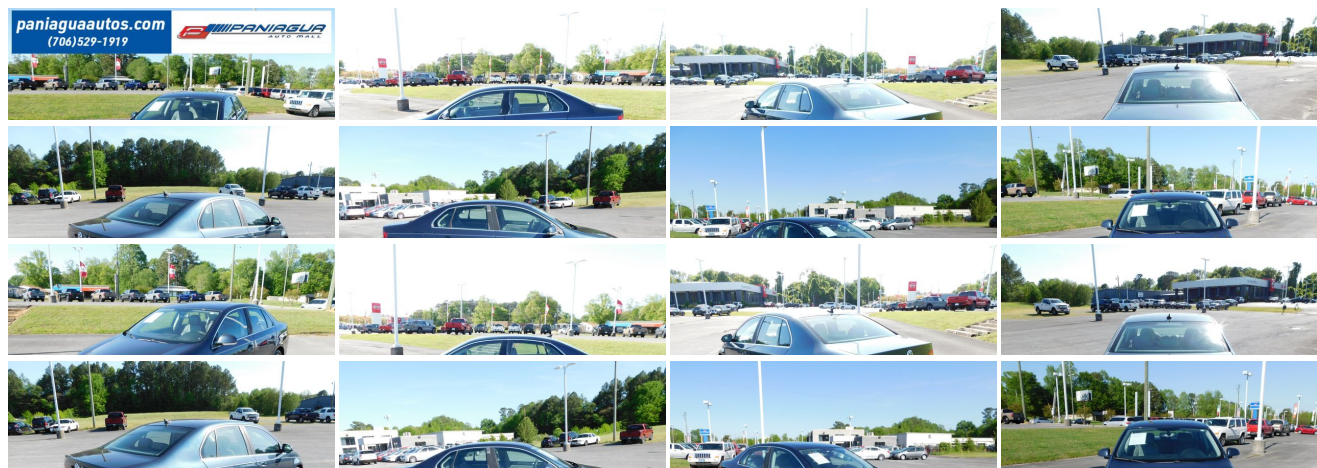
**Our Price \$4,900**

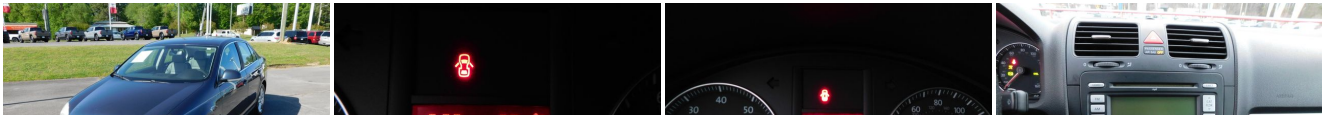
View this vehicle on our website at [paniaguaautos.com](http://paniaguaautos.com)



706-529-1919 & 423-472-4045  
1776 E. Walnut Ave., Dalton, GA 30721

Photos  
Details  
Contact





## Specifications:

<b>Year:</b>	2007
<b>VIN:</b>	<a href="#">3VWSF71KX7M138505</a>
<b>Make:</b>	Volkswagen
<b>Stock:</b>	9504
<b>Model/Trim:</b>	Jetta 2.5
<b>Condition:</b>	Pre-Owned
<b>Body:</b>	Sedan
<b>Exterior:</b>	Blue
<b>Engine:</b>	2.5L DOHC SMPI 20-valve I5 engine
<b>Interior:</b>	Gray Vinyl
<b>Transmission:</b>	AUTOMATIC
<b>Mileage:</b>	128,068
<b>Drivetrain:</b>	Front Wheel Drive
<b>Economy:</b>	City 22 / Highway 30

## Vehicle Description

2007 VOLKSWAGEN JETTA 2.5L 5 CYLINDER AUTOMATIC HURRY IN TODAY AND CHECK OUT OUR MOST RECENT INVENTORY WE HAVE THE BEST SELECTION OF USED VEHICLES IN TOWN

## Installed Options

### Interior

- 60/40 split folding rear seat w/(3) height-adjustable headrests
- 8-way manual front velour bucket seats w/manual lumbar
- AM/FM stereo w/CD/MP3 player-inc: (8) speakers, auxiliary input jack
- Air conditioning w/pollen filter- Console pwr outlet
- Direct tire pressure monitoring system- Front & rear floor mats
- Fully lined carpeted luggage compartment-inc: pwr outlet, folding pkg hook, removable storage divider, light
- Pwr windows-inc: driver-side 1-touch up/down feature, pinch protection
- Remote central pwr locking system-inc: automatic door locks, key-operated window open/close feature, selective unlocking
- Remote keyless entry w/(2) integrated key transmitters - (2) front cup holders
- Audible/visible anti-theft vehicle alarm system- Chrome door handles- Cruise control
- Driver/front passenger sunvisors w/sliding feature, illuminated vanity mirrors w/covers
- Folding front center armrest w/storage
- Front dome light w/time delay, (2) reading lights, front footwell lighting
- Front door storage pockets- Front seatback storage pockets
- Immobilizer theft-deterrent system- Lockable glove box- Outside temp gauge
- Rear heating & air conditioning ducts - Rear window defroster
- Remote trunk/fuel filler door releases- Roof mounted black whip antenna
- Tilt/telescoping 3-spoke steering wheel

### Exterior

- Body-color pwr heated mirrors w/integrated side blinkers- Daytime running lights
- 2-speed variable intermittent windshield wipers
- Body-color bumpers w/matching front & rear valance- Body-color door handles
- Chrome front grille- Tinted green glass

### Safety

- 60/40 split folding rear seat w/(3) height-adjustable headrests
- 8-way manual front velour bucket seats w/manual lumbar
- AM/FM stereo w/CD/MP3 player-inc: (8) speakers, auxiliary input jack
- Air conditioning w/pollen filter- Console pwr outlet
- Direct tire pressure monitoring system- Front & rear floor mats
- Fully lined carpeted luggage compartment-inc: pwr outlet, folding pkg hook, removable storage divider, light
- Pwr windows-inc: driver-side 1-touch up/down feature, pinch protection
- Remote central pwr locking system-inc: automatic door locks, key-operated window open/close feature, selective unlocking
- Remote keyless entry w/(2) integrated key transmitters - (2) front cup holders
- Audible/visible anti-theft vehicle alarm system- Chrome door handles- Cruise control
- Driver/front passenger sunvisors w/sliding feature, illuminated vanity mirrors w/covers
- Folding front center armrest w/storage
- Front dome light w/time delay, (2) reading lights, front footwell lighting
- Front door storage pockets- Front seatback storage pockets
- Immobilizer theft-deterrent system- Lockable glove box- Outside temp gauge
- Rear heating & air conditioning ducts - Rear window defroster
- Remote trunk/fuel filler door releases- Roof mounted black whip antenna
- Tilt/telescoping 3-spoke steering wheel

### Mechanical

- 16" x 6.5" steel wheels w/full wheel covers - 4-wheel anti-lock braking system (ABS)
- Electronic differential lock- Electronic stabilization program w/anti-slip regulation (ASR)
- P205/55HR16 all-season tires- 2.5L DOHC SMPI 20-valve I5 engine
- 6-speed automatic transmission w/Tiptronic & sport mode- Dual exhaust pipes
- Electromechanical variable assist pwr rack & pinion steering
- Electronic brake pressure distribution- Engine braking assist- Front wheel drive
- Hydraulic brake assistant
- Independent MacPherson strut front suspension w/stabilizer bar
- Independent multi-link rear suspension w/stabilizer bar
- P195/65HR15 all-season spare tire/full-size steel spare wheel
- Pwr front vented, rear solid disc brakes

Paniagua Auto Mall

Paniagua Auto Mall

View this car on our website at [paniaguaautos.com/7166806](https://paniaguaautos.com/7166806)

Website: [paniaguaautos.com](https://paniaguaautos.com)

Phone: [706-529-1919](tel:706-529-1919) & [423-472-4045](tel:423-472-4045)

Map: [1776 E. Walnut Ave](#) , Dalton, GA 30721

