

2022 GMC Sierra 2500HD Denali

View this car on our website at asayauto.com/7166496/ebrochure

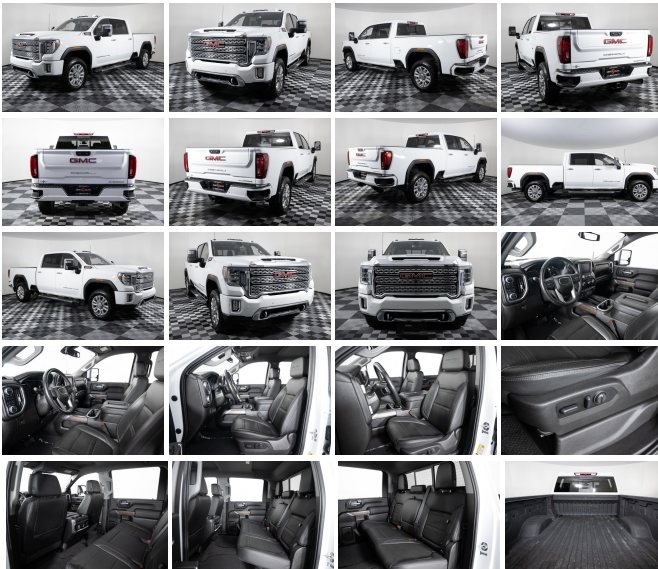


Our Price **\$75,495**

Specifications:

Year:	2022
VIN:	1GT19REY4NF200963
Make:	GMC
Stock:	P6699
Model/Trim:	Sierra 2500HD Denali
Condition:	Pre-Owned
Body:	Pickup Truck
Exterior:	White Frost Tricoat
Engine:	ENGINE, DURAMAX 6.6L TURBO-DIESEL V8, B20-DIESEL COMPATIBLE
Interior:	Jet Black Leather
Mileage:	12,025
Drivetrain:	4 Wheel Drive

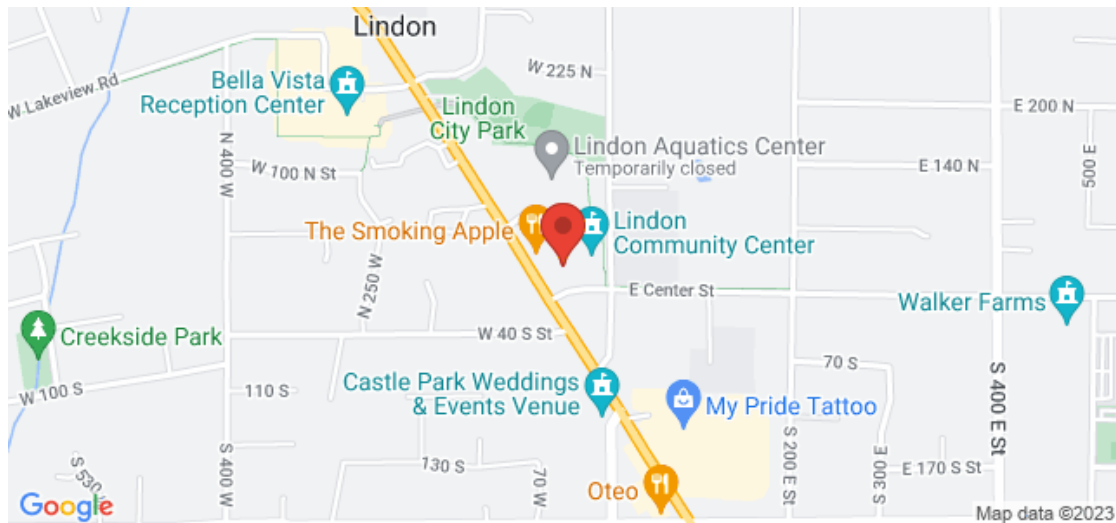
** CLEAN TITLE * CLEAN CARFAX * 2 PREVIOUS OWNERS *
FRONT HEATED SEATS * HEATED STEERING WHEEL * LEATHER
SEATS * LOW MILEAGE AND CLEAN INTERIOR ***We will price
match any equally equipped vehicle within 300 miles of our dealership**
Credit Union and bank financing available * We take trades and can
arrange buyer financing ** * Call or text us 24 hours at 385-323-8407
with any questions!



2022 GMC Sierra 2500HD Denali

Asay Auto Sales - 801-443-7779 - View this car on our website at asayauto.com/7166496/ebrochure

Our Location :



2022 GMC Sierra 2500HD Denali

Asay Auto Sales - 801-443-7779 - View this car on our website at asayauto.com/7166496/ebrochure

Installed Options

Interior

- Seats, front bucket with center console - Seat trim, Forge perforated leather-appointed
- Seat adjuster, driver 10-way power including lumbar
- Seat adjuster, passenger 10-way power including lumbar
- Seating, heated driver and front outboard passenger
- Seats, ventilated driver and front passenger
- Driver memory recalls driver "presets" for power driver seat and outside mirrors
- Seat, Up-level Rear with Storage Package, 60/40 folding bench for Crew Cab models, includes full-length bench seat, seatback storage on left and right side, center fold out armrest with 2 cupholders, full cab width under-seat storage, (includes child seat top tether anchor) (Rear seat features leather seating surfaces.)
- Center Console, floor-mounted with cup holders, cell phone storage, power cord management, hanging file folder capability
- Floor covering, color-keyed carpeting
- Floor mats, carpeted front (Unique premium carpet. Deleted when LPO floor liners are ordered or (BKF) Premium Floor Liners are ordered.)
- Floor mats, carpeted rear (Unique premium carpet. Deleted when LPO floor liners are ordered or (BKF) Premium Floor Liners are ordered.)
- Steering wheel, leather-wrapped- Steering wheel, heated- Steering wheel audio controls
- Steering column, manual Tilt-Wheel and telescoping
- Steering column, lock control, electrical
- Driver Information Center, enhanced, 8" diagonal multicolor digital display includes analog speedometer and tachometer gauges
- Exterior Temperature Display, located in radio display
- Compass, located in instrument cluster- Rear Seat Reminder
- Windows, power front, drivers express up/down
- Window, power front, passenger express up/down- Windows, power rear, express down
- Window, power, rear sliding with rear defogger- Door locks, power
- Keyless Open and Start- Remote vehicle starter system- Universal Home Remote
- Cruise control, steering wheel-mounted- Theft-deterrent system, unauthorized entry
- Wireless Charging

- Power outlet, instrument panel, 120-volt (400 watts shared with (KC9) bed mounted power outlet)
- USB ports, 2 (first row) located on instrument panel
- USB Ports (Inside Console with bucket seats), 2 also includes 1 SD card reader and auxiliary jack
- Power outlet, front auxiliary, 12-volt- Power outlet, rear auxiliary, 12-volt
- USB ports, dual, charge-only (2nd row)
- Power outlet, bed mounted, 120-volt (400 watts shared with (K14) instrument panel mounted power outlet)
- Air conditioning, dual-zone automatic climate control- Air vents, rear
- Defogger, rear-window electric- Mirror, inside rearview auto-dimming
- Assist handles front A-pillar mounted for driver and passenger, rear B-pillar mounted
- GMC Connected Access capable (Subject to terms. See onstar.com or dealer for details)

Exterior

- Wheels, 20" (50.8 cm) multi-dimensional Polished aluminum
- Tires, LT275/65R20 all-terrain, blackwall- Tire, spare LT275/70R18 all-terrain, blackwall
- Tire carrier lock keyed cylinder lock that utilizes same key as ignition and door
- Bumper, front, body-color lower- Bumper, rear body-color with bumper CornerSteps
- CornerStep, rear bumper
- Assist steps, chromed tubular, 6" rectangular cab length (factory installed) (Not available with (JSE) Denali Black Diamond Edition or (BRS) power-retractable assist steps with LED perimeter lighting.)
- Bed Liner, Spray-on, Pickup bedliner with GMC logo (does not include spray-on liner on tailgate due to Black composite inner panel) (Denali logo replaces GMC logo. Not available with any Ship Thru EXCEPT (VSH), (VTV), (TCH) or (TCE). (CGN) Bed liner as standard equipment is deleted if (R8R) Spray-on bedliner delete is desired.)
- Bed Step, Black integrated on forward portion of bed on driver and passenger side
- Cargo tie downs (12), fixed rated at 500 lbs per corner
- Wheelhouse liners, rear (Certain vehicles built prior to 3-21-2022 and after 4-7-2022 will include rear wheelhouse liners. Certain vehicles built on 3-21-2022 thru 4-7-2022 will be forced to include (RFZ) Not Equipped with Rear Wheelhouse liners, which removes Rear Wheelhouse liners. See dealer for details or the window label for the features on a specific vehicle.)
- Moldings, beltline, stainless steel
- Grille (Signature Denali grille with high gloss Black mesh and Chrome inserts.)
- Headlamps, LED reflector (high intensity) with LED turn signals and LED signature Daytime Running Lamps
- IntelliBeam, automatic high beam on/off - Fog lamps, LED
- Lamps, cargo area cab mounted integrated with center high mount stop lamp, with switch in bank on left side of steering wheel
- LED Cargo Area Lighting located in cargo bed activated with switch on center switch bank or key fob
- Taillamps, LED signature taillight with LED stop and reverse light
- Lamps, Smoked Amber LED roof marker, (LED) (Not available with (YF5) California state emissions requirements.)
- Mirrors, outside power-adjustable vertical trailing with heated and auto-dimming upper glass, (driver and passenger) lower convex mirrors, turn signal indicators, puddle lamps, perimeter lighting, auxiliary lighting, power folding/extending (extends 3.31" [84.25mm])
- Mirror caps, chrome- Glass, deep-tinted- Door handles, chrome
- Tailgate, GMC MultiPro Tailgate with six functional load/access features NOTE: Auto release can be disabled if ball hitch is installed. See Owner's manual for details
- Tailgate, gate function manual with EZ Lift includes power lock and release, includes hitch area light
- Tailgate and bed rail protection caps, top
- LPO, Polished exhaust tip (dealer-installed) (Requires (L8T) 6.6L V8 gas engine. Not included with (L5P) Duramax 6.6L Turbo-Diesel V8 engine.)

Safety

- Seats, front bucket with center console - Seat trim, Forge perforated leather-appointed
- Seat adjuster, driver 10-way power including lumbar
- Seat adjuster, passenger 10-way power including lumbar
- Seating, heated driver and front outboard passenger
- Seats, ventilated driver and front passenger
- Driver memory recalls driver "presets" for power driver seat and outside mirrors
- Seat, Up-level Rear with Storage Package, 60/40 folding bench for Crew Cab models, includes full-length bench seat, seatback storage on left and right side, center fold out armrest with 2 cupholders, full cab width under-seat storage, (includes child seat top tether anchor) (Rear seat features leather seating surfaces.)
- Center Console, floor-mounted with cup holders, cell phone storage, power cord management, hanging file folder capability
- Floor covering, color-keyed carpeting
- Floor mats, carpeted front (Unique premium carpet. Deleted when LPO floor liners are ordered or (BKF) Premium Floor Liners are ordered.)
- Floor mats, carpeted rear (Unique premium carpet. Deleted when LPO floor liners are ordered or (BKF) Premium Floor Liners are ordered.)

- Steering wheel, leather-wrapped- Steering wheel, heated- Steering wheel audio controls
- Steering column, manual Tilt-Wheel and telescoping
- Steering column, lock control, electrical
- Driver Information Center, enhanced, 8" diagonal multicolor digital display includes analog speedometer and tachometer gauges
- Exterior Temperature Display, located in radio display
- Compass, located in instrument cluster- Rear Seat Reminder
- Windows, power front, drivers express up/down
- Window, power front, passenger express up/down- Windows, power rear, express down
- Window, power, rear sliding with rear defogger- Door locks, power
- Keyless Open and Start- Remote vehicle starter system- Universal Home Remote
- Cruise control, steering wheel-mounted- Theft-deterrent system, unauthorized entry
- Wireless Charging
- Power outlet, instrument panel, 120-volt (400 watts shared with (KC9) bed mounted power outlet)
- USB ports, 2 (first row) located on instrument panel
- USB Ports (Inside Console with bucket seats), 2 also includes 1 SD card reader and auxiliary jack
- Power outlet, front auxiliary, 12-volt- Power outlet, rear auxiliary, 12-volt
- USB ports, dual, charge-only (2nd row)
- Power outlet, bed mounted, 120-volt (400 watts shared with (K14) instrument panel mounted power outlet)
- Air conditioning, dual-zone automatic climate control- Air vents, rear
- Defogger, rear-window electric- Mirror, inside rearview auto-dimming
- Assist handles front A-pillar mounted for driver and passenger, rear B-pillar mounted
- GMC Connected Access capable (Subject to terms. See onstar.com or dealer for details)

Mechanical

- Engine, 6.6L V8 with Direct Injection and Variable Valve Timing, gasoline, (401 hp [299 kW] @ 5200 rpm, 464 lb-ft of torque [629 N-m] @ 4000 rpm)
- Transmission, 6-speed automatic, heavy-duty
- Rear axle, 3.73 ratio (Requires (L8T) 6.6L V8 gas engine.)
- Pickup bed includes bed assist step
- GVWR, 10,650 lbs. (4831 kg) (Included and only available with TK20743 model and (L8T) 6.6L V8 gas engine with 18" or 20" wheels or TK20943 and (L8T) 6.6L V8 gas engine with 17" wheels.)
- Hill Descent Control
- Transfer case, two-speed active, electronic Autotrac with push button control
- Auto-locking rear differential- Four wheel drive- Cooling, external engine oil cooler
- Cooling, auxiliary external transmission oil cooler- Air filter, heavy-duty
- Air filtration monitoring
- Battery, heavy-duty 720 cold-cranking amps/80 Amp-hr, maintenance-free with rundown protection and retained accessory power (Included and only available with (L8T) 6.6L V8 gas engine.)
- Alternator, 170 amps (Requires (L8T) 6.6L V8 gas engine.)
- Trailer brake controller, integrated
- In-vehicle Trailing App, System includes checklist, trailer maintenance reminders, trailer security alerts, trailer mileage, tow/haul reminder, trailer electrical diagnostics and Trailer Tire Pressure Monitor System module (Includes trailer tire pressure monitoring alert when (PTT) trailer tire pressure monitor sensors are installed.)
- Recovery hooks, front, Chrome
- Skid Plates protect the oil pan, front axle and transfer case
- Frame, fully-boxed, hydroformed front section and a fully-boxed stamped rear section
- Suspension, Off-Road includes twin-tube shocks
- Steering, Digital Variable Steering Assist This system automatically adjusts steering based on speed, road conditions, and other inputs to reduce driver effort and fatigue
- Brakes, 4-wheel antilock, 4-wheel disc with DURALIFE rotors- Brake lining wear indicator
- Capless Fuel Fill (Requires (L8T) 6.6L gas V8 engine.)

Option Packages

Factory Installed Packages

ENGINE, DURAMAX 6.6L TURBO-DIESEL V8, B20-DIESEL COMPATIBLE
 (445 hp [332 kW] @ 2800 rpm, \$9,750
 910 lb-ft of torque [1220 Nm] @ 1600 rpm)

Option Packages Total
 \$9,750

