

2023 Jeep Gladiator Rubicon 4X4 DUPONT KEVLAR,LIFTED,BUMPERS,LED'S

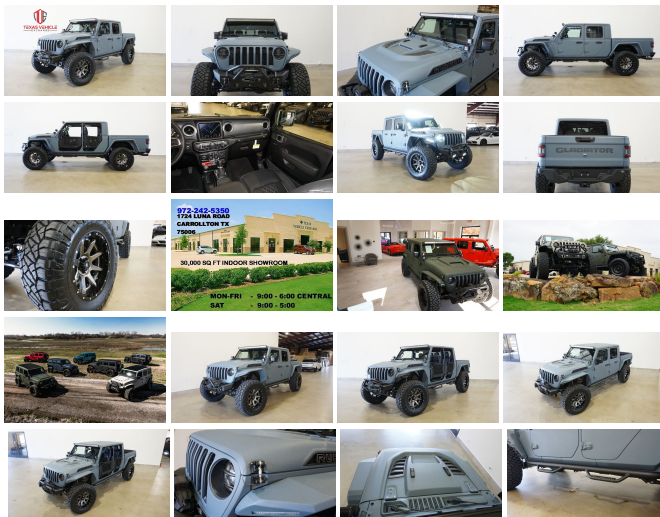
View this car on our website at tveauto.com/7166456/ebrochure



Our Price **\$99,900**

Specifications:

| | |
|----------------------|---|
| Year: | 2023 |
| VIN: | 1C6JTBG0PL505999 |
| Make: | Jeep |
| Stock: | 505999 |
| Model/Trim: | Gladiator Rubicon 4X4 DUPONT KEVLAR,LIFTED,BUMPERS,LED'S |
| Condition: | Pre-Owned |
| Body: | Pickup Truck |
| Exterior: | Blue |
| Engine: | ENGINE: 3.6L V6 24V VVT UPG I W/ESS |
| Interior: | Black Leather |
| Transmission: | TRANSMISSION: 8-SPEED AUTOMATIC (850RE) |
| Mileage: | 60 |
| Drivetrain: | 4 Wheel Drive |
| Economy: | City 16 / Highway 22 |



NATION WIDE FINANCING

SUBMIT CREDIT APP [WWW.TVEAUTO.COM](https://www.tveauto.com)

OR CALL 972-242-5350

"WINTER BLUE EDITION"

CUSTOM BUILT **KEVLAR** 2023 JEEP
GLADIATOR RUBICON 4X4 WITH 24R
PACKAGE

UPGRADES INCLUDE:

UPGRADES INCLUDE:

- * WINTER BLUE KEVLAR COATING WITH ANTHRACITE ACCENTS
- * CUSTOM ALEA BLACK LEATHER WITH SILVER STITCHING
- * FACTORY REMOTE START
- * REMOTE PROXIMITY KEYLESS ENTRY
- * COLD WEATHER GROUP
- * ACTIVE SAFETY GROUP
- * TRAILER TOW PACKAGE
- * FACTORY 8.4 INCH TOUCH SCREEN NAVIGATION WITH HD AM/FM/SIRIUS STEREO & ALPINE PREMIUM AUDIO SYSTEM
- * FACTORY BACK-UP CAMERA
- * U-CONNECT
- * 4 BODY ARMOR TRAIL DOORS & RECON MIRRORS
- * RUGGED RIDGE HD X STRIKER STUBBY FRONT BUMPER WITH LED FOGLIGHTS
- * FRONT D-RINGS & ISOLATORS (ANTHRACITE)
- * SMITTYBILT NEW GEN 3 "X20" 10,000 LB WATERPROOF AND WIRELESS CONTROL WINCH WITH SYNTHETIC ROPE
- * FACTOR 55 PROLINK (BLACK)
- * FACTORY LED HEADLIGHTS
- * RUGGED RIDGE BLACK HEADLIGHT GUARDS
- * NEW JT CUSTOM VENTED HOOD
- * DRAKE OFF ROAD HOOD LATCHES
- * ROAD ARMOR STEALTH JT FENDER FLARES
- * DV8 OFF ROAD FRONT & REAR INNER FENDERS
- * DURIGON EXPRESS 2.5" SUSPENSION

^ RUBICON EXPRESS 3.5" SUSPENSION
LIFT KIT WITH TERAFLX FALCON SHOCKS

* TERAFLX FALCON STABILIZER KIT

* MOPAR AUXILIARY SWITCH BANK KIT

* 50" LED LIGHT BAR AND 4 RIGID
INDUSTRIES DUALY D2 LED PILLAR
LIGHTS

* SMITTYBILT BLACK TUBULAR STEPS

* SPRAY IN BEDLINER

* ORACLE LED TAIL LIGHTS

* DV8 OFF ROAD REAR BUMPER WITH
REAR PARK DISTANCE SENSORS

* MAGNAFLOW CAT-BACK BLACK EXHAUST
SYSTEM

* ALL WEATHER FLOOR MATS

* TAZER JL PROGRAMMER WITH
SPEEDOMETER CALIBRATION

* 20" FUEL "RAMPAGE" 2-PIECE WHEELS

* BRAND NEW NITTO RIDGE GRAPPLER
38X13.50R/20 TIRES

**WE BUILD EVERY JEEP WITH PRIDE! DO
NOT HESITATE TO CALL US WITH THIS
JEEP BUILD. WE CAN MAKE CHANGES TO
THIS JEEP BUILD OR CUSTOM BUILD ANY
JEEP TO YOUR PREFERENCE. GIVE US A
CALL @ 972-242-5350 OR STOP BY FOR A
TEST DRIVE. 1724 LUNA RD IN
CARROLLTON - 2 MILES NORTH OF 635.**

Vehicle History Report : as Of 03/26/2023



Snapshot

2023 JEEP GLADIATOR RUBICON



No accidents or damage reported to CARFAX



Well maintained vehicle



CARFAX 1-Owner vehicle



Personal vehicle



Last owned in Texas



10 Last reported odometer reading



FREE CARFAX Report

See the full CARFAX Report for additional information

*carfax Snapshot is a reflection of available information on the date the report was pulled. carfax is constantly being updated with new information and is subject to change at any time.

Our Location :



2023 Jeep Gladiator Rubicon 4X4 DUPONT KEVLAR,LIFTED,BUMPERS,LED'S

Texas Vehicle Exchange - 972-242-5350 - View this car on our website at veauto.com/7166456/ebrochure

Installed Options

Interior

- 2 12V DC Power Outlets- 2 12V DC Power Outlets and 1 120V AC Power Outlet
- 2 Seatback Storage Pockets
- 4-Way Passenger Seat -inc: Manual Recline and Fore/Aft Movement
- 6-Way Driver Seat -inc: Manual Recline, Height Adjustment, Fore/Aft Movement and Manual Lumbar Support
- 60-40 Folding Split-Bench Front Facing Fold Forward Seatback Premium Cloth Rear Seat
- 97 MPH Vehicle Max Speed Calibration- Air Filtration- Analog Appearance- Compass
- Cruise Control w/Steering Wheel Controls- Day-Night Auto-Dimming Rearview Mirror
- Delayed Accessory Power
- Driver And Passenger Visor Vanity Mirrors w/Driver And Passenger Illumination
- Fade-To-Off Interior Lighting- Front And Rear Map Lights
- Front Center Armrest w/Storage
- Front Seats w/Cloth Back Material and Manual Driver Lumbar
- Full Carpet Floor Covering -inc: Carpet Front And Rear Floor Mats
- Full Floor Console w/Locking Storage, 2 12V DC Power Outlets and 1 120V AC Power Outlet
- Garage Door Transmitter
- Gauges -inc: Speedometer, Odometer, Voltmeter, Oil Pressure, Engine Coolant Temp,

- Tachometer, Inclinometer, Altimeter, Oil Temperature, Engine Hour Meter, Trip Odometer and Trip Computer
- HVAC -inc: Console Ducts- Illuminated Front Cupholder- Illuminated Rear Cupholder
- Instrument Panel Bin, Dashboard Storage, Driver / Passenger And Rear Door Bins
- Interior Trim -inc: Metal-Look Instrument Panel Insert, Metal-Look Door Panel Insert, Metal-Look Console Insert and Metal-Look Interior Accents
- Leatherette Steering Wheel- Locking Glove Box
- Manual Adjustable Front Head Restraints and Foldable Rear Head Restraints
- Manual Tilt/Telescoping Steering Column- Outside Temp Gauge- Perimeter Alarm
- Power 1st Row Windows w/Driver And Passenger 1-Touch Down
- Power Door Locks w/Autolock Feature- Power Rear Windows
- Premium Cloth Low-Back Bucket Seats- Proximity Key For Doors And Push Button Start
- Redundant Digital Speedometer
- Remote Keyless Entry w/Integrated Key Transmitter, Illuminated Entry and Panic Button
- Sentry Key Immobilizer- Smart Device Integration- Systems Monitor- Trip Computer
- Urethane Gear Shifter Material
- Voice Activated Dual Zone Front Automatic Air Conditioning

Exterior

- Auto On/Off Aero-Composite Halogen Daytime Running Headlamps w/Delay-Off
- Black Door Handles- Black Front Bumper w/2 Tow Hooks
- Black Power Heated Side Mirrors w/Manual Folding- Black Rear Bumper w/2 Tow Hooks
- Black Side Windows Trim- Black Wheel Well Trim and Black Fender Flares
- Body-Color Grille w/Colored Accents- Clearcoat Paint w/Badging- Deep Tinted Glass
- Front Fog Lamps- Full-Size Spare Tire Stored Underbody w/Crankdown
- Galvanized Steel/Aluminum Panels- Manual Convertible Top w/Fixed Roll-Over Protection
- Regular Box Style- Removable Rear Window- Steel Spare Wheel
- Tailgate Rear Cargo Access- Tailgate/Rear Door Lock Included w/Power Door Locks
- Tires: LT285/70R17C BSW A/T- Variable Intermittent Wipers
- Wheels: 17" x 7.5" Granite Crystal Aluminum

Safety

- 2 12V DC Power Outlets- 2 12V DC Power Outlets and 1 120V AC Power Outlet
- 2 Seatback Storage Pockets
- 4-Way Passenger Seat -inc: Manual Recline and Fore/Aft Movement
- 6-Way Driver Seat -inc: Manual Recline, Height Adjustment, Fore/Aft Movement and Manual Lumbar Support
- 60-40 Folding Split-Bench Front Facing Fold Forward Seatback Premium Cloth Rear Seat
- 97 MPH Vehicle Max Speed Calibration- Air Filtration- Analog Appearance- Compass
- Cruise Control w/Steering Wheel Controls- Day-Night Auto-Dimming Rearview Mirror
- Delayed Accessory Power
- Driver And Passenger Visor Vanity Mirrors w/Driver And Passenger Illumination
- Fade-To-Off Interior Lighting- Front And Rear Map Lights
- Front Center Armrest w/Storage
- Front Seats w/Cloth Back Material and Manual Driver Lumbar
- Full Carpet Floor Covering -inc: Carpet Front And Rear Floor Mats
- Full Floor Console w/Locking Storage, 2 12V DC Power Outlets and 1 120V AC Power Outlet
- Garage Door Transmitter
- Gauges -inc: Speedometer, Odometer, Voltmeter, Oil Pressure, Engine Coolant Temp, Tachometer, Inclinometer, Altimeter, Oil Temperature, Engine Hour Meter, Trip Odometer and Trip Computer
- HVAC -inc: Console Ducts- Illuminated Front Cupholder- Illuminated Rear Cupholder
- Instrument Panel Bin, Dashboard Storage, Driver / Passenger And Rear Door Bins
- Interior Trim -inc: Metal-Look Instrument Panel Insert, Metal-Look Door Panel Insert, Metal-Look Console Insert and Metal-Look Interior Accents
- Leatherette Steering Wheel- Locking Glove Box
- Manual Adjustable Front Head Restraints and Foldable Rear Head Restraints
- Manual Tilt/Telescoping Steering Column- Outside Temp Gauge- Perimeter Alarm
- Power 1st Row Windows w/Driver And Passenger 1-Touch Down
- Power Door Locks w/Autolock Feature- Power Rear Windows
- Premium Cloth Low-Back Bucket Seats- Proximity Key For Doors And Push Button Start
- Redundant Digital Speedometer
- Remote Keyless Entry w/Integrated Key Transmitter, Illuminated Entry and Panic Button
- Sentry Key Immobilizer- Smart Device Integration- Systems Monitor- Trip Computer
- Urethane Gear Shifter Material
- Voice Activated Dual Zone Front Automatic Air Conditioning

Mechanical

- 1200# Maximum Payload- 22 Gal. Fuel Tank- 220 Amp Alternator
- 4-Wheel Disc Brakes w/4-Wheel ABS, Front And Rear Vented Discs, Brake Assist and Hill

Hold Control

- 4.10 Rear Axle Ratio- 50 State Emissions
- 650CCA Maintenance-Free Battery w/Run Down Protection- 7 Skid Plates
- Auto Locking Hubs- Brake Actuated Limited Slip Differential
- Class II Towing Equipment -inc: Hitch and Trailer Sway Control
- Driver Selectable Rear Locking Differential- Electro-Hydraulic Power Assist Steering
- Engine Auto Stop-Start Feature- Engine Oil Cooler
- Engine: 3.6L V6 24V VVT UPG I w/ESS - Fox Premium Shock Absorbers
- Front Active w/Driver Control Anti-Roll Bar and Rear Anti-Roll Bar
- Front Differential Electronic Lock w/Axle Disconnect- GVWR: 6,250 lbs
- Leading Link Front Suspension w/Coil Springs- Manual Transfer Case
- Part-Time Four-Wheel Drive- Performance Suspension- Single Stainless Steel Exhaust
- Solid Axle Rear Suspension w/Coil Springs- Trailer Wiring Harness
- Transmission: 6-Speed Manual

Option Packages

Factory Installed Packages

ENGINE: 3.6L V6 24V VVT UPG I W/ESS

TRANSMISSION: 8-SPEED AUTOMATIC (850RE)

-inc: Transmission Skid Plate, Selec-Speed Control \$2,000

AUXILIARY SWITCH GROUP

-inc: 700 Amp Maintenance Free Battery, 240 Amp Alternator, Auxiliary Switches \$495

BLACK 3-PIECE HARD TOP

-inc: Freedom Panel Storage Bag, Rear Window Defroster, Rear Sliding Window \$1,895

COLD WEATHER GROUP

-inc: Heated Steering Wheel, Heated Front Seats, Leather Wrapped Steering Wheel \$1,345

SAFETY GROUP

-inc: ParkSense Rear Park Assist System, Blind Spot & Cross Path Detection \$1,395

TRAILER TOW PACKAGE

-inc: Trailer Hitch Zoom, Class IV Receiver Hitch, Heavy Duty Engine Cooling, 240 Amp Alternator \$895

QUICK ORDER PACKAGE 24R RUBICON

-inc: Engine: 3.6L V6 24V VVT UPG I w/ESS, Transmission: 8-Speed Automatic (850RE)

Option Packages Total

\$8,025

972-242-5350

1724 Luna Road

Carrollton, TX 75006

© 2023 AutoRevo - All rights reserved. - Powered by AutoRevo