

2007 Chevrolet Tahoe LTZ

View this car on our website at asayauto.com/7166238/ebrochure

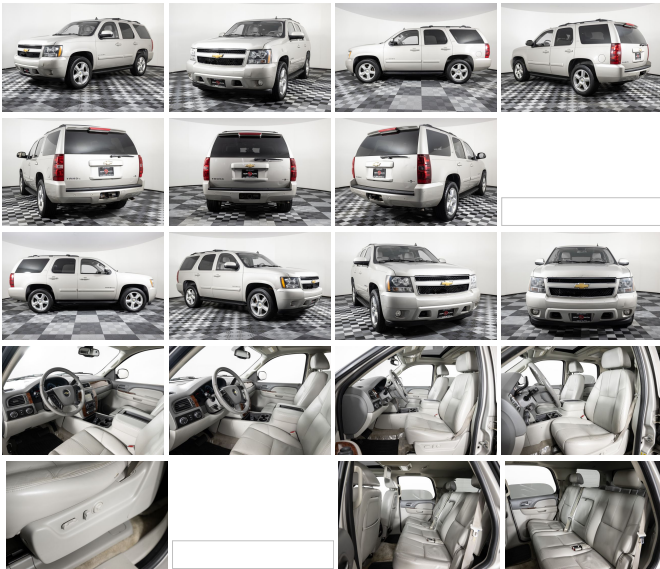


Our Price **\$8,495**

Specifications:

Year:	2007
VIN:	1GNFK13027J129259
Make:	Chevrolet
Stock:	P6564A_1A
Model/Trim:	Tahoe LTZ
Condition:	Pre-Owned
Body:	SUV
Exterior:	Summit White
Engine:	ENGINE, VORTEC 5.3L V8 SFI FLEX-FUEL WITH ACTIVE FUEL MANAGEMENT,
Interior:	Ebony Leather Interior Leather
Mileage:	206,220
Drivetrain:	4 Wheel Drive
Economy:	City 15 / Highway 20

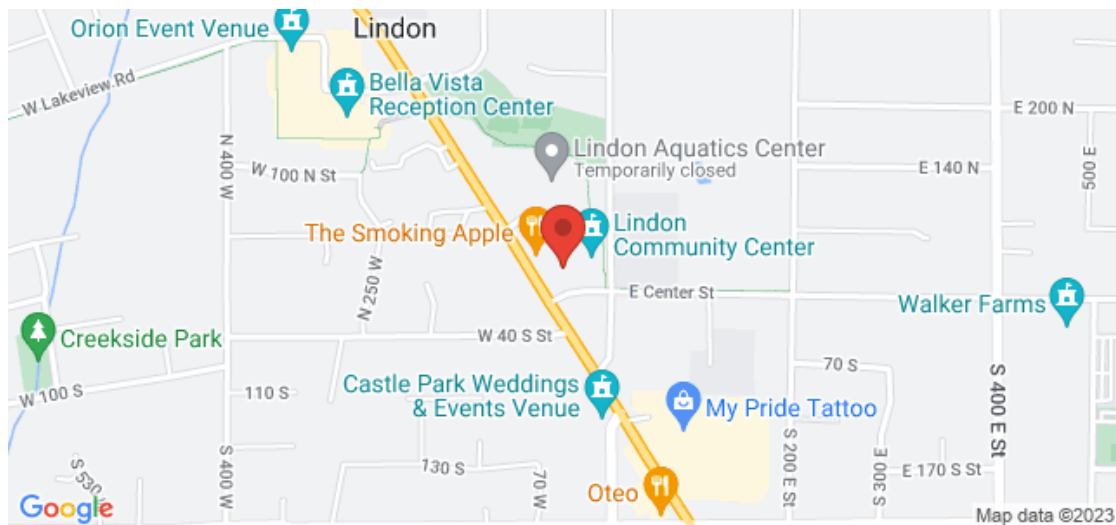
** CLEAN TITLE * CLEAN CARFAX * 49 SERVICE HISTORY RECORDS * 4WD * LEATHER SEATS * SUNROOF * JUST TRADED IN TO US, IN GREAT CONDITION! **We will price match any equally equipped vehicle within 300 miles of our dealership** **Credit Union and bank financing available** ** We take trades and can arrange buyer financing ** * Call or text us 24 hours at 385-323-8407 with any questions!



2007 Chevrolet Tahoe LTZ

Asay Auto Sales - 801-443-7779 - View this car on our website at asayauto.com/7166238/ebrochure

Our Location :



2007 Chevrolet Tahoe LTZ

Asay Auto Sales - 801-443-7779 - View this car on our website at asayauto.com/7166238/ebrochure

Installed Options

Interior

- Seats, front bucket with leather-appointed seating, 12-way power driver and front passenger seat adjusters, power lumbar control, heated seat cushion and seatbacks, 2-position driver memory, adjustable head restraints, storage pockets and floor console
- Seat adjuster, driver power- Seat adjuster, front passenger power
- Seats, second row bucket with leather-appointed seating, reclining
- Seats, heated second row
- Seat release, second row, power release only (Requires (AW2) 2-passenger, third row vinyl 50/50 split-bench seat or (AS3) 3-passenger, third row vinyl 50/50 split-bench seat.)
- Seats, third row 50/50 split-bench with vinyl, 3-passenger, removable, all-belts-to-seat
- Console, floor with storage area, cup holders and integrated second row audio controls (Includes woodgrain covered forward storage.)
- Floor covering, color-keyed carpeting
- Floor mats, color-keyed carpeted front and second row, removable
- Steering column, Tilt-Wheel, adjustable with brake/transmission shift interlock
- Steering wheel, leather-wrapped
- Steering wheel controls, mounted audio, Driver Information Center and cruise controls, includes Driver Information Center controls on instrument panel to right of steering wheel
- Instrumentation, analog with speedometer, odometer with trip odometer, fuel level, voltmeter, engine temperature, oil pressure and tachometer
- Warning tones, headlamp on, key-in-ignition, driver and right-front passenger safety belt unfasten and turn signal on
- Tire Pressure Monitoring System (does not apply to spare tire)
- Windows, power with driver Express-Down and lockout features
- Door locks, power programmable with lockout protection
- Remote vehicle starter system, includes Remote Keyless Entry
- Universal Home Remote, includes garage door opener, programmable
- Cruise control, electronic with set and resume speed
- Pedals, power-adjustable for accelerator and brake
- Rear Parking Assist, Ultrasonic with rearview LED display and audible warning
- OnStar, 1-year of Safe and Sound plan. Includes Automatic Notification of Air Bag

Deployment, Stolen Vehicle Location Assistance, Emergency Services, Roadside Assistance, Remote Door Unlock, OnStar Vehicle Diagnostics, Hands-Free Calling, AccidentAssist, and Remote Horn & Lights (Not available with order type FDR. OnStar services require vehicle electrical system (including battery), wireless service and GPS satellite signals to be available and operating for features to function properly. OnStar acts as a link to existing emergency service providers. OnStar Vehicle Diagnostics available on most 2004 MY and newer GM vehicles. Diagnostic capability varies by model. Visit onstar.com for system limitations and details.

- Theft-deterrent system, vehicle, PASS-Key III
- Heater, rear auxiliary with rear passenger heating ducts
- Air conditioning, dual-zone automatic climate control with individual climate settings for driver and right-front passenger
- Air conditioning, rear auxiliary- Defogger, rear-window electric
- Audio system, AM/FM stereo with MP3 compatible 6-disc in-dash CD changer, seek-and-scan, digital clock and auto-tone control
- Audio system feature, Bose premium 9-speaker system with subwoofer in center console
- Audio system controls, rear with 2 headphone jacks (headphones not included), power outlet and controls for volume, station selection and media
- Power outlets, 5 auxiliary, 12-volt, includes 2 on the instrument panel, 1 in the cargo area, 1 inside center console and 1 at back of console
- Mirror, inside rearview auto-dimming with 8-point compass and outside temperature display
- Headliner, cloth
- Visors, driver and front passenger illuminated vanity mirrors, padded with cloth trim, extends on rod
- Assist handles, front passenger and second row outboard
- Console, overhead mini with map lights (Includes controls for sunroof, power liftgate and power release second row seats when (CF5) power sunroof, (E61) power liftgate with liftglass and (ARS) second row power seat release is ordered.)
- Lighting, interior with dome light, driver- and passenger-side door switch with delayed entry feature, cargo lights, door handle or Remote Keyless Entry-activated illuminated entry and map lights in front and second seat positions
- LTZ Plus Sales Package

Exterior

- Luggage rack side rails, roof-mounted, Black- Fascia, front color-keyed
- Fascia, rear color-keyed- Grille insert, bright chrome- Moldings, color-keyed bodyside
- Assist steps, Black, mounted between front and rear wheels (Upgradeable to (BRS) power-retractable assist steps.
- Headlamps, dual halogen composite with automatic exterior lamp control and flash-to-pass feature
- Daytime Running Lamps, with automatic exterior lamp control- Fog lamps, front round
- Mirrors, outside heated power-adjustable, power-folding and driver-side auto-dimming, with integrated turn signal indicators, ground illumination and curb-tilt (Mirror caps are bright chrome.)
- Glass, Solar-Ray deep-tinted (all windows except light-tinted glass on windshield and driver- and front passenger-side glass)
- Wipers, front intermittent wet-arm with flat blade and pulse washers
- Wipers, front intermittent, RainSense- Windshield washer fluid system, heated
- Wiper, rear intermittent with washer- Door handles, chrome

Safety

- Seats, front bucket with leather-appointed seating, 12-way power driver and front passenger seat adjusters, power lumbar control, heated seat cushion and seatbacks, 2-position driver memory, adjustable head restraints, storage pockets and floor console
- Seat adjuster, driver power- Seat adjuster, front passenger power
- Seats, second row bucket with leather-appointed seating, reclining
- Seats, heated second row
- Seat release, second row, power release only (Requires (AW2) 2-passenger, third row vinyl 50/50 split-bench seat or (AS3) 3-passenger, third row vinyl 50/50 split-bench seat.)
- Seats, third row 50/50 split-bench with vinyl, 3-passenger, removable, all-belts-to-seat
- Console, floor with storage area, cup holders and integrated second row audio controls (Includes woodgrain covered forward storage.)
- Floor covering, color-keyed carpeting
- Floor mats, color-keyed carpeted front and second row, removable
- Steering column, Tilt-Wheel, adjustable with brake/transmission shift interlock
- Steering wheel, leather-wrapped
- Steering wheel controls, mounted audio, Driver Information Center and cruise controls, includes Driver Information Center controls on instrument panel to right of steering wheel
- Instrumentation, analog with speedometer, odometer with trip odometer, fuel level, voltmeter, engine temperature, oil pressure and tachometer
- Warning tones, headlamp on, key-in-ignition, driver and right-front passenger safety belt unfasten and turn signal on
- Tire Pressure Monitoring System (does not apply to spare tire)
- Windows, power with driver Express-Down and lockout features
- Door locks, power programmable with lockout protection
- Remote vehicle starter system, includes Remote Keyless Entry
- Universal Home Remote, includes garage door opener, programmable

- Cruise control, electronic with set and resume speed
- Pedals, power-adjustable for accelerator and brake
- Rear Parking Assist, Ultrasonic with rearview LED display and audible warning
- OnStar, 1-year of Safe and Sound plan. Includes Automatic Notification of Air Bag Deployment, Stolen Vehicle Location Assistance, Emergency Services, Roadside Assistance, Remote Door Unlock, OnStar Vehicle Diagnostics, Hands-Free Calling, AccidentAssist, and Remote Horn & Lights (Not available with order type FDR. OnStar services require vehicle electrical system (including battery), wireless service and GPS satellite signals to be available and operating for features to function properly. OnStar acts as a link to existing emergency service providers. OnStar Vehicle Diagnostics available on most 2004 MY and newer GM vehicles. Diagnostic capability varies by model. Visit onstar.com for system limitations and details.
- Theft-deterrent system, vehicle, PASS-Key III
- Heater, rear auxiliary with rear passenger heating ducts
- Air conditioning, dual-zone automatic climate control with individual climate settings for driver and right-front passenger
- Air conditioning, rear auxiliary- Defogger, rear-window electric
- Audio system, AM/FM stereo with MP3 compatible 6-disc in-dash CD changer, seek-and-scan, digital clock and auto-tone control
- Audio system feature, Bose premium 9-speaker system with subwoofer in center console
- Audio system controls, rear with 2 headphone jacks (headphones not included), power outlet and controls for volume, station selection and media
- Power outlets, 5 auxiliary, 12-volt, includes 2 on the instrument panel, 1 in the cargo area, 1 inside center console and 1 at back of console
- Mirror, inside rearview auto-dimming with 8-point compass and outside temperature display
- Headliner, cloth
- Visors, driver and front passenger illuminated vanity mirrors, padded with cloth trim, extends on rod
- Assist handles, front passenger and second row outboard
- Console, overhead mini with map lights (Includes controls for sunroof, power liftgate and power release second row seats when (CF5) power sunroof, (E61) power liftgate with liftglass and (ARS) second row power seat release is ordered.)
- Lighting, interior with dome light, driver- and passenger-side door switch with delayed entry feature, cargo lights, door handle or Remote Keyless Entry-activated illuminated entry and map lights in front and second seat positions
- LTZ Plus Sales Package

Mechanical

- Engine, Vortec 5.3L V8 SFI Flex-Fuel with Active Fuel Management, capable of running on unleaded or up to 85% ethanol (320 hp [238.6 kW] @ 5200 rpm, 340 lb-ft of torque [459.0 N-m] @ 4200 rpm), iron block (Standard on 4x4 models. Available on 2WD models.)
- Transmission, 4-speed automatic, electronically controlled with overdrive and tow/haul mode
- Transfer case, electronic Autotrac with rotary controls (Requires 4x4 models.)
- Differential, heavy-duty locking rear
- Rear axle, 3.73 ratio (Standard on 4x4 models. Available on 2WD models.) - 4-wheel drive
- Battery, heavy-duty 600 cold-cranking amps, maintenance-free with rundown protection and retained accessory power
- Alternator, 160 amps
- Trailering equipment, heavy-duty, includes trailering hitch platform, 7-wire harness with independent fused trailering circuits mated to a 7-way sealed connector and (VR4) 2" trailering receiver
- Recovery hooks, front, frame-mounted (Requires 4x4 models.)
- GVWR, 7300 lbs. (3311 kg) (Standard on 4WD models.)
- Body, liftgate with liftglass, power rear door system with rear-window wiper/washer
- StabiliTrak, stability control system with Proactive Roll Avoidance
- Suspension Package, Autoride, bi-state variable shock dampening and rear air-assisted load-leveling, includes (G69) automatic air level control
- Suspension, front coil-over-shock with stabilizer bar
- Suspension, rear multi-link with coil springs
- Tires, P275/55R20 all-season, blackwall (Required with (RCS) 20" polished aluminum wheels.)
- Tire, spare P265/70R17
- Wheels, 4 - 20" x 8.5" (50.8 cm x 21.6 cm) polished aluminum (Requires (QSS) P275/55R20 all-season, blackwall tires.)
- Wheel, 17" (43.2 cm) full-size, steel spare
- Tire carrier, lockable outside spare, winch-type mounted under frame at rear
- Steering, power- Brakes, 4-wheel antilock, 4-wheel disc- Key, single, 2-sided

Option Packages

Factory Installed Packages

- ENGINE, VORTEC 5.3L V8 SFI FLEX-

FUEL WITH ACTIVE FUEL
MANAGEMENT,

capable of running on unleaded or
up to 85% ethanol (320 hp
[238.6 kW] @ 5200 rpm, 340
lb-ft of torque [459.0 N-m] @
4200 rpm), iron block

Asay Auto Sales

asayauto.com

801-443-7779

10 North State Street

LINDON, UT 84042

© 2023 AutoRevo - All rights reserved. - Powered by AutoRevo