

2004 GMC W5S042 W5500 DSL CRW 16' Box

View this car on our website at carbuffs.com/7165006/ebrochure



Our Price **\$25,950**

Specifications:

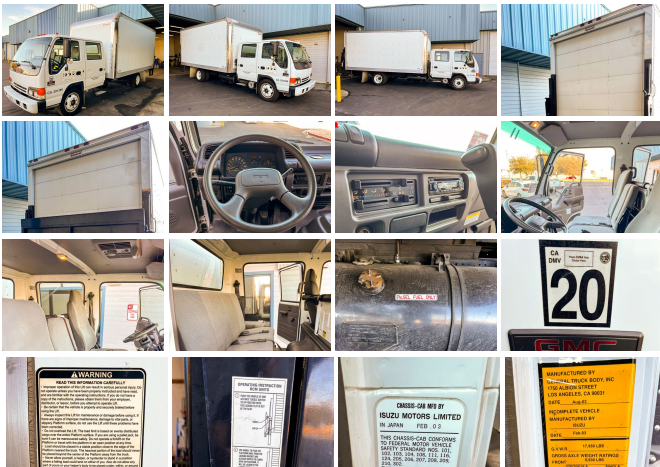
Year:	2004
VIN:	J8DE5J14047900231
Make:	GMC
Model/Trim:	W5S042 W5500 DSL CRW 16' Box
Condition:	Pre-Owned
Exterior:	White
Engine:	175HP @ 2700 RPM, 347 #/FT TORQUE @ 2000 RPM, 4.75L (290) DURAMAX 4800 4HE1-TC 4-CYL OHC, TURBOCHARGED, INTERCOOLED, DIRECT INJECTION DIESEL ENGINE
Interior:	Neutral Cloth
Transmission:	4-SPEED AISIN 450-43 LE AUTOMATIC TRANSMISSION W/OD
Mileage:	59,500
Drivetrain:	Rear Wheel Drive
Truck Type:	Van - Box, Cube

I am listing this for the original owner. It is located in Tracy, California.

Description from owner:

"Must be sold out of California as the state no longer considers it carb compliant due to it's age."

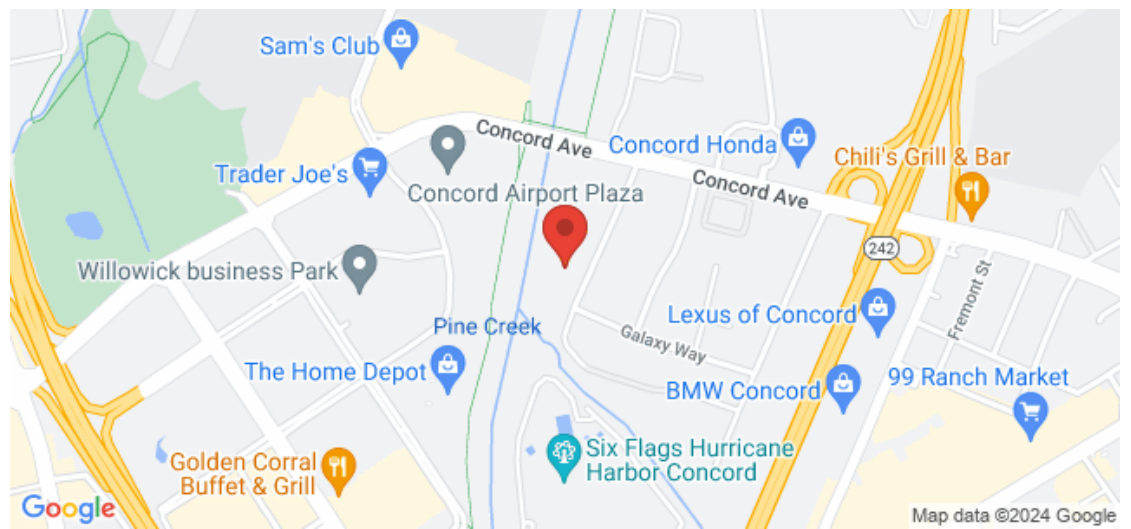
16 foot box with platform lift gate. 7 feet high in box. New tires, new batteries, and windshield. No dents. Has been stored indoors all its life. I am original owner, bought it brand new for Oakland truck center in 2004. It has seven seat belts, three in front, four on back. Eclipse AM/FM/CD stereo. 4.75L four cylinder turbo Diesel. No accidents. Only 59k miles. Clean California title in-hand."



2004 GMC W5S042 W5500 DSL CRW 16' Box

Carbuffs - (925) 671-2010 - View this car on our website at carbuffs.com/7165006/ebrochure

Our Location :



2004 GMC W5S042 W5500 DSL CRW 16' Box

Carbuffs - (925) 671-2010 - View this car on our website at carbuffs.com/7165006/ebrochure

Installed Options

Interior

- Jersey knit vinyl covered reclining highback driver seat w/2 single occupant fold down seats
- Dual cab mounted exterior mirrors
- Integral pwr steering w/tilt & telescoping steering column - Pwr windows/door locks
- Rear bench seat

Exterior

- 2-way roof ventilator- Steel low cab forward cab mounts - Tinted glass windows

Safety

- Jersey knit vinyl covered reclining highback driver seat w/2 single occupant fold down seats
- Dual cab mounted exterior mirrors
- Integral pwr steering w/tilt & telescoping steering column - Pwr windows/door locks
- Rear bench seat

Mechanical

- 225/70R19.5F 12-ply tubeless radial all-season rear tires
- Disc front/drum rear anti-lock hydraulic brakes w/load sensing valve
- 10" diameter dry paper single element Donaldson air cleaner
- 110 amp alternator w/integral regulator- 12980# rear GAWR
- 14550# semi-elliptical main/aux multi-leaf rear springs-inc: shock absorbers
- 14550# single speed rear axle w/oil lubricated rear wheel bearings
- 150.0" wheelbase-inc: 88.9" CA, 132.0" CE
- 175HP @ 2700 rpm, 347 #ft torque @ 2000 rpm, 4.75L (290) Duramax 4800 4HE1-TC 4-cyl OHC, turbocharged, intercooled, direct injection diesel engine
- 17950# GVWR rating- 19.5" x 6" 6-hole disc painted white front wheels
- 19.5" x 6" 6-hole disc painted white rear wheels
- 225/70R19.5F 12-ply tubeless radial all-season front tires
- 30 gallon fuel tank w/mechanical fuel pump & fuel water separator *Mounted between frame rail*
- 4-speed Aisin 450-43 LE automatic transmission w/OD
- 44,000 psi yield strength ladder type channel - section straight frame rail
- 5.86 rear axle ratio- 6830# "I"-beam front axle- 6830# front GAWR
- 8440# semi-elliptical tapered leaf front springs-inc: shock absorbers & stabilizer bar
- Aluminized steel single horizontal exhaust system *Left hand mounted inside frame rail*
- Butterfly valve exhaust brake- Dual Delco 12v maintenance free 750CCA batteries
- Engine shutdown-inc: warning alarm, high water temp, low water level, low oil pressure
- Rear wheel drive- Truck Application

Option Packages

Factory Installed Packages

175HP @ 2700 RPM, 347 #/FT TORQUE @ 2000 RPM, 4.75L (290) DURAMAX 4800 4HE1-TC 4-CYL OHC, TURBOCHARGED, INTERCOOLED, DIRECT INJECTION DIESEL ENGINE

4-SPEED AISIN 450-43 LE AUTOMATIC TRANSMISSION W/OD

AIR CONDITIONING

\$1,272

POWER WINDOWS & DOOR LOCKS

\$200

SOLID PAINT

Option Packages Total

\$1,472

Carbuffs

carbuffs.com

(925) 671-2010

2281-A Via De Mercados

Concord, CA 94520

© 2024 AutoRevo - All rights reserved. - Powered by AutoRevo