



2014 Ram 2500 Big Horn

Our Price \$25,900

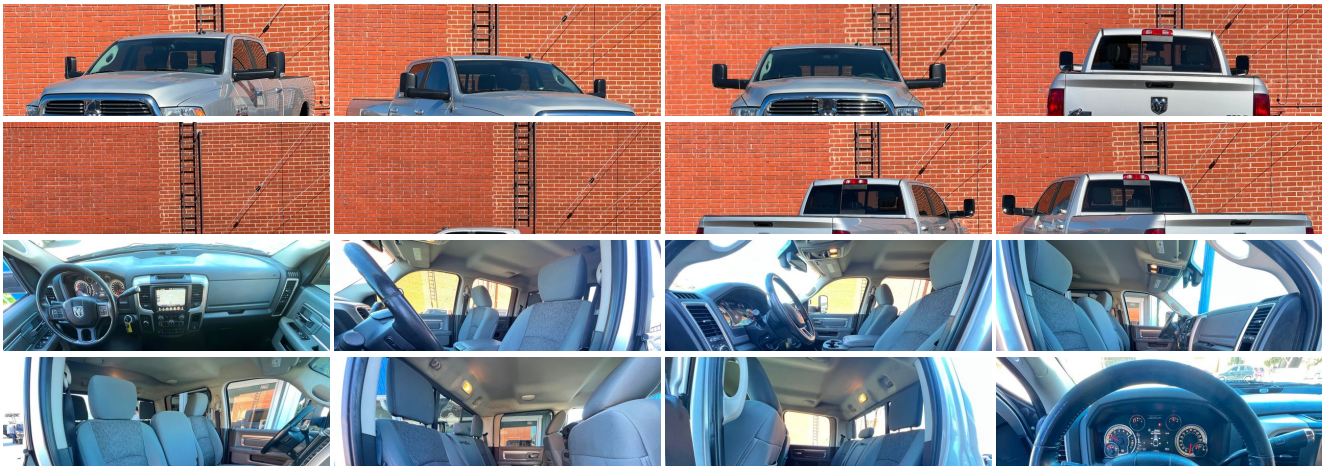
View this vehicle on our website at stellarautoinc.com

STELLAR
- AUTO INC -

(818) 809-8676

2220 N Hollywood Way , Burbank, CA 91505

Photos
Details
Contact





Specifications:

Year:	2014
VIN:	3C6UR5JL1EG152599
Make:	Ram
Stock:	AARX14RAM2500_2keys
Model/Trim:	2500 Big Horn
Condition:	Pre-Owned
Body:	Pickup Truck
Exterior:	Bright Silver Metallic Clearcoat
Engine:	ENGINE: 6.7L I6 CUMMINS TURBO DIESEL
Interior:	Diesel Gray/Black
Transmission:	TRANSMISSION: 6-SPEED AUTOMATIC (66RFE)
Mileage:	192,368
Drivetrain:	4 Wheel Drive

Vehicle Description

PLEASE NOTE: BY APPOINTMENT ONLY!

CLEAN TITLENO ACCIDENTS REPORTED***EXCELLENT CONDITION - INSPECTED AND SERVICED -

2014 Ram 2500HDCummins Diesel 4x4 Long Bed (comes with 2-master keys)

***Loaded with: bluetooth, navigation, backup camera, heated seats and steering wheel, power seat w/lumbar support, premium Alpine sound system, remote start

TRADE-INS ARE WELCOMENATIONWIDE SHIPPING AT WHOLESALE RATES***FINANCING AVAILABLE ***WE OFFER EXTENDED WARRANTIES AT COST***OUR PRICES ARE NO-HAGGLE

Installed Options

Interior

- 2 12V DC Power Outlets
- 4-Way Driver Seat -inc: Manual Recline and Fore/Aft Movement
- 4-Way Passenger Seat -inc: Manual Recline and Fore/Aft Movement
- 40/20/40 Split Bench Seat- 5.0" Touchscreen Display- Analog Appearance
- Cargo Area Concealed Storage- Compass- Cruise Control w/Steering Wheel Controls
- Delayed Accessory Power- Fade-To-Off Interior Lighting- Front Armrest w/Cupholders
- Front Map Lights- Full Carpet Floor Covering -inc: Carpet Front And Rear Floor Mats
- Full Cloth Headliner- Full Folding Bench Front Facing Fold-Up Cushion Rear Seat
- Gauges -inc: Speedometer, Odometer, Voltmeter, Oil Pressure, Engine Coolant Temp, Tachometer, Oil Temperature, Transmission Fluid Temp, Engine Hour Meter, Trip Odometer and Trip Computer
- Glove Box- HVAC -inc: Underseat Ducts and Console Ducts
- Instrument Panel Bin, Dashboard Storage, Driver / Passenger And Rear Door Bins and 2nd Row Underseat Storage
- Integrated Voice Command w/Bluetooth
- Interior Trim -inc: Metal-Look Instrument Panel Insert, Metal-Look Door Panel Insert and Chrome/Metal-Look Interior Accents
- Manual Adjustable Front Head Restraints and Manual Adjustable Rear Head Restraints
- Manual Air Conditioning- Manual Tilt Steering Column
- Mini Overhead Console and 2 12V DC Power Outlets- Outside Temp Gauge
- Passenger Visor Vanity Mirror- Pickup Cargo Box Lights
- Power 1st Row Windows w/Driver And Passenger 1-Touch Up/Down
- Power Door Locks w/Autolock Feature- Power Rear Windows- Rear Center Armrest

Option Packages

Factory Installed Packages

ENGINE: 6.7L I6 CUMMINS TURBO DIESEL
-inc: 50 State Emissions, Selective Catalytic Reduction (Urea), 180 Amp Alternator, Cummins Turbo Diesel Badge, Tow Hooks, Current Generation Engine Controller, Diesel Exhaust Brake, 5.5 Additional Gallons of Diesel, GVWR: 10,000 lbs, RAM Active Air

\$8,160

TRANSMISSION: 6-SPEED AUTOMATIC (68RFE)

\$600

5TH WHEEL/GOOSENECK TOWING PREP GROUP

\$400

9 AMPLIFIED SPEAKERS W/SUBWOOFER

\$300

ADD FULL SIZE SPARE TIRE

\$250

CHROME BODYSIDE MOLDING

- Rear Cupholder- Rear view mirror w/microphone- Redundant Digital Speedometer
- Remote Keyless Entry w/Integrated Key Transmitter, Illuminated Entry and Panic Button
- Remote Start System- Sentry Key Immobilizer- Storage Tray- Systems Monitor
- Trip Computer- Urethane Gear Shifter Material- Valet Function- Vinyl Door Trim Insert

Exterior

- Auto On/Off Aero-Composite Halogen Headlamps w/Delay-Off- Black Exterior Mirrors
- Black Side Windows Trim and Black Front Windshield Trim
- Cargo Lamp w/High Mount Stop Light- Center Hub- Chrome Door Handles
- Chrome Front Bumper- Chrome Rear Step Bumper- Clearcoat Paint
- Deep Tinted Glass- Exterior Mirrors w/Heating Element- Firestone Brand Tires
- Fog Lamps- Front License Plate Bracket
- Full-Size Spare Tire Stored Underbody w/Crankdown- Fully Galvanized Steel Panels
- Manual Tailgate/Rear Door Lock- Power Rear Window
- Power Side Mirrors w/Manual Folding- Regular Box Style- Steel Spare Wheel
- Tailgate Rear Cargo Access- Tires: LT275/70R18E BSW AS
- Variable Intermittent Wipers- Wheels: 18" x 8.0" Polished Forged Aluminum

Safety

- 2 12V DC Power Outlets
- 4-Way Driver Seat -inc: Manual Recline and Fore/Aft Movement
- 4-Way Passenger Seat -inc: Manual Recline and Fore/Aft Movement
- 40/20/40 Split Bench Seat- 5.0" Touchscreen Display- Analog Appearance
- Cargo Area Concealed Storage- Compass- Cruise Control w/Steering Wheel Controls
- Delayed Accessory Power- Fade-To-Off Interior Lighting- Front Armrest w/Cupholders
- Front Map Lights- Full Carpet Floor Covering -inc: Carpet Front And Rear Floor Mats
- Full Cloth Headliner- Full Folding Bench Front Facing Fold-Up Cushion Rear Seat
- Gauges -inc: Speedometer, Odometer, Voltmeter, Oil Pressure, Engine Coolant Temp, Tachometer, Oil Temperature, Transmission Fluid Temp, Engine Hour Meter, Trip Odometer and Trip Computer
- Glove Box- HVAC -inc: Underseat Ducts and Console Ducts
- Instrument Panel Bin, Dashboard Storage, Driver / Passenger And Rear Door Bins and 2nd Row Underseat Storage
- Integrated Voice Command w/Bluetooth
- Interior Trim -inc: Metal-Look Instrument Panel Insert, Metal-Look Door Panel Insert and Chrome/Metal-Look Interior Accents
- Manual Adjustable Front Head Restraints and Manual Adjustable Rear Head Restraints
- Manual Air Conditioning- Manual Tilt Steering Column
- Mini Overhead Console and 2 12V DC Power Outlets- Outside Temp Gauge
- Passenger Visor Vanity Mirror- Pickup Cargo Box Lights
- Power 1st Row Windows w/Driver And Passenger 1-Touch Up/Down
- Power Door Locks w/Autolock Feature- Power Rear Windows- Rear Center Armrest
- Rear Cupholder- Rear View Mirror w/Microphone- Redundant Digital Speedometer
- Remote Keyless Entry w/Integrated Key Transmitter, Illuminated Entry and Panic Button
- Remote Start System- Sentry Key Immobilizer- Storage Tray- Systems Monitor
- Trip Computer- Urethane Gear Shifter Material- Valet Function- Vinyl Door Trim Insert

Mechanical

- Engine: 5.7L V8 HEMI VVT -inc: 50 State Emissions
- Transmission w/Driver Selectable Mode, Sequential Shift Control and Oil Cooler
- Transmission: 6-Speed Automatic (66RFE)- 160 Amp Alternator
- 2040# Maximum Payload- 3.73 Rear Axle Ratio- 32 Gal. Fuel Tank
- 4-Wheel Disc Brakes w/4-Wheel ABS, Front And Rear Vented Discs, Brake Assist and Hill Hold Control
- 730CCA Maintenance-Free Battery w/Run Down Protection
- Anti-Spin Differential Rear Axle- Auto Locking Hubs
- Class V Towing Equipment -inc: Hitch, Brake Controller and Trailer Sway Control
- Electronic Transfer Case- Front Anti-Roll Bar- GVWR: 9,000 lbs- HD Shock Absorbers
- Hydraulic Power-Assist Steering- Multi-Link Front Suspension w/Coil Springs
- Part-Time Four-Wheel Drive- Single Stainless Steel Exhaust
- Solid Axle Rear Suspension w/Coil Springs- Trailer Wiring Harness

\$175

CHROME TUBULAR SIDE STEPS

\$525

QUICK ORDER PACKAGE 2FZ BIG HORN

-inc: Engine: 6.7L I6 Cummins Turbo Diesel, Transmission: 6-Speed Automatic (68RFE), For Details Go To DriveUconnect.com, Leather Wrapped Steering Wheel, 3.42 Rear Axle Ratio, 6 Month Trial (Registration Required), Underhood Lamp, Steering Wheel Mounted Audio Controls, Bright/Bright Billets Grille, Front Center Seat Cushion Storage, Big Horn Regional Package, Bighorn Badge

\$1,835

GVWR: 10,000 LBS

BRIGHT SILVER METALLIC CLEARCOAT

DIESEL GRAY/BLACK, PREMIUM CLOTH 40/20/40 BENCH SEAT

-inc: Power Lumbar Adjust, 115V Auxiliary Power Outlet, Rear 60/40 Split Folding Seat, Folding Flat Load Floor Storage, Power 10-Way Driver Seat

TIRES: LT275/70R18E BSW AS

Option Packages Total

\$12,245

Stellar Auto INC.

Stellar Auto INC.

View this car on our website at stellarautoinc.com/7164721

Website: stellarautoinc.com

Phone: (818) 809-8676

Map: 2220 N Hollywood Way, Burbank, CA 91505

