



100% Financing Approval Is Our Goal!

www.ReflectionAutoSales.com Call or Text: **651-571-4531**

2019 GMC Terrain SLE

Our Price \$19,995

Estimated Payment*: **\$399**

*Estimate based on 60 months term at 7.0% APR.

*This estimation is for informational use only and is based on the information you provide. Actual loan amounts and payments will vary based on additional items such as taxes and fees as well as the actual interest rate available to you from a financial institution.

View this vehicle on our website at reflectionautosales.com



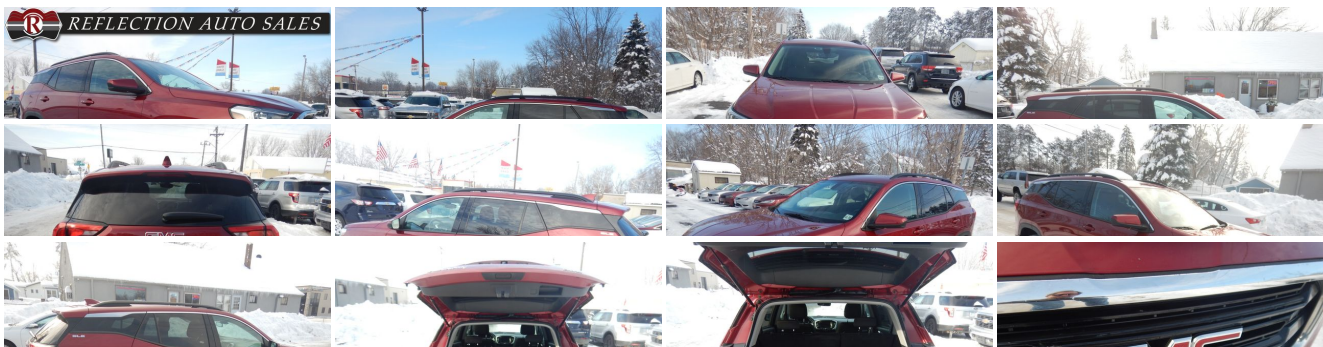
651-777-0100

4747 Geneva Ave N , Oakdale, Minnesota 55128

Photos

Details

Contact





Specifications:

Year:	2019
VIN:	3GKALTEV2KL151322
Make:	GMC
Stock:	2732
Model/Trim:	Terrain SLE
Condition:	Pre-Owned
Body:	SUV
Exterior:	Red Quartz Tintcoat
Engine:	ENGINE, 1.5L TURBO DOHC 4-CYLINDER, SIDI, VVT
Interior:	Jet Black Cloth
Transmission:	TRANSMISSION, 9-SPEED AUTOMATIC 9T45, ELECTRONICALLY-CONTROLLED WITH OVERDRIVE
Mileage:	119,176
Drivetrain:	All Wheel Drive
Economy:	City 24 / Highway 28

Vehicle Description

The 2019 GMC Terrain SLE is a compact SUV that is designed to offer the perfect balance of style, comfort, and performance. With a sleek red exterior and a black cloth interior, this vehicle is sure to turn heads wherever you go. Whether you're cruising around town or taking a long road trip, the Terrain SLE is the perfect vehicle for all your needs.

Under the hood, the GMC Terrain SLE is powered by a 1.5L TURBO DOHC 4-CYLINDER, SIDI, VVT engine that delivers impressive performance and fuel efficiency. With 170 horsepower and 203 lb-ft of torque, this engine is capable of taking you from 0 to 60 mph in just 8.9 seconds. Plus, with an EPA-estimated 26 mpg in the city and 30 mpg on the highway, you can enjoy long drives without worrying about frequent stops at the gas station.

Inside the cabin, the GMC Terrain SLE offers a spacious and comfortable interior that is designed to keep you and your passengers comfortable on even the longest journeys. With room for up to five passengers, this vehicle offers plenty of legroom and headroom for everyone. The black cloth interior is not only stylish but also easy to clean, making it perfect for families and pet owners.

The Terrain SLE is packed with features that make driving a pleasure. The infotainment system includes an 8-inch diagonal color touchscreen display, Bluetooth connectivity, and Apple CarPlay and Android Auto compatibility. The rearview camera makes parking and reversing a breeze, while the keyless open and start system allows you to start the engine with just the push of a button.

Safety is a top priority for GMC, and the Terrain SLE is no exception. This vehicle comes equipped with a range of advanced safety features, including a rear vision camera, lane change alert with side blind zone alert, rear cross traffic alert, and a tire pressure monitoring system. These features work together to keep you and your passengers safe on the road.

The GMC Terrain SLE is a vehicle that is designed to offer the perfect combination of style, performance, and comfort. With its sleek red exterior, black cloth interior, and powerful engine, this SUV is sure to turn heads wherever you go. So why wait? Visit your local GMC dealer today and take the Terrain SLE for a test drive. You won't be disappointed!

Contact us now for more details. You can own this ride for \$399 per month! Vehicle qualifies for Autocheck buy back guarantee! Clean Title, Fully inspected and detailed! Low, low interest rates! Limited Warranty Available! All Credit situations WELCOME. 100% FINANCING APPROVAL - IS OUR GOAL!!! - APPLY NOW At www.reflectionautosales.com

Installed Options

Interior

- Door locks, power programmable with lockout protection
- Driver Information Center monitors 26 various systems including, Vehicle Information

Option Packages

Factory Installed Packages

ENGINE, 1.5L TURBO DOHC 4-CYLINDER, SIDI, VVT

- Menu (oil life, tire pressure, standard/metric units) and Trip Information Menu (trip 1, trip 2, fuel range, average fuel economy, instant fuel economy, average vehicle speed) and compass display
- Floor mats, carpeted front- Floor mats, carpeted rear
- Air conditioning, single-zone manual- Air vents, 2nd row- Assist handle, driver
- Assist handle, front passenger- Assist handles, rear outboard
- Compass display, located in the Driver Information Center
- Cruise control, electronic with set and resume speed
- Display, 4.2" multi-color driver information screen (When (Y29) Infotainment Package I is ordered, includes enhanced capability with audio, phone and navigation.)
- Head restraints, 2-way adjustable (up/down), front
- Keyless Open, includes extended range Remote Keyless Entry
- Keyless Start, push-button- Map pocket, driver seatback
- Map pocket, front passenger seatback- Mirror, inside rearview auto-dimming
- Power outlet, cargo area auxiliary, 12-volt- Power outlet, front auxiliary, 12-volt
- Rear Seat Reminder- Remote panic alarm
- Seat release levers, 2nd row mechanical release levers in cargo area
- Seat trim, premium cloth- Seat, driver 4-way manual, fore/aft, up/down with recline
- Seat, front passenger 4-way manual, fore/aft, up/down with recline
- Seat, rear 60/40 split-folding with center armrest- Seatback, passenger side, flat-folding
- Seating, 5-passenger- Seats, front bucket- Sensor, cabin humidity
- Speedometer, miles/kilometers
- Steering wheel controls, mounted audio and phone interface
- Steering wheel, leather-wrapped 4-spoke- Sunglass storage, overhead
- Theft-deterrent system, unauthorized entry
- Window, power with driver Express-Up/Down
- Windows, power with front passenger Express-Down
- Windows, power with rear Express-Down

Exterior

- Tire, spare, T135/70R16 blackwall (Standard with (LYX) 1.5L Turbo 4-cylinder engine only.)
- Tires, P225/65R17 all-season blackwall (AWD models only.)- Active Aero Shutters
- Active Noise Cancellation, noise control system- Door handles, body-color
- Glass, acoustic, laminated windshield- Glass, deep-tinted, rear
- Headlamp control, automatic on and off- Headlamps, automatic delay
- Headlamps, high intensity discharge with C-shaped lighting - Liftgate, rear manual
- Mechanical jack with tools- Mirror caps, body-color
- Mirrors, outside heated power-adjustable, manual-folding- Tail lamps, LED signature
- Trim, Black lower body
- Wheel, spare, 16" (40.6 cm) steel (Standard with (LYX) 1.5L Turbo 4-cylinder engine only.)
- Wheels, 17" x 7" (43.2 cm x 17.8 cm) Silver painted aluminum (Standard with (LYX) 1.5L Turbo 4-cylinder engine only.)

Safety

- Door locks, power programmable with lockout protection
- Driver Information Center monitors 26 various systems including, Vehicle Information Menu (oil life, tire pressure, standard/metric units) and Trip Information Menu (trip 1, trip 2, fuel range, average fuel economy, instant fuel economy, average vehicle speed) and compass display
- Floor mats, carpeted front- Floor mats, carpeted rear
- Air conditioning, single-zone manual- Air vents, 2nd row- Assist handle, driver
- Assist handle, front passenger- Assist handles, rear outboard
- Compass display, located in the Driver Information Center
- Cruise control, electronic with set and resume speed
- Display, 4.2" multi-color driver information screen (When (Y29) Infotainment Package I is ordered, includes enhanced capability with audio, phone and navigation.)
- Head restraints, 2-way adjustable (up/down), front
- Keyless Open, includes extended range Remote Keyless Entry
- Keyless Start, push-button- Map pocket, driver seatback
- Map pocket, front passenger seatback- Mirror, inside rearview auto-dimming
- Power outlet, cargo area auxiliary, 12-volt- Power outlet, front auxiliary, 12-volt
- Rear Seat Reminder- Remote panic alarm
- Seat release levers, 2nd row mechanical release levers in cargo area
- Seat trim, premium cloth- Seat, driver 4-way manual, fore/aft, up/down with recline
- Seat, front passenger 4-way manual, fore/aft, up/down with recline
- Seat, rear 60/40 split-folding with center armrest- Seatback, passenger side, flat-folding
- Seating, 5-passenger- Seats, front bucket- Sensor, cabin humidity
- Speedometer, miles/kilometers
- Steering wheel controls, mounted audio and phone interface
- Steering wheel, leather-wrapped 4-spoke- Sunglass storage, overhead
- Theft-deterrent system, unauthorized entry

(170 hp [127.0 kW] @ 5600 rpm, 203 lb-ft of torque [275.0 N-m] @ 2000 - 4000 rpm)

TRANSMISSION, 9-SPEED AUTOMATIC 9T45, ELECTRONICALLY-CONTROLLED WITH OVERDRIVE

AIR CONDITIONING, DUAL-ZONE AUTOMATIC CLIMATE CONTROL

with individual climate settings for driver and right-front passenger

BRAKES, 4-WHEEL ANTILOCK, 4-WHEEL DISC, 12.6" FRONT AND 11.3" REAR

DRIVER CONVENIENCE PACKAGE

includes (BTV) Remote Start, (CJ2) dual-zone automatic climate control, (KA1) driver and front passenger heated seats, (AG1) 8-way power driver seat adjuster, (AL9) driver power lumbar control and (V2P) roof-mounted luggage rack side rails

\$1,375

MIRROR CAPS, BLACK

REMOTE START

AXLE, 3.47 FINAL DRIVE RATIO

RED QUARTZ TINTCOAT

\$595

SLE PREFERRED EQUIPMENT GROUP

Includes Standard Equipment

AUDIO SYSTEM, 7" DIAGONAL GMC INFOTAINMENT SYSTEM

includes multi-touch display, AM/FM stereo, includes Bluetooth streaming audio for music and most phones; featuring Android Auto and Apple CarPlay capability for compatible phones

JET BLACK, PREMIUM CLOTH SEAT TRIM

SEATS, FRONT BUCKET

WHEELS, 17" X 7" (43.2 CM X 17.8 CM) SILVER PAINTED ALUMINUM

Option Packages Total

\$1,970

- Theft-deterrent system, unauthorized entry
- Window, power with driver Express-Up/Down
- Windows, power with front passenger Express-Down
- Windows, power with rear Express-Down

Mechanical

- Axle, 3.47 final drive ratio (Standard with (LYX) 1.5L Turbo 4-cylinder engine only.)
- Brake lining, high-performance, Duralife- Brake, electronic parking
- Brakes, 4-wheel antilock, 4-wheel disc, 11.8" front and 11.3" rear (Standard with (LYX) 1.5L Turbo 4-cylinder engine only.)
- Capless fuel fill- Chassis, All-Wheel Drive System (All-wheel drive models only.)
- Driver Shift Controls
- Electronic Precision Shift, button and trigger based transmission interface
- Engine control, stop-start system
- Engine, 1.5L Turbo DOHC 4-cylinder, SIDI, VVT (170 hp [127.0 kW] @ 5600 rpm, 203 lb-ft of torque [275.0 N-m] @ 2000 - 4000 rpm)
- Exhaust, single outlet (Standard with (LYX) 1.5L Turbo 4-cylinder engine only.)
- Fuel, gasoline, E15- Suspension, front MacPherson strut
- Suspension, rear 4-link, non-isolated- Trailing provisions, 1500 lbs. (680 kg)
- Transmission, 9-speed automatic 9T45, electronically-controlled with overdrive (Standard with (LYX) 1.5L Turbo 4-cylinder engine only.)

Price displayed is after all discount and promotions. Trade in promotions may not be combined with any other promotion or coupon. Contact Sales Department for details!

>100% FINANCING APPROVAL - IS OUR GOAL!!! - APPLY NOW AT

 </p>
 <h3>www.reflectionautosales.com</h3>

Reflection Auto Sales

Reflection Auto Sales

View this car on our website at [reflectionautosales.com/7164566](http://www.reflectionautosales.com/7164566)

Website: [reflectionautosales.com](http://www.reflectionautosales.com)

Phone: 651-777-0100

Map: 4747 Geneva Ave N, Oakdale, Minnesota 55128

