



2015 Chevrolet Camaro LS

Website Price \$20,995

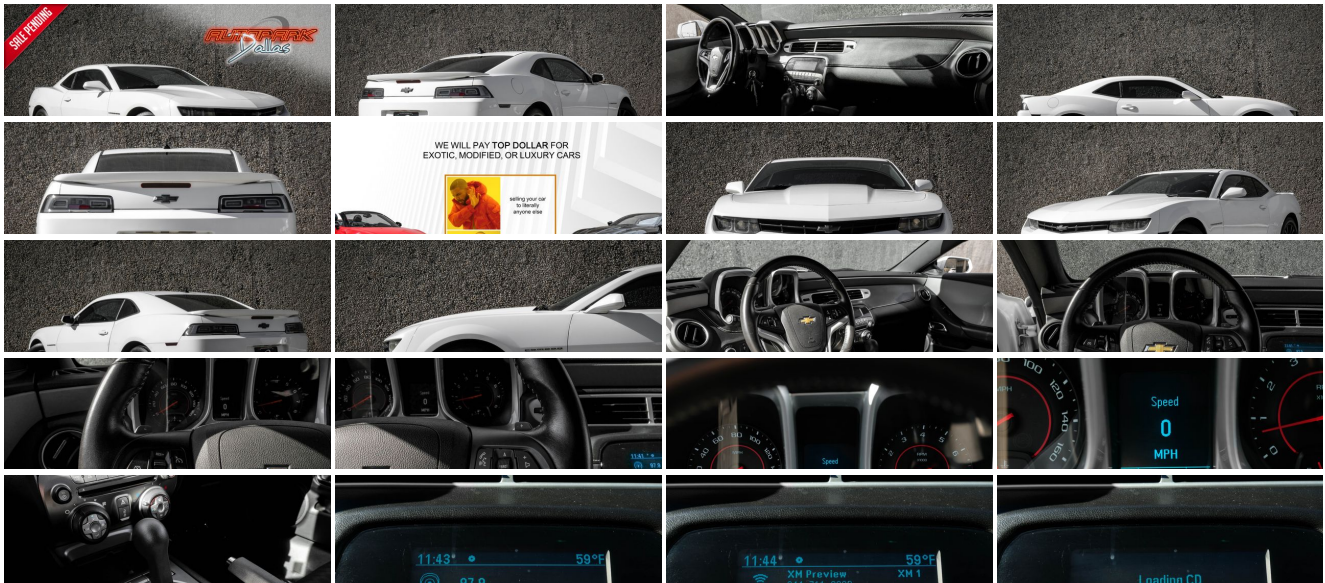
View this vehicle on our website at autoparkdallas.com



(214) 945-2601

2061 S Stemmons Fwy , Lewisville, TX 75067

- Photos
- Details
- Contact



Specifications:

Year:	2015
VIN:	2G1FB1E39F9293384
Make:	Chevrolet
Stock:	1089
Model/Trim:	Camaro LS
Condition:	Pre-Owned
Body:	Coupe
Exterior:	Summit White
Engine:	ENGINE, 3.6L SIDI DOHC V6 VVT
Interior:	Gray Cloth
Mileage:	36,278
Drivetrain:	Rear Wheel Drive
Economy:	City 19 / Highway 30

Vehicle Description

AutoPark Dallas is thrilled to offer you this modified (Car) for sale!

MORE DETAILS COMING SOON!!!

Financing is available!

Check out our Payment Calculator to get an estimate on your monthly payments!

OR

Get pre-approved in no time by filling out a credit application on the 'Finance' section of our website!

Check out our Google Reviews by *Clicking* this [LINK!](#)

Referrals and Testimonials is what our business is built on!

The team here at AutoPark Dallas, is dedicated to offering a level of customer service not usually found in the automobile industry. Thanks to years of extensive car buying / selling experience, we pursue quality used and new vehicles that are hand-picked from factory sources. Our love for automobiles and dislike of traditional dealership tactics is what motivates us to provide the service we do! The pride we take in continuing this service long after the vehicle has been delivered is what we strive for! Looking forward to making every effort to see that our customer is completely satisfied and a friend for life!

Pre-purchase inspections are always welcomed!

We also offer airport pick-up, competitive financing options, free CarFax Reports, Car Shipping nationwide, Extended Warranty plans, and so much more!

Trade-In(s) are always accepted or sell us your used car (MODIFIED OR NOT)! Please call or text for more information about Trade-Ins or selling your car to us @ (214) 945-2601!

#(214) 945-2601

Call or Text *Anytime!*

Se habla Español

WE BUY CARS!

WWW.AUTOPARKDALLAS.COM

Installed Options

Interior

- Door locks, power programmable with lockout protection- Floor mats, carpeted front
- Remote Keyless Entry- Seat trim, LS Cloth seat trim
- Seats, front Sport bucket includes adjustable head restraints and folding rear seat with trunk pass-through
- Air conditioning, single-zone manual- Air filtration system with pollen filter
- Coat hooks, driver- and passenger-side rear
- Compass, located in Driver Information Center - Console, floor, with armrest
- Cruise control, electronic with set and resume speed, steering wheel mounted
- Cup holders, 2 front- Dead pedal, driver- Defogger, rear-window, electric
- Driver Information Center, monochromatic display- Glovebox, lockable
- Instrumentation, analog includes speedometer, tachometer, fuel gauge and engine temperature gauge
- Lighting, front reading lamps
- Lighting, interior with illuminated entry and theater dimming - Map pockets, front doors
- Mirror, inside rearview manual day/night
- Power outlets, 2 auxiliary 1 located in center console storage area and 1 located at front of center console
- Seat adjuster, driver 4-way manual (fore/aft, up/down) with power recliner
- Seat adjuster, front passenger 2-way manual (fore/aft) with power recliner
- Shift knob, urethane- Steering column, manual rake and telescopic
- Steering wheel, 3-spoke, urethane- Theft-deterrent system, PASS-Key III
- Trunk release, remote, located on driver-side
- Visors, driver and front passenger vanity mirrors, covered
- Windows, power with driver and passenger Express-Down/Up

Exterior

- Wheels, 18" (45.7 cm) painted aluminum- Door handles, body-color
- Fascias, front and rear body-color with front grille and rear diffuser
- Headlamps, halogen composite with automatic exterior lamp control - Hood blanket
- Mirrors, outside power-adjustable body-color- Molding, Black roof ditch
- Moldings, body-color lower rocker- Tire sealant and inflator kit in place of spare tire
- Tires, P245/55R18 touring, blackwall, all-season- Wipers, front intermittent

Safety

- Door locks, power programmable with lockout protection- Floor mats, carpeted front
- Remote Keyless Entry- Seat trim, LS Cloth seat trim
- Seats, front Sport bucket includes adjustable head restraints and folding rear seat with trunk pass-through
- Air conditioning, single-zone manual- Air filtration system with pollen filter
- Coat hooks, driver- and passenger-side rear
- Compass, located in Driver Information Center - Console, floor, with armrest
- Cruise control, electronic with set and resume speed, steering wheel mounted
- Cup holders, 2 front- Dead pedal, driver- Defogger, rear-window, electric
- Driver Information Center, monochromatic display- Glovebox, lockable
- Instrumentation, analog includes speedometer, tachometer, fuel gauge and engine temperature gauge
- Lighting, front reading lamps
- Lighting, interior with illuminated entry and theater dimming - Map pockets, front doors
- Mirror, inside rearview manual day/night
- Power outlets, 2 auxiliary 1 located in center console storage area and 1 located at front of center console
- Seat adjuster, driver 4-way manual (fore/aft, up/down) with power recliner
- Seat adjuster, front passenger 2-way manual (fore/aft) with power recliner
- Shift knob, urethane- Steering column, manual rake and telescopic
- Steering wheel, 3-spoke, urethane- Theft-deterrent system, PASS-Key III

Option Packages

Factory Installed Packages

ENGINE, 3.6L SIDI DOHC V6 VVT
(323 hp [240.8 kW] @ 6800 rpm, 278 lb-ft of
torque [375.3 N-m] @ 4800 rpm)

- Trunk release, remote, located on driver-side
- Visors, driver and front passenger vanity mirrors, covered
- Windows, power with driver and passenger Express-Down/Up

Mechanical

- Transmission, 6-speed automatic includes TAPshift manual shift controls on steering wheel
- Alternator, 150 amps- Axle, 2.92 ratio
- Battery, maintenance-free with rundown protection and retained accessory power
- Brakes, 4-wheel antilock, 4-wheel disc (Single piston front brakes with super corner rear brakes.)
- Engine, 3.6L SIDI DOHC V6 VVT (323 hp [240.8 kW] @ 6800 rpm, 278 lb-ft of torque [375.3 N-m] @ 4800 rpm)
- Exhaust, dual-outlet stainless-steel with bright tips- Rear wheel drive
- Steering, power, variable ratio- Suspension, Sport

AUTOPARK

Dallas

Auto Park Dallas

View this car on our website at autoparkdallas.com/7164344

Website: autoparkdallas.com

Phone: (214) 945-2601

Map: [2061 S Stemmons Fwy, Lewisville, TX 75067](#)

