



2005 Ford Explorer XLT

Our Price \$11,995

View this vehicle on our website at no1autosales.com



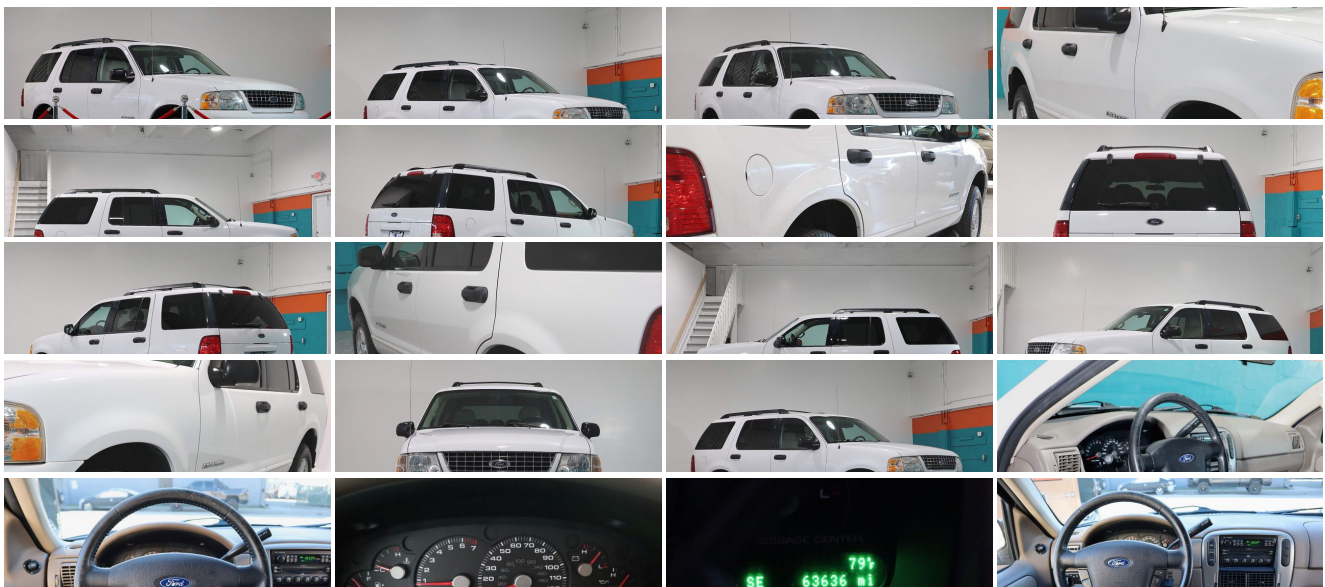
954-964-8669

5819 C Rodman Street , Hollywood, Florida 33023

Photos

Details

Contact



Specifications:

Year:	2005
VIN:	1FMZU63K45ZA20262
Make:	Ford
Model/Trim:	Explorer XLT
Condition:	Pre-Owned
Body:	SUV
Exterior:	Oxford White
Engine:	4.0L SOHC V6 FLEXIBLE FUEL CAPABLE ENGINE
Interior:	Tan Leather
Transmission:	5-SPEED AUTOMATIC TRANSMISSION W/OD
Mileage:	63,636
Drivetrain:	Rear Wheel Drive
Economy:	City 16 / Highway 21

Vehicle Description

*** WARRANTY! CARFAX GUARANTEED! 1 OWNER! 3RD ROW SEAT! 33 SERVICE RECORDS! FLORIDA VEHICLE! TRADES WELCOME! ***
The 2005 Ford Explorer XLT delivers excellent performance with style and dependability. This example is extremely clean inside and out and very well maintained by one previous owner with 33 documented service records. Equipped with a 4.0L V6 engine, Leather, Running Boards, Remote Entry, Power Seat, Factory Sound System, Power Windows/Locks/Mirrors, Cruise Control, Climate Control, Rear AC, Roof Rack, Traction Control, Tow Package and 16 inch Alloys with like new Michelin Tires. Only \$11,995 Cash! Financing available. * View more photos at www.no1autosales.com *

We here at #1 Auto Sales strive to make this your most enjoyable automotive purchasing experience with our hand selected inventory consisting of the highest quality, clean title vehicles! The overwhelming majority of our inventory has a vehicle warranty with additional coverages available to customize to your liking. Our relationship with numerous lenders allows us to provide multiple financing options to those with good credit, poor credit, or even first time buyers with rates starting as low as 2.9%! Additionally, for those who prefer a more personal touch and wish to avoid dealing with banks or third party lenders and their generic approvals, we offer our own custom-tailored "Buy Here-Pay Here" program that is structured around the needs and desires of each individual customer!

As always, comfort and satisfaction with your purchase is our primary focus. We welcome any inspection of our vehicles prior to purchase and are more than happy to have the vehicle delivered to the local service center of your choice. If there is ever anything we can do to enhance your experience please feel free to contact any of our sales representatives, available seven days a week, at 954-964-8669 or visit us at www.no1autosales.com to schedule an appointment today!

Installed Options

Interior

- Cloth low-back front sport bucket seats w/adjustable head restraints, 6-way pwr driver seat, manual driver lumbar support
- (2) front/rear pwr points- (3) grab handles- (4) color keyed coat hooks
- (4) load floor tie-down hooks- 5-passenger seating
- 60/40 split-folding 2nd row seat w/head restraints
- AM/FM stereo w/CD-inc clock, 4-speakers, 60-watts- Air conditioning
- Black leather-wrapped steering wheel- Cargo area dome light
- Cargo management system- Center dome lamp w/1st row map lights
- Color keyed cloth sunvisors w/illuminated visor vanity mirrors
- Color keyed front/rear carpeted floor mats
- Color keyed plastic scuff plates on all doors & liftgate
- High-series floor console-inc: storage bin, (2) front & (2) rear cup holders, front & rear pwr points, coin holder, tissue/map holder, molded mat w/pencil holder, heat vents/AC registers
- Illuminated entry- Illuminated glove box- Message center
- Outside temp display & compass
- Overhead console-inc: two map lamps, ticket clip, sunglass holder, garage door opener bin
- Pwr door locks w/cargo area lock/unlock button
- Pwr windows-inc: "one-touch-down" driver window- Rear window defroster
- Remote keyless entry-inc: 2 key fobs, 2-stage unlocking, autolock, liftgate glass release
- Securilock/immobilizer passive anti-theft system
- Speed control w/fingertip control, tap-up/tap-down feature- Tilt steering column
- Tire pressure monitoring system- Warm steel accent door trim spears/instrument panel

Option Packages

Factory Installed Packages

4.0L SOHC V6 FLEXIBLE FUEL CAPABLE ENGINE

5-SPEED AUTOMATIC TRANSMISSION W/OD

BLACK ROOF RAIL CROSSBARS

\$60

BLACK RUNNING BOARDS

\$450

CLASS III/IV TRAILER TOWING PREP PKG

-inc: 3.73 axle ratio, class III hitch, 7-pin connector, frame mounted hitch receiver

\$150

CONVENIENCE GROUP

-inc: electrochromic mirror, automatic headlamps, keyless entry w/keypad

\$250

ELECTRONIC AM/FM STEREO W/IN-DASH 6-DISC CD/MP3 CHANGER

-inc: 290-watt Audiophile system, 7-speakers,

\$510

Exterior

- Black door handles- Black folding pwr mirrors w/approach lamps- Black roof rails
- Body color body-side moldings- Chrome egg crate design grille
- Dual intermittent rear wiper/washer- Exterior liftgate release switch- Fog lamps
- One-piece liftgate w/pop-up flip glass
- Painted monochromatic body color front/rear bumpers
- Privacy glass-inc: rear door/rear quarter/liftgate glass
- Projector halogen beam reflector headlamps- Security approach lamps
- Solar-tinted glass-inc: windshield, front door glass
- Speed-sensitive dual intermittent front wipers

Safety

- Cloth low-back front sport bucket seats w/adjustable head restraints, 6-way pwr driver seat, manual driver lumbar support
- (2) front/rear pwr points- (3) grab handles- (4) color keyed coat hooks
- (4) load floor tie-down hooks- 5-passenger seating
- 60/40 split-folding 2nd row seat w/head restraints
- AM/FM stereo w/CD-inc clock, 4-speakers, 60-watts- Air conditioning
- Black leather-wrapped steering wheel- Cargo area dome light
- Cargo management system- Center dome lamp w/1st row map lights
- Color keyed cloth sunvisors w/illuminated visor vanity mirrors
- Color keyed front/rear carpeted floor mats
- Color keyed plastic scuff plates on all doors & liftgate
- High-series floor console-inc: storage bin, (2) front & (2) rear cup holders, front & rear pwr points, coin holder, tissue/map holder, molded mat w/pencil holder, heat vents/AC registers
- Illuminated entry- Illuminated glove box- Message center
- Outside temp display & compass
- Overhead console-inc: two map lamps, ticket clip, sunglass holder, garage door opener bin
- Pwr door locks w/cargo area lock/unlock button
- Pwr windows-inc: "one-touch-down" driver window- Rear window defroster
- Remote keyless entry-inc: 2 key fobs, 2-stage unlocking, autolock, liftgate glass release
- Securilock/immobilizer passive anti-theft system
- Speed control w/fingertip control, tap-up/tap-down feature- Tilt steering column
- Tire pressure monitoring system- Warm steel accent door trim spears/instrument panel

Mechanical

- P235/70R16 all-season BSW tires- 16" painted cast aluminum wheels
- 22.5 gallon fuel tank- 3.55 axle ratio- 4-Wheel independent suspension
- 4-wheel anti-lock brakes
- 4.0L SOHC V6 engine *Gas only in CA, NY, VT, & ME. Flexible Fuel capable in all other states*
- 5-speed automatic transmission w/OD
- 72 amp maintenance-free battery w/battery saver feature
- AdvanceTrac w/roll stability control- Brake/shift interlock
- Class II trailer towing w/receiver hitch-inc: 3500# capacity, 4-pin connector
- Engine block heater *Standard on non-fleet vehicles in AK, MN, ND, SD, MT, WI & WY*
- Full-size spare tire w/steel wheel, underbody mount- Pwr 4-wheel disc brakes
- Pwr rack & pinion steering- Rear wheel drive

LEATHER-TRIMMED LOW BACK FRONT SPORT BUCKET SEATS

-inc: 8-way pwr driver seat, pwr driver/manual passenger lumbar support **\$695**

Option Packages Total

\$2,115

All advertised prices are for cash purchases and do not include additional costs such as dealer fee, sales tax or any applicable finance charges.

No 1 Auto Sales Inc

No 1 Auto Sales Inc

View this car on our website at no1autosales.com/7164305

Website: no1autosales.com

Phone: 954-964-8669

Map: [5819 C Rodman Street, Hollywood, Florida 33023](#)

