

2010 Ford Super Duty F-350 DRW XLT

View this car on our website at dfwtruckco.com/7164048/ebrochure



Sale Price **\$35,990**

Specifications:

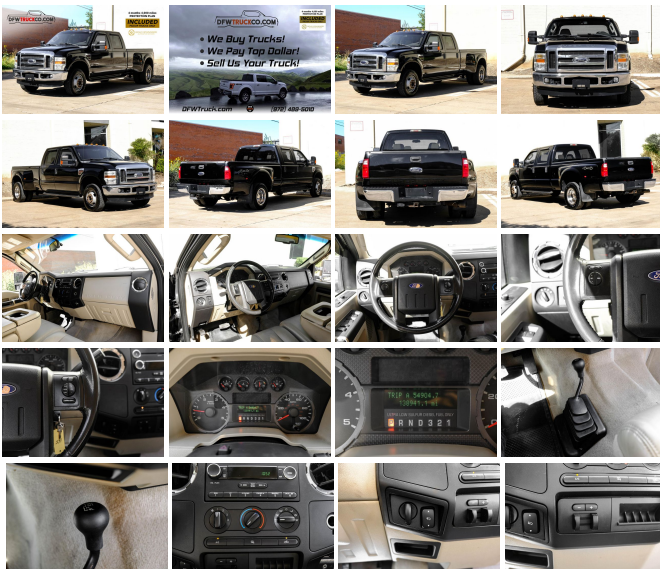
Year:	2010
VIN:	1FTWW3DR3AEA78344
Make:	Ford
Stock:	A78344
Model/Trim:	Super Duty F-350 DRW XLT
Condition:	Pre-Owned
Body:	Pickup Truck
Exterior:	Black
Engine:	6.4L OHV TURBO-DIESEL POWER STROKE V8 ENGINE
Interior:	Beige
Mileage:	138,859
Drivetrain:	4 Wheel Drive

Non-smoker owner, Vehicle Runs Well, Smooth ride, Regularly maintained, Lots of storage, Arctic cold a/c, Must test drive, Done all Scheduled Maintenance, Primarily highway miles, Family friendly, Drives great

**FREE 4 MO/4000 MILE POWERTRAIN WARRANTY OR
EXTENDED WARRANTY AVAILABLE**

2010 FORD F-350

Black Exterior
Beige Leather Interior
138,941 Miles



Clean CARFAX
Texas Owned Vehicle
XLT Pickup 4D 8 ft Trim Package

Steering Wheel Controls
Air Conditioning
Satellite Radio
CD Player
Power Windows/Locks
Power Mirrors
Cruise Control
Automatic Transmission
V8, Turbo Dsl 6.4L Engine
Well Maintained
Very Clean!
Professionally Detailed

And Much More!!

Come see our indoor showroom in Dallas with carefully selected pickup trucks, and SUVs. Including vehicles from Chevrolet, Ford, Dodge, and more.

Every car is hand-picked, and our prices can't be beaten!

We invite you to stop by to meet with one of our knowledgeable sales professionals.

We offer a no-hassle sales environment, free vehicle history reports,

2010 Ford Super Duty F-350 DRW XLT
DFWTruckCo.com LLC - 214-298-0620 - View this car on our website at dfwtruckco.com/7164048/ebrochure

Our Location :



2010 Ford Super Duty F-350 DRW XLT
DFWTruckCo.com LLC - 214-298-0620 - View this car on our website at dfwtruckco.com/7164048/ebrochure

Installed Options

Interior

- Cloth 40/20/40 split bench seat -inc: armrest, cupholders, storage
- Front/rear color-keyed carpeted floor mats
- Pwr windows w/driver one-touch-down & backlit switches
- Pwr door locks w/backlit switches- Remote keyless entry & perimeter anti-theft alarm
- Air conditioning-inc: black vents w/chrome rings - Driver manual lumbar support
- FlexFold 60/40 rear bench seat w/fold-flat feature, grocery hooks, dual cupholders, tray, steel load floor
- Rear armrests w/cupholders- Color-keyed carpet full-floor covering
- Color-keyed scuff plates- Tilt steering wheel
- Black instrumentation -inc: tachometer, speedometer, oil pressure, coolant temp, fuel gauge, indicator lights, message center w/odometer, trip odometer, engine hour meter, warning messages, transmission temp gauge, distance-to-empty, average fuel economy

Option Packages

Factory Installed Packages

6.4L OHV TURBO-DIESEL POWER STROKE V8 ENGINE
-inc: 135-amp HD alternator, TurboBoost gauge, air filter minder, 15,000# trailer hitch receiver w/2.5" hitch & 2" hitch adapter, 4-wheel pwr hydro-boost disc brakes **\$7,485**

Option Packages Total
\$7,485

- Accessory delay- SecuriLock anti-theft ignition
- Cruise control -inc: steering wheel mounted controls- (4) air registers w/positive shut-off
- Auxiliary pwr point- Dash-top tray- Glove box- Ashtray & cigar lighter
- Instrument panel mounted storage bin & trash bag hook
- Color-keyed door panel trim -inc: color-keyed soft armrest, pwr switch bezel molded upper applique, upper & lower map pockets, grab handle & reflector
- Color-keyed cloth headliner- Front passenger-side roof ride handle
- Rear seating roof ride handles- Driver & front passenger grab handles
- Rear seat LH/RH grab handles
- Dual color-keyed cloth sunvisors-inc: driver-side map strap, passenger-side mirror insert
- Front door operated dome lamp w/time delay off & IP switch - Front/rear map lamps
- Dual color-keyed coat hooks

Exterior

- (7) LT245/75R17E all-season BSW tires- Full-size spare tire & wheel w/lock & carrier
- Manual telescoping pwr heated trailer tow mirrors w/heated spotter mirror
- Rear privacy glass- (6) 17" argent painted steel wheels
- Chrome front bumper w/glossy body-color top cover- Chrome rear bumper
- Front fender vents- Box-rail & tailgate top-edge moldings
- Grille w/medium platinum insert & chrome surround - Dual beam jewel effect headlamps
- Pickup box/cargo lights- Roof clearance lights- Underhood service light
- Solar tinted glass- Interval windshield wipers- Front/rear license plate brackets
- Black door handles- Removable locking tailgate w/black handle & Tailgate Assist

Safety

- Cloth 40/20/40 split bench seat -inc: armrest, cupholders, storage
- Front/rear color-keyed carpeted floor mats
- Pwr windows w/driver one-touch-down & backlit switches
- Pwr door locks w/backlit switches- Remote keyless entry & perimeter anti-theft alarm
- Air conditioning-inc: black vents w/chrome rings - Driver manual lumbar support
- FlexFold 60/40 rear bench seat w/fold-flat feature, grocery hooks, dual cupholders, tray, steel load floor
- Rear armrests w/cupholders- Color-keyed carpet full-floor covering
- Color-keyed scuff plates- Tilt steering wheel
- Black instrumentation -inc: tachometer, speedometer, oil pressure, coolant temp, fuel gauge, indicator lights, message center w/odometer, trip odometer, engine hour meter, warning messages, transmission temp gauge, distance-to-empty, average fuel economy
- Accessory delay- SecuriLock anti-theft ignition
- Cruise control -inc: steering wheel mounted controls- (4) air registers w/positive shut-off
- Auxiliary pwr point- Dash-top tray- Glove box- Ashtray & cigar lighter
- Instrument panel mounted storage bin & trash bag hook
- Color-keyed door panel trim -inc: color-keyed soft armrest, pwr switch bezel molded upper applique, upper & lower map pockets, grab handle & reflector
- Color-keyed cloth headliner- Front passenger-side roof ride handle
- Rear seating roof ride handles- Driver & front passenger grab handles
- Rear seat LH/RH grab handles
- Dual color-keyed cloth sunvisors-inc: driver-side map strap, passenger-side mirror insert
- Front door operated dome lamp w/time delay off & IP switch - Front/rear map lamps
- Dual color-keyed coat hooks

Mechanical

- 6.8L SOHC 30-valve EFI Triton V10 engine
- TorqShift 5-speed automatic transmission w/OD -inc: tow/haul mode (w/213 ESOF Transfer Case, includes I/P mounted cupholders, secondary glove box) (REQ: 99Y Engine)
- 4.10 axle ratio w/limited slip rear axle (w/99R Engine REQ: 53B TowBoss Pkg)
- 12.5K trailer hitch receiver-inc: 2" hitch- (2) front tow hooks
- Pwr 4-wheel disc brakes w/hydro-boost- Stationary elevated engine idle control
- Manual transfer case & hubs- 4-wheel drive- 72 amp/hr (650 CCA) battery
- 157-amp HD alternator
- Trailer tow pkg-inc: 7-wire harness w/relays, 7/4-pin trailer combination connector
- Integrated trailer brake controller *w/66D Pickup Box Delete, 7 & 4 way combo trailer tow socket & bracket deleted*
- 8' pickup box-inc: (6) tie-down hooks, partitionable & stackable storage
- Mono-beam front axle w/coil spring suspension- Rear auxiliary springs
- Full-floating rear axle- HD shock absorbers- Front/rear stabilizer bar
- Pwr steering w/steering damper- 4-ton hydraulic jack

DFWTruckCo.com LLC

dfwtruckco.com

214-298-0620

8811 John W Carpenter Freeway

Dallas, TX 75247

© 2024 AutoRevo - All rights reserved. - Powered by [AutoRevo](#)