

2018 Ford Escape S

Prestige Sales Department 408-379-2277

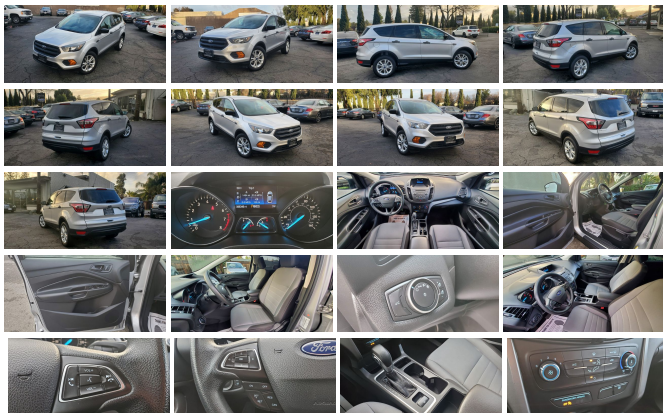
View this car on our website at prestigepre-owned.com/7163508/ebrochure



Our Price **\$13,445**

Specifications:

Year:	2018
VIN:	1FMCU0F70JUA10197
Make:	Ford
Stock:	A3306
Model/Trim:	Escape S
Condition:	Pre-Owned
Body:	SUV
Exterior:	Ingot Silver Metallic
Engine:	ENGINE: 2.5L I-VCT
Interior:	Charcoal Black Cloth
Transmission:	TRANSMISSION: 6-SPEED AUTOMATIC W/SELECTSHIFT
Mileage:	88,346
Drivetrain:	Front Wheel Drive
Economy:	City 21 / Highway 29



BLOW OUT SALE!!

2017 FORD ESCAPE S FWD--2.0L 4 CYLINDER ENGINE---(**WITH *88K MILES**)---WELL TAKEN CARE OF MILES---INCREDIBLE FORD RELIABILITY---2 PREVIOUS OWNERS WITH CLEAN CARFAX---NO ACCIDENTS---VERY WELL MAINTAINED

OPTIONS INCLUDE:

- 17" SPARKLE SILVER ALUMINUM WHEELS
- AUTOMATIC HEADLAMPS
- INTEGRATED BLIND SPOT MIRROR
- LED TAILLIGHTS
- 60/40 SPLIT FOLDING REAR SEAT
- 6-WAY ADJUSTABLE DRIVER SEAT

STEERING WHEEL MOUNTED CONTROLS

4.2" LCD SCREEN

REMOTE KEYLESS ENTRY

POWER DOOR LOCKS AND WINDOWS

-POWER TAILGATE

AND MUCH MUCH MORE

VERY ATTRACTIVE (**INGOT SILVER METALLIC EXTERIOR**)--
ON (**CHARCOAL BLACK INTERIOR**)--SMOG-SAFETY
INSPECTION IS COMPLETED-READY FOR DELIVERY---TRULY
AWESOME SUV! ABSOLUTELY AMAZING CONDITION ALL
AROUND.

FINANCING AVAILABLE--LOW RATES--BAD CREDIT ALSO
WELCOME--TRADE INS ACCEPTED PAID FOR OR NOT-EXTENED
SERVICE CONTRACTS AVAILABLE UP TO 5 YEARS OR 60K FROM
PURCHASE DATE. PLEASE CALL 408-379-2277 FOR MORE
INFORMATION OR VISIT @ WWW.PRESTIGEPRE-OWNED.COM

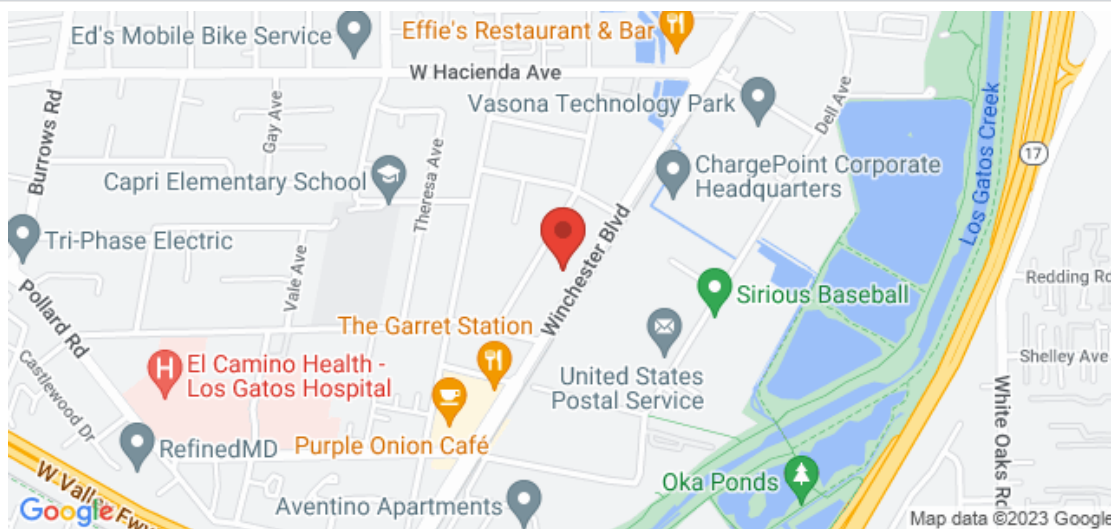
At our dealership we work very hard to accurately describe our vehicles
through text descriptions and elaborate photos. When you purchase a
pre-owned vehicle it is not a new vehicle. Any used vehicle can have
normal wear and blemishes. Before placing a bid please read the
descriptions thoroughly and view all pictures.

Disclaimer: All vehicles subject to prior sale. We reserve the right to
make changes without notice, and are not responsible for errors or
omissions. All prices exclude government fees and taxes, any finance
charges, and any emissions test charge.

2018 Ford Escape S

Prestige Pre-owned - 408-379-2277 - View this car on our website at prestigepre-owned.com/7163508/ebrochure

Our Location :



Installed Options

Interior

- 1 Seatback Storage Pocket- 4 12V DC Power Outlets
- 60-40 Folding Split-Bench Front Facing Manual Reclining Fold Forward Seatback Cloth Rear Seat
- Air Filtration- Analog Appearance- Cargo Area Concealed Storage- Cargo Space Lights
- Carpet Floor Trim- Cloth Door Trim Insert
- Cloth Front Bucket Seats -inc: 6-way manual driver (fore/aft, up/down, recline) and 4-way manual front passenger (fore/aft w/manual recline)
- Compass- Cruise Control w/Steering Wheel Controls- Day-Night Rearview Mirror
- Delayed Accessory Power- Driver And Passenger Visor Vanity Mirrors- Driver Foot Rest
- Driver Seat- FOB Controls -inc: Cargo Access- Fade-To-Off Interior Lighting
- Front Center Armrest- Front Cupholder- Front Map Lights
- Full Carpet Floor Covering -inc: Carpet Front And Rear Floor Mats - Full Cloth Headliner
- Full Floor Console w/Covered Storage, Mini Overhead Console w/Storage and 4 12V DC Power Outlets
- Gauges -inc: Speedometer, Odometer, Engine Coolant Temp, Tachometer, Trip Odometer and Trip Computer
- HVAC -inc: Underseat Ducts- Illuminated Glove Box
- Interior Concealed Storage, Driver / Passenger And Rear Door Bins, 2nd Row Underseat Storage and Audio Media Storage
- Interior Trim -inc: Metal-Look Instrument Panel Insert, Metal-Look Door Panel Insert, Metal-Look Console Insert and Metal-Look Interior Accents
- Manual Air Conditioning- Manual Tilt/Telescoping Steering Column
- Manual w/Tilt Front Head Restraints and Manual Adjustable Rear Head Restraints
- Metal-Look Gear Shifter Material- Outside Temp Gauge- Passenger Seat
- Power 1st Row Windows w/Driver 1-Touch Up/Down
- Power Door Locks w/Autolock Feature
- Power Rear Windows and Fixed 3rd Row Windows- Rear Cupholder
- Remote Keyless Entry w/Integrated Key Transmitter, Illuminated Entry and Panic Button
- SYNC Selective Service Internet Access- Seats w/Cloth Back Material
- Securilock Anti-Theft Ignition (pats) Immobilizer- Systems Monitor- Trip Computer

Exterior

- Auto On/Off Aero-Composite Halogen Daytime Running Lights Preference Setting Headlamps w/Delay-Off
- Black Door Handles- Black Grille
- Black Power Side Mirrors w/Convex Spotter and Manual Folding- Black Rear Bumper
- Black Side Windows Trim
- Body-Colored Front Bumper w/Metal-Look Rub Strip/Fascia Accent- Clearcoat Paint
- Fixed Rear Window w/Fixed Interval Wiper, Heated Wiper Park and Defroster
- Fully Galvanized Steel Panels- Gray Bodyside Cladding and Gray Wheel Well Trim
- LED Brakelights- Liftgate Rear Cargo Access- Light Tinted Glass
- Spare Tire Mounted Inside Under Cargo- Steel Spare Wheel
- Tailgate/Rear Door Lock Included w/Power Door Locks
- Tires: P235/55R17 A/S BSW -inc: Low-Rolling-Resistance, mini spare
- Variable Intermittent Wipers- Wheels: 17" Steel w/Sparkle Silver-Painted Covers

Safety

- 1 Seatback Storage Pocket- 4 12V DC Power Outlets
- 60-40 Folding Split-Bench Front Facing Manual Reclining Fold Forward Seatback Cloth Rear Seat
- Air Filtration- Analog Appearance- Cargo Area Concealed Storage- Cargo Space Lights
- Carpet Floor Trim- Cloth Door Trim Insert
- Cloth Front Bucket Seats -inc: 6-way manual driver (fore/aft, up/down, recline) and 4-way manual front passenger (fore/aft w/manual recline)
- Compass- Cruise Control w/Steering Wheel Controls- Day-Night Rearview Mirror
- Delayed Accessory Power- Driver And Passenger Visor Vanity Mirrors- Driver Foot Rest
- Driver Seat- FOB Controls -inc: Cargo Access- Fade-To-Off Interior Lighting
- Front Center Armrest- Front Cupholder- Front Map Lights
- Full Carpet Floor Covering -inc: Carpet Front And Rear Floor Mats - Full Cloth Headliner
- Full Floor Console w/Covered Storage, Mini Overhead Console w/Storage and 4 12V DC Power Outlets
- Gauges -inc: Speedometer, Odometer, Engine Coolant Temp, Tachometer, Trip Odometer and Trip Computer
- HVAC -inc: Underseat Ducts- Illuminated Glove Box

- Interior Concealed Storage, Driver / Passenger And Rear Door Bins, 2nd Row Underseat Storage and Audio Media Storage
- Interior Trim -inc: Metal-Look Instrument Panel Insert, Metal-Look Door Panel Insert, Metal-Look Console Insert and Metal-Look Interior Accents
- Manual Air Conditioning- Manual Tilt/Telescoping Steering Column
- Manual w/Tilt Front Head Restraints and Manual Adjustable Rear Head Restraints
- Metal-Look Gear Shifter Material- Outside Temp Gauge- Passenger Seat
- Power 1st Row Windows w/Driver 1-Touch Up/Down
- Power Door Locks w/Autolock Feature
- Power Rear Windows and Fixed 3rd Row Windows- Rear Cupholder
- Remote Keyless Entry w/Integrated Key Transmitter, Illuminated Entry and Panic Button
- SYNC Selective Service Internet Access- Seats w/Cloth Back Material
- Securilock Anti-Theft Ignition (pats) Immobilizer- Systems Monitor- Trip Computer

Mechanical

- 15.7 Gal. Fuel Tank- 3.51 Axle Ratio
- 4-Wheel Disc Brakes w/4-Wheel ABS, Front Vented Discs, Brake Assist, Hill Hold Control and Electric Parking Brake
- Battery w/Run Down Protection- Brake Actuated Limited Slip Differential
- Electric Power-Assist Speed-Sensing Steering- Engine: 2.5L i-VCT -inc: flex-fuel capability
- Front And Rear Anti-Roll Bars- Front-Wheel Drive- GVWR: TBD
- Gas-Pressurized Shock Absorbers- Quasi-Dual Stainless Steel Exhaust
- Short And Long Arm Rear Suspension w/Coil Springs
- Strut Front Suspension w/Coil Springs
- Transmission w/Driver Selectable Mode and Oil Cooler
- Transmission: 6-Speed Automatic w/SelectShift

Option Packages

Factory Installed Packages

ENGINE: 2.5L I-VCT
-inc: flex-fuel capability

TRANSMISSION: 6-SPEED AUTOMATIC
W/SELECTSHIFT

EQUIPMENT GROUP 100A

STANDARD PAINT

INGOT SILVER METALLIC

CHARCOAL BLACK, CLOTH FRONT
BUCKET SEATS
-inc: 6-way manual driver (fore/aft,
up/down, recline) and 4-way
manual front passenger
(fore/aft w/manual recline)

All interest rates are based on above average credit.

Campbell, CA 95008

© 2023 AutoRevo - All rights reserved. - Powered by AutoRevo