



2008 Cadillac STS-V

Website Price \$20,995

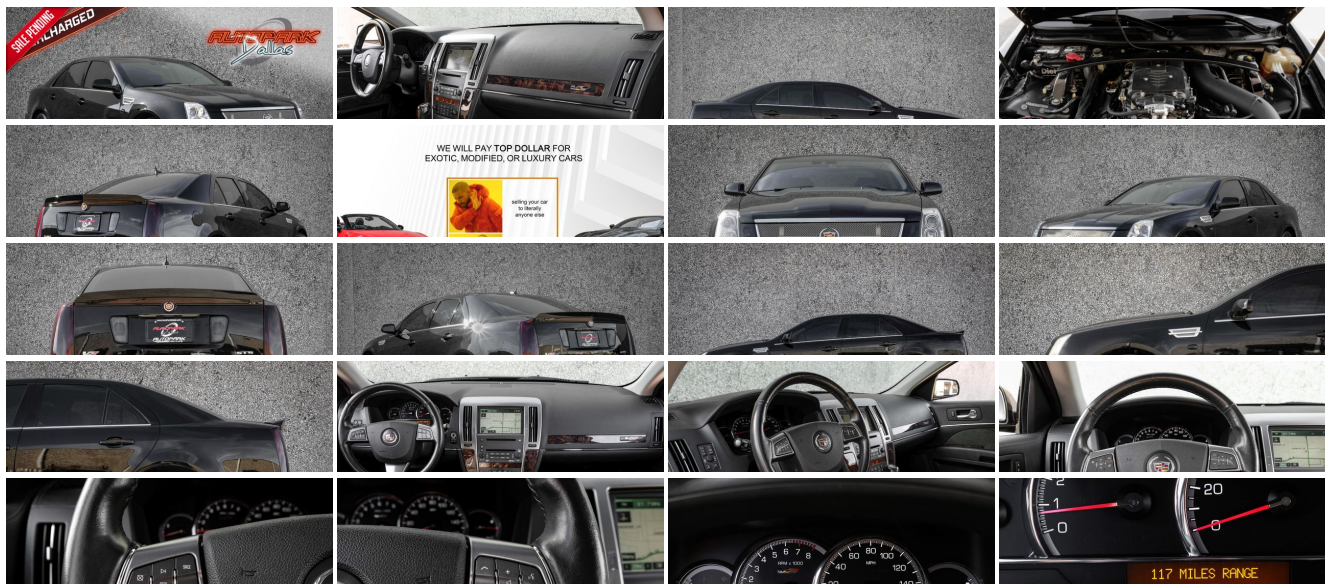
View this vehicle on our website at autoparkdallas.com



(214) 945-2601

2061 S Stemmons Fwy , Lewisville, TX 75067

- Photos
- Details
- Contact



Specifications:

Year:	2008
VIN:	1G6DX67D680179510
Make:	Cadillac
Stock:	1006
Model/Trim:	STS-V
Condition:	Pre-Owned
Body:	Sedan
Exterior:	Black Raven
Engine:	ENGINE, NORTHSTAR SUPERCHARGED 4.4L V8 DOHC MFI, VARIABLE VALVE TIMING
Interior:	Ebony Leather
Mileage:	64,868
Drivetrain:	Rear Wheel Drive
Economy:	City 13 / Highway 19

Vehicle Description

AutoPark Dallas is thrilled to offer you this Rare Cadillac STS-V for sale! Push the starter button to the right of the Cadillac STS-V's steering wheel, and the supercharged V-8 leaps to life while the driver-information LED display briefly illuminates the greeting, "Ready for STS-V?" The V team enlisted the help of Mercedes-Benz's cabin supplier, Drxlmaier, to outfit the STS-V with French-stitched, beautifully grained leathers for the top of the dash, the center console, and the door panels. So you know it's the quality you expect to of a high-end car like the STS! DO! NOT! HESITATE!!! To swing by and check out this STS-V that we have parked here in our indoor 16,000 Sq Ft Showroom located in Dallas , Texas amongst our inventory of 100+ other Unique / Modified and Luxury Vehicles!

2008 Cadillac STS-V

Rare

Low Miles

Modification!

Tinted Taillights

Cold Air Intake

STOCK!

Black Raven Metallic Exterior

Black Leather Interior

Dual-zone Air Conditioning

Cruise Control

Steering Wheel Mounted Controls

Universal Garage Opener

Manual Mode

NORTHSTAR SUPERCHARGED 4.4L V8

6 Speed Auto Transmission

Rear Wheel Drive
Professionally Detailed
Well Maintained!
* Free CarFax Report !*
AND SO MUCH MORE!!!

Financing is available!

Check out our Payment Calculator to get an estimate on your monthly payments!

OR

Get pre-approved in no time by filling out a credit application on the 'Finance' section of our website!

We also offer MANY different Extended Warranty options!

Check out our Google Reviews by *Clicking* this LINK!

Referrals and Testimonials is what our business is built on!

The team here at AutoPark Dallas, is dedicated to offering a level of customer service not usually found in the automobile industry. Thanks to years of extensive car buying / selling experience, we pursue quality used and new vehicles that are hand-picked from factory sources. Our love for automobiles and dislike of traditional dealership tactics is what motivates us to provide the service we do! The pride we take in continuing this service long after the vehicle has been delivered is what we strive for! Looking forward to making every effort to see that our customer is completely satisfied and a friend for life!

Pre-purchase inspections are always welcomed!

We also offer airport pick-up, competitive financing options, free CARFAX Reports, Car Shipping nationwide, Extended Warranty plans, and so much more!

Trade-In(s) are always accepted or sell us your used car (MODIFIED OR NOT)! Please call or text for more information about Trade-Ins or selling your car to us @ (214) 945-2601!

#(214) 945-2601

Call or Text **Anytime!**

Se habla Español

WE BUY CARS!

WWW.AUTOPARKDALLAS.COM

Installed Options

Interior

Option Packages

Factory Installed Packages

- Cruise control, electronic with set and resume speed - Decklid, power release
- Door locks, power programmable
- Driver Information Center, with display in gauge cluster including tire pressure and 5 language capability (English, French, German, Italian and Spanish)
- Head-Up Display, 4-color, reconfigurable, with digital readouts for vehicle speed, selected gear, Adaptive Cruise Control indicator, audio system information, high-beam indicator, fuel level and 5 language capability (English, French, German, Italian and Spanish)
- Keyless Access, includes 2 remote transmitters which enable automatic door unlock and open by pulling door handle
- Keyless ignition, engaged with push button start
- Seat trim, Nuance full-leather with perforated Preferred sueded fabric material inserts
- Seats, front bucket with articulating head restraints
- Theft-deterrent system, PASS-Key III - Tire Pressure Monitor System
- Trunk release, power- Adaptive Remote Start- Armrest, front center
- Armrest, rear center with dual cup holders - Cargo net, includes tie-downs
- Climate control, dual-zone automatic with individual climate settings for driver and right-front passenger
- Console, floor with floor shifter, integral armrest, storage compartment and cup holders
- Defogger, rear-window electric with front and side window outlets for the driver and right-front passenger
- Floor mats, carpeted front and rear- Glovebox, passenger-side, lockable
- Instrumentation, analog
- Interior trim, leather-wrapped, includes IP, front and rear door trims and center console
- Lane Departure Warning
- Lighting, interior with illuminated entry and exit feature, courtesy lights and entrance lights in base of door and under instrument panel
- Map pockets, front and rear door storage
- Memory Package, recalls 2 driver "presets" for 8-way power driver seat with easy exit, outside mirrors, power tilt and telescoping steering wheel with easy exit and audio system/climate control settings
- Mirror, inside rearview auto-dimming with OnStar controls- Parking brake release
- Personalization features, ability to set exterior lighting, door lock, and remote start features
- Rear Parking Assist
- Retained accessory power, audio system, power windows and power sunroof may be used for up to 10 minutes after ignition is turned off and doors remain closed
- Seat adjusters, 4-way power driver and front passenger lumbar control
- Seat adjusters, driver and front passenger 8-way power
- Seats, heated driver and front passenger
- Seats, heated rear outboard seating positions - Side Blind Zone Alert
- Steering column, power tilt and telescopic
- Steering wheel controls, mounted audio, HVAC system and voice recognition controls
- Steering wheel, heated and leather-wrapped with kinetic aluminum trim
- Universal Home Remote, includes garage door opener, 3-channel programmable
- Visors, driver and front passenger illuminated vanity mirrors, telescoping
- Windows, power with front and rear Express-Down/Up and passenger lockout
- Wood trim, Olive Ash burl with Kinetic aluminum accents

Exterior

- Sunroof, power, tilt-sliding with express-open and sunshade
- Fog lamps, front, integral in front fascia- Glass, Solar-Ray deep-tinted
- Grille, chrome-plated, stainless-steel wire mesh- Headlamp washer system
- Headlamps, Intellibeam, automatic low/high beam control
- Headlamps, Xenon, High-Intensity Discharge (HID), windshield wiper-activated with flash-to-pass feature, includes (CE4) headlamp washer system
- Mirrors, outside heated power-adjustable and driver-side auto-dimming, body-color, manual-folding
- Spoiler, rear (Unique appearance.)- Tail lamps, LED illumination
- Tires, P255/45R18 front and P275/40R19 rear, Pirelli, W-rated, EMT, blackwall
- Washer nozzles, heated
- Wheels, 18" x 8.5" (45.6 cm x 21.5 cm) front and 19" x 9.5" (48.2 cm x 24.1 cm) rear, painted pearl nickel finish aluminum
- Wipers, Rainsense

Safety

- Cruise control, electronic with set and resume speed - Decklid, power release
- Door locks, power programmable
- Driver Information Center, with display in gauge cluster including tire pressure and 5 language capability (English, French, German, Italian and Spanish)
- Head-Up Display, 4-color, reconfigurable, with digital readouts for vehicle speed, selected gear, Adaptive Cruise Control indicator, audio system information, high-beam indicator, fuel level and 5 language capability (English, French, German, Italian and Spanish)
- Keyless Access, includes 2 remote transmitters which enable automatic door unlock and open by pulling door handle

ENGINE, NORTHSTAR SUPERCHARGED 4.4L V8 DOHC MFI, VARIABLE VALVE TIMING

(469 hp [349 kW] @ 6400 rpm, 439 lb-ft of torque [595 N-m] @ 3900 rpm)

- Keyless ignition, engaged with push button start
- Seat trim, Nuance full-leather with perforated Preferred sueded fabric material inserts
- Seats, front bucket with articulating head restraints
- Theft-deterrent system, PASS-Key III - Tire Pressure Monitor System
- Trunk release, power- Adaptive Remote Start- Armrest, front center
- Armrest, rear center with dual cup holders - Cargo net, includes tie-downs
- Climate control, dual-zone automatic with individual climate settings for driver and right-front passenger
- Console, floor with floor shifter, integral armrest, storage compartment and cup holders
- Defogger, rear-window electric with front and side window outlets for the driver and right-front passenger
- Floor mats, carpeted front and rear- Glovebox, passenger-side, lockable
- Instrumentation, analog
- Interior trim, leather-wrapped, includes IP, front and rear door trims and center console
- Lane Departure Warning
- Lighting, interior with illuminated entry and exit feature, courtesy lights and entrance lights in base of door and under instrument panel
- Map pockets, front and rear door storage
- Memory Package, recalls 2 driver "presets" for 8-way power driver seat with easy exit, outside mirrors, power tilt and telescoping steering wheel with easy exit and audio system/climate control settings
- Mirror, inside rearview auto-dimming with OnStar controls- Parking brake release
- Personalization features, ability to set exterior lighting, door lock, and remote start features
- Rear Parking Assist
- Retained accessory power, audio system, power windows and power sunroof may be used for up to 10 minutes after ignition is turned off and doors remain closed
- Seat adjusters, 4-way power driver and front passenger lumbar control
- Seat adjusters, driver and front passenger 8-way power
- Seats, heated driver and front passenger
- Seats, heated rear outboard seating positions- Side Blind Zone Alert
- Steering column, power tilt and telescopic
- Steering wheel controls, mounted audio, HVAC system and voice recognition controls
- Steering wheel, heated and leather-wrapped with kinetic aluminum trim
- Universal Home Remote, includes garage door opener, 3-channel programmable
- Visors, driver and front passenger illuminated vanity mirrors, telescoping
- Windows, power with front and rear Express-Down/Up and passenger lockout
- Wood trim, Olive Ash burl with Kinetic aluminum accents

Mechanical

- Driver Shift Control- Drivetrain, rear-wheel drive
- Transmission, 6-speed automatic for RWD, tap-up/tap-down (Must specify a transmission)
- Automatic Level Control, self-adjusting
- Battery, maintenance-free with rundown protection- Brake Assist- Brakes, Brembo
- Cooling system, heavy-duty- Differential, limited slip
- Engine, Northstar supercharged 4.4L V8 DOHC MFI, Variable Valve Timing (469 hp [349 kW] @ 6400 rpm, 439 lb-ft of torque [595 N-m] @ 3900 rpm)
- Exhaust outlets, dual chrome-plated tips- Premium Steering Gear, ZF
- Steering, power, speed-sensitive, rack-and-pinion
- Suspension, 4-wheel independent, performance-tuned



Auto Park Dallas

View this car on our website at autoparkdallas.com/7163404

Website: autoparkdallas.com

Phone: (214) 945-2601

Map: 2061 S Stemmons Fwy, Lewisville, TX 75067

