

# 2022 Ford F-150 Raptor 4X4 NAV,360 CAM,HTD/COOL LTH,65 MILES

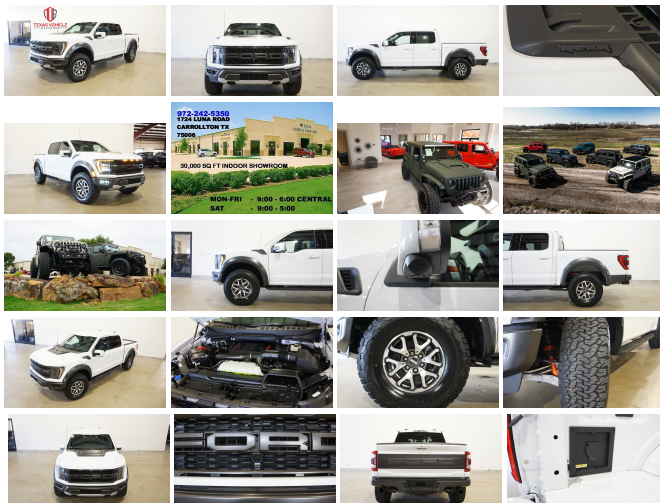
View this car on our website at [tveauto.com/7163127/ebrochure](https://tveauto.com/7163127/ebrochure)



Our Price **\$87,900**

## Specifications:

<b>Year:</b>	2022
<b>VIN:</b>	1FTFW1RGXNFC44628
<b>Make:</b>	Ford
<b>Stock:</b>	C44628
<b>Model/Trim:</b>	F-150 Raptor 4X4 NAV,360 CAM,HTD/COOL LTH,65 MILES
<b>Condition:</b>	Pre-Owned
<b>Body:</b>	Pickup Truck
<b>Exterior:</b>	Oxford White
<b>Engine:</b>	ENGINE: 3.5L V6 ECOBOOST HIGH OUTPUT
<b>Interior:</b>	Blue Suede/Leather
<b>Transmission:</b>	TRANSMISSION: ELECTRONIC 10-SPEED AUTOMATIC
<b>Mileage:</b>	65
<b>Drivetrain:</b>	4 Wheel Drive
<b>Economy:</b>	City 14 / Highway 16



NATION WIDE FINANCING

SUBMIT CREDIT APP [WWW.TVEAUTO.COM](https://www.tveauto.com)

OR CALL 972-242-5350

2022 FORD F150 SUPER CREW SVT RAPTOR 4X4, 3.5L V6 ECOBOOST ENGINE, ELECTRIC 10 SPEED AUTOMATIC TRANSMISSION, ONLY 65 MILES, OXFORD WHITE W/RHAPSODY BLUE LEATHER & SUEDE INTERIOR, CARFAX REPORTS 1 OWNER NO ACCIDENTS, NON-SMOKER, BLUE INTERIOR PACKAGE, REMOTE START, RIGID INDUSTRIES LED FOGLIGHTS, FRONT & REAR PARK DISTANCE SENSORS TOUCH SCREEN

DISTANCE SENSORS, TOUCH SCREEN NAVIGATION, BACK-UP CAMERA, CARGO CAMERA, 360 VIEW CAMERAS, BLACK CAST ALUMINUM RUNNING BOARDS, POWER WINDOWS, POWER DOOR LOCKS, POWER FOLDING HEATED MIRRORS WITH TURN SIGNALS, BLIND SPOT CONTROL, POWER & HEATED TILT/TELESCOPE STEERING WHEEL WITH AUDIO & CRUISE CONTROLS, PADDLE SHIFTERS, STEERING MODE CONTROL, DUAL POWER HEATED & COOLED RECARO FRONT SEATS WITH DRIVER 3 MEMORY POSITION, POWER ADJUSTABLE PEDALS, LANE KEEPING ASSIST, TRACTION CONTROL, TRAIL CONTROL, DRIVE MODE CONTROL, DAMPER MODE CONTROL, EXHAUST MODE CONTROL, PRO TRAILER BACK-UP ASSIST, TRAILER BRAKE CONTROLLER, UPFITTER SWITCHES, ICE COLD A/C, DUAL CLIMATE CONTROL, BANG & OLUFSEN HD AM/FM/SIRIUS, MICROSOFT SYNC VOICE ACTIVATED SYSTEM, SELF DIMMING REAR VIEW MIRROR, HOMELINK GARAGE CONTROLS, DUAL LIGHTED VANITY MIRRORS, REAR HEATED SEATS, REAR A/C VENTS, POWER SLIDING REAR WINDOW, TOW PACKAGE WITH RECEIVER HITCH, RUBBER FLOOR MATS, OWNER'S MANUAL, 2 KEYS/2 REMOTES. 17" CAST ALUMINUM WHEELS, FRONT TIRES ARE BFGOODRICH LT315/70R/17, REAR TIRES ARE BFGOODRICH LT315/70R/17. RUNS AND DRIVES GREAT. GIVE US A CALL @ 972-242-5350 OR STOP BY FOR A TEST DRIVE. 1724 LUNA RD IN CARROLLTON - 2 MILES NORTH OF 635. CLICK ON CARFAX ICON TO VIEW A FULL REPORT AT NO COST TO YOU.

---

2022 Ford F-150 Raptor 4X4 NAV,360 CAM,HTD/COOL LTH,65 MILES

Texas Vehicle Exchange - 972-242-5350 - View this car on our website at [tveauto.com/7163127/ebrochure](http://tveauto.com/7163127/ebrochure)

## Our Location :



2022 Ford F-150 Raptor 4X4 NAV,360 CAM,HTD/COOL LTH,65 MILES

Texas Vehicle Exchange - 972-242-5350 - View this car on our website at [veauto.com/7163127/ebrochure](http://veauto.com/7163127/ebrochure)

## Installed Options

### Interior

- 2 Seatback Storage Pockets- 3 12V DC Power Outlets
- 3 12V DC Power Outlets and 2 120V AC Power Outlets - Air Filtration- Compass
- Cruise Control w/Steering Wheel Controls- Day-Night Auto-Dimming Rearview Mirror
- Delayed Accessory Power- Digital/Analog Appearance
- Distance Pacing w/Traffic Stop-Go- Driver And Passenger Visor Vanity Mirrors
- Driver Seat- Dual Zone Front Automatic Air Conditioning
- FOB Controls -inc: Cargo Access and Remote Engine Start- Fade-To-Off Interior Lighting
- Front And Rear Map Lights- Full Cloth Headliner
- Full Vinyl/Rubber Floor Covering -inc: Vinyl/Rubber Front And Rear Floor Mats
- Gauges -inc: Speedometer, Odometer, Oil Pressure, Engine Coolant Temp, Tachometer, Inclinometer, Transmission Fluid Temp, Trip Odometer and Trip Computer
- HVAC -inc: Underseat Ducts and Console Ducts - Illuminated Front Cupholder
- Instrument Panel Bin, Dashboard Storage, Interior Concealed Storage, Driver / Passenger And Rear Door Bins and 2nd Row Underseat Storage
- Interior Trim -inc: Metal-Look Instrument Panel Insert, Cabback Insulator, Metal-Look Door Panel Insert, Metal-Look Console Insert and Chrome Interior Accents
- Keypad
- Leather Trim Seats -inc: flow-through console, floor shifter, unique seat back bolsters, 10-way power driver seat w/lumbar, multi-adjustable power front passenger seat, heated and ventilated front, and 2nd row 60/40 flip-up split seat
- Leather/Chrome Gear Shifter Material- Leather/Metal-Look Steering Wheel
- Locking Glove Box- Manual Tilt/Telescoping Steering Column
- Manual w/Tilt Front Head Restraints and Manual Adjustable Rear Head Restraints
- Memory Settings -inc: Door Mirrors and Pedals
- Mini Overhead Console w/Storage, 3 12V DC Power Outlets and 2 120V AC Power Outlets
- Mobile Hotspot Internet Access- Outside Temp Gauge- Passenger Seat
- Perimeter Alarm- Pickup Cargo Box Lights
- Power 1st Row Windows w/Driver And Passenger 1-Touch Up/Down
- Power Adjustable Pedals- Power Door Locks w/Autolock Feature- Power Rear Windows
- Remote Keyless Entry And Push Button Start - Rear Cupholder

- Proximity Key For Doors And Push Button Start - Rear Cupholder
- Redundant Digital Speedometer
- Remote Keyless Entry w/Integrated Key Transmitter, Illuminated Entry and Panic Button
- Remote Releases -Inc: Keyfob Cargo Access
- SYNC 4 w/Enhanced Voice Recognition -inc: 12" LCD capacitive touchscreen w/swipe capability, information on demand panel, wireless phone connection, cloud connected, AppLink w/App catalog, 911 Assist, Apple CarPlay and Android Auto compatibility, digital owners manual, conversational voice command recognition and connected navigation, Note: Navigation services require SYNC 4 and FordPass Connect (optional on select vehicles), complimentary connect service and the FordPass app (see FordPass Terms for details), Customer receives a complimentary 90-day trial of navigation services when an eligible vehicle is added to a member's FordPass account, Trial period begins on the new vehicle warranty start date, At the end of the complimentary period, navigation service will terminate, Connected service and features depend on compatible AT&T network availability, Evolving technology/cellular networks/vehicle capability may limit functionality and prevent operation of connected features, FordPass App, compatible w/select smartphone platforms, is available via a download, Message and data rates may apply
- Seats w/Leatherette Back Material- Securilock Anti-Theft Ignition (pats) Immobilizer
- Smart Device Remote Engine Start- Systems Monitor- Trip Computer

## Exterior

- Aluminum Panels- Black Fender Flares- Black Grille- Black Side Windows Trim
- Body-Colored Door Handles
- Body-Colored Front Bumper w/Black Rub Strip/Fascia Accent and 2 Tow Hooks
- Body-Colored Power Heated Side Mirrors w/Driver Auto Dimming, Power Folding and Turn Signal Indicator
- Body-Colored Rear Step Bumper w/2 Tow Hooks- Cab Clearance Lights
- Cargo Lamp w/High Mount Stop Light- Clearcoat Paint- Deep Tinted Glass
- Ford Co-Pilot360 - Autolamp Auto On/Off Aero-Composite Led Low/High Beam Auto High-Beam Daytime Running Lights Preference Setting Headlamps w/Delay-Off
- Full-Size Spare Tire Stored Underbody w/Crankdown- Headlights-Automatic Highbeams
- LED Brakelights- Perimeter/Approach Lights- Power Rear Window w/Defroster
- Regular Box Style- Running Boards- Steel Spare Wheel- Tailgate Rear Cargo Access
- Tailgate/Rear Door Lock Included w/Power Door Locks
- Tires: LT315/70R17 BSW A/T -inc: same spare- Variable Intermittent Wipers
- Wheels: 17" Cast Aluminum -inc: same spare

## Safety

- 2 Seatback Storage Pockets- 3 12V DC Power Outlets
- 3 12V DC Power Outlets and 2 120V AC Power Outlets - Air Filtration- Compass
- Cruise Control w/Steering Wheel Controls- Day-Night Auto-Dimming Rearview Mirror
- Delayed Accessory Power- Digital/Analog Appearance
- Distance Pacing w/Traffic Stop-Go- Driver And Passenger Visor Vanity Mirrors
- Driver Seat- Dual Zone Front Automatic Air Conditioning
- FOB Controls -inc: Cargo Access and Remote Engine Start - Fade-To-Off Interior Lighting
- Front And Rear Map Lights- Full Cloth Headliner
- Full Vinyl/Rubber Floor Covering -inc: Vinyl/Rubber Front And Rear Floor Mats
- Gauges -inc: Speedometer, Odometer, Oil Pressure, Engine Coolant Temp, Tachometer, Inclinator, Transmission Fluid Temp, Trip Odometer and Trip Computer
- HVAC -inc: Underseat Ducts and Console Ducts - Illuminated Front Cupholder
- Instrument Panel Bin, Dashboard Storage, Interior Concealed Storage, Driver / Passenger And Rear Door Bins and 2nd Row Underseat Storage
- Interior Trim -inc: Metal-Look Instrument Panel Insert, Cabback Insulator, Metal-Look Door Panel Insert, Metal-Look Console Insert and Chrome Interior Accents
- Keypad
- Leather Trim Seats -inc: flow-through console, floor shifter, unique seat back bolsters, 10-way power driver seat w/lumbar, multi-adjustable power front passenger seat, heated and ventilated front, and 2nd row 60/40 flip-up split seat
- Leather/Chrome Gear Shifter Material- Leather/Metal-Look Steering Wheel
- Locking Glove Box- Manual Tilt/Telescoping Steering Column
- Manual w/Tilt Front Head Restraints and Manual Adjustable Rear Head Restraints
- Memory Settings -inc: Door Mirrors and Pedals
- Mini Overhead Console w/Storage, 3 12V DC Power Outlets and 2 120V AC Power Outlets
- Mobile Hotspot Internet Access- Outside Temp Gauge- Passenger Seat
- Perimeter Alarm- Pickup Cargo Box Lights
- Power 1st Row Windows w/Driver And Passenger 1-Touch Up/Down
- Power Adjustable Pedals- Power Door Locks w/Autolock Feature- Power Rear Windows
- Proximity Key For Doors And Push Button Start - Rear Cupholder
- Redundant Digital Speedometer
- Remote Keyless Entry w/Integrated Key Transmitter, Illuminated Entry and Panic Button
- Remote Releases -Inc: Keyfob Cargo Access
- SYNC 4 w/Enhanced Voice Recognition -inc: 12" LCD capacitive touchscreen w/swipe capability, information on demand panel, wireless phone connection, cloud connected, AppLink w/App catalog, 911 Assist, Apple CarPlay and Android Auto compatibility, digital owners manual, conversational voice command recognition and connected navigation, Note: Navigation services require SYNC 4 and FordPass Connect (optional on select

vehicles), complimentary connect service and the FordPass app (see FordPass Terms for details), Customer receives a complimentary 90-day trial of navigation services when an eligible vehicle is added to a member's FordPass account. Trial period begins on the new vehicle warranty start date. At the end of the complimentary period, navigation service will terminate. Connected service and features depend on compatible AT&T network availability. Evolving technology/cellular networks/vehicle capability may limit functionality and prevent operation of connected features. FordPass App, compatible w/select smartphone platforms, is available via a download. Message and data rates may apply

- Seats w/Leatherette Back Material- Securilock Anti-Theft Ignition (pats) Immobilizer
- Smart Device Remote Engine Start- Systems Monitor- Trip Computer

## Mechanical

- 1400# Maximum Payload- 3 Skid Plates- 36 Gal. Fuel Tank
- 4-Wheel Disc Brakes w/4-Wheel ABS, Front And Rear Vented Discs, Brake Assist, Hill Descent Control, Hill Hold Control and Electric Parking Brake
- 50 State Emissions
- 80-Amp/Hr 800CCA Maintenance-Free Battery w/Run Down Protection
- Auto Locking Hubs
- Automatic w/Driver Control Ride Control Off-Road Adaptive Suspension
- Class IV Towing Equipment -inc: Hitch and Trailer Sway Control
- Double Wishbone Front Suspension w/Coil Springs
- Dual Stainless Steel Exhaust w/Black Tailpipe Finisher
- Electric Power-Assist Speed-Sensing Steering- Electronic Locking w/4.10 Axle Ratio
- Electronic Transfer Case- Engine Oil Cooler
- Engine: 3.5L V6 EcoBoost High Output w/o 52X-inc: auto start-stop technology
- Fox Racing Brand Name Shock Absorbers- Front HD Anti-Roll Bar
- GVWR: 7,050 lbs Payload Package- HD 240 Amp Alternator
- Part And Full-Time Four-Wheel Drive- Solid Axle Rear Suspension w/Coil Springs
- Trailer Wiring Harness- Transmission w/Oil Cooler
- Transmission: Electronic 10-Speed Automatic -inc: terrain management modes: normal, sport, tow-haul, slippery, rock crawl, off-road and baja mode
- Upfitter Switches

## Option Packages

### Factory Installed Packages

ENGINE: 3.5L V6 ECOBOOST HIGH OUTPUT

TRANSMISSION: ELECTRONIC 10-SPEED AUTOMATIC

-inc: terrain management modes: normal, sport, tow-haul, slippery, rock crawl, off-road and baja mode

AUTO START-STOP REMOVAL  
-\$50

BLUE INTERIOR PACKAGE  
\$2,395

EQUIPMENT GROUP 801A HIGH  
\$4,755

-inc: Wireless Charging Pad, Rain-Sensing Wipers, Power Tilt/Telescoping Steering Column w/Memory, Torsen Package, Front-Axle w/Torsen Differential, Rigid LED Fog Lamp, Convenience Package, Interior Work Surface, Connected Built-In Navigation. Navigation services require SYNC4 and FordPass Connect (optional on select vehicles), complimentary connect service and the FordPass app (see FordPass Terms for details). Eligible vehicles receive a complimentary 90-day trial of navigation services that begins on the new vehicle warranty start date. Customers must unlock the navigation service trial by activating the eligible vehicle w/a FordPass member

account. If not subscribed by the end of the complimentary period, the navigation service will terminate. Connected service and features depend on compatible AT&T network availability. Evolving technology/cellular networks/vehicle capability may limit functionality and prevent operation of connected features, FordPass App.

-  
OXFORD WHITE

-  
Option Packages Total  
\$7,100

---

Texas Vehicle Exchange

[tveauto.com](http://tveauto.com)

972-242-5350

1724 Luna Road

Carrollton, TX 75006

© 2023 AutoRevo - All rights reserved. - Powered by [AutoRevo](#)