



2016 Chevrolet Suburban LTZ

Our Price \$25,995

View this vehicle on our website at dakotamotor.com



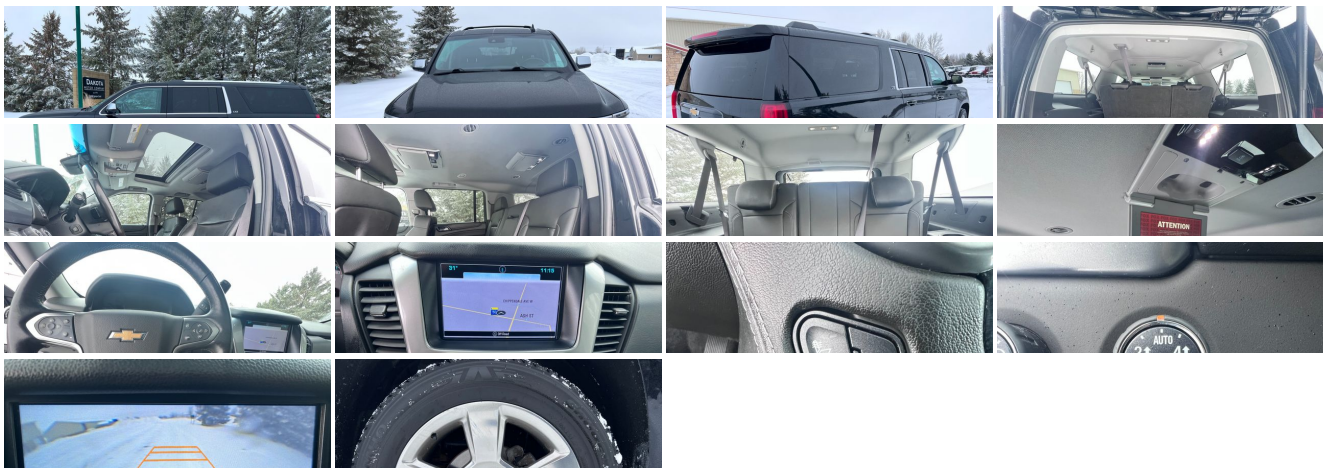
(651) 460-6655

22098 Canton Court, Farmington, MN 55024

Photos

Details

Contact



Specifications:

Year:	2016
VIN:	1GNSKJKC1GR459423
Make:	Chevrolet
Model/Trim:	Suburban LTZ
Condition:	Pre-Owned
Body:	SUV
Exterior:	Black
Engine:	ENGINE, 5.3L V8 ECOTEC3 WITH ACTIVE FUEL MANAGEMENT, DIRECT INJECTION AND VARIABLE VALVE TIMING
Interior:	Black Leather
Mileage:	135,943
Drivetrain:	4 Wheel Drive
Economy:	City 15 / Highway 22

Vehicle Description

LEATHER!!MOONROOF!!THIRD ROW SEATING!!NAVIGATION!!DVD!!LOW PRICE!!!4X4!!CALL 651-460-6655

Check out our full line of inventory at DAKOTAMOTOR.COM

Call us anytime and ask for Bart or David and we will be happy to assist you. For your convenience please call before you come to be certain of availability. Full financing available. All of our vehicles have been checked by our in house service department. All of our vehicles are clean title and have actual miles. Enjoy our low overhead low price philosophy. We buy in bulk and sell at wholesale cost to save you the new car store markup!! 30years in wholesaling makes us retailing's smartest choice for a price savvy saver.

Installed Options

Interior

- Console, floor with storage area, cup holders and auxiliary jack
- Cruise control, electronic with set and resume speed (Not included when (Y66) Adaptive Cruise Control is ordered.)
- Door locks, power programmable with lockout protection
- Floor mats, color-keyed carpeted first and second row, removable
- Memory settings recalls presets for driver power seat adjuster and pedals (Also includes memory presets for outside rearview mirrors and power steering column.)
- OnStar Basic plan for 5 years including limited RemoteLink mobile app services, Advanced Diagnostics and Dealer Maintenance Notification (Basic Plan available for 5 years from the date of vehicle delivery, and is transferable. Does not include Emergency, Security or Navigation services.)
- Passive Entry System includes (AQQ) Remote Keyless Entry
- Seat adjuster, front passenger 6-way power- Seat trim, perforated leather-appointed
- Seats, front bucket with Perforated leather-appointed heated and cooled seat cushions 12-way power driver and passenger seat includes 6-way power cushions, driver seat 2-position memory, 4-way power lumbar control and power recline
- Seats, heated and cooled driver and front passenger
- Seats, second row bucket, power release- Seats, third row 60/40 split-bench, power fold
- Steering wheel controls, mounted audio and cruise controls includes Driver Information Center controls
- Theft deterrent, electrical, unauthorized entry- Assist handles, all seats
- Cargo management system- Cargo net
- Climate control, tri-zone automatic with individual climate settings for driver, right-front passenger and rear passengers
- Conversation mirror (Deleted when (UTT) Theft Protection Package is ordered.)
- Defogger, rear-window electric
- Display, driver instrument information enhanced, multi-color 4.2" diagonal (Not available with (UV6) Head Up Display.)
- Floor covering, color-keyed carpeting
- Lighting, interior with dome light, driver- and passenger-side door switch with delayed entry feature, cargo lights, door handle or Remote Keyless Entry-activated illuminated entry and map lights in front and second seat positions
- Mirror, inside rearview auto-dimming
- Pedals, power-adjustable for accelerator and brake- Power outlet, 110-volt

Option Packages

Factory Installed Packages

ENGINE, 5.3L V8 ECOTEC3 WITH ACTIVE FUEL MANAGEMENT, DIRECT INJECTION AND VARIABLE VALVE TIMING

includes aluminum block construction (355 hp
[265 kW] @ 5600 rpm, 383 lb-ft of torque [518
N-m] @ 4100 rpm)

- Pedals, power-adjustable for accelerator and brake - Power outlet, 110-volt
- Power outlets, 5 auxiliary, 12-volt includes outlets in the instrument panel, console, back of console, 1 in 3rd row and 1 in cargo area
- Remote vehicle start - Seats, heated second row
- Steering column, power tilt and telescopic
- Steering wheel, heated, leather-wrapped and color-keyed with theft-deterrent locking feature
- Universal Home Remote includes garage door opener, programmable
- Windows, power, with Express-Down and Express-Up on front doors and lock out features

Exterior

- Assist steps, Black (Deleted when (RVQ) Assist step kit, Black, LPO or (VXH) Assist step kit, Chrome, LPO are ordered.)
- Headlamps, IntelliBeam, automatic high beam on/off
- Tire, spare P265/70R17 all-season, blackwall- Tires, P275/55R20 all-season, blackwall
- Wheel, full-size spare, 17" (43.2 cm) steel
- Wheels, 20" x 9" (50.8 cm x 22.9 cm) polished-aluminum - Fascia, front body-color
- Fascia, rear color-keyed- Fog lamps- Glass, deep-tinted
- Headlamps, high intensity discharge- Liftgate, hands free, power
- Luggage rack side rails, roof-mounted (Includes bright accent.)
- Mirrors, outside heated power-adjustable, power-folding and driver-side auto-dimming with integrated turn signal indicators and ground illumination
- Moldings, body-color body-side
- Tire carrier, lockable outside spare, winch-type mounted under frame at rear
- Wiper, rear intermittent with washer- Wipers, front intermittent, Rainsense

Safety

- Console, floor with storage area, cup holders and auxiliary jack
- Cruise control, electronic with set and resume speed (Not included when (Y66) Adaptive Cruise Control is ordered.)
- Door locks, power programmable with lockout protection
- Floor mats, color-keyed carpeted first and second row, removable
- Memory settings recalls presets for driver power seat adjuster and pedals (Also includes memory presets for outside rearview mirrors and power steering column.)
- OnStar Basic plan for 5 years including limited RemoteLink mobile app services, Advanced Diagnostics and Dealer Maintenance Notification (Basic Plan available for 5 years from the date of vehicle delivery, and is transferable. Does not include Emergency, Security or Navigation services.)
- Passive Entry System includes (AQQ) Remote Keyless Entry
- Seat adjuster, front passenger 6-way power- Seat trim, perforated leather-appointed
- Seats, front bucket with Perforated leather-appointed heated and cooled seat cushions 12-way power driver and passenger seat includes 6-way power cushions, driver seat 2-position memory, 4-way power lumbar control and power recline
- Seats, heated and cooled driver and front passenger
- Seats, second row bucket, power release- Seats, third row 60/40 split-bench, power fold
- Steering wheel controls, mounted audio and cruise controls includes Driver Information Center controls
- Theft deterrent, electrical, unauthorized entry- Assist handles, all seats
- Cargo management system- Cargo net
- Climate control, tri-zone automatic with individual climate settings for driver, right-front passenger and rear passengers
- Conversation mirror (Deleted when (UTT) Theft Protection Package is ordered.)
- Defogger, rear-window electric
- Display, driver instrument information enhanced, multi-color 4.2" diagonal (Not available with (UV6) Head Up Display.)
- Floor covering, color-keyed carpeting
- Lighting, interior with dome light, driver- and passenger-side door switch with delayed entry feature, cargo lights, door handle or Remote Keyless Entry-activated illuminated entry and map lights in front and second seat positions
- Mirror, inside rearview auto-dimming
- Pedals, power-adjustable for accelerator and brake- Power outlet, 110-volt
- Power outlets, 5 auxiliary, 12-volt includes outlets in the instrument panel, console, back of console, 1 in 3rd row and 1 in cargo area
- Remote vehicle start - Seats, heated second row
- Steering column, power tilt and telescopic
- Steering wheel, heated, leather-wrapped and color-keyed with theft-deterrent locking feature
- Universal Home Remote includes garage door opener, programmable
- Windows, power, with Express-Down and Express-Up on front doors and lock out features

Mechanical

- Transmission, 6-speed automatic, electronically controlled with overdrive and tow/haul mode

- 4-wheel drive- Alternator, 150 amps
- Battery, 720 cold cranking amps with 80 amp hour rating
- Cooling, auxiliary transmission oil cooler, heavy-duty air-to-oil
- Cooling, external engine oil cooler, heavy-duty air-to-oil integral to driver side of radiator
- Differential, heavy-duty locking rear
- Engine, 5.3L V8 EcoTec3 with Active Fuel Management, Direct Injection and Variable Valve Timing includes aluminum block construction (355 hp [265 kW] @ 5600 rpm, 383 lb-ft of torque [518 N-m] @ 4100 rpm)
- GVWR, 7500 lbs. (3402 kg) (Requires 4WD model.) - Keyless start, push button
- Rear axle, 3.08 ratio (Not available with (NHT) Max Trailering Package.)
- Steering, power
- Suspension Package, Magnetic Ride Control road sensing electronically controlled shock absorbers
- Suspension, front coil-over-shock with stabilizer bar
- Suspension, rear multi-link with coil springs
- Trailering equipment includes trailering hitch platform, 7-wire harness with independent fused trailering circuits mated to a 7-way sealed connector and 2" trailering receiver
- Transfer case, active, single-speed, electronic Autotrac with rotary controls, does not include neutral. Cannot be dinghy towed (Requires 4WD model. Not available with (NHT) Max Trailering Package.)

Dakota Motor Company

Dakota Motor Company

View this car on our website at dakotamotor.com/7163102

Website: dakotamotor.com

Phone: (651) 460-6655

Map: [22098 Canton Court, Farmington, MN 55024](#)

