

2022 Ram 1500 TRX 4X4 DUPONT KEVLAR,LIFTED,BUMPERS,LED'S,20'S

View this car on our website at tveauto.com/7162006/ebrochure



Our Price **\$137,900**

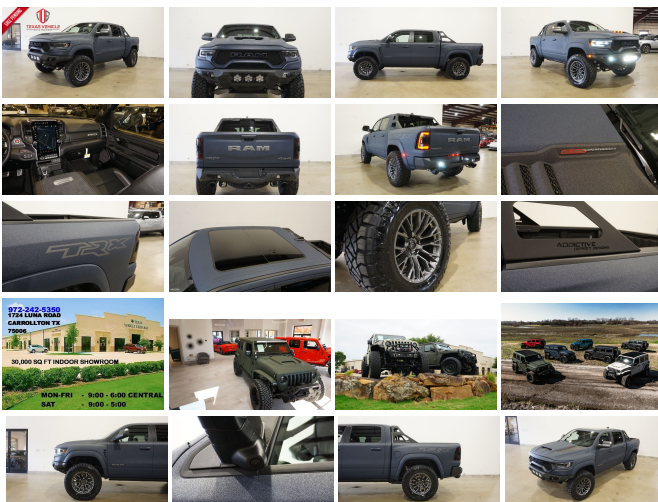
Specifications:

Year:	2022
VIN:	1C6SRFU99NN403325
Make:	Ram
Stock:	403325
Model/Trim:	1500 TRX 4X4 DUPONT KEVLAR,LIFTED,BUMPERS,LED'S,20'S
Condition:	Pre-Owned
Body:	Pickup Truck
Exterior:	Blue
Engine:	ENGINE: 6.2L SUPERCHARGED HEMI V8 SRT
Interior:	Black Leather
Transmission:	TRANSMISSION: 8-SPEED AUTOMATIC (8HP95)
Mileage:	62
Drivetrain:	4 Wheel Drive
Economy:	City 10 / Highway 14

NATION WIDE FINANCING

SUBMIT CREDIT APP [WWW.TVEAUTO.COM](https://www.tveauto.com)

OR CALL 972-242-5350



2022 RAM 1500 TRX CREW CAB 4X4, 6.2L SUPERCHARGED HEMI V8 SRT ENGINE, 8 SPEED AUTOMATIC TRANSMISSION, ONLY 62 MILES, FERRARI NART BLUE KEVLAR COATING W/BLACK LEATHER INTERIOR, CARFAX REPORTS 1 OWNER NO ACCIDENTS, NON-SMOKER, TRX LEVEL 2 EQUIPMENT GROUP, REMOTE START, CUSTOM 2" LEVEL KIT, ADDICTIVE DESERT DESIGNS BOMBER FRONT BUMPER WITH 3 RAIA DESIGNS IP68 ROUND LED LIGHTS & 2

DASH DESIGNS LEVITRONIC LED LIGHTS & 2 RIGID INDUSTRIES DUALY D2 LED LIGHTS, FRONT & REAR PARK DISTANCE SENSORS, HEAD-UP DISPLAY, DUAL-PANE PANORAMIC SUNROOF, 12.0" TOUCH SCREEN NAVIGATION, BACK-UP CAMERA, 360 VIEW CAMERAS, POWER RETRACTABLE RUNNING BOARDS, POWER WINDOWS, POWER DOOR LOCKS, POWER FOLDING TRAILER TOW HEATED MIRRORS WITH TURN SIGNALS, BLIND SPOT CONTROL, HEATED TILT/TELESCOPE STEERING WHEEL WITH AUDIO & CRUISE CONTROLS, PADDLE SHIFTERS, DUAL POWER HEATED & COOLED FRONT SEATS WITH DRIVER 2 MEMORY POSITION, POWER ADJUSTABLE PEDALS, TRACTION CONTROL, HILL DESCENT CONTROL, TRX MODE, LAUNCH MODE, TRAILER BRAKE CONTROLLER, AUXILIARY SWITCHES, ICE COLD A/C, DUAL CLIMATE CONTROL, HARMAN/KARDON HD AM/FM/SIRIUS STEREO, U-CONNECT, SELF DIMMING REAR VIEW MIRROR, HOMELINK GARAGE CONTROLS, DUAL LIGHTED VANITY MIRRORS, REAR HEATED & COOLED SEATS, REAR A/C VENTS, POWER SLIDING REAR WINDOW, ADDICTIVE DESERT DESIGNS STEALTH FIGHTER CHASE RACK, SPRAY IN BEDLINER, TINTED TAIL LIGHTS, ADDICTIVE DESERT DESIGNS BOMBER REAR BUMPER WITH 2 RIGID INDUSTRIES DUALY D2 LED LIGHTS, TOW PACKAGE WITH RECEIVER HITCH, RUBBER FLOOR MATS, OWNER'S MANUAL, 2 KEYS/2 REMOTES. 20" FUEL MATTE GUNMETAL "REBAR 6" WHEELS, FRONT TIRES ARE NITTO RIDGE GRAPPLER 37X13.50R/20, REAR TIRES ARE NITTO RIDGE GRAPPLER 37X13.50R/20. RUNS AND DRIVES GREAT. GIVE US A CALL @ 972-242-5350 OR STOP BY FOR A TEST DRIVE. 1724 LUNA RD IN CARROLLTON - 2 MILES NORTH OF 635. CLICK ON CARFAX ICON TO VIEW A FULL REPORT AT NO COST TO YOU.

Our Location :



2022 Ram 1500 TRX 4X4 DUPONT KEVLAR,LIFTED,BUMPERS,LED'S,20'S

Texas Vehicle Exchange - 972-242-5350 - View this car on our website at veauto.com/7162006/ebrochure

Installed Options

Interior

- 8-Way Power Driver Seat -inc: Power Recline, Height Adjustment, Fore/Aft Movement and Cushion Tilt
- Cloth/Vinyl Bucket Seats- Day-Night Auto-Dimming Rearview Mirror
- FOB Controls -inc: Remote Engine Start
- Gauges -inc: Speedometer, Odometer, Voltmeter, Oil Pressure, Engine Coolant Temp, Tachometer, Inclinator, Altimeter, Oil Temperature, Transmission Fluid Temp, Engine Hour Meter, Trip Odometer and Trip Computer
- Passenger Visor Vanity Mirror w/Passenger Illumination
- Power 1st Row Windows w/Driver And Passenger 1-Touch Up/Down
- Power Door Locks w/Autolock Feature- Power Rear Windows
- Proximity Key For Push Button Start Only - Rear 60/40 Folding Seat
- Remote Keyless Entry w/Integrated Key Transmitter, Illuminated Entry and Panic Button
- Seats w/Cloth Back Material- Smart Device Remote Engine Start
- Sport Leather Steering Wheel- Trip Computer- 2 12V DC Power Outlets
- 2 12V DC Power Outlets and 2 120V AC Power Outlets - 4 Way Front Headrests
- 4-Way Passenger Seat -inc: Manual Recline and Fore/Aft Movement
- 4G LTE Wi-Fi Hot Spot Mobile Hotspot Internet Access- Air Filtration
- Analog Appearance- Bucket Seats- Compass- Cruise Control w/Steering Wheel Controls
- Delayed Accessory Power- Dual Zone Front Automatic Air Conditioning w/Front Infrared
- Fade-To-Off Interior Lighting- Front Center Armrest w/Storage and Rear Center Armrest
- Front Facing Cloth/Vinyl Rear Seat- Front Map Lights- Front Seat Back Map Pockets
- Full Carpet Floor Covering MOPAR -inc: Vinyl/Rubber Front And Rear Floor Mats
- Full Cloth Headliner
- Full Floor Console w/Covered Storage, Mini Overhead Console w/Storage, 2 12V DC Power Outlets and 2 120V AC Power Outlets
- HVAC -inc: Underseat Ducts and Console Ducts - Illuminated Front Cupholder
- Illuminated Locking Glove Box

Option Packages

Factory Installed Packages

- ENGINE: 6.2L SUPERCHARGED HEMI V8 SRT
- TRANSMISSION: 8-SPEED AUTOMATIC (8HP95)
- BLACK POWER-FOLD TRAILER TOW MIRRORS
 - inc: Mirror-Mounted Aux Reverse Lamps, Exterior Mirrors w/Memory, Mirror Clearance/Running Lights, Trailer Tow Mirrors
 - \$445**
- DUAL-PANE PANORAMIC SUNROOF
 - inc: Dome Dual LED Reading Lamp
 - \$1,495**
- TRX LEVEL 2 EQUIPMENT GROUP
 - inc: Full Length Premium Upgraded Floor Console, Rear Window Defroster, Surround View Camera System, Blind Spot & Cross Path Detection, Rain Sensitive Windshield Wipers, LED CHMSL Lamp, ParkSense Front/Rear Park Assist w/Stop, Power Adjustable Pedals w/Memory, Pick-Up Box Lighting, Body Color Door Handles, MOPAR Bright Pedal Kit, IP LED Ambient Light Pipe, Rear Underseat Compartment Storage, Trailer Brake Control, Head Up Display, Heated Second Row Seats, Heated Steering Wheel, Leather/Suede Flat-Bottom Steering Wheel, Wireless Charging Pad, Driver/Passenger Wrapped Assist Handles, Ventilated Rear Seats, Rear 60/40 Folding Split
 - \$10,295**

- Instrument Panel Bin, Dashboard Storage, Interior Concealed Storage, Driver / Passenger And Rear Door Bins
- Interior Trim -inc: Deluxe Sound Insulation, Metal-Look/Piano Black Instrument Panel Insert, Piano Black Door Panel Insert, Metal-Look Console Insert and Aluminum/Metal-Look Interior Accents
- Leather/Metal-Look Gear Shifter Material- Manual Adjustable Rear Head Restraints
- Manual Tilt/Telescoping Steering Column- Outside Temp Gauge- Perimeter Alarm
- Pickup Cargo Box Lights- Power 4-Way Driver Lumbar Adjust- Rear Cupholder
- Redundant Digital Speedometer- Sentry Key Immobilizer- Smart Device Integration
- Systems Monitor- Valet Function- Vinyl Door Trim Insert

Exterior

- Black Front Bumper w/Metal-Look Rub Strip/Fascia Accent and 2 Tow Hooks
- Black Rear Step Bumper w/1 Tow Hook - Exterior Mirrors w/Heating Element
- Exterior Mirrors w/Supplemental Signals
- Power Side Mirrors w/Driver Auto Dimming and Convex Spotter - Power-Folding Mirrors
- Tailgate/Rear Door Lock Included w/Power Door Locks - Variable Intermittent Wipers
- Wheels: 18" x 9" Black Paint/Polish Aluminum - Aluminum Spare Wheel
- Auto On/Off Aero-Composite Led Low/High Beam Daytime Running Auto High-Beam Headlamps w/Delay-Off
- Black Door Handles- Black Exterior Mirrors- Black Fender Flares- Black Grille
- Black Side Windows Trim- Cab Clearance Lights- Cargo Lamp w/High Mount Stop Light
- Clearcoat Paint w/Decal- Deep Tinted Glass- Exterior Mirrors Courtesy Lamps
- Front Fog Lamps- Full-Size Spare Tire Stored Underbody w/Crankdown
- Galvanized Steel/Aluminum Panels- Headlights-Automatic Highbeams- LED Brakelights
- Laminated Glass- Power Rear Window- Regular Box Style- Tailgate Rear Cargo Access
- Tires: LT325/65R18D All Terrain

Safety

- 8-Way Power Driver Seat -inc: Power Recline, Height Adjustment, Fore/Aft Movement and Cushion Tilt
- Cloth/Vinyl Bucket Seats- Day-Night Auto-Dimming Rearview Mirror
- FOB Controls -inc: Remote Engine Start
- Gauges -inc: Speedometer, Odometer, Voltmeter, Oil Pressure, Engine Coolant Temp, Tachometer, Inclinometer, Altimeter, Oil Temperature, Transmission Fluid Temp, Engine Hour Meter, Trip Odometer and Trip Computer
- Passenger Visor Vanity Mirror w/Passenger Illumination
- Power 1st Row Windows w/Driver And Passenger 1-Touch Up/Down
- Power Door Locks w/Autolock Feature- Power Rear Windows
- Proximity Key For Push Button Start Only - Rear 60/40 Folding Seat
- Remote Keyless Entry w/Integrated Key Transmitter, Illuminated Entry and Panic Button
- Seats w/Cloth Back Material- Smart Device Remote Engine Start
- Sport Leather Steering Wheel- Trip Computer- 2 12V DC Power Outlets
- 2 12V DC Power Outlets and 2 120V AC Power Outlets - 4 Way Front Headrests
- 4-Way Passenger Seat -inc: Manual Recline and Fore/Aft Movement
- 4G LTE Wi-Fi Hot Spot Mobile Hotspot Internet Access- Air Filtration
- Analog Appearance- Bucket Seats- Compass- Cruise Control w/Steering Wheel Controls
- Delayed Accessory Power- Dual Zone Front Automatic Air Conditioning w/Front Infrared
- Fade-To-Off Interior Lighting- Front Center Armrest w/Storage and Rear Center Armrest
- Front Facing Cloth/Vinyl Rear Seat- Front Map Lights- Front Seat Back Map Pockets
- Full Carpet Floor Covering MOPAR -inc: Vinyl/Rubber Front And Rear Floor Mats
- Full Cloth Headliner
- Full Floor Console w/Covered Storage, Mini Overhead Console w/Storage, 2 12V DC Power Outlets and 2 120V AC Power Outlets
- HVAC -inc: Underseat Ducts and Console Ducts - Illuminated Front Cupholder
- Illuminated Locking Glove Box
- Instrument Panel Bin, Dashboard Storage, Interior Concealed Storage, Driver / Passenger And Rear Door Bins
- Interior Trim -inc: Deluxe Sound Insulation, Metal-Look/Piano Black Instrument Panel Insert, Piano Black Door Panel Insert, Metal-Look Console Insert and Aluminum/Metal-Look Interior Accents
- Leather/Metal-Look Gear Shifter Material- Manual Adjustable Rear Head Restraints
- Manual Tilt/Telescoping Steering Column- Outside Temp Gauge- Perimeter Alarm
- Pickup Cargo Box Lights- Power 4-Way Driver Lumbar Adjust- Rear Cupholder
- Redundant Digital Speedometer- Sentry Key Immobilizer- Smart Device Integration
- Systems Monitor- Valet Function- Vinyl Door Trim Insert

Mechanical

- 1310# Maximum Payload- 250 Amp Alternator- 3.55 Rear Axle Ratio- 33 Gal. Fuel Tank
- 4-Wheel Disc Brakes w/4-Wheel ABS, Front And Rear Vented Discs, Brake Assist, Hill Descent Control, Hill Hold Control and Electric Parking Brake
- 5 Skid Plates- 800CCA Maintenance-Free Battery- Auto Locking Hubs
- Automatic Full-Time Four-Wheel Drive

Ventilated Front Seats, Rear 60/40 Folding Seat, Recline Seat, Ventilated Front Seats, Remote Tailgate Release, harman/kardon 19 Speaker Premium Sound, Premium Wrapped IP Bezel, 2-Door Passive Entry, Front Door Locks, Universal Garage Door Opener, Exterior Mirrors w/Memory, Luxury Front Door Trim Panel, Driver Seat Memory, Front Door Accent Lighting, Power 8-Way Driver & Passenger Seats,

QUICK ORDER PACKAGE 29Y

-inc: Engine: 6.2L Supercharged HEMI V8 SRT,
Transmission: 8-Speed Automatic (8HP95)

Option Packages Total

\$12,235

- Automatic Full-Time Four-Wheel Drive
 - Automatic w/Driver Control Ride Control Off-Road Adaptive Suspension
 - Bilstein Brand Name Shock Absorbers
 - Class IV Towing Equipment -inc: Hitch and Trailer Sway Control
 - Driver Selectable Rear Locking Differential
 - Dual Stainless Steel Exhaust w/Black Tailpipe Finisher- Electric Power-Assist Steering
 - Electronic Transfer Case- Engine Oil Cooler- Engine: 6.2L Supercharged HEMI V8 SRT
 - Federal Emissions- Front Anti-Roll Bar- GVWR: 7,800 lbs
 - Short And Long Arm Front Suspension w/Coil Springs
 - Solid Axle Rear Suspension w/Coil Springs- Trailer Wiring Harness
 - Transmission w/Driver Selectable Mode and Sequential Shift Control w/Steering Wheel Controls
 - Transmission: 8-Speed Automatic (8HP95)
-

Texas Vehicle Exchange

tveauto.com

972-242-5350

1724 Luna Road

Carrollton, TX 75006

© 2024 AutoRevo - All rights reserved. - Powered by [AutoRevo](#)