

2022 Ford F-150 King Ranch 4X4 HYBRID,LIFTED,ROOF,NAV,FUEL WHLS

View this car on our website at tveauto.com/7159230/ebrochure



Our Price **\$88,900**

Specifications:

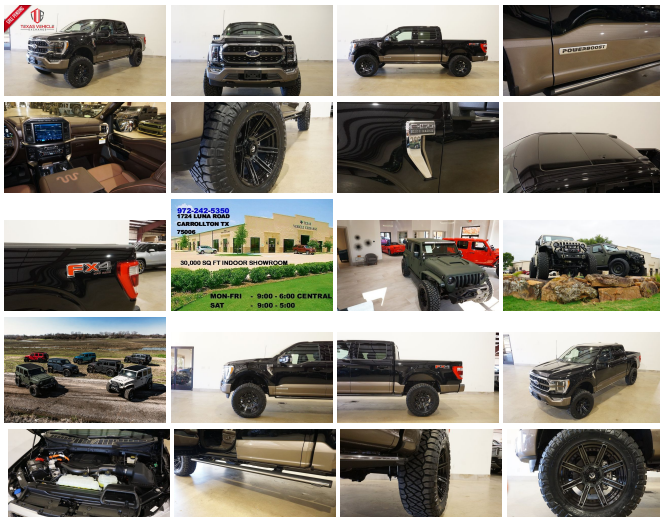
Year:	2022
VIN:	1FTFW1ED5NFC41535
Make:	Ford
Stock:	C41535
Model/Trim:	F-150 King Ranch 4X4 HYBRID,LIFTED,ROOF,NAV,FUEL WHLS
Condition:	Pre-Owned
Body:	Pickup Truck
Exterior:	Agate Black Metallic
Engine:	ENGINE: 3.5L POWERBOOST FULL- HYBRID V6
Interior:	Java Leather
Transmission:	TRANSMISSION: HYBRID ELECTRONIC 10-SPEED AUTOMATIC
Mileage:	32
Drivetrain:	4 Wheel Drive
Economy:	City 16 / Highway 22

NATION WIDE FINANCING

SUBMIT CREDIT APP [WWW.TVEAUTO.COM](https://www.tveauto.com)

OR CALL 972-242-5350

2022 FORD F150 SUPER CREW KING RANCH 4X4, 3.5L POWERBOOST FULL HYBRID V6 ENGINE, HYBRID ELECTRONIC 10 SPEED AUTOMATIC TRANSMISSION, ONLY 32 MILES, AGATE BLACK METALLIC W/JAVA LEATHER INTERIOR, CARFAX REPORTS 1 OWNER NO ACCIDENTS, NON-SMOKER, REMOTE START, FOGLIGHTS, PRO COMP 6" SUSPENSION LIFT KIT, FRONT & REAR PARK DISTANCE SENSORS, TWIN PANEL MOONROOF, 12"



TOUCH SCREEN NAVIGATION, BACK-UP CAMERA, POWER RETRACTABLE RUNNING BOARDS, POWER WINDOWS, POWER DOOR LOCKS, POWER FOLDING HEATED MIRRORS WITH TURN SIGNALS, BLIND SPOT CONTROL, POWER & HEATED TILT/TELESCOPE STEERING WHEEL WITH AUDIO & CRUISE CONTROLS, DUAL POWER HEATED & COOLED FRONT SEATS WITH DRIVER 3 MEMORY POSITION, POWER ADJUSTABLE PEDALS, TRACTION CONTROL, LANE KEEPING SYSTEM, HILL DESCENT CONTROL, DRIVE MODE CONTROL, PRO TRAILER BACK-UP ASSIST, TRAILER BRAKE CONTROLLER, ICE COLD A/C, DUAL CLIMATE CONTROL, BANG & OLUFSEN HD AM/FM/SIRIUS STEREO, MICROSOFT SYNC VOICE ACTIVATED SYSTEM, SELF DIMMING REAR VIEW MIRROR, HOMELINK GARAGE CONTROLS, DUAL LIGHTED VANITY MIRRORS, REAR HEATED SEATS, REAR A/C VENTS, POWER SLIDING REAR WINDOW, TAILGATE STEP, TOW PACKAGE WITH RECEIVER HITCH, RUBBER FLOOR MATS, OWNER'S MANUAL, 2 KEYS/2 REMOTES, 20" FUEL GLOSS BLACK/BRUSHED GLOSS DDT "ROGUE" WHEELS, FRONT TIRES ARE BRAND NEW NITTO RIDGE GRAPPLER 35X12.50R/20, REAR TIRES ARE BRAND NEW NITTO RIDGE GRAPPLER 35X12.50R/20. RUNS AND DRIVES GREAT. GIVE US A CALL @ 972-242-5350 OR STOP BY FOR A TEST DRIVE. 1724 LUNA RD IN CARROLLTON - 2 MILES NORTH OF 635. CLICK ON CARFAX ICON TO VIEW A FULL REPORT AT NO COST TO YOU.

2022 Ford F-150 King Ranch 4X4 HYBRID,LIFTED,ROOF,NAV,FUEL WHLS

Texas Vehicle Exchange - 972-242-5350 - View this car on our website at veauto.com/7159230/ebrochure

Our Location :



2022 Ford F-150 King Ranch 4X4 HYBRID,LIFTED,ROOF,NAV,FUEL WHLS

Texas Vehicle Exchange - 972-242-5350 - View this car on our website at veauto.com/7159230/ebrochure

Installed Options

Interior

- 1 12V DC Power Outlet- 1 12V DC Power Outlet and 3 120V AC Power Outlets
- 2 Seatback Storage Pockets
- 60-40 Folding Split-Bench Front Facing Heated Fold-Up Cushion Rear Seat - Air Filtration
- Compass- Cruise Control w/Steering Wheel Controls
- Day-Night Auto-Dimming Rearview Mirror- Delayed Accessory Power
- Digital/Analog Appearance- Distance Pacing w/Traffic Stop-Go
- Driver And Passenger Visor Vanity Mirrors w/Driver And Passenger Illumination
- Driver Seat- Dual Zone Front Automatic Air Conditioning
- FOB Controls -inc: Cargo Access and Remote Engine Start- Fade-To-Off Interior Lighting
- FordPass Connect 4G Mobile Hotspot Internet Access- Front And Rear Map Lights
- Front Center Armrest and Rear Center Armrest
- Full Carpet Floor Covering -inc: Carpet Front And Rear Floor Mats - Full Cloth Headliner
- Garage Door Transmitter
- Gauges -inc: Speedometer, Odometer, Voltmeter, Oil Pressure, Engine Coolant Temp, Tachometer, Transmission Fluid Temp, Trip Odometer and Trip Computer
- HVAC -inc: Underseat Ducts and Console Ducts
- Heated Leather/Metal-Look Steering Wheel w/Auto Tilt-Away- Illuminated Front Cupholder
- Instrument Panel Bin, Dashboard Storage, Interior Concealed Storage, Driver / Passenger And Rear Door Bins and Locking 2nd Row Underseat Storage
- Interior Trim -inc: Genuine Wood/Metal-Look Instrument Panel Insert, Cabback Insulator, Genuine Wood/Metal-Look Door Panel Insert, Genuine Wood/Metal-Look Console Insert and Chrome/Metal-Look Interior Accents
- Keypad
- King Ranch Leather Bucket Seats -inc: 4-way adjustable driver/passenger headrests, heated and ventilated 10-way power driver and passenger w/power lumbar, memory driver's seat, flow-through console and floor shifter
- Leather/Chrome Gear Shifter Material- Locking Glove Box
- Manual Adjustable Rear Head Restraints
- Memory Settings -inc: Door Mirrors, Steering Wheel and Pedals
- Mini Overhead Console w/Storage. 1 12V DC Power Outlet and 3 120V AC Power Outlets

- Outside Temp Gauge- Passenger Seat- Perimeter Alarm- Pickup Cargo Box Lights
- Power 1st Row Windows w/Driver And Passenger 1-Touch Up/Down
- Power Adjustable Pedals- Power Door Locks w/Autolock Feature- Power Rear Windows
- Power Tilt/Telescoping Steering Column- Proximity Key For Doors And Push Button Start
- Rear Cupholder- Redundant Digital Speedometer
- Remote Keyless Entry w/Integrated Key Transmitter, Illuminated Entry and Panic Button
- Remote Releases -Inc: Keyfob Cargo Access
- SYNC 4 w/Enhanced Voice Recognition -inc: 12" LCD capacitive touchscreen w/swipe capability, information on demand panel, wireless phone connection, cloud connected, AppLink w/App catalog, 911 Assist, Apple CarPlay and Android Auto compatibility, digital owners manual, conversational voice command recognition and connected navigation, Note: Navigation services require SYNC@4 and FordPass Connect (optional on select vehicles), complimentary connect service and the FordPass app (see FordPass Terms for details), Customer receives a complimentary 90-day trial of navigation services when an eligible vehicle is added to a member's FordPass account, Trial period begins on the new vehicle warranty start date, At the end of the complimentary period, navigation service will terminate, Connected service and features depend on compatible AT&T network availability, Evolving technology/cellular networks/vehicle capability may limit functionality and prevent operation of connected features, FordPass App, compatible w/select smartphone platforms, is available via a download, Message and data rates may apply
- Seats w/Leatherette Back Material- Securilock Anti-Theft Ignition (pats) Immobilizer
- Smart Device Remote Engine Start- Trip Computer

Exterior

- Aluminum Panels- Black Side Windows Trim- Body-Colored Door Handles
- Body-Colored Power Heated Side Mirrors w/Driver Auto Dimming, Power Folding and Turn Signal Indicator
- Cargo Lamp w/High Mount Stop Light- Clearcoat Paint
- Colored Grille w/Chrome Surround- Deep Tinted Glass
- Ford Co-Pilot360 - Autolamp Auto On/Off Projector Beam Led Low/High Beam Directionally Adaptive Auto High-Beam Daytime Running Lights Preference Setting Headlamps w/Delay-Off
- Front Bumper w/2 Tow Hooks- Front Fog Lamps
- Full-Size Spare Tire Stored Underbody w/Crankdown- Headlights-Automatic Highbeams
- LED Brakelights- Perimeter/Approach Lights- Power Rear Window w/Defroster
- Rain Detecting Variable Intermittent Wipers- Regular Box Style- Running Boards
- Steel Spare Wheel- Step Bumper- Tailgate Rear Cargo Access
- Tailgate/Rear Door Lock Included w/Power Door Locks- Tires: 275/65R18 BSW A/T
- Wheels: 18" Machined-Aluminum -inc: magnetic painted pockets and Caribou wheel ornaments w/King Ranch logo

Safety

- 1 12V DC Power Outlet- 1 12V DC Power Outlet and 3 120V AC Power Outlets
- 2 Seatback Storage Pockets
- 60-40 Folding Split-Bench Front Facing Heated Fold-Up Cushion Rear Seat - Air Filtration
- Compass- Cruise Control w/Steering Wheel Controls
- Day-Night Auto-Dimming Rearview Mirror- Delayed Accessory Power
- Digital/Analog Appearance- Distance Pacing w/Traffic Stop-Go
- Driver And Passenger Visor Vanity Mirrors w/Driver And Passenger Illumination
- Driver Seat- Dual Zone Front Automatic Air Conditioning
- FOB Controls -inc: Cargo Access and Remote Engine Start- Fade-To-Off Interior Lighting
- FordPass Connect 4G Mobile Hotspot Internet Access- Front And Rear Map Lights
- Front Center Armrest and Rear Center Armrest
- Full Carpet Floor Covering -inc: Carpet Front And Rear Floor Mats - Full Cloth Headliner
- Garage Door Transmitter
- Gauges -inc: Speedometer, Odometer, Voltmeter, Oil Pressure, Engine Coolant Temp, Tachometer, Transmission Fluid Temp, Trip Odometer and Trip Computer
- HVAC -inc: Underseat Ducts and Console Ducts
- Heated Leather/Metal-Look Steering Wheel w/Auto Tilt-Away- Illuminated Front Cupholder
- Instrument Panel Bin, Dashboard Storage, Interior Concealed Storage, Driver / Passenger And Rear Door Bins and Locking 2nd Row Underseat Storage
- Interior Trim -inc: Genuine Wood/Metal-Look Instrument Panel Insert, Cabback Insulator, Genuine Wood/Metal-Look Door Panel Insert, Genuine Wood/Metal-Look Console Insert and Chrome/Metal-Look Interior Accents
- Keypad
- King Ranch Leather Bucket Seats -inc: 4-way adjustable driver/passenger headrests, heated and ventilated 10-way power driver and passenger w/power lumbar, memory driver's seat, flow-through console and floor shifter
- Leather/Chrome Gear Shifter Material- Locking Glove Box
- Manual Adjustable Rear Head Restraints
- Memory Settings -inc: Door Mirrors, Steering Wheel and Pedals
- Mini Overhead Console w/Storage, 1 12V DC Power Outlet and 3 120V AC Power Outlets
- Outside Temp Gauge- Passenger Seat- Perimeter Alarm- Pickup Cargo Box Lights
- Power 1st Row Windows w/Driver And Passenger 1-Touch Up/Down
- Power Adjustable Pedals- Power Door Locks w/Autolock Feature- Power Rear Windows

- Power Tilt/Telescoping Steering Column- Proximity Key For Doors And Push Button Start
- Rear Cupholder- Redundant Digital Speedometer
- Remote Keyless Entry w/Integrated Key Transmitter, Illuminated Entry and Panic Button
- Remote Releases -Inc: Keyfob Cargo Access
- SYNC 4 w/Enhanced Voice Recognition -inc: 12" LCD capacitive touchscreen w/swipe capability, information on demand panel, wireless phone connection, cloud connected, Applink w/App catalog, 911 Assist, Apple CarPlay and Android Auto compatibility, digital owners manual, conversational voice command recognition and connected navigation, Note: Navigation services require SYNC@4 and FordPass Connect (optional on select vehicles), complimentary connect service and the FordPass app (see FordPass Terms for details). Customer receives a complimentary 90-day trial of navigation services when an eligible vehicle is added to a member's FordPass account. Trial period begins on the new vehicle warranty start date, At the end of the complimentary period, navigation service will terminate, Connected service and features depend on compatible AT&T network availability, Evolving technology/cellular networks/vehicle capability may limit functionality and prevent operation of connected features, FordPass App, compatible w/select smartphone platforms, is available via a download, Message and data rates may apply
- Seats w/Leatherette Back Material- Securilock Anti-Theft Ignition (pats) Immobilizer
- Smart Device Remote Engine Start- Trip Computer

Mechanical

- 200 Amp Alternator- 2135# Maximum Payload- 26 Gal. Fuel Tank- 3.31 Axle Ratio
- 4-Wheel Disc Brakes w/4-Wheel ABS, Front And Rear Vented Discs, Brake Assist, Hill Hold Control and Electric Parking Brake
- 50 State Emissions
- 70-Amp/Hr 610CCA Maintenance-Free Battery w/Run Down Protection
- Auto Locking Hubs- Automatic Full-Time Four-Wheel Drive
- Class IV Trailer Hitch Receiver -inc: towing capability up to TBD lbs, on 3.3L V6 PFDI engine (99B) and 2.7L EcoBoost engine (99P) or up to TBD lbs, on 3.5L EcoBoost engine (998) and 5.0L V8 engine (995), 7/4-pin connector, class IV trailer hitch receiver, smart trailer tow connector (BLIS w/trailer tow coverage where BLIS is available) Ordering the Trailer Tow Package does not include Integrated Brake Controller (67T). Integrated Brake Controller (67T) is a standalone option and must be ordered separately.
- Double Wishbone Front Suspension w/Coil Springs
- Electric Power-Assist Speed-Sensing Steering- Electronic Transfer Case
- Engine: 5.0L V8 w/o 52X-inc: auto start-stop technology and flex-fuel capability w/52X-inc: flex-fuel capability
- Front Anti-Roll Bar- GVWR: 7,050 lbs Payload Package- HD Shock Absorbers
- Integrated Trailer Brake Controller
- Single Stainless Steel Exhaust w/Chrome Tailpipe Finisher
- Solid Axle Rear Suspension w/Leaf Springs- Towing Equipment -inc: Trailer Sway Control
- Transmission: Electronic 10-Speed Automatic -inc: selectable drive modes: normal, ECO, sport, tow/haul, slippery, deep snow/sand and mud/rut

Option Packages

Factory Installed Packages

ENGINE: 3.5L POWERBOOST FULL-HYBRID V6

-inc: Electronic Locking w/3.73 Axle Ratio, \$2,500

TRANSMISSION: HYBRID ELECTRONIC 10-SPEED AUTOMATIC

FX4 OFF-ROAD PACKAGE

-inc: Off-Road Tuned Front Shock Absorbers, Skid Plates, fuel tank, transfer case and front differential, Monotube Rear Shocks, Rock Crawl Mode, 4x4 FX4 Off-Road Bodyside Decal, Hill Descent Control, Electronic Locking w/3.31 Axle Ratio, Tray Style Floor Liner \$1,095

INTERIOR WORK SURFACE

\$195

MULTICONTOUR SEATS W/ACTIVE MOTION REMOVAL

-\$300

-
PRO POWER ONBOARD - 7.2KW
\$750

-
TRAILER TOW PACKAGE
-inc: Towing capability up to TBD
lbs, Pro Trailer Backup Assist \$1,325

-
TWIN PANEL MOONROOF
\$1,495

-
EQUIPMENT GROUP 601A HIGH
-inc: Radio: B&O Unleashed
Sound System by Bang &
Olufsen, HD Radio and 18
speakers including subwoofer,
Tires: 275/60R20 OWL A/T,
275/65R18 OWL all-terrain
spare tire, Power-Deployable
Running Boards, Replaces
step bar, Wheels: 20"
Machined-Aluminum, light
Caribou painted pockets and
King Ranch ornament, Bed
Utility Package, BoxLink, 4
premium locking cleats, LED
Box Lighting, Tailgate Step
w/Tailgate Work Surface,
Power Tailgate, Multi-Contour
Driver & Passenger Seats,
Active Motion \$4,975

-
AGATE BLACK METALLIC

-
JAVA, KING RANCH LEATHER BUCKET
SEATS
-inc: 4-way adjustable
driver/passenger headrests,
heated and ventilated 10-way
power driver and passenger
w/power lumbar, memory
driver's seat, flow-through
console and floor shifter

-
Option Packages Total
\$12,035

Texas Vehicle Exchange

tveauto.com

972-242-5350

1724 Luna Road

Carrollton, TX 75006

© 2023 AutoRevo - All rights reserved. - Powered by AutoRevo