



## 2023 Ford F-150 LARIAT

**Our Price \$67,409**

**Retail Value \$73,155**

View this vehicle on our website at [311chevy.com](https://311chevy.com)

**SMART**  
CHEVROLET

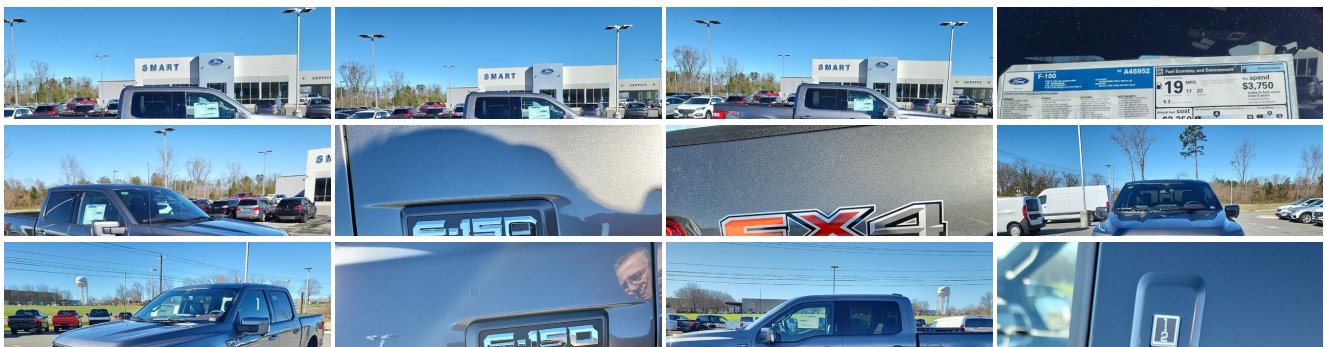
[888-601-2426](tel:888-601-2426)

4417 N Carolina HIGHWAY 704 , Madison, NC 27025

Photos

Details

Contact





## Specifications:

<b>Year:</b>	2023
<b>VIN:</b>	1FTFW1E88PFA45952
<b>Make:</b>	Ford
<b>Stock:</b>	A45952
<b>Model/Trim:</b>	F-150 LARIAT
<b>Condition:</b>	New
<b>Body:</b>	Pickup Truck
<b>Exterior:</b>	Gray Metallic
<b>Engine:</b>	ENGINE: 3.5L V6 ECOBOOST
<b>Interior:</b>	Black Leather
<b>Mileage:</b>	62
<b>Drivetrain:</b>	4 Wheel Drive
<b>Economy:</b>	City 18 / Highway 23

## Vehicle Description

2023 Ford F150 Lariat For Sale. FX4 Off Road Package, Bed Utility Package, Extended Range 36 Gallon Fuel Tank, 360 Degree Camera Package, Lariat Sport Appearance Package, Trailer Tow Package, Ford Co-Pilot 360 Assist 2.0 Package

Installed Options	Option Packages				
<b>Interior</b> <ul style="list-style-type: none"> <li>- Manual Tilt/Telescoping Steering Column</li> <li>- Gauges -inc: Speedometer, Odometer, Voltmeter, Oil Pressure, Engine Coolant Temp, Tachometer, Transmission Fluid Temp, Trip Odometer and Trip Computer</li> <li>- Power Rear Windows- Heated Leather/Metal-Look Steering Wheel</li> <li>- Remote Keyless Entry w/Integrated Key Transmitter, Illuminated Entry and Panic Button</li> <li>- Proximity Key For Doors And Push Button Start</li> <li>- Leather-Trimmed Bucket Seats -inc: heated and ventilated 10-way power driver seat and multi-adjustable power front passenger, power lumbar diver/passenger, memory driver's seat, flow through console w/floor shift and two (2) USB charge only ports</li> <li>- Full Carpet Floor Covering -inc: Carpet Front And Rear Floor Mats</li> <li>- Smart Device Remote Engine Start- Memory Settings -inc: Door Mirrors and Pedals</li> <li>- FOB Controls -inc: Cargo Access and Remote Engine Start</li> <li>- SYNC 4 w/Enhanced Voice Recognition -inc: 12" LCD capacitive touchscreen w/swipe capability, information on demand panel, wireless phone connection, cloud connected, AppLink w/App catalog, 911 Assist, Apple CarPlay and Android Auto compatibility, digital owners manual, conversational voice command recognition and connected navigation, Note: Navigation services require SYNC@4 and FordPass Connect (optional on select vehicles), complimentary connect service and the FordPass app (see FordPass Terms for details), Customer receives a complimentary 90-day trial of navigation services when an eligible vehicle is added to a member's FordPass account, Trial period begins on the new vehicle warranty start date, At the end of the complimentary period, navigation service will terminate, Connected service and features depend on compatible AT&amp;T network availability, Evolving technology/cellular networks/vehicle capability may limit functionality and prevent operation of connected features, FordPass App, compatible w/select smartphone platforms, is available via a download, Message and data rates may apply</li> <li>- Power 1st Row Windows w/Driver And Passenger 1-Touch Up/Down</li> <li>- Power Door Locks w/Autolock Feature- Trip Computer</li> <li>- Seats w/Leatherette Back Material- Perimeter Alarm</li> <li>- Securilock Anti-Theft Ignition (pats) Immobilizer- Driver Seat- Passenger Seat</li> <li>- 60/40 Folding Split-Bench Front Facing Fold-Up Cushion Rear Seat</li> <li>- FordPass Connect 4G Mobile Hotspot Internet Access- Illuminated Front Cupholder</li> <li>- Rear Cupholder- Compass- Keypad- Remote Releases -Inc: Keyfob Cargo Access</li> </ul>	<b>Factory Installed Packages</b> <hr/> <table> <tr> <td>ENGINE: 3.5L V6 ECOBOOST</td><td>\$1,540</td></tr> </table> <hr/> <table> <tr> <td>Option Packages Total</td><td>\$1,540</td></tr> </table>	ENGINE: 3.5L V6 ECOBOOST	\$1,540	Option Packages Total	\$1,540
ENGINE: 3.5L V6 ECOBOOST	\$1,540				
Option Packages Total	\$1,540				

- Garage Door Transmitter- Cruise Control w/Steering Wheel Controls
- Dual Zone Front Automatic Air Conditioning
- HVAC -inc: Underseat Ducts and Console Ducts - Locking Glove Box
- Full Cloth Headliner
- Interior Trim -inc: Metal-Look Instrument Panel Insert, Cabback Insulator, Metal-Look Door Panel Insert, Metal-Look Console Insert and Chrome/Metal-Look Interior Accents
- Leather/Chrome Gear Shifter Material- Day-Night Auto-Dimming Rearview Mirror
- Driver And Passenger Visor Vanity Mirrors w/Driver And Passenger Illumination
- Mini Overhead Console w/Storage, 1 12V DC Power Outlet and 3 120V AC Power Outlets
- Fade-To-Off Interior Lighting- Front And Rear Map Lights- Pickup Cargo Box Lights
- Instrument Panel Bin, Dashboard Storage, Interior Concealed Storage, Driver / Passenger And Rear Door Bins and 2nd Row Underseat Storage
- Delayed Accessory Power- Power Adjustable Pedals- Outside Temp Gauge
- Redundant Digital Speedometer- Digital/Analog Appearance
- 2 Seatback Storage Pockets
- Manual Adjustable Front Head Restraints and Manual Adjustable Rear Head Restraints
- Rear Center Armrest- 1 12V DC Power Outlet- Air Filtration
- 1 12V DC Power Outlet and 3 120V AC Power Outlets

## Exterior

- Wheels: 18" Chrome-Like PVD- Tires: 275/65R18 BSW A/T
- Full-Size Spare Tire Stored Underbody w/Crankdown
- Chrome Power Heated Side Mirrors w/Driver Auto Dimming, Power Folding and Turn Signal Indicator
- Variable Intermittent Wipers- Running Boards
- Tailgate/Rear Door Lock Included w/Power Door Locks
- Ford Co-Pilot360 - Autolamp Auto On/Off Aero-Composite Led Low/High Beam Auto High-Beam Daytime Running Lights Preference Setting Headlamps w/Delay-Off
- Regular Box Style- Steel Spare Wheel- Clearcoat Paint- Chrome Rear Step Bumper
- Chrome Front Bumper w/Body-Colored Rub Strip/Fascia Accent and 2 Tow Hooks
- Black Side Windows Trim- Chrome Door Handles- Power Rear Window w/Defroster
- Deep Tinted Glass- Aluminum Panels- Chrome Grille- Tailgate Rear Cargo Access
- Cargo Lamp w/High Mount Stop Light- Front Fog Lamps- Perimeter/Approach Lights
- Headlights-Automatic Highbeams- LED Brakelights

## Safety

- Manual Tilt/Telescoping Steering Column
- Gauges -inc: Speedometer, Odometer, Voltmeter, Oil Pressure, Engine Coolant Temp, Tachometer, Transmission Fluid Temp, Trip Odometer and Trip Computer
- Power Rear Windows- Heated Leather/Metal-Look Steering Wheel
- Remote Keyless Entry w/Integrated Key Transmitter, Illuminated Entry and Panic Button
- Proximity Key For Doors And Push Button Start
- Leather-Trimmed Bucket Seats -inc: heated and ventilated 10-way power driver seat and multi-adjustable power front passenger, power lumbar driver/passenger, memory driver's seat, flow through console w/floor shift and two (2) USB charge only ports
- Full Carpet Floor Covering -inc: Carpet Front And Rear Floor Mats
- Smart Device Remote Engine Start- Memory Settings -inc: Door Mirrors and Pedals
- FOB Controls -inc: Cargo Access and Remote Engine Start
- SYNC 4 w/Enhanced Voice Recognition -inc: 12" LCD capacitive touchscreen w/swipe capability, information on demand panel, wireless phone connection, cloud connected, AppLink w/App catalog, 911 Assist, Apple CarPlay and Android Auto compatibility, digital owners manual, conversational voice command recognition and connected navigation, Note: Navigation services require SYNC®4 and FordPass Connect (optional on select vehicles), complimentary connect service and the FordPass app (see FordPass Terms for details), Customer receives a complimentary 90-day trial of navigation services when an eligible vehicle is added to a member's FordPass account, Trial period begins on the new vehicle warranty start date, At the end of the complimentary period, navigation service will terminate, Connected service and features depend on compatible AT&T network availability, Evolving technology/cellular networks/vehicle capability may limit functionality and prevent operation of connected features, FordPass App, compatible w/select smartphone platforms, is available via a download, Message and data rates may apply
- Power 1st Row Windows w/Driver And Passenger 1-Touch Up/Down
- Power Door Locks w/Autolock Feature- Trip Computer
- Seats w/Leatherette Back Material- Perimeter Alarm
- Securilock Anti-Theft Ignition (pats) Immobilizer- Driver Seat- Passenger Seat
- 60-40 Folding Split-Bench Front Facing Fold-Up Cushion Rear Seat
- FordPass Connect 4G Mobile Hotspot Internet Access- Illuminated Front Cupholder
- Rear Cupholder- Compass- Keypad- Remote Releases -Inc: Keyfob Cargo Access
- Garage Door Transmitter- Cruise Control w/Steering Wheel Controls
- Dual Zone Front Automatic Air Conditioning
- HVAC -inc: Underseat Ducts and Console Ducts - Locking Glove Box
- Full Cloth Headliner
- Interior Trim -inc: Metal-Look Instrument Panel Insert, Cabback Insulator, Metal-Look

- Door Panel Insert, Metal-Look Console Insert and Chrome/Metal-Look Interior Accents
- Leather/Chrome Gear Shifter Material- Day-Night Auto-Dimming Rearview Mirror
- Driver And Passenger Visor Vanity Mirrors w/Driver And Passenger Illumination
- Mini Overhead Console w/Storage, 1 12V DC Power Outlet and 3 120V AC Power Outlets
- Fade-To-Off Interior Lighting- Front And Rear Map Lights- Pickup Cargo Box Lights
- Instrument Panel Bin, Dashboard Storage, Interior Concealed Storage, Driver / Passenger And Rear Door Bins and 2nd Row Underseat Storage
- Delayed Accessory Power- Power Adjustable Pedals- Outside Temp Gauge
- Redundant Digital Speedometer- Digital/Analog Appearance
- 2 Seatback Storage Pockets
- Manual Adjustable Front Head Restraints and Manual Adjustable Rear Head Restraints
- Rear Center Armrest- 1 12V DC Power Outlet- Air Filtration
- 1 12V DC Power Outlet and 3 120V AC Power Outlets

## Mechanical

- Engine: 2.7L V6 EcoBoost
- Transmission: Electronic 10-Speed Automatic -inc: selectable drive modes: normal, ECO, sport, tow/haul, slippery, deep snow/sand and mud/rut
- 3.55 Axle Ratio- GVWR: 6,600 lbs Payload Package- 50 State Emissions
- Electronic Transfer Case- Automatic Full-Time Four-Wheel Drive
- 70-Amp/Hr 610CCA Maintenance-Free Battery w/Run Down Protection
- 200 Amp Alternator- Towing Equipment -inc: Trailer Sway Control
- Class IV Trailer Hitch Receiver -inc: towing capability up to TBD lbs, on 3.3L V6 PFDI engine (99B) and 2.7L EcoBoost engine (99P) or up to TBD lbs, on 3.5L EcoBoost engine (998) and 5.0L V8 engine (995), 7/4-pin connector, class IV trailer hitch receiver, smart trailer tow connector ( BLIS w/trailer tow coverage where BLIS is available)
- 1760# Maximum Payload- HD Shock Absorbers- Front Anti-Roll Bar
- Electric Power-Assist Speed-Sensing Steering- 26 Gal. Fuel Tank
- Single Stainless Steel Exhaust w/Chrome Tailpipe Finisher- Auto Locking Hubs
- Double Wishbone Front Suspension w/Coil Springs
- Solid Axle Rear Suspension w/Leaf Springs
- 4-Wheel Disc Brakes w/4-Wheel ABS, Front And Rear Vented Discs, Brake Assist, Hill Hold Control and Electric Parking Brake

Smart Chevrolet

Smart Chevrolet

View this car on our website at [311chevy.com/7158859](http://311chevy.com/7158859)

Website: [311chevy.com](http://311chevy.com)

Phone: [888-601-2426](tel:888-601-2426)

Map: [4417 N Carolina HIGHWAY 704, Madison, NC 27025](#)

