

northtexasequipment.com
+1 (682) 402-9972
800 Burlington Rd
Fort Worth, TX 76179

North Texas
Equipment

2005 Chevrolet C6500 BOX TRUCK W/ REAR LIFT GATE / UNDER CDL

Maria Diaz +1 (682) 402-9972

View this car on our website at northtexasequipment.com/7158541/ebrochure



Our Price **\$26,950**

Specifications:

Year: 2005
VIN: 1GBJ6C1E85F532541
Make: Chevrolet
Stock: 532541
Model/Trim: C6500 BOX TRUCK W/ REAR LIFT GATE / UNDER CDL
Condition: Pre-Owned
Exterior: White
Engine: 8.1L V8 GAS ENGINE
Interior: Gray
Mileage: 185,884
Drivetrain: Rear Wheel Drive
Truck Type: Box Truck - Straight Truck



2005 CHEVROLET C6500 16' BOX TRUCK W/ MAXON REAR LIFT GATE

16' BOX BED

8.1L V8

GAS

MANUAL TRANSMISSION

A/C WORKS FINE

MAXON REAR LIFT GATE (LIFT CAPACITY 4,000)

*NO AIR BRAKES

*GVWR 25,999

** UNDER CDL

SINGLE AXLE

185K MILES

#532541

THE 2005 CHEVROLET C6500 16' BOX TRUCK W/ REAR LIFT GATE IS IN GREAT SHAPE INSIDE AND OUT, A/C BLOWS COLD. IT HAS A GOOD SOLID MANUAL TRANSMISSION THAT SHIFTS AS IT SHOULD. THE MAXON LIFT WORK PERFECTLY WITH A 4,000LBS LIFT CAPACITY!

THIS BOX TRUCK IS 100% UNDER CDL!!

FINANCING AVAILABLE!!

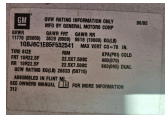
NATION WIDE DELIVERY AVAILABLE!!

NEED A SHIPPING QUOTE? HAVE ANY QUESTIONS?

CALL OR TEXT ANYTIME:

MARIA 682-402-9972 (HABLO ESPAÑOL)

TIM 817-819-6319



2005 Chevrolet C6500 BOX TRUCK W/ REAR LIFT GATE / UNDER CDL

North Texas Equipment - +1 (682) 402-9972 - View this car on our website at northtexasequipment.com/7158541/ebrochure

Our Location :



2005 Chevrolet C6500 BOX TRUCK W/ REAR LIFT GATE / UNDER CDL

North Texas Equipment - +1 (682) 402-9972 - View this car on our website at northtexasequipment.com/7158541/ebrochure

Installed Options

Interior

- Air conditioning not desired - this option should be ordered only when a customer does not require air conditioning
- Electronic engine hour meter
- Engine "Check gauges" telltale light and buzzer, oil pressure gauge
- Gauges, low oil pressure and coolant level, high coolant and engine oil temperature
- Headlamp warning buzzer
- Interior trim, Very Dark Pewter (Requires 69V Very Dark Pewter Vinyl or 69C Very Dark Pewter Cloth)
- Molded vinyl floor covering
- Powerpoints - two in-cab power sources (in addition to optional cigarette lighter) for electrical plug-in accessories
- Provisions for stereo - Includes AM/FM antenna, lead wiring for speakers, and separate door chime module N/A with ZQ2 driver convenience package
- Seat trim, vinyl, Very Dark Pewter
- Seat, driver, high-back bucket, fixed height, manual adjuster - storage in the seat riser with a small lip at the front to stop contents from sliding out
- Seat, passenger, High-back bucket, fixed height, manual back angle adjuster - storage in the seat riser with a small lip at the front to stop contents from sliding out
- Steering, power - ZF variable ratio power
- Stepwell storage areas at each door. Includes storage cover
- Sunshades, passenger side and driver side, vinyl-covered
- Tachometer with automatic and manual transmissions
- Two sided single common key for doors and ignition
- Underhood bodybuilder connections accessory power supply - Provides 12V power supply from the battery with two separate 30 amp fused circuits
- Vinyl door trim panels - with storage pocket on front doors, beverage holders, and reflector on all doors

Exterior

- Bumpers, front steel, painted argent - Bumper thickness 3.9 mm - Daytime running lights
- Exterior roof drip moldings- Front mud flaps
- Horn, single electric mounted inside engine compartment
- Integral grille and fenders - The grille is the same color as hood with single halogen headlamps. Entry steps under cab doors are based upon fuel tank type
- Mirror, manual, 102" (259 cm) wide load, integral arm, integral convex mirror black molded composite 12" x 7" (30.5cm x 17.8 cm) with 6" x 7" (15.2cm x 17.8cm) convex section
- Paint, solid, lower color, Summit White- Paint, solid, upper color, Summit White
- Positive door stops- Provisions for mounting front license plate- Roof marker lamps
- Windows, Solar-Ray tinted - all windows
- Windshield wipers, intermittent, with pulse washers

Safety

- Air conditioning not desired - this option should be ordered only when a customer does not require air conditioning
- Electronic engine hour meter
- Engine "Check gauges" telltale light and buzzer, oil pressure gauge
- Gauges, low oil pressure and coolant level, high coolant and engine oil temperature
- Headlamp warning buzzer
- Interior trim, Very Dark Pewter (Requires 69V Very Dark Pewter Vinyl) or 69C Very Dark Pewter Cloth)
- Molded vinyl floor covering
- Powerpoints - two in-cab power sources (in addition to optional cigarette lighter) for electrical plug-in accessories
- Provisions for stereo - Includes AM/FM antenna, lead wiring for speakers, and separate door chime module N/A with ZQ2 driver convenience package
- Seat trim, vinyl, Very Dark Pewter
- Seat, driver, high-back bucket, fixed height, manual adjuster - storage in the seat riser with a small lip at the front to stop contents from sliding out
- Seat, passenger, High-back bucket, fixed height, manual back angle adjuster - storage in the seat riser with a small lip at the front to stop contents from sliding out
- Steering, power - ZF variable ratio power
- Stepwell storage areas at each door. Includes storage cover
- Sunshades, passenger side and driver side, vinyl-covered
- Tachometer with automatic and manual transmissions
- Two sided single common key for doors and ignition
- Underhood bodybuilder connections accessory power supply - Provides 12V power supply from the battery with two separate 30 amp fused circuits
- Vinyl door trim panels - with storage pocket on front doors, beverage holders, and reflector on all doors

Mechanical

- Air cleaner, dry-type standard filter element (Gasoline engines only)
- Alternator, AD230, Delco Remy 105-amp maximum
- Battery, single, 600 CCA, Delphi Freedom 12V. - 115-minute reserve capacity @ 27 degrees C, 600 CCA @ -18 degrees C, (Gasoline engines only)
- Brake system, hydraulic, split - with 4-channel ABS disc-type Bosch Hydro Max high performance booster, tandem master cylinder provides independent front and rear circuits, front and rear disc Meritor calipers: 15 3/8" (391mm) rotor diameter, 1 1/2" (39.1 mm) rotor thickness with (4) 2 1/2" (64 mm) diameter pistons
- Engine, Vortec 8100MD gasoline V8, 295 hp (220 kw) @ 3600 rpm and 440 lb-ft (594 N-m) torque @ 3,200 rpm - Maximum engine speed 4000 rpm with KZX air compressor and 4,200 rpm without KZX.
- Exhaust system, single horizontal - driver side mounted inside frame rail, (Stainless steel with gasoline engines and aluminized steel with diesel engines)
- Frame, painted semi-gloss black 6mm rail - 50,000 psi (344,750 kPa) yield strength, steel frame, SAE J1392-050XLK steel, dimensions 9 1/2" x 3" x 1/4" section modulus 9.58 cu. in., RBM 479,000
- Front axle, 8000 lbs. (3629 kg) capacity - Up to 54 degree turn angle
- Front suspension, tapered leaf, 8000 lbs. (3629 kg) capacity (Requires FM8 front axle) (Not available with rear axles 19,000 lbs. (8618 kg) or above)
- Front tire manufacturer code, Goodyear (Requires S4A Goodyear)
- Front tire size, 245/75R22.5G - 9350 lbs. (4241 kg) capacity, (With R4A Goodyear, R3C rear premium tread; With R4N Bridgestone R3B front all season tread) (N/A with Michelin)
- Front tire tread, premium highway
- Front wheels, 22.5" x 7.5" (58.9 cm x 19 cm), steel disc - Accuride 10-hole, flange nut, hub piloted, 11.25" (28.5 cm) bolt circle, painted Gray (E- Coat), 13,220 lbs. (5996 kg) capacity, (Requires QH4 rear wheel)
- Fuel tank, single, 50-gallon (189.2L) fuel capacity - driver side, steel top tread plate, sump, drain and steps under cab on front passenger side and rear both rear passenger sides. Provides clean back of cab.(N/A with GPG Lo-Pro option) (Requires QH4, RPR or RPN 22.5" wheels)
- Option PTO not required - This option should only be ordered when a customer specifically does not require an electric hand throttle for use with power-take-off provisions. (Note: may delete transmission PTO gear)

delete transmission (10 gear.)

- Parking brake, hand lever operated transmission mounted drum brake
- Rear axle ratio, 6.50:1 (Requires H08 or HPK single speed rear axle)
- Rear axle, single-speed, Dana S150-S, 15,000 lbs. (6804 kg) capacity - 40,000 lbs. (18,144 kg) GCWR
- Rear suspension, multi-leaf, 15,000 lbs. (6804 kg) capacity (Requires H08 single speed rear axle)
- Rear tire manufacturer code, Goodyear (Requires R4A Goodyear)
- Rear tire size, 245/75R22.5G - 17,640 lbs. (8001 kg) capacity (With S4A Goodyear, S3C rear premium tread; With S4N Bridgestone S3B front all season tread) (N/A with Michelin)
- Rear tire tread, premium highway- Rear wheel drive
- Rear wheels, 22.5" x 7.5" (58.9 cm x 19 cm), steel disc - Accuride 10-hole, flange nut, hub piloted, 11.25" (28.5 cm) bolt circle, painted Gray (E-Coat) 26,440 lbs. (11,993 kg) capacity, (Requires HPK, H08 single speed rear axle or HPM two-speed rear axle) (Requires 22.5" tires)
- Road Speed Governor, controlled by the speed rating of the tires ordered. All vehicles with 19.5" tire sizes and with most 22.5" and 24.5" tires have speed governed to a maximum of 75 mph (120 kph). A few aggressive tire tread patterns may have lower maximum speed ratings that limit governed speed to 65 or 55 mph - see tire company specifications for details.
- Transmission, automatic, Allison 2500 (Wide Ratio) 5-speed - with 0.74 over drive. Torque rating: 550 lb-ft, 33,000 lbs. (15,000 kg) maximum GVWR/GCWR. Includes transmission oil cooler in radiator, increased cooling and column shift. No Parking pawl available. Transmission does not include internal power-take-off gear unless option PTO is specified. With Option PTX, the truck will be equipped with the Allison 2500HS Highway Series transmission. When ordered with option PTO, the truck will be equipped with the Allison 2500RDS Rugged Duty Series transmission.
- Truck Application- Underhood air cleaner restriction gauge
- Wheelbase, 128" (325.1 cm) - with 60" (152.4 cm) CA and 135.3" (343.7 cm) CE. Includes a 6 mm 50,000 psi (344,750 kPa) yield strength, steel frame, RBM: 479,000 Section Modulus 9.58 cu. in.

Option Packages

Factory Installed Packages

-
VORTEC 8100 MD GASOLINE V8, 295
HP (220 KW) @ 3600 RPM, 440 LB-FT
(594N-M) TORQUE @ 3,200 RPM

financing is provided by outside companies. payments rates and down payment is per finance company. With Approved Credit

North Texas Equipment
northtexasequipment.com
+1 (682) 402-9972
800 Burlington Rd
Fort Worth, TX 76179

© 2023 AutoRevo - All rights reserved. - Powered by AutoRevo