



2017 Chevrolet Malibu LT

TERRY ALLEN 9854138702

Our Price \$15,459

View this vehicle on our website at taautoonline.com

TA Auto Sales LLC

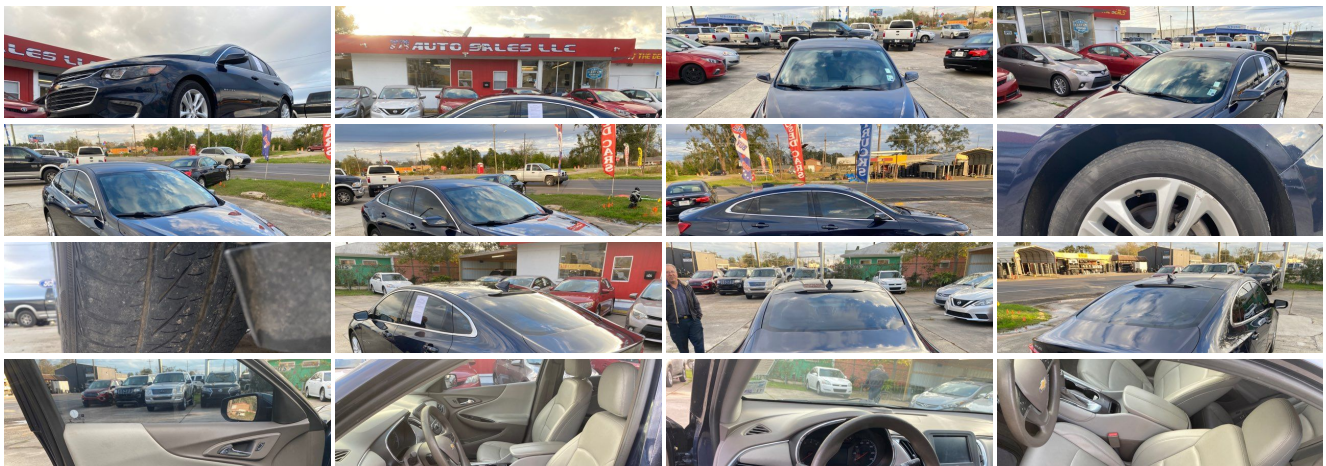
[9854138702](tel:9854138702)

292 W Main St, Thibodaux, LA 70301

Photos

Details

Contact





Specifications:

Year:	2017
VIN:	1G1ZE5ST1HF140752
Make:	Chevrolet
Stock:	ta280
Model/Trim:	Malibu LT
Condition:	Pre-Owned
Body:	Sedan
Exterior:	Blue Velvet Metallic
Engine:	ENGINE, 1.5L TURBO DOHC 4-CYLINDER DI
Interior:	Dark Atmosphere/Medium Ash Gray Leather
Transmission:	TRANSMISSION, 6-SPEED AUTOMATIC
Mileage:	89,897
Drivetrain:	Front Wheel Drive
Economy:	City 27 / Highway 36

Vehicle Description

VERY NICE 2017 MALIBU WITH LEATHER INTERIOR . FINANCING AVAILABLE

Installed Options

Interior

- Cruise control, electronic with set and resume speed - Door locks, power programmable
- Floor mats, carpeted front- Floor mats, carpeted rear
- Passive Entry System includes Remote Keyless Entry, extended range
- Power outlet, auxiliary, 12-volt- Remote panic alarm- Seat adjuster, 8-way power driver
- Seat adjuster, power driver lumbar control
- Steering wheel controls, mounted controls for audio, phone and cruise
- Theft-deterrent system, content theft alarm
- Window, power with driver Express-Up/Down
- Windows, power with Express-Down on all- Air conditioning, single-zone manual
- Air filter, cabin- Armrest, rear center with cupholders- Assist handle, front passenger
- Compass display- Defogger, rear-window, electric
- Driver Information Center, monochromatic display- Keyless start
- Lighting, interior overhead courtesy lamp, dual reading lamps and illuminated trunk area
- Lighting, interior, ambient instrument panel light pipe, front doors pad and map pocket light pipe, and door handle release on all doors
- Lighting, interior, rear reading lamps, switchable
- Map pockets, driver and front passenger seatbacks
- Mirror, inside rearview manual day/night- Seat adjuster, front passenger 6-way manual
- Seat, rear 60/40 split-folding- Seats, front bucket- Steering column, tilt and telescopic
- Steering wheel, 3-spoke- Temperature display, outside- Vent, rear console
- Visors, driver and front passenger illuminated vanity mirrors, covered
- Warning indicator, front passenger safety belt

Exterior

- Tires, P225/55R17 all-season, blackwall- Wheels, 17" (43.2 cm) aluminum
- Glass, acoustic, laminated, windshield and front side windows
- Headlamp control, automatic on and off- Headlamps, halogen
- Mirrors, outside heated power-adjustable, body-color, manual-folding with integrated turn signal indicators
- Tire, compact spare, T125/80R16- Wheel, spare, 16" (40.6 cm) steel

Safety

Option Packages

Factory Installed Packages

ENGINE, 1.5L TURBO DOHC 4-CYLINDER DI
with Variable Valve Timing (VVT) (160 hp [119.3
kW] @ 5700 rpm, 184 lb-ft torque [248.4 N-m] @
2500-3000 rpm)

TRANSMISSION, 6-SPEED AUTOMATIC

SEAT ADJUSTER, 6-WAY POWER FRONT PASSENGER

SHIFT KNOB, LEATHER-WRAPPED

BLUE VELVET METALLIC

AUDIO SYSTEM, CHEVROLET MYLINK RADIO WITH 7"
DIAGONAL COLOR TOUCH-SCREEN, AM/FM STEREO
with seek-and-scan and digital clock, includes
Bluetooth streaming audio for music and select
phones; featuring Android Auto and Apple
CarPlay capability for compatible phone

DARK ATMOSPHERE/MEDIUM ASH GRAY, LEATHER-
APPOINTED SEAT TRIM

SEATS, FRONT BUCKET

- Cruise control, electronic with set and resume speed - Door locks, power programmable
- Floor mats, carpeted front- Floor mats, carpeted rear
- Passive Entry System includes Remote Keyless Entry, extended range
- Power outlet, auxiliary, 12-volt- Remote panic alarm- Seat adjuster, 8-way power driver
- Seat adjuster, power driver lumbar control
- Steering wheel controls, mounted controls for audio, phone and cruise
- Theft-deterrent system, content theft alarm
- Window, power with driver Express-Up/Down
- Windows, power with Express-Down on all- Air conditioning, single-zone manual
- Air filter, cabin- Armrest, rear center with cupholders- Assist handle, front passenger
- Compass display- Defogger, rear-window, electric
- Driver Information Center, monochromatic display- Keyless start
- Lighting, interior overhead courtesy lamp, dual reading lamps and illuminated trunk area
- Lighting, interior, ambient instrument panel light pipe, front doors pad and map pocket light pipe, and door handle release on all doors
- Lighting, interior, rear reading lamps, switchable
- Map pockets, driver and front passenger seatbacks
- Mirror, inside rearview manual day/night- Seat adjuster, front passenger 6-way manual
- Seat, rear 60/40 split-folding- Seats, front bucket- Steering column, tilt and telescopic
- Steering wheel, 3-spoke- Temperature display, outside- Vent, rear console
- Visors, driver and front passenger illuminated vanity mirrors, covered
- Warning indicator, front passenger safety belt

Mechanical

- Axle, 3.23 final drive ratio- Brake lining, high-performance, noise and dust performance
- Brake rotors, Duralife- Brake, parking, manual- Brakes, 4-wheel antilock, 4-wheel disc
- Engine control, stop-start system
- Engine, 1.5L turbo DOHC 4-cylinder DI with Variable Valve Timing (VVT) (160 hp [119.3 kW] @ 5700 rpm, 184 lb-ft torque [248.4 N-m] @ 2500-3000 rpm)
- Front wheel drive- Fueling system, capless- Suspension, front MacPherson strut
- Suspension, rear 4-link, independent- Tool kit, road emergency
- Transmission, 6-speed automatic

TA Auto Sales LLC

TA Auto Sales LLC

View this car on our website at taautoonline.com/7158175

Website: taautoonline.com

Phone: [9854138702](tel:9854138702)

Map: [292 W Main St, Thibodaux, LA 70301](#)

