

2022 Ram 1500 TRX 4X4 DUPONT KEVLAR,LIFTED,BUMPERS,LED'S,22'S

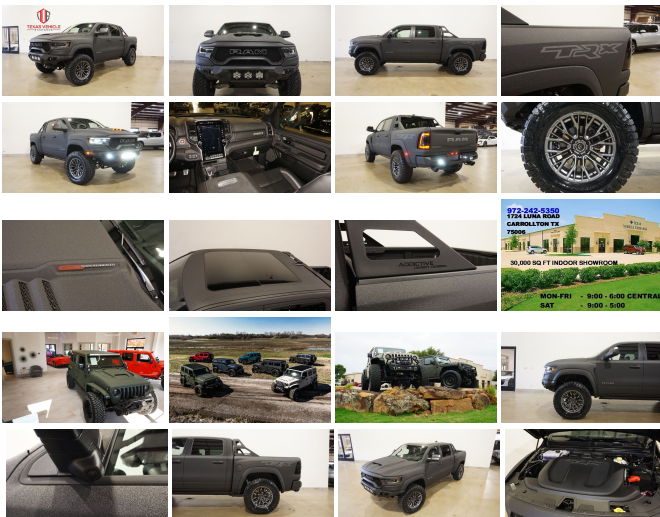
View this car on our website at tveauto.com/7157865/ebrochure



Our Price **\$135,900**

Specifications:

Year:	2022
VIN:	1C6SRFU91NN353911
Make:	Ram
Stock:	353911
Model/Trim:	1500 TRX 4X4 DUPONT KEVLAR,LIFTED,BUMPERS,LED'S,22'S
Condition:	Pre-Owned
Body:	Pickup Truck
Exterior:	Black
Engine:	ENGINE: 6.2L SUPERCHARGED HEMI V8 SRT
Interior:	Black Leather
Transmission:	TRANSMISSION: 8-SPEED AUTOMATIC (8HP95)
Mileage:	59
Drivetrain:	4 Wheel Drive
Economy:	City 10 / Highway 14



NATION WIDE FINANCING

SUBMIT CREDIT APP [WWW.TVEAUTO.COM](https://www.tveauto.com)

OR CALL 972-242-5350

2022 RAM 1500 TRX CREW CAB 4X4, 6.2L SUPERCHARGED HEMI V8 SRT ENGINE, 8 SPEED AUTOMATIC TRANSMISSION, ONLY 59 MILES, RAPTOR BLACK KEVLAR COATING W/BLACK LEATHER INTERIOR, CARFAX REPORTS 1 OWNER NO ACCIDENTS, NON-SMOKER, TRX LEVEL 2 EQUIPMENT GROUP, REMOTE START, CUSTOM 2" LEVEL KIT, ADDICTIVE DESERT DESIGNS BOMBER FRONT BUMPER WITH 3 RAIA DESIGNS IP6 ROUND LED LIGHTS & 2

DASH DESIGNS LT 6 ROUND LED LIGHTS & 2 RIGID INDUSTRIES DUALY D2 LED LIGHTS, FRONT & REAR PARK DISTANCE SENSORS, HEAD-UP DISPLAY, DUAL-PANE PANORAMIC SUNROOF, 12.0" TOUCH SCREEN NAVIGATION, BACK-UP CAMERA, 360 VIEW CAMERAS, POWER RETRACTABLE RUNNING BOARDS, POWER WINDOWS, POWER DOOR LOCKS, POWER FOLDING TRAILER TOW HEATED MIRRORS WITH TURN SIGNALS, BLIND SPOT CONTROL, HEATED TILT/TELESCOPE STEERING WHEEL WITH AUDIO & CRUISE CONTROLS, PADDLE SHIFTERS, DUAL POWER HEATED & COOLED FRONT SEATS WITH DRIVER 2 MEMORY POSITION, POWER ADJUSTABLE PEDALS, TRACTION CONTROL, HILL DESCENT CONTROL, TRX MODE, LAUNCH MODE, TRAILER BRAKE CONTROLLER, AUXILIARY SWITCHES, ICE COLD A/C, DUAL CLIMATE CONTROL, HARMAN/KARDON HD AM/FM/SIRIUS STEREO, U-CONNECT, SELF DIMMING REAR VIEW MIRROR, HOMELINK GARAGE CONTROLS, DUAL LIGHTED VANITY MIRRORS, REAR HEATED & COOLED SEATS, REAR A/C VENTS, POWER SLIDING REAR WINDOW, ADDICTIVE DESERT DESIGNS STEALTH FIGHTER CHASE RACK, SPRAY IN BEDLINER, TINTED TAIL LIGHTS, ADDICTIVE DESERT DESIGNS BOMBER REAR BUMPER WITH 2 RIGID INDUSTRIES DUALY D2 LED LIGHTS, TOW PACKAGE WITH RECEIVER HITCH, RUBBER FLOOR MATS, OWNER'S MANUAL, 2 KEYS/2 REMOTES. 22" FUEL MATTE GUNMETAL "REBAR 6" WHEELS, FRONT TIRES ARE NITTO RIDGE GRAPPLER 37X13.50R/22, REAR TIRES ARE NITTO RIDGE GRAPPLER 37X13.50R/22. RUNS AND DRIVES GREAT. GIVE US A CALL @ 972-242-5350 OR STOP BY FOR A TEST DRIVE. 1724 LUNA RD IN CARROLLTON - 2 MILES NORTH OF 635. CLICK ON CARFAX ICON TO VIEW A FULL REPORT AT NO COST TO YOU.

Vehicle History Report : as Of 03/26/2023



Snapshot

2022 RAM 1500 TRX



No accidents or damage reported to CARFAX



Well maintained vehicle



CARFAX 1-Owner vehicle



Corporate vehicle



Last owned in Texas



10 Last reported odometer reading



FREE CARFAX Report

See the full CARFAX Report for additional information

*carfax Snapshot is a reflection of available information on the date the report was pulled. carfax is constantly being updated with new information and is subject to change at any time.

Our Location :



2022 Ram 1500 TRX 4X4 DUPONT KEVLAR,LIFTED,BUMPERS,LED'S,22'S

Texas Vehicle Exchange - 972-242-5350 - View this car on our website at veauto.com/7157865/ebrochure

Installed Options

Interior

- 2 12V DC Power Outlets- 2 12V DC Power Outlets and 2 120V AC Power Outlets
- 4 Way Front Headrests
- 4-Way Passenger Seat -inc: Manual Recline and Fore/Aft Movement
- 4G LTE Wi-Fi Hot Spot Mobile Hotspot Internet Access
- 8-Way Power Driver Seat -inc: Power Recline, Height Adjustment, Fore/Aft Movement and Cushion Tilt
- Air Filtration- Analog Appearance- Bucket Seats- Cloth/Vinyl Bucket Seats- Compass
- Cruise Control w/Steering Wheel Controls- Day-Night Auto-Dimming Rearview Mirror
- Delayed Accessory Power- Dual Zone Front Automatic Air Conditioning w/Front Infrared
- FOB Controls -inc: Remote Engine Start- Fade-To-Off Interior Lighting
- Front Center Armrest w/Storage and Rear Center Armrest
- Front Facing Cloth/Vinyl Rear Seat- Front Map Lights- Front Seat Back Map Pockets
- Full Carpet Floor Covering MOPAR -inc: Vinyl/Rubber Front And Rear Floor Mats
- Full Cloth Headliner
- Full Floor Console w/Covered Storage, Mini Overhead Console w/Storage, 2 12V DC Power Outlets and 2 120V AC Power Outlets

- Gauges -inc: Speedometer, Odometer, Voltmeter, Oil Pressure, Engine Coolant Temp, Tachometer, Inclinometer, Altimeter, Oil Temperature, Transmission Fluid Temp, Engine Hour Meter, Trip Odometer and Trip Computer
- HVAC -inc: Underseat Ducts and Console Ducts - Illuminated Front Cupholder
- Illuminated Locking Glove Box
- Instrument Panel Bin, Dashboard Storage, Interior Concealed Storage, Driver / Passenger And Rear Door Bins
- Interior Trim -inc: Deluxe Sound Insulation, Metal-Look/Piano Black Instrument Panel Insert, Piano Black Door Panel Insert, Metal-Look Console Insert and Aluminum/Metal-Look Interior Accents
- Leather/Metal-Look Gear Shifter Material- Manual Adjustable Rear Head Restraints
- Manual Tilt/Telescoping Steering Column- Outside Temp Gauge
- Passenger Visor Vanity Mirror w/Passenger Illumination- Perimeter Alarm
- Pickup Cargo Box Lights
- Power 1st Row Windows w/Driver And Passenger 1-Touch Up/Down
- Power 4-Way Driver Lumbar Adjust- Power Door Locks w/Autolock Feature
- Power Rear Windows- Proximity Key For Push Button Start Only
- Rear 60/40 Folding Seat- Rear Cupholder- Redundant Digital Speedometer
- Remote Keyless Entry w/Integrated Key Transmitter, Illuminated Entry and Panic Button
- Seats w/Cloth Back Material- Sentry Key Immobilizer- Smart Device Integration
- Smart Device Remote Engine Start- Sport Leather Steering Wheel Systems Monitor
- Trip Computer- Valet Function- Vinyl Door Trim Insert

Exterior

- Aluminum Spare Wheel
- Auto On/Off Aero-Composite Led Low/High Beam Daytime Running Auto High-Beam Headlamps w/Delay-Off
- Black Door Handles- Black Exterior Mirrors- Black Fender Flares
- Black Front Bumper w/Metal-Look Rub Strip/Fascia Accent and 2 Tow Hooks
- Black Grille- Black Rear Step Bumper w/1 Tow Hook - Black Side Windows Trim
- Cab Clearance Lights- Cargo Lamp w/High Mount Stop Light- Clearcoat Paint w/Decal
- Deep Tinted Glass- Exterior Mirrors Courtesy Lamps- Exterior Mirrors w/Heating Element
- Exterior Mirrors w/Supplemental Signals- Front Fog Lamps
- Full-Size Spare Tire Stored Underbody w/Crankdown- Galvanized Steel/Aluminum Panels
- Headlights-Automatic Highbeams- LED Brake Lights- Laminated Glass
- Power Rear Window- Power Side Mirrors w/Driver Auto Dimming and Convex Spotter
- Power-Folding Mirrors- Regular Box Style- Tailgate Rear Cargo Access
- Tailgate/Rear Door Lock Included w/Power Door Locks- Tires: LT325/65R18D All Terrain
- Variable Intermittent Wipers- Wheels: 18" x 9" Black Paint/Polish Aluminum

Safety

- 2 12V DC Power Outlets- 2 12V DC Power Outlets and 2 120V AC Power Outlets
- 4 Way Front Headrests
- 4-Way Passenger Seat -inc: Manual Recline and Fore/Aft Movement
- 4G LTE Wi-Fi Hot Spot Mobile Hotspot Internet Access
- 8-Way Power Driver Seat -inc: Power Recline, Height Adjustment, Fore/Aft Movement and Cushion Tilt
- Air Filtration- Analog Appearance- Bucket Seats- Cloth/Vinyl Bucket Seats- Compass
- Cruise Control w/Steering Wheel Controls- Day-Night Auto-Dimming Rearview Mirror
- Delayed Accessory Power- Dual Zone Front Automatic Air Conditioning w/Front Infrared
- FOB Controls -inc: Remote Engine Start- Fade-To-Off Interior Lighting
- Front Center Armrest w/Storage and Rear Center Armrest
- Front Facing Cloth/Vinyl Rear Seat- Front Map Lights- Front Seat Back Map Pockets
- Full Carpet Floor Covering MOPAR -inc: Vinyl/Rubber Front And Rear Floor Mats
- Full Cloth Headliner
- Full Floor Console w/Covered Storage, Mini Overhead Console w/Storage, 2 12V DC Power Outlets and 2 120V AC Power Outlets
- Gauges -inc: Speedometer, Odometer, Voltmeter, Oil Pressure, Engine Coolant Temp, Tachometer, Inclinometer, Altimeter, Oil Temperature, Transmission Fluid Temp, Engine Hour Meter, Trip Odometer and Trip Computer
- HVAC -inc: Underseat Ducts and Console Ducts - Illuminated Front Cupholder
- Illuminated Locking Glove Box
- Instrument Panel Bin, Dashboard Storage, Interior Concealed Storage, Driver / Passenger And Rear Door Bins
- Interior Trim -inc: Deluxe Sound Insulation, Metal-Look/Piano Black Instrument Panel Insert, Piano Black Door Panel Insert, Metal-Look Console Insert and Aluminum/Metal-Look Interior Accents
- Leather/Metal-Look Gear Shifter Material- Manual Adjustable Rear Head Restraints
- Manual Tilt/Telescoping Steering Column- Outside Temp Gauge
- Passenger Visor Vanity Mirror w/Passenger Illumination- Perimeter Alarm
- Pickup Cargo Box Lights
- Power 1st Row Windows w/Driver And Passenger 1-Touch Up/Down
- Power 4-Way Driver Lumbar Adjust- Power Door Locks w/Autolock Feature

- Power Rear Windows- Proximity Key For Push Button Start Only
- Rear 60/40 Folding Seat- Rear Cupholder- Redundant Digital Speedometer
- Remote Keyless Entry w/Integrated Key Transmitter, Illuminated Entry and Panic Button
- Seats w/Cloth Back Material- Sentry Key Immobilizer- Smart Device Integration
- Smart Device Remote Engine Start- Sport Leather Steering Wheel- Systems Monitor
- Trip Computer- Valet Function- Vinyl Door Trim Insert

Mechanical

- 1310# Maximum Payload- 250 Amp Alternator- 3.55 Rear Axle Ratio- 33 Gal. Fuel Tank
- 4-Wheel Disc Brakes w/4-Wheel ABS, Front And Rear Vented Discs, Brake Assist, Hill Descent Control, Hill Hold Control and Electric Parking Brake
- 5 Skid Plates- 800CCA Maintenance-Free Battery- Auto Locking Hubs
- Automatic Full-Time Four-Wheel Drive
- Automatic w/Driver Control Ride Control Off-Road Adaptive Suspension
- Bilstein Brand Name Shock Absorbers
- Class IV Towing Equipment -inc: Hitch and Trailer Sway Control
- Driver Selectable Rear Locking Differential
- Dual Stainless Steel Exhaust w/Black Tailpipe Finisher- Electric Power-Assist Steering
- Electronic Transfer Case- Engine Oil Cooler- Engine: 6.2L Supercharged HEMI V8 SRT
- Federal Emissions- Front Anti-Roll Bar- GVWR: 7,800 lbs
- Short And Long Arm Front Suspension w/Coil Springs
- Solid Axle Rear Suspension w/Coil Springs- Trailer Wiring Harness
- Transmission w/Driver Selectable Mode and Sequential Shift Control w/Steering Wheel Controls
- Transmission: 8-Speed Automatic (8HP95)

Option Packages

Factory Installed Packages

ENGINE: 6.2L SUPERCHARGED HEMI V8 SRT

TRANSMISSION: 8-SPEED AUTOMATIC (8HP95)

BLACK POWER-FOLD TRAILER TOW MIRRORS

-inc: Mirror-Mounted Aux Reverse Lamps, Exterior Mirrors w/Memory, Mirror Clearance/Running Lights, Trailer Tow Mirrors **\$445**

DUAL-PANE PANORAMIC SUNROOF

-inc: Dome Dual LED Reading Lamp **\$1,495**

TRX LEVEL 2 EQUIPMENT GROUP

-inc: Full Length Premium Upgraded Floor Console, Rear Window Defroster, Surround View Camera System, Blind Spot & Cross Path Detection, Rain Sensitive Windshield Wipers, LED CHMSL Lamp, ParkSense Front/Rear Park Assist w/Stop, Power Adjustable Pedals w/Memory, Pick-Up Box Lighting, Body Color Door Handles, MOPAR Bright Pedal Kit, IP LED Ambient Light Pipe, Rear Underseat Compartment Storage, Trailer Brake Control, Head Up Display, Heated Second Row Seats, Heated Steering Wheel, Leather/Suede Flat-Bottom Steering Wheel, Wireless Charging Pad, Driver/Passenger Wrapped Assist Handles, Ventilated Rear Seats, Rear 60/40 Folding Split Recline Seat, Ventilated Front Seats, Remote Tailgate Release, harman/kardon 19 Speaker Premium Sound, Premium Wrapped IP Bezel, 2-Door

Passive Entry, Front Door
Locks, Universal Garage Door
Opener, Exterior Mirrors
w/Memory, Luxury Front Door
Trim Panel, Driver Seat
Memory, Front Door Accent
Lighting, Power 8-Way Driver
& Passenger Seats,

-
QUICK ORDER PACKAGE 29Y

-inc: Engine: 6.2L Supercharged
HEMI V8 SRT, Transmission:
8-Speed Automatic (8HP95)

-
Option Packages Total
\$12,235

Texas Vehicle Exchange

tveauto.com

972-242-5350

1724 Luna Road

Carrollton, TX 75006

© 2023 AutoRevo - All rights reserved. - Powered by AutoRevo