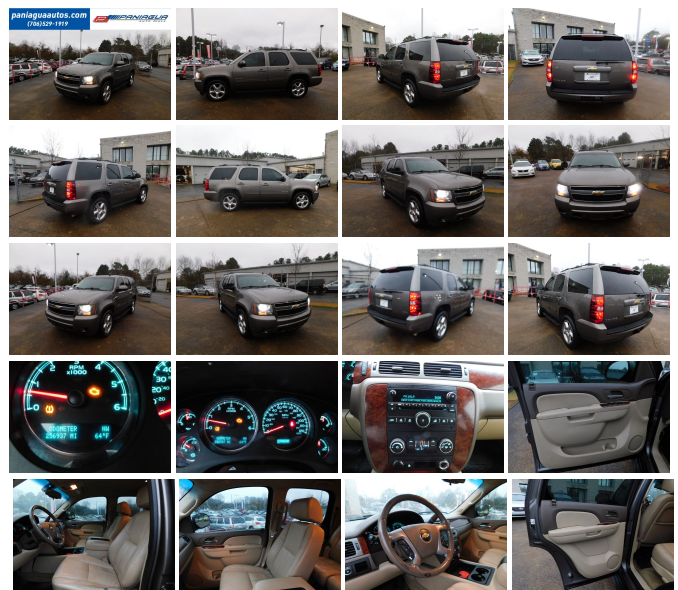


2011 Chevrolet Tahoe LS

View this car on our website at paniaguaautos.com/7157084/ebrochure



Our Price **\$7,900**

Specifications:

Year: 2011
VIN: 1GNSCAE01BR354551
Make: Chevrolet
Stock: 7809
Model/Trim: Tahoe LS
Condition: Pre-Owned
Body: SUV
Exterior: Brown
Engine: ENGINE, VORTEC 5.3L V8 SFI FLEXFUEL
Interior: Tan Leather
Transmission: AUTOMATIC
Mileage: 256,937
Drivetrain: Rear Wheel Drive
Economy: City 15 / Highway 21

HURRY IN TODAY AND CHECK OUT ALL OF OUR SPECIAL DEALS
WE HAVE THE BEST SELECTION OF USED VEHICLES AT SOME
OF THE BEST DEALS OF THE SEASON COME SEE US SOON

2011 Chevrolet Tahoe LS

Paniagua Auto Mall - 706-529-1919& 423-472-4045 - View this car on our website at paniaguaautos.com/7157084/ebrochure

Our Location :



2011 Chevrolet Tahoe LS

Paniagua Auto Mall - 706-529-1919& 423-472-4045 - View this car on our website at paniaguaautos.com/7157084/ebrochure

Installed Options

Interior

- Air conditioning, rear auxiliary
- Air conditioning, tri-zone manual HVAC controls with individual climate settings for driver, right-front passenger and rear seat with rear controls located in floor console with front bucket seats and in the roof console with front bench seat
- Console, floor with storage area, cup holders and integrated second row audio controls (Not available with (AZ3) 40/20/40 split-bench front seat.)
- Cruise control, electronic with set and resume speed
- Door locks, power programmable with lockout protection
- Floor mats, color-keyed carpeted first and second row, removable
- Power outlets, 3 auxiliary, 12-volt includes 2 on the instrument panel and 1 in the cargo area
- Remote vehicle starter prep package includes Remote Keyless Entry (Remote vehicle starter fob available as a GMC accessory.)
- Seat adjuster, driver 6-way power
- Seat adjuster, front passenger 6-way power (Standard with (A95) front bucket seats only. Not available with (AZ3) 40/20/40 split-bench front seat.)
- Seats, front bucket with Premium Cloth, (AG1) 6-way power driver and (AG2) front passenger seat adjusters, adjustable head restraints, (AM1) driver manual lumbar control, floor console and rear storage pockets
- Seats, second row 60/40 split-folding bench, 3-passenger with center armrest with 2 cup holders
- Seats, third row 50/50 split-bench, 3-passenger removable, all-belts-to-seat
- Steering wheel controls, mounted audio and cruise controls
- Assist handles, front passenger and second row outboard - Defogger, rear-window electric
- Floor covering, color-keyed carpeting- Headliner, cloth
- Heater, rear auxiliary with rear passenger heating ducts
- Instrumentation, analog with speedometer, odometer with trip odometer, fuel level, voltmeter, engine temperature, oil pressure and tachometer
- Lighting, interior with dome light, driver- and passenger-side door switch with delayed entry feature, cargo lights, door handle or Remote Keyless Entry-activated illuminated entry and map lights in front and second seat positions

Option Packages

Factory Installed Packages

ENGINE, VORTEC 5.3L V8 SFI FLEXFUEL

with Active Fuel Management, capable of running on unleaded or up to 85% ethanol (with gas - 320 hp [238.6 kW] @ 5400 rpm, 335 lb-ft of torque [452.2 N-m] @ 4000 rpm, with E85 ethanol - 326 hp [243.1 kW] @ 5300 rpm, 348 lb-ft of torque [469.8 N-m] @ 4400 rpm), iron block

- Mirror, inside rearview manual day/night
- Steering column, Tilt-Wheel, adjustable with brake/transmission shift interlock
- Steering wheel, leather-wrapped Theft-deterrent system, vehicle, PASS-Key III
- Visors, driver and front passenger illuminated vanity mirrors, padded with cloth trim, extends on rod
- Warning tones headlamp on, key-in-ignition, driver and right-front passenger safety belt unfasten and turn signal on
- Windows, power with driver Express-Down and lockout features

Exterior

- Luggage rack center rails, roof-mounted, Black
- Luggage rack side rails, roof-mounted, Black
- Mirrors, outside heated power-adjustable, manual-folding (Mirror caps are color-keyed.)
- Tires, P265/70R17 all-season, blackwall
- Wheels, 4 - 17" x 7.5" (43.2 cm x 19.1 cm) aluminum, 5-spoke with smooth surface and rectangular pockets
- Assist steps, Black- Door handles, color-keyed- Fascia, front color-keyed
- Fascia, rear color-keyed
- Glass, Solar-Ray deep-tinted (all windows except light-tinted glass on windshield and driver- and front passenger-side glass)
- Headlamps, dual halogen composite with automatic exterior lamp control and flash-to-pass feature
- Liftgate with liftglass rear door system with rear-window wiper/washer
- Moldings, color-keyed bodyside
- Tire carrier, lockable outside spare winch-type mounted under frame at rear
- Tire, spare P265/70R17 all-season blackwall- Wheel, 17" (43.2 cm) full-size, steel spare
- Wiper, rear intermittent with washer

Safety

- Air conditioning, rear auxiliary
- Air conditioning, tri-zone manual HVAC controls with individual climate settings for driver, right-front passenger and rear seat with rear controls located in floor console with front bucket seats and in the roof console with front bench seat
- Console, floor with storage area, cup holders and integrated second row audio controls (Not available with (AZ3) 40/20/40 split-bench front seat.)
- Cruise control, electronic with set and resume speed
- Door locks, power programmable with lockout protection
- Floor mats, color-keyed carpeted first and second row, removable
- Power outlets, 3 auxiliary, 12-volt includes 2 on the instrument panel and 1 in the cargo area
- Remote vehicle starter prep package includes Remote Keyless Entry (Remote vehicle starter fob available as a GMC accessory.)
- Seat adjuster, driver 6-way power
- Seat adjuster, front passenger 6-way power (Standard with (A95) front bucket seats only. Not available with (AZ3) 40/20/40 split-bench front seat.)
- Seats, front bucket with Premium Cloth, (AG1) 6-way power driver and (AG2) front passenger seat adjusters, adjustable head restraints, (AM1) driver manual lumbar control, floor console and rear storage pockets
- Seats, second row 60/40 split-folding bench, 3-passenger with center armrest with 2 cup holders
- Seats, third row 50/50 split-bench, 3-passenger removable, all-belts-to-seat
- Steering wheel controls, mounted audio and cruise controls
- Assist handles, front passenger and second row outboard- Defogger, rear-window electric
- Floor covering, color-keyed carpeting- Headliner, cloth
- Heater, rear auxiliary with rear passenger heating ducts
- Instrumentation, analog with speedometer, odometer with trip odometer, fuel level, voltmeter, engine temperature, oil pressure and tachometer
- Lighting, interior with dome light, driver- and passenger-side door switch with delayed entry feature, cargo lights, door handle or Remote Keyless Entry-activated illuminated entry and map lights in front and second seat positions
- Mirror, inside rearview manual day/night
- Steering column, Tilt-Wheel, adjustable with brake/transmission shift interlock
- Steering wheel, leather-wrapped Theft-deterrent system, vehicle, PASS-Key III
- Visors, driver and front passenger illuminated vanity mirrors, padded with cloth trim, extends on rod
- Warning tones headlamp on, key-in-ignition, driver and right-front passenger safety belt unfasten and turn signal on
- Windows, power with driver Express-Down and lockout features

Mechanical

- Transmission, 6-speed automatic, electronically controlled with overdrive and tow/haul mode
- Alternator, 160 amps
- Battery, heavy-duty 600 cold-cranking amps, maintenance-free with rundown protection and retained accessory power

and retained accessory power

- Brakes, 4-wheel antilock, 4-wheel disc, VAC power
- Cooling, external engine oil cooler, heavy-duty air-to-oil, integral to driver side of radiator (Included and only available with (K5L) Heavy-Duty Trailing Package.)
- Engine, Vortec 5.3L V8 SFI FlexFuel with Active Fuel Management, capable of running on unleaded or up to 85% ethanol (with gas - 320 hp [238.6 kW] @ 5400 rpm, 335 lb-ft of torque [452.2 N-m] @ 4000 rpm, with E85 ethanol - 326 hp [243.1 kW] @ 5300 rpm, 348 lb-ft of torque [469.8 N-m] @ 4400 rpm), iron block
- GVWR, 7100 lbs. (3221 kg) (Standard on 2WD models.)- Rear axle, 3.08 ratio
- Rear wheel drive- Steering, power- Suspension Package, Premium Smooth Ride
- Suspension, front coil-over-shock with stabilizer bar
- Suspension, rear multi-link with coil springs
- Trailing equipment includes trailing hitch platform, 7-wire harness with independent fused trailing circuits mated to a 7-way sealed connector and (VR4) 2" trailing receiver

We sale used vehicles as is no warranty. We sale extended warranties ask one of our sales rep. for details.

Paniagua Auto Mall

paniaguaautos.com

706-529-1919& 423-472-4045

1776 E. Walnut Ave

Dalton, Georgia 30721

© 2024 AutoRevo - All rights reserved. - Powered by AutoRevo