

2012 Volkswagen Jetta SE

View this car on our website at paniaguaautos.com/7156745/ebrochure

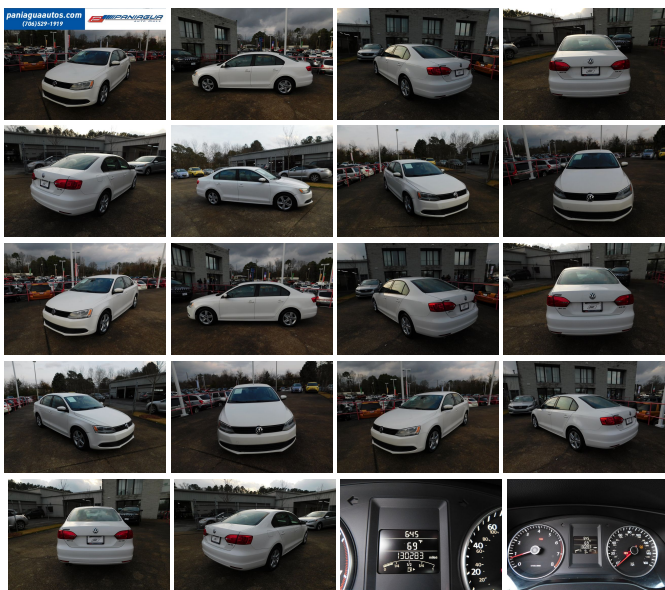


Our Price **\$5,900**

Specifications:

Year:	2012
VIN:	3VWBX7AJ5CM014544
Make:	Volkswagen
Stock:	6766
Model/Trim:	Jetta SE
Condition:	Pre-Owned
Body:	Sedan
Exterior:	White
Engine:	2.5L DOHC SMPI I5 engine
Interior:	Black Leather
Transmission:	AUTOMATIC
Mileage:	130,283
Drivetrain:	Front Wheel Drive
Economy:	City 23 / Highway 33

2012 VOLKSWAGEN JETTA SE 2.5L 5 CYLINDER MANUAL
TRANSMISSION ALL POWER HURRY IN TODAY AND CHECK OUT
OUR MOST RECENT INVENTORY WE HAVE THE BEST
SELECTION OF USED VEHICLES IN TOWN COME SEE US SOON



2012 Volkswagen Jetta SE

Paniagua Auto Mall - 706-529-1919& 423-472-4045 - View this car on our website at paniaguaautos.com/7156745/ebrochure

Our Location :



2012 Volkswagen Jetta SE

Paniagua Auto Mall - 706-529-1919 & 423-472-4045 - View this car on our website at paniaguaautos.com/7156745/ebrochure

Installed Options

Interior

- Carpeted front/rear floor mats- Leatherette seat trim
- Pwr door locks -inc: auto-lock, front/rear central locking controls, auto-unlock upon airbag deployment
- Remote keyless entry -inc: (2) folding keys - (2) front cup holders
- 6-way manual front bucket seats -inc: rear-impact optimized height-adjustable locking head restraints
- 60/40 split-folding rear bench seat -inc: height-adjustable head restraints for all seating positions, center armrest w/(2) cup holders, pass-thru
- Assist handles -inc: (2) front, (2) rear - Chrome accents- Cruise control
- Dual illuminated visor vanity mirrors- Front center console w/armrest & storage
- Front passenger seatback storage pocket - Front/rear door panel armrests
- Front/rear door storage pockets- Fully carpeted/lined luggage compartment
- Immobilizer theft-deterrent system
- Instrumentation -inc: speedometer, tachometer, odometer, trip odometer, fuel gauge, gear indicator, outside temp, seatbelt reminder, fuel cap seal indicator, warning lights, digital clock, white & red illumination, headlights-on warning tone
- Leatherette door panel inserts
- Lighting -inc: front center dome light, luggage compartment light
- Lockable illuminated glove box- Manual air conditioning -inc: front vents, pollen filter
- Pwr windows -inc: front/rear 1-touch auto up/down, pinch protection, key-operated open/close feature
- Rear window defroster
- Tilt/telescoping 3-spoke steering wheel -inc: theft-deterrent steering column

Exterior

- 16" x 6.5" steel wheels w/covers - All-season tires- Black grille- Body-color bumpers
- Body-color door handles- Body-color heated pwr mirrors w/integrated turn signals
- Dual-reflector halogen headlamps- Plastic loading edge protection
- Variable intermittent windshield wipers

Safety

- Carpeted front/rear floor mats- Leatherette seat trim
- Pwr door locks -inc: auto-lock, front/rear central locking controls, auto-unlock upon airbag deployment
- Remote keyless entry -inc: (2) folding keys - (2) front cup holders
- 6-way manual front bucket seats -inc: rear-impact optimized height-adjustable locking head restraints
- 60/40 split-folding rear bench seat -inc: height-adjustable head restraints for all seating positions, center armrest w/(2) cup holders, pass-thru
- Assist handles -inc: (2) front, (2) rear - Chrome accents- Cruise control
- Dual illuminated visor vanity mirrors- Front center console w/armrest & storage
- Front passenger seatback storage pocket - Front/rear door panel armrests
- Front/rear door storage pockets- Fully carpeted/lined luggage compartment
- Immobilizer theft-deterrent system
- Instrumentation -inc: speedometer, tachometer, odometer, trip odometer, fuel gauge, gear indicator, outside temp, seatbelt reminder, fuel cap seal indicator, warning lights, digital clock, white & red illumination, headlights-on warning tone
- Leatherette door panel inserts
- Lighting -inc: front center dome light, luggage compartment light
- Lockable illuminated glove box- Manual air conditioning -inc: front vents, pollen filter
- Pwr windows -inc: front/rear 1-touch auto up/down, pinch protection, key-operated open/close feature
- Rear window defroster
- Tilt/telescoping 3-spoke steering wheel -inc: theft-deterrent steering column

Mechanical

- Front electronic differential lock (EDL)- 2.5L DOHC SMPI I5 engine
- 5-speed manual transmission -inc: cable shift, clutch starter interlock, hydraulic clutch
- Dual exhaust tips- Front wheel drive- Front/rear disc pwr brakes
- Hydraulic pwr rack & pinion steering
- Independent MacPherson strut front suspension -inc: coil springs, telescopic shock absorbers, stabilizer bar
- Twin-beam rear suspension -inc: coil springs, telescopic pressurized gas shock absorbers, stabilizer bar

We sale used vehicles as is no warranty. We sale extended warranties ask one of our sales rep. for details.

Paniagua Auto Mall

paniaguaautos.com

706-529-1919 & 423-472-4045

1776 E. Walnut Ave

Dalton, Georgia 30721

© 2024 AutoRevo - All rights reserved. - Powered by AutoRevo