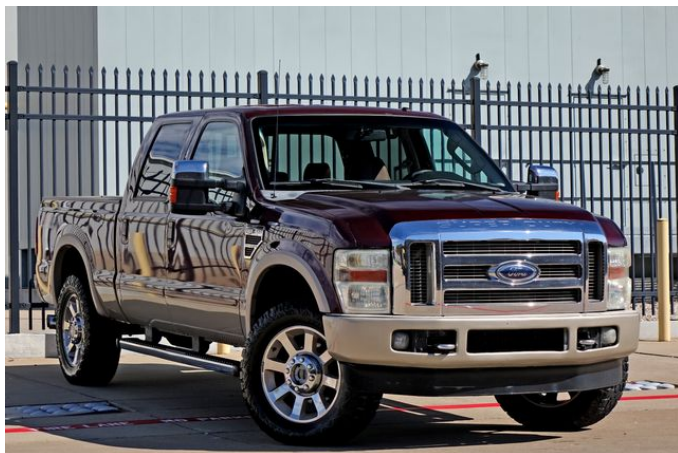


2010 Ford F-250SD King Ranch

View this car on our website at carricksautos.com/7156111/ebrochure



Our Price **\$18,996**

Specifications:

Year:	2010
VIN:	1FTSW2BR8AEA56755
Make:	Ford
Stock:	A56755
Model/Trim:	F-250SD King Ranch
Condition:	Pre-Owned
Exterior:	Royal Red Metallic
Interior:	Tan
Mileage:	208,000
Drivetrain:	4 Wheel Drive

2010 Ford F-250SD King Ranch

Carrick's Autos - 972-945-1220 - View this car on our website at carricksautos.com/7156111/ebrochure

Our Location :



2010 Ford F-250SD King Ranch

Carrick's Autos - 972-945-1220 - View this car on our website at carricksautos.com/7156111/ebrochure

Installed Options

Interior

- (4) air registers w/positive shut-off- Accessory delay- Air conditioning
- Air conditioning w/chrome ringed black vents
- Air conditioning w/chrome ringed silver metallic vents - All-weather front/rear floor mats
- Auxiliary pwr point- Black carpeting
- Black instrumentation -inc: tachometer, speedometer, oil pressure, coolant temp, fuel gauge, indicator lights, message center w/odometer, trip odometer, engine hour meter, warning messages, transmission temp gauge, distance-to-empty, average fuel economy, unique metallic patterned applique
- Black instrumentation -inc: tachometer, speedometer, oil pressure, coolant temp, fuel gauge, indicator lights, message center w/odometer, trip odometer, engine hour meter, warning messages, voltmeter, distance-to-empty, average fuel economy
- Black leather-wrapped steering wheel w/audio controls- Black vinyl full-floor covering
- Carpet delete- Cloth 40/20/40 split bench seat -inc: armrest, cupholders, storage
- Cloth two-tone captain chairs -inc: stitched Cabelas logo on seat back, floor console (REQ: 17L Cabelas Pkg)
- Color-keyed carpet full-floor covering- Color-keyed cloth headliner
- Color-keyed door trim panel -inc: color-keyed soft armrest, pwr switch bezel, molded upper applique, upper & lower map pockets, grab handle & reflector
- Color-keyed door trim panel -inc: soft armrest, grab handle, reflector, woodgrain upper applique, upper & lower map pockets
- Color-keyed door trim panel -inc: soft armrest, grab handle, reflector, woodgrain upper applique, upper & lower map pockets, King Ranch Chaparral leather inserts
- Color-keyed leather-wrapped steering wheel w/audio & SYNC controls
- Color-keyed molded door trim panel-inc: hard armrest, grab handle, reflector
- Color-keyed scuff plates- Cruise control- Dash-top tray
- Door trim panel -inc: soft armrest, pwr switch bezel, metallic-patterned applique, upper & lower map pockets, grab handle & reflector
- Driver & front passenger grab handles- Driver & front passenger manual lumbar support
- Driver manual lumbar support
- Dual color-keyed cloth sunvisors-inc: driver-side map strap, dual covered lighted mirrors
- Dual color-keyed cloth sunvisors-inc: driver-side pocket, passenger-side mirror insert

- Dual color-keyed cloth sunvisors-inc: dual covered mirrors- Dual color-keyed coat hooks
- Dual zone electronic automatic temperature control (EATC) - Ebony carpeting
- Electrochromic rearview mirror w/built-in microphone for SYNC
- FlexFold 60/40 rear bench seat w/fold-flat feature, grocery hooks, dual cupholders, tray, steel load floor
- FlexFold 60/40 rear bench seat w/fold-flat feature, grocery hooks, dual cupholders, tray, steel load floor, under seat lockable stowage
- Front door operated dome lamp w/time delay off & IP switch
- Front passenger-side roof ride handle- Front/rear color-keyed carpeted floor mats
- Front/rear map lamps- Glove box
- HD vinyl bench seat w/recline & integrated armrest -inc: cupholders in armrest (w/213 ESOF Transfer Case, REQ: 445 or 447 Manual Trans)
- Instrument panel mounted dual cupholders
- Instrument panel mounted storage bin & trash bag hook
- Leather luxury captain chairs w/console
- Metallic-faced instrumentation -inc: tachometer, speedometer, oil pressure, coolant temp, fuel gauge, indicator lights, enhanced message center w/odometer, trip odometer, engine hour meter, warning messages, trip computer (compass, autolamp configuration & status, system check, language selection), distance-to-empty, average fuel economy, woodgrain panel inserts, transmission temp gauge
- Metallic-faced instrumentation -inc: tachometer, speedometer, oil pressure, coolant temp, fuel gauge, indicator lights, enhanced message center w/odometer, trip odometer, engine hour meter, warning messages, trip computer (compass, autolamp configuration & status, system check, language selection), transmission temp gauge, distance-to-empty, average fuel economy, woodgrain panel inserts
- Overhead console-inc: garage door opener & sunglass bin
- Pwr adjustable pedals w/memory- Pwr door locks w/backlit switches
- Pwr door locks w/backlit switches, autolock & auto unlock, SecuriCode keyless entry keypad
- Pwr driver & front passenger seats - Pwr driver & front passenger seats w/driver memory
- Pwr windows w/driver one-touch-down & backlit switches- Rear armrests w/cupholders
- Rear seating roof ride handles- Remote keyless entry & perimeter anti-theft alarm
- Secondary glove box- SecuriLock anti-theft ignition- Tilt steering wheel
- Turbo boost gauge & air filter minder
- Unique King Ranch chaparral brown leather heated captains chairs
- Unique King Ranch console w/chaparral brown leather-covered lid & armrests, cupholders
- Unique King Ranch leather-wrapped steering wheel w/audio & SYNC controls
- Unique bar & shield logo center finish panel
- Unique black front/rear floor mats w/Harley-Davidson script
- Unique black leather-wrapped steering wheel w/audio & SYNC controls
- Unique ebony door trim inserts -inc: black leather-wrapped armrest, dusted copper leather-wrapped pull handles w/chrome accents, reflectors, upper & lower map pockets
- Unique front/rear floor mats w/King Ranch logo
- Unique key set w/Ford/Harley-Davidson logo on key ends
- Unique leather heated captains chairs
- Unique owners guide w/leather Ford Harley-Davidson F-Series Super Duty logo embossed portfolio
- Unique pwr adjustable performance pedals w/memory- Universal garage door opener
- Vinyl forward-fold rear bench seat

Exterior

- (4) 18" bright machined cast aluminum wheels -inc: bright center ornaments
- (4) LT275/65R20E all-terrain BSW tires -inc: LT275/70R18E all-terrain BSW spare tire (REQ: 99R Engine)
- (4) LT275/70R18E all-terrain OWL tires- (5) LT245/75R17E all-season BSW tires
- (5) LT275/70R18E all-season BSW tires
- 17" 5-spoke cast aluminum wheels w/bright center ornaments
- 17" argent painted steel wheels w/painted hub covers & center ornaments
- 18" polished forged aluminum wheels
- 18" premium forged polished aluminum wheels w/bright center ornaments
- 6" angular painted step bars- Accent color bodyside moldings
- Accent color box top & tailgate moldings - Accent color front bumper
- Accent color illuminated 6" angular step bars - Accent color rear bumper w/step pad
- Accent color wheel lip moldings- Autolamp/rainlamp dual beam jewel effect headlamps
- Billet grille w/body-color surround & medium platinum insert- Black door handles
- Black painted grille- Black painted rear bumper
- Black painted steel front bumper w/grained mold-in-color top cover
- Body-color billet grille w/body-color surround- Body-color door handles
- Body-color front bumper- Body-color mirror caps- Body-color rear bumper
- Body-color wheel lip moldings- Box-rail & tailgate top-edge moldings
- Cabelas tailgate badge, box decals & bed mat
- Chrome front bumper w/glossy body-color top cover- Chrome rear bumper
- Dark shadow grey front bumper- Dark shadow grey rear bumper
- Dual beam jewel effect headlamps- Fog lamps- Front fender vents

- Dual beam jewel effect headlamps- Fog lamps- Front/rear vents
- Front/rear license plate brackets- Full-size spare tire w/lock & carrier
- Grille w/medium platinum insert & chrome surround
- Illuminated chrome tubular step bars w/unique Harley-Davidson bar & shield logo
- Interval windshield wipers- King Ranch fender badges
- Manual telescoping trailer tow mirrors w/manual glass
- Manual telescoping trailer tow mirrors w/pwr heated glass, heated spotter mirror
- Pickup box/cargo lights
- PowerScope pwr telescoping & folding heated trailer tow mirrors -inc: turn signals, integrated clearance lights, heated convex spotter mirror
- Pwr sliding rear window- Rear privacy glass
- Removable locking tailgate w/black handle & Tailgate Assist
- Sealed beam halogen headlamps- Solar tinted glass
- Solar tinted windshield & front door glass - Underhood service light
- Unique 20" polished forged aluminum wheels w/chrome lug nuts & Harley- Davidson bar & shield on center cap
- Unique Ford/Harley-Davidson vanity license plate
- Unique Harley-Davidson F-Series Super Duty badges on front fender & tailgate
- Unique Harley-Davidson autolamp/rainlamp headlamps
- Unique chrome grille w/accent color insert
- Unique windshield w/bar & shield dot pattern & alliance logo

Safety

- (4) air registers w/positive shut-off- Accessory delay- Air conditioning
- Air conditioning w/chrome ringed black vents
- Air conditioning w/chrome ringed silver metallic vents - All-weather front/rear floor mats
- Auxiliary pwr point- Black carpeting
- Black instrumentation -inc: tachometer, speedometer, oil pressure, coolant temp, fuel gauge, indicator lights, message center w/odometer, trip odometer, engine hour meter, warning messages, transmission temp gauge, distance-to-empty, average fuel economy, unique metallic patterned applique
- Black instrumentation -inc: tachometer, speedometer, oil pressure, coolant temp, fuel gauge, indicator lights, message center w/odometer, trip odometer, engine hour meter, warning messages, voltmeter, distance-to-empty, average fuel economy
- Black leather-wrapped steering wheel w/audio controls- Black vinyl full-floor covering
- Carpet delete- Cloth 40/20/40 split bench seat -inc: armrest, cupholders, storage
- Cloth two-tone captain chairs -inc: stitched Cabelas logo on seat back, floor console (REQ: 17L Cabelas Pkg)
- Color-keyed carpet full-floor covering- Color-keyed cloth headliner
- Color-keyed door trim panel -inc: color-keyed soft armrest, pwr switch bezel, molded upper applique, upper & lower map pockets, grab handle & reflector
- Color-keyed door trim panel -inc: soft armrest, grab handle, reflector, woodgrain upper applique, upper & lower map pockets
- Color-keyed door trim panel -inc: soft armrest, grab handle, reflector, woodgrain upper applique, upper & lower map pockets, King Ranch Chaparral leather inserts
- Color-keyed leather-wrapped steering wheel w/audio & SYNC controls
- Color-keyed molded door trim panel-inc: hard armrest, grab handle, reflector
- Color-keyed scuff plates- Cruise control- Dash-top tray
- Door trim panel -inc: soft armrest, pwr switch bezel, metallic-patterned applique, upper & lower map pockets, grab handle & reflector
- Driver & front passenger grab handles- Driver & front passenger manual lumbar support
- Driver manual lumbar support
- Dual color-keyed cloth sunvisors-inc: driver-side map strap, dual covered lighted mirrors
- Dual color-keyed cloth sunvisors-inc: driver-side pocket, passenger-side mirror insert
- Dual color-keyed cloth sunvisors-inc: dual covered mirrors- Dual color-keyed coat hooks
- Dual zone electronic automatic temperature control (EATC)- Ebony carpeting
- Electrochromic rearview mirror w/built-in microphone for SYNC
- FlexFold 60/40 rear bench seat w/fold-flat feature, grocery hooks, dual cupholders, tray, steel load floor
- FlexFold 60/40 rear bench seat w/fold-flat feature, grocery hooks, dual cupholders, tray, steel load floor, under seat lockable stowage
- Front door operated dome lamp w/time delay off & IP switch
- Front passenger-side roof ride handle- Front/rear color-keyed carpeted floor mats
- Front/rear map lamps- Glove box
- HD vinyl bench seat w/recline & integrated armrest -inc: cupholders in armrest (w/213 ESOF Transfer Case, REQ: 445 or 447 Manual Trans)
- Instrument panel mounted dual cupholders
- Instrument panel mounted storage bin & trash bag hook
- Leather luxury captain chairs w/console
- Metallic-faced instrumentation -inc: tachometer, speedometer, oil pressure, coolant temp, fuel gauge, indicator lights, enhanced message center w/odometer, trip odometer, engine hour meter, warning messages, trip computer (compass, autolamp configuration & status, system check, language selection), distance-to-empty, average fuel economy, woodgrain panel inserts, transmission temp gauge
- Metallic-faced instrumentation -inc: tachometer, speedometer, oil pressure, coolant temp, fuel gauge, indicator lights, enhanced message center w/odometer, trip odometer, engine

hour meter, warning messages, trip computer (compass, autolamp configuration & status, system check, language selection), transmission temp gauge, distance-to-empty, average fuel economy, woodgrain panel inserts

- Overhead console-inc: garage door opener & sunglass bin
- Pwr adjustable pedals w/memory- Pwr door locks w/backlit switches
- Pwr door locks w/backlit switches, autolock & auto unlock, SecuriCode keyless entry keypad
- Pwr driver & front passenger seats- Pwr driver & front passenger seats w/driver memory
- Pwr windows w/driver one-touch-down & backlit switches- Rear armrests w/cupholders
- Rear seating roof ride handles- Remote keyless entry & perimeter anti-theft alarm
- Secondary glove box- SecuriLock anti-theft ignition- Tilt steering wheel
- Turbo boost gauge & air filter minder
- Unique King Ranch chaparral brown leather heated captains chairs
- Unique King Ranch console w/chaparral brown leather-covered lid & armrests, cupholders
- Unique King Ranch leather-wrapped steering wheel w/audio & SYNC controls
- Unique bar & shield logo center finish panel
- Unique black front/rear floor mats w/Harley-Davidson script
- Unique black leather-wrapped steering wheel w/audio & SYNC controls
- Unique ebony door trim inserts -inc: black leather-wrapped armrest, dusted copper leather-wrapped pull handles w/chrome accents, reflectors, upper & lower map pockets
- Unique front/rear floor mats w/King Ranch logo
- Unique key set w/Ford/Harley-Davidson logo on key ends
- Unique leather heated captains chairs
- Unique owners guide w/leather Ford Harley-Davidson F-Series Super Duty logo embossed portfolio
- Unique pwr adjustable performance pedals w/memory- Universal garage door opener
- Vinyl forward-fold rear bench seat

Mechanical

- (2) front tow hooks- 12.5K trailer hitch receiver-inc: 2" hitch - 135-amp HD alternator
- 157-amp HD alternator- 2-ton mechanical jack
- 3.55 axle ratio w/limited slip rear axle (REQ: 99R Engine)
- 3.73 axle ratio (REQ: 99S Engine)
- 3.73 axle ratio w/limited slip rear axle (REQ: 99S Engine) - 4-wheel drive
- 5.4L SOHC 24-valve EFI Triton V8 engine
- 6-3/4' pickup box w/chrome tie-down hooks, partitionable & stackable storage & rubber bed mat w/Harley-Davidson bar & shield logo
- 6-3/4' pickup box-inc: (4) tie-down hooks, partitionable & stackable storage
- 6-speed manual transmission w/OD -inc: PTO provision (REQ: 99S or 99Y Engine)
- 6.4L OHV turbo-diesel Power Stroke V8 engine -inc: 135-amp HD alternator, turbo boost gauge, air filter minder *Includes winter front grille cover in AK, CO, ID, IA, ME, MI, MN, MT, NH, NY, ND, SD, VT, WI, WY* (REQ: 425 Emissions)
- 8' pickup box w/chrome tie-down hooks, partitionable & stackable storage & rubber bed mat w/Harley-Davidson bar & shield logo
- 8' pickup box-inc: (6) tie-down hooks, partitionable & stackable storage
- Chrome exhaust tip- Chrome front tow hooks
- Electric shift-on-the-fly transfer case -inc: auto-locking front hubs w/manual override, instrument panel rotary control
- Front stabilizer bar- HD gas shock absorbers- Manual transfer case & hubs
- Mono-beam front axle w/coil spring suspension- Pwr 4-wheel disc brakes w/hydro-boost
- Pwr 4-wheel disc brakes w/vacuum boost- Pwr steering w/steering damper
- Rancho-branded specially-tuned shock absorbers
- Stationary elevated engine idle control (SEIC)
- TorqShift 5-speed automatic transmission w/OD -inc: tow/haul mode (w/213 ESOF Transfer Case, includes secondary glovebox, I/P mounted cupholders) (REQ: 99S or 99Y Engine)
- TorqShift 5-speed automatic transmission w/OD -inc: tow/haul mode (w/213 ESOF Transfer Case, includes secondary glovebox, I/P mounted cupholders) (REQ: 99R Engine)
- Trailer brake controller
- Trailer brake controller *w/66D Pickup Box Delete, 7 & 4 way combo trailer tow socket & bracket deleted*
- Trailer tow pkg-inc: 7-wire harness w/relays, 7/4 pin combination connector

Option Packages

Factory Installed Packages

-
6.4L OHV TURBO-DIESEL POWER
STROKE V8 ENGINE
-inc: 135-amp HD alternator, turbo
boost gauge, air filter minder \$7,835

-
Option Packages Total
\$7,835

Carrick's Autos
carricksautos.com
972-945-1220
605 Coit Rd
Plano, TX 75075

© 2023 AutoRevo - All rights reserved. - Powered by [AutoRevo](#)