

# 2000 Chevrolet Blazer LS 4X4

Lance Janke 6198860546

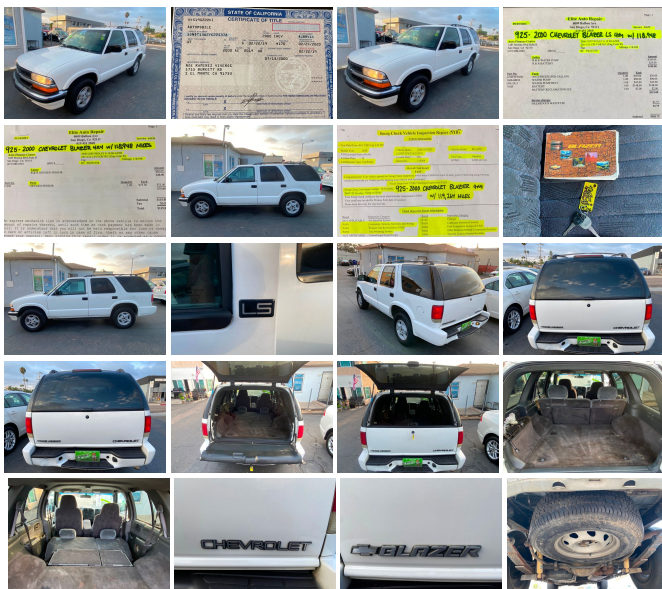
View this car on our website at [autocentersd.com/7152062/ebrochure](http://autocentersd.com/7152062/ebrochure)



Our Price **\$4,995**

## Specifications:

<b>Year:</b>	2000
<b>VIN:</b>	1GNDT13W2YK225378
<b>Make:</b>	Chevrolet
<b>Stock:</b>	925
<b>Model/Trim:</b>	Blazer LS 4X4
<b>Condition:</b>	Pre-Owned
<b>Body:</b>	SUV
<b>Exterior:</b>	Summit White
<b>Engine:</b>	4.3L (262) SFI V6 (VORTEC) ENGINE
<b>Interior:</b>	Medium Gray Cloth
<b>Mileage:</b>	118,941
<b>Drivetrain:</b>	4 Wheel Drive
<b>Economy:</b>	City 16 / Highway 20



Vehicle History Report : as Of 04/27/2024

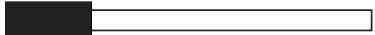


Snapshot

2000 CHEVROLET BLAZER LS



Damage reported: minor damage



MINOR MODERATE SEVERE

16 Service history records



2 Previous owners



Types of owners: Corporate, Personal



119,297 Last reported odometer reading



FREE CARFAX Report

See the full CARFAX Report for additional information

\*carfax Snapshot is a reflection of available information on the date the report was pulled. carfax is constantly being updated with new information and is subject to change at any time.

Our Location :



2000 Chevrolet Blazer LS 4X4

Auto Finance Center - 6198860546 - View this car on our website at [autocentersd.com/7152062/ebrochure](http://autocentersd.com/7152062/ebrochure)

## Installed Options

### Exterior

- Glossy Paint- Original Paint- Excellent Windshield- No Visible Scratches
- No Visible Dents- Excellent Trim- No Visible Rust- Detailed Ext and Int

### Audio

- AM/FM- Anti-Theft

### Comfort

- AC- Cruise- Tint- Climate Control- Leather Steering Whl- Power Steering- Clock
- Child Safety Locks- Daytime Running Lights- Cell Phone Hookup- Luggage Rack

### Mechanical

- 4-Wheel Drive- 4-Wheel Disc Brakes- Gasoline Fuel- Front Tow Hooks

### Safety

- Anti-Lock Brakes- Dual Front Airbags- Variable Wipers- Drivers Front Airbag

### History

- One Owner- Service Records- Dealer Maintained- Non-Smoker- All Keys
- No Known Problems- Dealer Inspected

INTEREST RATES ARE NOT THE SAME FOR EVERY INQUIRY. THE INTEREST RATE HAS MANY FACTORS SUCH AS CUSTOMERS HISTORY OF ON TIME PAYMENTS, DOWN PAYMENT AMOUNT, VEHICLE OF INTEREST, ECT. TYPICAL DOWN PAYMENT REQUIREMENT IS ABOUT 20% & AS HIGH AS 50% OF TOTAL COST OF VEHICLE. TOTAL COST OF VEHICLE INCLUDES THE SALES PRICE, SALES TAX, REGISTRATION FEES, DMV PAPERWORK PROCESING FEE, & CA. SMOG CERTIFICATE FEE. THE PRICE ADVERTISED IS ONLY THE SALES PRICE. IT DOES NOT INCLUDE THE FEES LISTED ABOVE.

Auto Finance Center

[autocentersd.com](http://autocentersd.com)

6198860546

1464 Morena Blvd.

San Diego, CA 92110

© 2024 AutoRevo - All rights reserved. - Powered by AutoRevo