



2011 Ram 1500 Big Horn. FULLY SERVICED!~ 5.7 HEMI,
WITH A 5'7" SHORT-BED, SIDE STEPS.

Steve Sherman (952) 303-1411

Our Price \$10,995

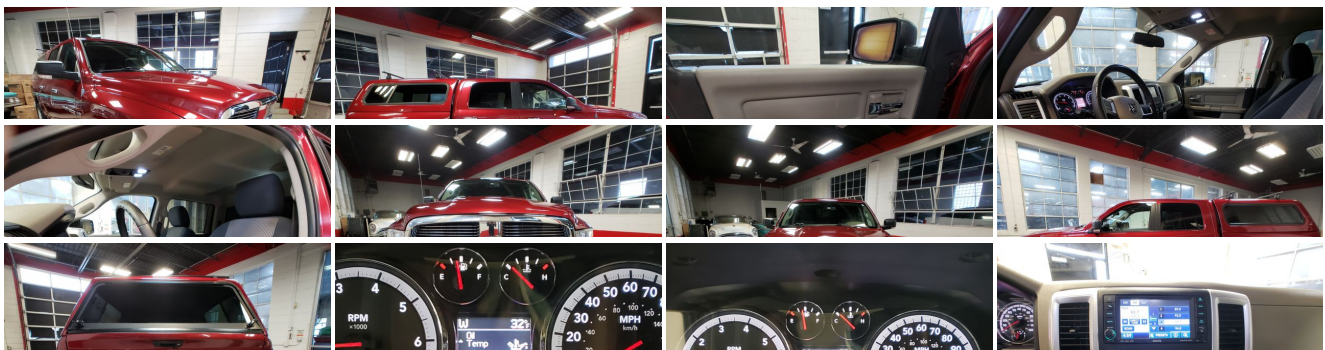
View this vehicle on our website at automotion.autorevo.com



(952) 303-1411

4419 Excelsior Blvd , Saint Louis Park, MN 55416

Photos
Details
Contact





Specifications:

Year:	2011
VIN:	1D7RV1CT8BS613503
Make:	Ram 1500 Big Horn. FULLY SERVICED!~
Stock:	am223503
Model/Trim:	5.7 HEMI, WITH A 5'7" SHORT-BED, SIDE STEPS.
Condition:	Pre-Owned
Body:	Pickup Truck
Exterior:	Flame Red
Engine:	5.7L V8 HEMI MULTI-DISPLACEMENT VVT ENGINE
Interior:	Gray Cloth
Mileage:	215,506
Drivetrain:	4 Wheel Drive
Economy:	City 13 / Highway 19

Vehicle Description

EXCELLENT RUNNER, WITH THE 5.7 LITRE HEMI, AND A 5'7" BOX. SIDE STEPS AND A SHELL COMPLETE THE PACKAGE. WITH GOOD TIRES, GOOD BRAKES, A STRONG MOTOR, AND TRANSMISSION, THIS ONE IS READY. WE REPLACED THE TRANSFER CASE, SERVICED THE TRANSMISSION, FRESH FLUIDS AND OIL, AND A COOLANT FLUSH. SHE IS READY TO GO TO WORK!~

AUTOMOTION HAS YOUR NEEDS COVERED. EASY FINANCING OPTIONS, TRADES WELCOMED, WARRANTIES OFFERED, AND OUR SALES CLIENTS ENJOY HUGE DISCOUNTS IN OUR SHOP.

Installed Options

Interior

- 12V aux pwr outlet- Cloth 40/20/40 bench seat w/manual adjusters
- Folding rear bench seat- Front/rear floor mats- Leather-wrapped steering wheel
- Passenger side visor vanity mirror- Pwr door locks
- Pwr front windows w/1-touch up/down- Remote keyless entry
- Steering wheel audio controls- 2nd row in-floor storage bins- Air conditioning
- Carpeted floor covering- Chrome accent shift knob- Color-keyed instrument panel bezel
- Column-mounted shifter- Day/night rearview mirror- Dual assist handles
- Floor tunnel insulation
- Instrument cluster w/display screen -inc: temp & compass gauge, trip computer, vehicle info center
- Overhead console- Premium vinyl door trim w/map pocket - Pwr accessory delay
- Rear dome lamp- Rear under seat storage compartment
- Sentry Key theft deterrent system - Speed control- Storage tray- Tilt steering column

Exterior

- 20" x 8" aluminum wheels- Black folding pwr heated outside mirrors- Fog lamps
- Locking lug nuts- P275/60R20 all-season BSW tires- Pwr sliding rear window
- (4) full-size conventional doors- 17" steel spare wheel- Automatic headlamps
- Body color fuel filler door- Body-color upper front fascia
- Body-color/chrome door handles- Bright front bumper- Bright rear bumper
- Bright/bright billet grille- Cargo lamp- Deep tinted windows- Front bumper sight shields
- Front license plate bracket- Front wheel air deflectors
- Full-size temporary use spare tire- Locking tailgate- Quad beam halogen headlamps
- Rear wheel air deflectors- Tire carrier winch- Variable intermittent windshield wipers

Safety

- 12V aux pwr outlet- Cloth 40/20/40 bench seat w/manual adjusters
- Folding rear bench seat- Front/rear floor mats- Leather-wrapped steering wheel
- Passenger side visor vanity mirror- Pwr door locks
- Pwr front windows w/1-touch up/down- Remote keyless entry
- Steering wheel audio controls- 2nd row in-floor storage bins- Air conditioning
- Carpeted floor covering- Chrome accent shift knob- Color-keyed instrument panel bezel
- Column-mounted shifter- Day/night rearview mirror- Dual assist handles
- Floor tunnel insulation
- Instrument cluster w/display screen -inc: temp & compass gauge, trip computer, vehicle info center
- Overhead console- Premium vinyl door trim w/map pocket - Pwr accessory delay
- Rear dome lamp- Rear under seat storage compartment
- Sentry Key theft deterrent system - Speed control- Storage tray- Tilt steering column

Mechanical

- 5-speed automatic transmission- Class IV receiver hitch- 160-amp alternator
- 3.55 axle ratio- 5' 7" pickup box- 5.7L V8 Hemi multi-displacement VVT engine
- 7-pin wiring harness- 700-amp maintenance-free battery- Anti-lock 4-wheel disc brakes
- Center hub- Dual rear exhaust- Electronic shift-on-demand transfer case
- Electronically controlled throttle- Four wheel drive- Front stabilizer bar
- HD engine cooling- HD front shock absorbers- HD rear shock absorbers
- HD transmission oil cooler- Next generation engine controller
- Pwr rack & pinion steering- Rear stabilizer bar- Tip start electronic starting feature
- Trailer tow w/4-pin connector wiring

Option Packages

Factory Installed Packages

5.7L V8 HEMI MULTI-DISPLACEMENT VVT ENGINE	\$1,310
Option Packages Total	\$1,310

Auto Motion

Auto Motion

View this car on our website at automotion.autorevo.com/7151778

Website: automotion.autorevo.com

Phone: (952) 303-1411

Map: [4419 Excelsior Blvd, Saint Louis Park, MN 55416](#)

