

## 2011 BMW 550 X-DRIVE, SMOOTH & POWERFUL, M APPEARANCE PKG, M WHEELS, ONE OWNER, ALL SERVICE COMPLETED IN IT'S HISTORY!~

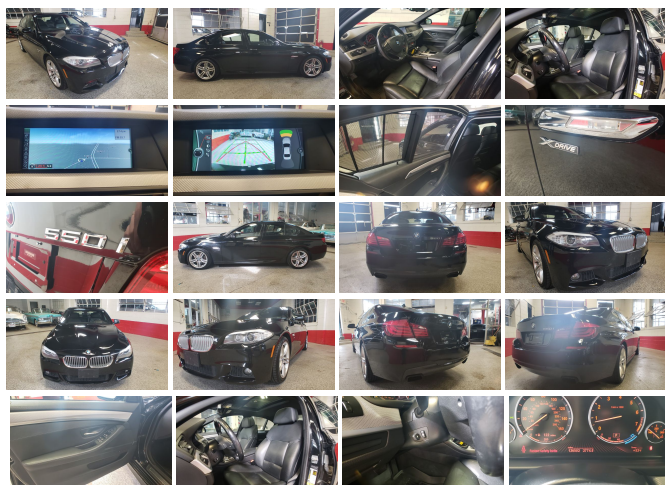
View this car on our website at [automotion.autorevo.com/7151775/ebrochure](http://automotion.autorevo.com/7151775/ebrochure)



Our Price **\$12,995**

### Specifications:

<b>Year:</b>	2011
<b>VIN:</b>	WBAFU9C59BC786700
<b>Make:</b>	BMW 550 X-DRIVE, SMOOTH & POWERFUL, M
<b>Stock:</b>	am236700
<b>Model/Trim:</b>	APPEARANCE PKG, M WHEELS, ONE OWNER, ALL SERVICE COMPLETED IN IT'S HISTORY!~
<b>Condition:</b>	Pre-Owned
<b>Body:</b>	Sedan
<b>Exterior:</b>	Black Sapphire Metallic
<b>Engine:</b>	4.4L 32-valve twin-turbocharged V8 engine -inc: 4-overhead camshafts, piezo direct fuel injection, double-VANOS steplessly variable valve timing
<b>Interior:</b>	Black Leather
<b>Mileage:</b>	126,006
<b>Drivetrain:</b>	All Wheel Drive
<b>Economy:</b>	City 16 / Highway 24



THIS BEAUTIFUL BMW HAS THE LOOK, THE POWER, AND THE OPTIONS YOU CRAVE. HEATED STEERING WHEEL, HEATED FRONT, AND HEATED REAR SEATS, REAR SUNSHADE WITH REAR SIDE SUNSHADES, SILVER CARBON FIBER INTERIOR TRIM, POWER MOONROOF, BLUETOOTH W/AUDIO, JUST COMPLETELY LOADED UP!~ IT'S AS FAST AS YOU WOULD EXPECT THE 550 WITH THE 4.4 LITRE TWIN TURBO SHOULD BE, AND AS SMOOTH AS ANY OTHER LUXURY CAR ON THE ROAD. IN OUR SHOP WE DID A FULL SYNTHETIC OIL CHANGE, PUT A NEW BATTERY IN IT, NEW REAR COIL SPRINGS, TWO FUEL INJECTORS, AND BRAKES ALL AROUND! AND SHE IS BEYOND READY!~

AUTOMOTION HAS ALL YOUR NEEDS COVERED. EASY FINANCING OPTIONS, TRADES ARE WELCOMED, AND WARRANTIES ARE OFFERED!~ ON TOP OF THAT, OUR SALES CLIENTS GET ABSOLUTELY SPOILED IN OUR FULL-SERVICE SHOP. IN FACT, YOU CAN GET THIS BEAUTY, PLUS A 3 YEAR WARRANTY CONTRACT ALL FOR ONLY \$14775.00, AND THIS IS GOOD COVERAGE, NOT JUST POWERTRAIN!~ CALL ME AT 952-303-1411 FOR DETAILS.

2011 BMW 550 X-DRIVE, SMOOTH & POWERFUL, M APPEARANCE PKG, M WHEELS, ONE OWNER, ALL SERVICE COMPLETED IN IT'S HISTORY!~

Auto Motion - (952) 303-1411 - View this car on our website at [automotion.autorevo.com/7151775/ebrochure](http://automotion.autorevo.com/7151775/ebrochure)

#### Our Location :



2011 BMW 550 X-DRIVE, SMOOTH & POWERFUL, M APPEARANCE PKG, M WHEELS, ONE OWNER, ALL SERVICE COMPLETED IN IT'S HISTORY!~

Auto Motion - (952) 303-1411 - View this car on our website at [automotion.autorevo.com/7151775/ebrochure](http://automotion.autorevo.com/7151775/ebrochure)

## Installed Options

### Interior

- 10-way power-adjustable front bucket seats -inc: dual 4-way lumbar support, driver seat memory
- 3-spoke leather-wrapped multi-function steering wheel -inc: controls for audio system, cruise control, Bluetooth wireless communication for hands-free mobile phone
- Additional 12-V pwr sockets (Start of production 9-1-10)
- Anti-theft alarm system -inc: keyhead remote operation, interior motion detector
- Dakota leather upholstery & door trim -inc: seat surfaces, armrests in center console & doors, headrests for front seats & outer rear seats, gear shift lever boot
- Dark wood interior trim
- Dual-zone automatic climate control -inc: separate left/right temperature & air distribution controls, automatic air recirculation
- Dynamic cruise control- Fully finished trunk w/interior & remote trunk release
- Power outlet in front passenger footwell, front center console storage compartment, rear center console, trunk
- Remote keyless entry security alarm system -inc: selective unlocking & double-lock feature (programmed at BMW center), remote trunk opening, interior motion detector, panic feature, engine immobilizer
- Auto-dimming interior rearview mirror- Black Panel display technology
- Condition-based service display w/additional functions accessible through iDrive system
- Dual cupholders in front & rear- Dual front sun visors w/illuminated mirrors
- Electronic analog speedometer & tachometer- Floor mats
- Fold-up rear seat center armrest
- Front map lights & rear reading lights w/separate controls for the left & right
- Glove compartment

- Hard drive-based navigation system -inc: voice feedback, voice command system, real time traffic information, online information services
- Integrated 3-button universal garage door opener - Interior ambiance lighting
- Interior courtesy lights w/auto-dimming function
- Micro-filter ventilation system -inc: replaceable active-charcoal filters
- Open storage compartments in all doors & front seatback storage
- Power tilt & telescopic steering wheel -inc: automatic tilt-up for easy entry & exit, steering wheel memory
- Power windows -inc: key-off & "one touch" up & down operation both front & rear, anti-trapping feature, opening from remote, closing from exterior lock
- Rear window defroster
- Service interval indicator & expanded check control vehicle monitor system
- Vehicle & key memory
- iDrive system -inc: on-board computer, controller, (8) programmable memory buttons

---

## Exterior

- 18" x 8.0" star-spoke light alloy wheels (style 330) -inc: P245/45R18 run-flat all-season tires
- 2-way pwr moonroof -inc: remote expanded "one-touch" operation, anti-trapping feature, sliding interior sunshade
- Adaptive brake lights- Adaptive headlight control- Auto-dimming exterior sideview mirrors
- Automatic headlight on/off control- Front foglights
- Power adjustable heated folding body-color sideview mirrors -inc: mirror memory, automatic tilt-down of passenger side mirror (when car is shifted into reverse gear)
- Rain-sensing windshield wipers w/adjustable speed
- Xenon headlights -inc: dynamic auto-leveling, LED corona headlight-rings, cornering lights

---

## Safety

- 10-way power-adjustable front bucket seats -inc: dual 4-way lumbar support, driver seat memory
- 3-spoke leather-wrapped multi-function steering wheel -inc: controls for audio system, cruise control, Bluetooth wireless communication for hands-free mobile phone
- Additional 12-V pwr sockets (Start of production 9-1-10)
- Anti-theft alarm system -inc: keyhead remote operation, interior motion detector
- Dakota leather upholstery & door trim -inc: seat surfaces, armrests in center console & doors, headrests for front seats & outer rear seats, gear shift lever boot
- Dark wood interior trim
- Dual-zone automatic climate control -inc: separate left/right temperature & air distribution controls, automatic air recirculation
- Dynamic cruise control- Fully finished trunk w/interior & remote trunk release
- Power outlet in front passenger footwell, front center console storage compartment, rear center console, trunk
- Remote keyless entry security alarm system -inc: selective unlocking & double-lock feature (programmed at BMW center), remote trunk opening, interior motion detector, panic feature, engine immobilizer
- Auto-dimming interior rearview mirror- Black Panel display technology
- Condition-based service display w/additional functions accessible through iDrive system
- Dual cupholders in front & rear- Dual front sun visors w/illuminated mirrors
- Electronic analog speedometer & tachometer- Floor mats
- Fold-up rear seat center armrest
- Front map lights & rear reading lights w/separate controls for the left & right
- Glove compartment
- Hard drive-based navigation system -inc: voice feedback, voice command system, real time traffic information, online information services
- Integrated 3-button universal garage door opener - Interior ambiance lighting
- Interior courtesy lights w/auto-dimming function
- Micro-filter ventilation system -inc: replaceable active-charcoal filters
- Open storage compartments in all doors & front seatback storage
- Power tilt & telescopic steering wheel -inc: automatic tilt-up for easy entry & exit, steering wheel memory
- Power windows -inc: key-off & "one touch" up & down operation both front & rear, anti-trapping feature, opening from remote, closing from exterior lock
- Rear window defroster
- Service interval indicator & expanded check control vehicle monitor system
- Vehicle & key memory
- iDrive system -inc: on-board computer, controller, (8) programmable memory buttons

---

## Mechanical

- 8-speed Steptronic automatic transmission -inc: sport & manual shift modes, adaptive transmission control (ATC)
- 4.4L 32-valve twin-turbocharged V8 engine -inc: 4-overhead camshafts, piezo direct fuel injection, double-VANOS steplessly variable valve timing
- Brake energy regeneration system- Direct ignition system w/knock control
- Electronic limited-slip differential- Electronically controlled engine cooling (map cooling)

- Engine start/stop button- Front multi-link double-wishbone aluminum suspension
  - Rear multi-link integral-V aluminum suspension- Twin-tube gas-pressure shock absorbers
  - Vehicle-speed-sensitive variable-assist (Servotronic) variable-ratio power steering
  - xDrive all wheel drive system
- 

---

Auto Motion

[automotion.autorevo.com](https://automotion.autorevo.com)

(952) 303-1411

4419 Excelsior Blvd

Saint Louis Park, MN 55416

© 2024 AutoRevo - All rights reserved. - Powered by AutoRevo