

2022 Jeep Wrangler Unlimited Rubicon 4X4 DIESEL,SKY TOP,DUPONT KEVLAR,LIFT

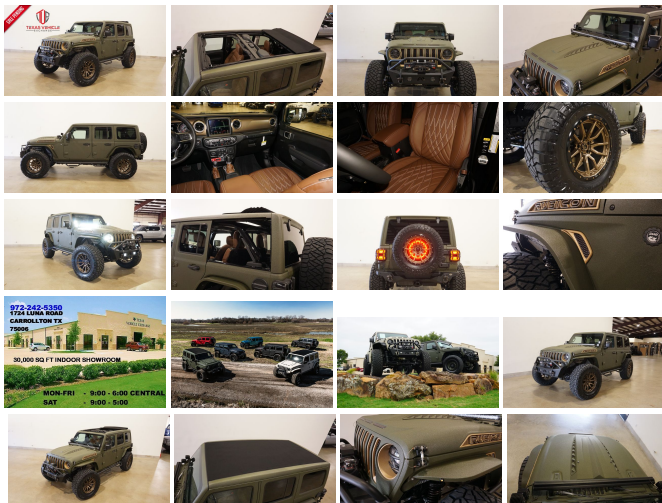
View this car on our website at tveauto.com/7150867/ebrochure



Our Price **\$99,900**

Specifications:

Year:	2022
VIN:	1C4JJXFMXNW267655
Make:	Jeep
Stock:	267655
Model/Trim:	Wrangler Unlimited Rubicon 4X4 DIESEL,SKY TOP,DUPONT KEVLAR,LIFT
Condition:	Pre-Owned
Body:	SUV
Exterior:	Green
Engine:	ENGINE: 3.0L V6 TURBO DIESEL W/ESS G3
Interior:	Brown Leather
Transmission:	TRANSMISSION: 8-SPEED AUTOMATIC (8HP75)
Mileage:	54
Drivetrain:	4 Wheel Drive
Economy:	City 17 / Highway 23



NATION WIDE FINANCING

SUBMIT CREDIT APP [WWW.TVEAUTO.COM](https://www.tveauto.com)

OR CALL 972-242-5350

"TANK GREEN EDITION"

CUSTOM BUILT **KEVLAR** 2022 JEEP
WRANGLER JL UNLIMITED RUBICON 4X4
WITH 26R PACKAGE

UPGRADES INCLUDE:

- * TANK GREEN KEVLAR COATING WITH KING RANCH BROWN ACCENTS
- * 3.0L V6 TURBO DIESEL ENGINE WITH START STOP
- * SKY ONE-TOUCH POWER TOP WITH REMOVABLE REAR QUARTER WINDOWS
- * CUSTOM ALEA BROWN LEATHER WITH TAN STITCHING
- * FACTORY REMOTE START
- * REMOTE PROXIMITY KEYLESS ENTRY
- * COLD WEATHER GROUP
- * SAFETY GROUP
- * FACTORY 8.4 INCH TOUCH SCREEN NAVIGATION WITH HD AM/FM/SIRIUS STEREO & ALPINE PREMIUM AUDIO SYSTEM
- * FACTORY BACK-UP CAMERA
- * U-CONNECT
- * FAB FOURS STUBBY FRONT BUMPER WITH LED FOGLIGHTS
- * FRONT D-RINGS & ISOLATORS (KING RANCH BROWN)
- * SMITTYBILT NEW GEN II "X20" 10,000 LB WATERPROOF AND WIRELESS CONTROL WINCH WITH SYNTHETIC ROPE
- * FACTOR 55 PROLINK (BLACK)
- * FACTORY MESH GRILLE PAINTED (KING RANCH BROWN)
- * FACTORY LED HEADLIGHTS
- * RUGGED RIDGE BLACK HEADLIGHT GUARDS
- * NEW JL CUSTOM VENTED HOOD
- * DRAKE OFF ROAD HOOD LATCHES
- * DV8 OFF ROAD JL SLIM STEEL FENDER FI ARFS

- * DV8 OFF ROAD FRONT & REAR INNER FENDERS
- * RUBICON EXPRESS 2.5" LIFT KIT WITH TERAFLX FALCON SHOCKS
- * TERAFLX FALCON STABILIZER KIT
- * SUSPENSION PARTS PAINTED (KING RANCH BROWN)
- * MOPAR AUXILIARY SWITCH BANK KIT
- * 50" LED LIGHT BAR AND 4 RIGID INDUSTRIES DUALY D2 LED PILLAR LIGHTS
- * SMITTYBILT BLACK TUBULAR STEPS
- * EVOLUTION 2 BLACK LED TAIL LIGHTS
- * RUGGED RIDGE BLACK TAIL LIGHT GUARDS
- * RUGGED RIDGE SPARTACUS HD HINGE KIT
- * RUGGED RIDGE LED THIRD BRAKE LIGHT RING
- * DV8 OFF ROAD REAR BUMPER WITH REAR PARK DISTANCE SENSORS
- * REAR D-RINGS & ISOLATORS (KING RANCH BROWN)
- * ALL WEATHER FLOOR MATS
- * TAZER JL PROGRAMMER WITH SPEEDOMETER CALIBRATION
- * 20" FUEL BRONZE "REBEL 5" WHEELS
- * BRAND NEW NITTO RIDGE GRAPPLER 37X13.50R/20 TIRES

WE BUILD EVERY JEEP WITH PRIDE! DO NOT HESITATE TO CALL US WITH THIS JEEP BUILD. WE CAN MAKE CHANGES TO THIS JEEP BUILD OR CUSTOM BUILD ANY JEEP TO YOUR PREFERENCE. GIVE US A CALL @ 972-242-5350 OR STOP BY FOR A TEST DRIVE. 1704 LUNA DR IN

**TEST DRIVE. 1724 LUNA RD IN
CARROLLTON - 2 MILES NORTH OF 635.**

2022 Jeep Wrangler Unlimited Rubicon 4X4 DIESEL,SKY TOP,DUPONT KEVLAR,LIFT
Texas Vehicle Exchange - 972-242-5350 - View this car on our website at veauto.com/7150867/ebrochure

Our Location :



2022 Jeep Wrangler Unlimited Rubicon 4X4 DIESEL,SKY TOP,DUPONT KEVLAR,LIFT
Texas Vehicle Exchange - 972-242-5350 - View this car on our website at veauto.com/7150867/ebrochure

Installed Options

Interior

- 6-Way Driver Seat -inc: Manual Recline, Height Adjustment, Fore/Aft Movement and Manual Lumbar Support
- Front Seats w/Cloth Back Material and Manual Driver Lumbar
- Full Carpet Floor Covering -inc: Carpet Front And Rear Floor Mats
- Gauges -inc: Speedometer, Odometer, Voltmeter, Oil Pressure, Engine Coolant Temp, Tachometer, Inclinometer, Altimeter, Oil Temperature, Engine Hour Meter, Trip Odometer and Trip Computer
- Power 1st Row Windows w/Driver And Passenger 1-Touch Down
- Power Door Locks w/Autolock Feature
- Power Rear Windows and Removable 3rd Row Windows
- Premium Cloth Low-Back Bucket Seats- Proximity Key For Doors And Push Button Start
- Remote Keyless Entry w/Integrated Key Transmitter, Illuminated Entry and Panic Button
- Trip Computer- 2 12V DC Power Outlets
- 2 12V DC Power Outlets and 1 120V AC Power Outlet - 2 Seatback Storage Pockets
- 4-Way Passenger Seat -inc: Manual Recline and Fore/Aft Movement
- 4G LTE Wi-Fi Hot Spot Mobile Hotspot Internet Access
- 60-40 Folding Split-Bench Front Facing Fold Forward Seatback Premium Cloth Rear Seat
- Air Filtration- Analog Appearance- Cargo Space Lights
- Carpet Floor Trim, Carpet And Rubber Mat- Compass
- Cruise Control w/Steering Wheel Controls- Day-Night Auto-Dimming Rearview Mirror
- Delayed Accessory Power

Option Packages

Factory Installed Packages

ENGINE: 3.0L V6 TURBO DIESEL W/ESS G3 -inc: Selective Catalytic Reduction (Urea), Non-Lock Fuel Cap w/Discriminator, Gray EcoDiesel Badge, GVWR: 6,100 lbs, 18.3 Gallon Fuel Tank, 3.73 Rear Axle Ratio	\$3,510
TRANSMISSION: 8-SPEED AUTOMATIC (8HP75) -inc: Tip Start, Selec-Speed Control	\$2,500
COLD WEATHER GROUP -inc: Heated Steering Wheel, Heated Front Seats	\$1,195
SAFETY GROUP -inc: ParkSense Rear Park Assist System, Blind Spot & Cross Path Detection	\$1,145
SKY 1-TOUCH POWER TOP -inc: Rear Window Defroster, Rear Window Wiper/Washer, Removable Rear Quarter Windows, Power Top Quarter Window Storage	\$4,145

Bag

QUICK ORDER PACKAGE 26R

-inc: Engine: 3.0L V6 Turbo Diesel w/ESS G3,
Transmission: 8-Speed Automatic (8HP75)

Option Packages Total

\$12,495

- Driver And Passenger Visor Vanity Mirrors w/Driver And Passenger Illumination
- Fade-To-Off Interior Lighting- Front And Rear Map Lights
- Front Center Armrest w/Storage
- Full Floor Console w/Locking Storage, 2 12V DC Power Outlets and 1 120V AC Power Outlet
- Garage Door Transmitter- HVAC -inc: Console Ducts- Illuminated Front Cupholder
- Illuminated Rear Cupholder
- Instrument Panel Bin, Dashboard Storage, Driver / Passenger And Rear Door Bins
- Interior Trim -inc: Colored Instrument Panel Insert, Metal-Look Door Panel Insert, Metal-Look Console Insert and Metal-Look Interior Accents
- Leather Steering Wheel- Locking Cargo Area Concealed Storage- Locking Glove Box
- Manual Adjustable Front Head Restraints and Foldable Rear Head Restraints
- Manual Tilt/Telescoping Steering Column- Outside Temp Gauge- Perimeter Alarm
- Redundant Digital Speedometer- Sentry Key Immobilizer
- SiriusXM Guardian Tracker System- Smart Device Integration- Systems Monitor
- Urethane Gear Shifter Material
- Voice Activated Dual Zone Front Automatic Air Conditioning

Exterior

- Auto On/Off Aero-Composite Halogen Daytime Running Headlamps w/Delay-Off
- Black Front Bumper w/2 Tow Hooks- Black Power Heated Side Mirrors w/Manual Folding
- Black Rear Bumper w/1 Tow Hook- Front Fog Lamps
- Manual Convertible Top w/Fixed Roll-Over Protection
- Tailgate/Rear Door Lock Included w/Power Door Locks
- Tires: LT285/70R17C BSW Off-Road- Wheels: 17" x 7.5" Machined w/Black Pockets
- Aluminum Spare Wheel- Black Door Handles- Black Side Windows Trim
- Black Wheel Well Trim and Black Fender Flares- Body-Color Grille w/Colored Accents
- Clearcoat Paint w/Badging- Conventional Rear Cargo Access- Deep Tinted Glass
- Full-Size Spare Tire Mounted Outside Rear
- Galvanized Steel/Aluminum/Magnesium Panels- Non-Lock Fuel Cap w/o Discriminator
- Removable Rear Window- Variable Intermittent Wipers

Safety

- 6-Way Driver Seat -inc: Manual Recline, Height Adjustment, Fore/Aft Movement and Manual Lumbar Support
 - Front Seats w/Cloth Back Material and Manual Driver Lumbar
 - Full Carpet Floor Covering -inc: Carpet Front And Rear Floor Mats
 - Gauges -inc: Speedometer, Odometer, Voltmeter, Oil Pressure, Engine Coolant Temp, Tachometer, Inclinometer, Altimeter, Oil Temperature, Engine Hour Meter, Trip Odometer and Trip Computer
 - Power 1st Row Windows w/Driver And Passenger 1-Touch Down
 - Power Door Locks w/Autolock Feature
 - Power Rear Windows and Removable 3rd Row Windows
 - Premium Cloth Low-Back Bucket Seats- Proximity Key For Doors And Push Button Start
 - Remote Keyless Entry w/Integrated Key Transmitter, Illuminated Entry and Panic Button
 - Trip Computer- 2 12V DC Power Outlets
 - 2 12V DC Power Outlets and 1 120V AC Power Outlet - 2 Seatback Storage Pockets
 - 4-Way Passenger Seat -inc: Manual Recline and Fore/Aft Movement
 - 4G LTE Wi-Fi Hot Spot Mobile Hotspot Internet Access
 - 60-40 Folding Split-Bench Front Facing Fold Forward Seatback Premium Cloth Rear Seat
 - Air Filtration- Analog Appearance- Cargo Space Lights
 - Carpet Floor Trim, Carpet And Rubber Mat- Compass
 - Cruise Control w/Steering Wheel Controls- Day-Night Auto-Dimming Rearview Mirror
 - Delayed Accessory Power
 - Driver And Passenger Visor Vanity Mirrors w/Driver And Passenger Illumination
 - Fade-To-Off Interior Lighting- Front And Rear Map Lights
 - Front Center Armrest w/Storage
 - Full Floor Console w/Locking Storage, 2 12V DC Power Outlets and 1 120V AC Power Outlet
 - Garage Door Transmitter- HVAC -inc: Console Ducts- Illuminated Front Cupholder
 - Illuminated Rear Cupholder
 - Instrument Panel Bin, Dashboard Storage, Driver / Passenger And Rear Door Bins
 - Interior Trim -inc: Colored Instrument Panel Insert, Metal-Look Door Panel Insert, Metal-Look Console Insert and Metal-Look Interior Accents
 - Leather Steering Wheel- Locking Cargo Area Concealed Storage- Locking Glove Box
 - Manual Adjustable Front Head Restraints and Foldable Rear Head Restraints
 - Manual Tilt/Telescoping Steering Column- Outside Temp Gauge- Perimeter Alarm
 - Redundant Digital Speedometer- Sentry Key Immobilizer
 - SiriusXM Guardian Tracker System- Smart Device Integration- Systems Monitor
 - Urethane Gear Shifter Material
 - Voice Activated Dual Zone Front Automatic Air Conditioning
-

Mechanical

- 4-Wheel Disc Brakes w/4-Wheel ABS, Front Vented Discs, Brake Assist and Hill Hold Control
- Brake Actuated Limited Slip Differential - Driver Selectable Front Locking Differential
- Driver Selectable Rear Locking Differential- Engine: 3.6L V6 24V VVT UPG I w/ESS
- Part-Time Four-Wheel Drive- Transmission: 6-Speed Manual- 1351# Maximum Payload
- 21.5 Gal. Fuel Tank- 220 Amp Alternator- 4.10 Rear Axle Ratio- 5 Skid Plates
- 50 State Emissions- 650CCA Maintenance-Free Battery w/Run Down Protection
- Auto Locking Hubs- Aux Battery- Electro-Hydraulic Power Assist Steering
- Engine Oil Cooler- Front Active w/Driver Control Anti-Roll Bar and Rear Anti-Roll Bar
- GVWR: 5,800 lbs- HD Shock Absorbers- Leading Link Front Suspension w/Coil Springs
- Manual Transfer Case- Performance Suspension- Single Stainless Steel Exhaust
- Solid Axle Rear Suspension w/Coil Springs- Stop-Start Dual Battery System
- Towing Equipment -inc: Trailer Sway Control

Texas Vehicle Exchange

tveauto.com

972-242-5350

1724 Luna Road

Carrollton, TX 75006

© 2024 AutoRevo - All rights reserved. - Powered by [AutoRevo](#)