

2008 Pontiac G6 GT

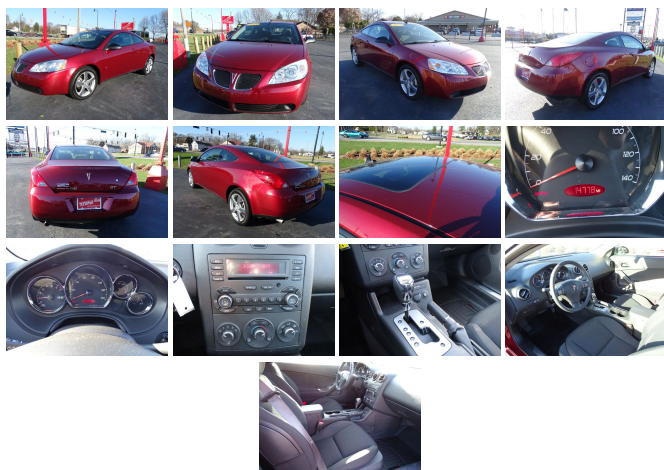
View this car on our website at wheelsunltd.com/7150854/ebrochure



Our Price **\$11,995**

Specifications:

Year:	2008
VIN:	1G2ZH17N484138916
Make:	Pontiac
Stock:	22-039
Model/Trim:	G6 GT
Condition:	Pre-Owned
Body:	Coupe
Exterior:	Performance Red Metallic
Engine:	ENGINE, 3.5L VARIABLE VALVE TIMING V6 SFI
Interior:	Ebony Cloth
Transmission:	TRANSMISSION, 4-SPEED AUTOMATIC, ELECTRONICALLY CONTROLLED WITH OVERDRIVE
Mileage:	14,778
Drivetrain:	Front Wheel Drive
Economy:	City 17 / Highway 26



2008 Pontiac G6 GT

Wheels Unlimited - (219) 464-3736 - View this car on our website at wheelsunltd.com/7150854/ebrochure

Our Location :



2008 Pontiac G6 GT

Wheels Unlimited - (219) 464-3736 - View this car on our website at wheelsunltd.com/7150854/ebrochure

Installed Options

Interior

- Air conditioning, single-zone manual- Brake handle, leather-wrapped
- Console, floor with floor shifter, integral armrest, lighted shift indicator, parking brake and storage compartment
- Cruise control, electronic with set and resume speed - Defogger, rear-window
- Door locks, power programmable with lockout protection and delayed locking
- Instrumentation, analog with speedometer, temperature, fuel, tachometer and trip odometer
- Lighting, interior with illuminated entry and theater dimming - Map pocket, driver seatback
- Map pocket, front passenger seatback- Mirror, inside rearview manual day/night
- Remote Keyless Entry, extended-range
- Seat adjuster, driver 4-way manual with power height adjustment and ratcheting lumbar
- Seat, rear 60/40 split-folding- Seats, 45/45 front bucket - Shift knob, leather-wrapped
- Steering column, tilt and telescopic- Steering wheel controls, mounted audio controls
- Steering wheel, leather-wrapped- Theft-deterrent system, vehicle, PASS-key III+
- Trunk release, power
- Visors, driver and front passenger vanity mirrors (Illuminated visor vanity mirrors)
- Windows, power with driver Express-Down

Exterior

- Daytime Running Lamps- Fog lamps, front, integral in fascia with projector beam
- Glass, Solar-Ray light-tinted, heat rejecting
- Headlamps, halogen composite with reflector optics, automatic exterior lamp control and 20-second delay off feature
- Mirrors, outside power-adjustable, Satin Black- Tires, P225/50R17 touring, blackwall
- Wheels, 17" (43.2 cm) Chrome-Tech cast aluminum
- Wipers, front intermittent, speed-sensitive, controlled-cycle

Safety

- Air conditioning, single-zone manual- Brake handle, leather-wrapped

- Console, floor with floor shifter, integral armrest, lighted shift indicator, parking brake and storage compartment
- Cruise control, electronic with set and resume speed - Defogger, rear-window
- Door locks, power programmable with lockout protection and delayed locking
- Instrumentation, analog with speedometer, temperature, fuel, tachometer and trip odometer
- Lighting, interior with illuminated entry and theater dimming - Map pocket, driver seatback
- Map pocket, front passenger seatback- Mirror, inside rearview manual day/night
- Remote Keyless Entry, extended-range
- Seat adjuster, driver 4-way manual with power height adjustment and ratcheting lumbar
- Seat, rear 60/40 split-folding- Seats, 45/45 front bucket - Shift knob, leather-wrapped
- Steering column, tilt and telescopic- Steering wheel controls, mounted audio controls
- Steering wheel, leather-wrapped- Theft-deterrent system, vehicle, PASS-key III+
- Trunk release, power
- Visors, driver and front passenger vanity mirrors (Illuminated visor vanity mirrors)
- Windows, power with driver Express-Down

Mechanical

- Axle, 3.29 ratio
- Engine, 3.5L Variable Valve Timing V6 SFI (Sedan and Coupe 219 hp [163.0 kW] @ 5900 rpm, 219 lb-ft of torque [297.0 N-m] @ 3200 rpm) (Convertible 217 hp [162.1] @ 5800 rpm, 217 lb-ft of torque [293.6 N-m] @ 4000 rpm)
- Exhaust outlet, single chrome tip- Front wheel drive
- Steering, Hydraulic Power Steering (HPS)
- Suspension, Sport, with thicker direct-acting front stabilizer bar and enhanced steering rack bushing and thicker rear stabilizer bar
- Transmission, 4-speed automatic, electronically controlled with overdrive (Includes Driver Shift Control)

Option Packages

Factory Installed Packages

ENGINE, 3.5L VARIABLE VALVE TIMING V6 SFI

(Sedan and Coupe 219 hp [163.0 kW] @ 5900 rpm, 219 lb-ft of torque [297.0 N-m] @ 3200 rpm) (Convertible 217 hp [162.1] @ 5800 rpm, 217 lb-ft of torque [293.6 N-m] @ 4000 rpm)

TRANSMISSION, 4-SPEED AUTOMATIC, ELECTRONICALLY CONTROLLED WITH OVERDRIVE

(Includes Driver Shift Control)

REMOTE VEHICLE STARTER SYSTEM

included in key fob \$190

STABILITRAK, DYNAMIC CONTROL SYSTEM (DCS) DRIVER-CONTROLLED

SUNROOF, POWER, TILT-SLIDING WITH SUNSHADE

PERFORMANCE RED METALLIC

AUDIO SYSTEM, AM/FM STEREO WITH 6-DISC IN-DASH CD CHANGER

seek-and-scan, digital clock, auto-tone control, Radio Data System (RDS), TheftLock, random disc function, graphic equalizer, Driver Information Center and auxiliary input jack for iPod/MP3 player

-
EBONY, IMPRESSION CLOTH SEAT

TRIM

(Available with (FAD) Trim,
simulated Walnut Burl
accents.)

-
WHEELS, 18" (45.7 CM) 5-SPOKE,
FLANGELESS MACHINE-FACED
ALUMINUM

(Includes (FX3) Stabiltrak and
(QYH) P225/50R18 blackwall
touring tires) \$390

-
Option Packages Total
\$580

Wheels Unlimited

wheelsunltd.com

(219) 464-3736

1151 Morthland Drive

Valparaiso, Indiana 46385

© 2022 AutoRevo - All rights reserved. - Powered by AutoRevo