



2003 Chevrolet Corvette Z06

Website Price \$27,995

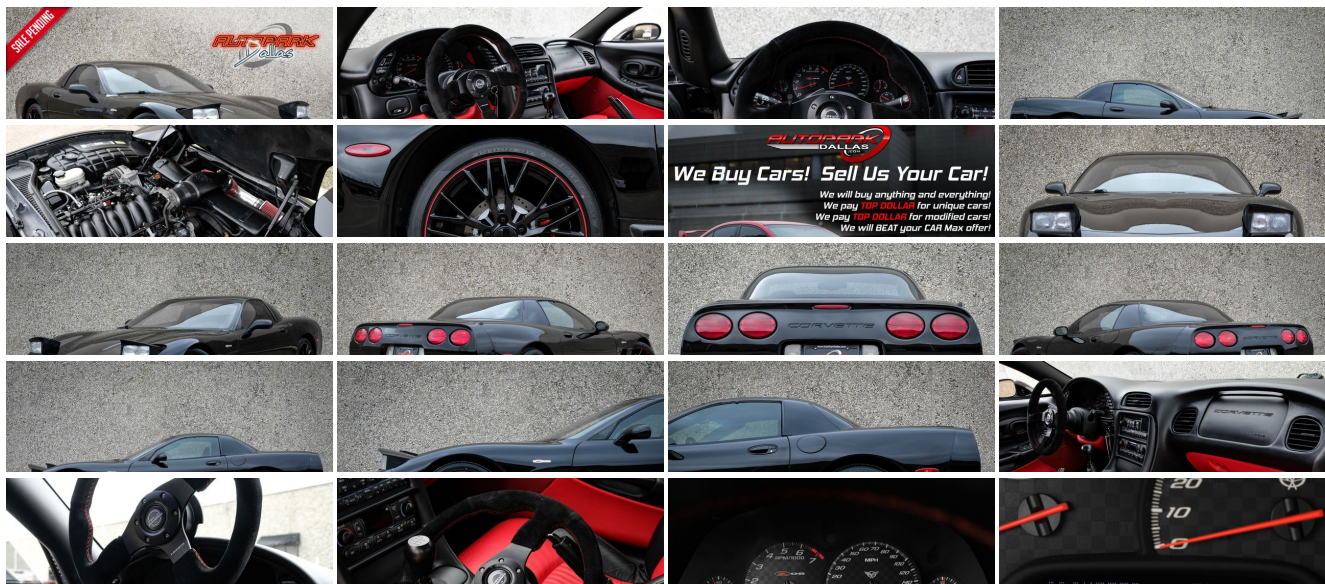
View this vehicle on our website at autoparkdallas.com



(214) 945-2601

2061 S Stemmons Fwy , Lewisville, TX 75067

Photos
Details
Contact



Specifications:

Year:	2003
VIN:	1G1YY12S535118819
Make:	Chevrolet
Model/Trim:	Corvette Z06
Condition:	Pre-Owned
Body:	Coupe
Exterior:	Black
Engine:	Engine, 5.7L LS6 V8 SFI
Interior:	Torch Red/Black Leather
Mileage:	58,323
Drivetrain:	Rear Wheel Drive
Economy:	City 19 / Highway 28

Vehicle Description

AutoPark Dallas is thrilled to offer you this 2003 CORVETTE Z06! Our Corvette over here at APD is in amazing condition for its age! Currently, in an unmodified state, this corvette is exactly how the engineers at GM designed it to be. Near the end of the C5 generation, this Z06 is backed behind the redesign and major improvements from its older years. Thanks to the weight reduction in parts and powered by the LS6 Engine, this Z06 was on par if not better than the previous generation C4 ZR-1 counterpart. GM didn't hold back with making a powerful coupe and this Z06 we have here has been pushed beyond that power with some American Racing Headers and more! Come check out this beautiful Corvette parked in our indoor 16,000 Sq Ft Showroom located in Dallas , Texas amongst our inventory of 100+ other Unique / Modified and Luxury Vehicles!

2003 Chevrolet Corvette

* Clean CarFax !*

Black Exterior

Red Leather Interior

Dual Climate Controls

Push Button Start

Comfort Access Keyless Entry

Daytime Running Lights

6.0L V8 SFI Engine

6-Speed manual transmission

Rear Wheel Drive

Professionally Detailed!

Well Maintained!

* Free CarFax Report !*

AND SO MUCH MORE!!!

Financing is available!

Check out our Payment Calculator to get an estimate on your monthly payments!

OR

Get pre-approved in no time by filling out a credit application on the 'Finance' section of our website!

Check out our Google Reviews by *Clicking* this [LINK!](#)

Referrals and Testimonials is what our business is built on!

The team here at AutoPark Dallas, is dedicated to offering a level of customer service not usually found in the automobile industry. Thanks to years of extensive car buying / selling experience, we pursue quality used and new vehicles that are hand-picked from factory sources. Our love for automobiles and dislike of traditional dealership tactics is what motivates us to provide the service we do! The pride we take in continuing this service long after the vehicle has been delivered is what we strive for! Looking forward to making every effort to see that our customer is completely satisfied and a friend for life!

Pre-purchase inspections are always welcomed!

We also offer airport pick-up, competitive financing options, free CarFax Reports, Car Shipping nationwide, Extended Warranty plans, and so much more!

Trade-In(s) are always accepted or sell us your used car (MODIFIED OR NOT)! Please call or text for more information about Trade-Ins or selling your car to us @ (214) 945-2601!

#(214) 945-2601

Call or Text **Anytime!**

Se habla Español

WE BUY CARS!

WWW.AUTOPARKDALLAS.COM

Installed Options

Interior

- Seat adjuster, power, driver 6-way
- Seats, front leather seating surfaces bucket, Z06-specific-inc: dual density seatback, back angle adjustment & 6-way power driver seat
- Sound system, ETR AM/FM stereo w/CD player-inc: seek-&-scan, digital clock, auto-tone control, speed-compensated volume & TheftLock
- Air conditioning, dual-zone, automatic-inc: individual climate settings for driver & right front passenger, automatic climate control & outside temperature display
- Antenna, fixed-mast
- Console, floor, lockable-inc: integral cupholder, ashtray, coin holder, auxiliary power outlet & cassette/CD storage
- Cruise control, electronic w/set & resume speed-inc: telltale in instrument panel cluster
- Defogger, rear-window, electric-inc: front & side window outlets, driver & front passenger
- Floor mats, carpeted
- Head-Up Display-inc: digital readouts for vehicle speed, engine rpm, a performance up-shift guide for the 6-speed manual transmission, & readings from key gauges including water temperature, oil pressure & fuel
- Instrumentation, analog, electronic-inc: Driver Information Center

Option Packages

Factory Installed Packages

Engine, 5.7L LS6 V8 SFI
(405 HP [302.1 kW] @ 6000 rpm, 400 lb.-ft.
[540.0 N-m] @ 4800 rpm)

- Keyless entry, remote-inc: panic button & trunk/hatch release
- Lighting, interior, courtesy, cargo console & glovebox
- Mirror, inside rearview, manual day/night-inc: dual reading lights
- Sound system feature, Bose speaker & amplifier system
- Steering column, Tilt-Wheel-inc: (NK4) Steering wheel, leather-wrapped rim
- Storage-inc: lockable glovebox, center console & 3 rear compartments
- Theft-deterrent alarm system- Theft-deterrent system, PASS-Key II
- Tire sealant & inflator kit- Trunk, rear-inc: remote release
- Visors, illuminated vanity mirrors, driver & front passenger
- Windows, power-inc: driver & passenger express-down

Exterior

- Daytime running lamps- Fascia, front grille inserts
- Frame, uniframe-inc: corrosion-resistant coating- Glass, Solar-Ray light tinted
- Headlamps, halogen, power-operated retractable- Induction system, outside air
- Mirrors, outside rearview, power, heated, body-color- Paint, basecoat/clearcoat
- Rocker duct, rear, functional rear brake cooling- Roof, fixed- Wipers, intermittent, front

Safety

- Seat adjuster, power, driver 6-way
- Seats, front leather seating surfaces bucket, Z06-specific-inc: dual density seatback, back angle adjustment & 6-way power driver seat
- Sound system, ETR AM/FM stereo w/CD player-inc: seek-&-scan, digital clock, auto-tone control, speed-compensated volume & TheftLock
- Air conditioning, dual-zone, automatic-inc: individual climate settings for driver & right front passenger, automatic climate control & outside temperature display
- Antenna, fixed-mast
- Console, floor, lockable-inc: integral cupholder, ashtray, coin holder, auxiliary power outlet & cassette/CD storage
- Cruise control, electronic w/set & resume speed-inc: telltale in instrument panel cluster
- Defogger, rear-window, electric-inc: front & side window outlets, driver & front passenger
- Floor mats, carpeted
- Head-Up Display-inc: digital readouts for vehicle speed, engine rpm, a performance up-shift guide for the 6-speed manual transmission, & readings from key gauges including water temperature, oil pressure & fuel
- Instrumentation, analog, electronic-inc: Driver Information Center
- Keyless entry, remote-inc: panic button & trunk/hatch release
- Lighting, interior, courtesy, cargo console & glovebox
- Mirror, inside rearview, manual day/night-inc: dual reading lights
- Sound system feature, Bose speaker & amplifier system
- Steering column, Tilt-Wheel-inc: (NK4) Steering wheel, leather-wrapped rim
- Storage-inc: lockable glovebox, center console & 3 rear compartments
- Theft-deterrent alarm system- Theft-deterrent system, PASS-Key II
- Tire sealant & inflator kit- Trunk, rear-inc: remote release
- Visors, illuminated vanity mirrors, driver & front passenger
- Windows, power-inc: driver & passenger express-down

Mechanical

- Active handling, improves traction & enhances vehicle stability
 - Brakes, 4-wheel antilock, 4-wheel disc- Traction control, all-speed
 - Transmission, 6-speed manual- 18.0 gallon fuel tank- Axle, 3.42 ratio, limited slip
 - Engine access, rear opening hood-inc: underhood lamp
 - Engine, 5.7L LS6 V8 SFI (405 HP [302.1 kW] @ 6000 rpm, 400 lb.-ft. [540.0 N-m] @ 4800 rpm)
 - Exhaust outlets, chrome-plated tips- Exhaust, titanium- Rear wheel drive
 - Steering, cooler
 - Suspension, 4-wheel independent-inc: transverse fiberglass leaf springs
 - Tires, front P265/40ZR17, non-EMT- Tires, rear, P295/35ZR18, non-EMT
 - Wheels, 5-spoke, Z06-specific aluminum 17" x 9.5" (43.2 cm x 24.1 cm), front & 18" x 10.5" (45.7 cm x 26.7 cm), rear
 - Z06 Performance Handling Package-inc: stiffer springs, larger stabilizer bar & shock valving
-

AUTOPARK

Dallas

Auto Park Dallas

View this car on our website at autoparkdallas.com/7150504

Website: autoparkdallas.com

Phone: (214) 945-2601

Map: 2061 S Stemmons Fwy, Lewisville, TX 75067

