

1995 Chevrolet Tahoe LS

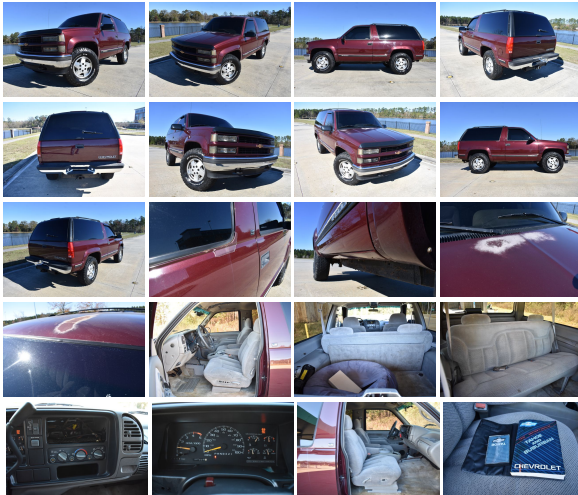
View this car on our website at trucksinlouisiana.com/7149376/ebrochure



Our Price **\$8,500**

Specifications:

Year:	1995
VIN:	1GNEK18K7SJ413503
Make:	Chevrolet
Model/Trim:	Tahoe LS
Condition:	Pre-Owned
Body:	SUV
Exterior:	Burgundy
Interior:	Gray
Mileage:	187,100
Drivetrain:	4 Wheel Drive



WE'VE GOT AROUND
\$13500 IN THIS

A GREAT FIRST VEHICLE
PRICED LESS THAN MANY

IT'S NOT PERFECT SHOW
QUALITY ,BUT RUNS WELL!

You are looking at a 1995 Chevrolet Tahoe 4x4. It is powered with a 5.7L Vortec V8 and automatic transmission. It is equipped with power driver seat, power windows, power locks, power mirrors, tilt, cruise, and receiver hitch. Also

included is the owners manuals.

The interior of this Tahoe is in good shape for the age and mileage. The seats are in good shape. The carpet is in good shape (normal spots for being all original). The radio is missing .It wasn't smoked in.

The exterior of this Tahoe is in average shape for the age and mileage. The truck has spent some time previously in the north. The rocket panels have been changed so they are solid. However, the rear hinges on the lift gate are rusted and will need repair to work properly. There is some paint fading on the hood and there is some spots peeling here and there (typical for an almost 30 year old vehicle) .If you are a serious buyer please call us and we will give you a walk around to make sure it meets your expectations. The windshield is in good shape.

Mechanically this Tahoe starts right up and runs great. The transmission shifts smooth. The a/c blows ice cold. The four wheel drive functions properly. The front end is tight and the tires are decent.

FINANCING: We do not do financing/ in house financing. However, if you have good credit (650 score or higher) we can suggest a lender within the state of Louisiana. If you are outside of Louisiana and have good credit we can also help with locate a lender.

This truck is located @ 13359 Miller Rd. Walker, LA 70785
Exit I-12 at the Walker Rd. Exit 15

If you have any questions about this truck or would like to receive a Carfax, please call one of our Sales Representatives @ 225-445-5381 or 225-326-2639

VISIT WWW.TRUCKSINLOUISIANA.C

It is the customer's responsibility to inspect the truck before agreement to purchase. Upon agreement to purchase, there is a \$500 deposit due within 48 hours. The deposit is non refundable unless a major issue was not disclosed by the seller. The remaining balance is due via cash, cashiers check or bank wire within 5

CHECK, OR BANK WIRE WITHIN 5 days. If you need help with shipping call PJ @ All States Auto Transport: 1-866-342-1082, or 1-712-898-5727. There is also a mandatory \$195 Documentation charge.

At our dealership we work very hard to accurately describe our vehicles through text descriptions and elaborate photos. When you purchase a pre-owned vehicle it is not a new vehicle. Any used vehicle can have normal wear and blemishes. Before placing a bid please read the descriptions thoroughly, view all pictures and call one of our sales representatives for a complete walk a round description of the vehicle. All vehicles are sold as is no warranty.

Vehicle History Report : as Of 07/27/2024



Snapshot

1995 CHEVROLET TAHOE LS



No accidents or damage reported to CARFAX



12 Service history records



6 Previous owners



Personal vehicle



Last owned in Kentucky



187,237 Last reported odometer reading



FREE CARFAX Report

See the full CARFAX Report for additional information

*carfax Snapshot is a reflection of available information on the date the report was pulled. carfax is constantly being updated with new information and is subject to change at any time.

Our Location :



1995 Chevrolet Tahoe LS

Boardwalk Motorcars LLC - 225-326-2639 - View this car on our website at trucksinlouisiana.com/7149376/ebrochure

Installed Options

Interior

- ETR AM/FM stereo w/seek forward/reverse, digital clock, dual front/rear speakers
- Reclining low-back vinyl bucket seats w/easy entry driver/front passenger seat
- (4) Cargo area tie downs- 10" breakaway rearview mirror
- 4-spoke simulated leather steering wheel- Assist handles for outboard passengers
- Black fabric rear quarter trim panels- Cigarette lighter w/illuminated ashtray
- Deluxe HD heater w/side window defoggers- Dual covered pwr points
- Dual in dash cupholders
- Dual padded cloth color-keyed sunshades w/RH visor vanity mirror - Front/rear coat hooks
- Full-floor black rubber floor mat
- Full-length, color-keyed, cloth headliner w/matching retainer moldings
- Gauges-inc: speedometer, tachometer, odometer, trip odometer, voltmeter, fuel level, engine temp, oil pressure
- Key-in-ignition/headlamps-on warning buzzer- Left rear inside spare tire carrier
- Lighting-inc: dome w/dual door jamb switches, reading, ashtray, glove-box, underhood, cargo lamps
- Matching 3 passenger rear bench seat
- Molded plastic door trim panels w/dual integral armrests
- Scotchgard Fabric Protector on all cloth & carpet surfaces
- Single, two-sided key lock system

Exterior

- Black body-side molding w/bright inserts- Black front air dam- Bright wheel lip molding
- Chrome front/rear bumpers w/black rub strips/rear step pad
- Damage-resistant molded grille painted argent- Dual black break-a-way mirrors
- Intermittent windshield wiper system w/pulse washers- Rear panel doors
- Single rectangular halogen headlamps- Solar-Ray tinted glass (all windows)- Solid paint

Safety

- ETR AM/FM stereo w/seek forward/reverse, digital clock, dual front/rear speakers
- Reclining low-back vinyl bucket seats w/easy entry driver/front passenger seat
- (4) Cargo area tie downs- 10" breakaway rearview mirror
- 4-spoke simulated leather steering wheel- Assist handles for outboard passengers
- Black fabric rear quarter trim panels- Cigarette lighter w/illuminated ashtray
- Deluxe HD heater w/side window defoggers- Dual covered pwr points
- Dual in dash cupholders
- Dual padded cloth color-keyed sunshades w/RH visor vanity mirror - Front/rear coat hooks
- Full-floor black rubber floor mat
- Full-length, color-keyed, cloth headliner w/matching retainer moldings
- Gauges-inc: speedometer, tachometer, odometer, trip odometer, voltmeter, fuel level, engine temp, oil pressure
- Key-in-ignition/headlamps-on warning buzzer- Left rear inside spare tire carrier
- Lighting-inc: dome w/dual door jamb switches, reading, ashtray, glove-box, underhood, cargo lamps
- Matching 3 passenger rear bench seat
- Molded plastic door trim panels w/dual integral armrests
- Scotchgard Fabric Protector on all cloth & carpet surfaces
- Single, two-sided key lock system

Mechanical

- (5) 16" x 6.5" silver painted steel wheels w/black center cap
- (5) LT245/75R16C all-season SBR BSW tires- 5-speed manual transmission w/OD
- 5.7L (350) EFI V8 engine - Pwr front disc/rear drum brakes w/4-wheel anti-lock system
- 1.18" diameter front stabilizer bar- 100 amp alternator
- 2-speed New Process 241 transfer case- 30 gallon fuel tank
- 32mm front/rear shock absorbers
- 6250# GVWR (3600 front/3750 rear), springs (3600 front/3750 rear), axles (3925 front/3750 rear)
- 7-wire trailering harness- Front tow hooks- HD 600 CCA battery
- Hypoid drive-leaf spring rear suspension- Independent torsion bar front suspension
- Insta-Trac 4 x 4 system- Pwr steering- Tools-inc: mechanical jack, wheel wrench

Boardwalk Motorcars LLC

trucksinlouisiana.com

225-326-2639

13359 Miller Rd

Walker, LA 70785

© 2024 AutoRevo - All rights reserved. - Powered by AutoRevo