



2013 BMW M3

Website Price \$36,995

View this vehicle on our website at autoparkdallas.com



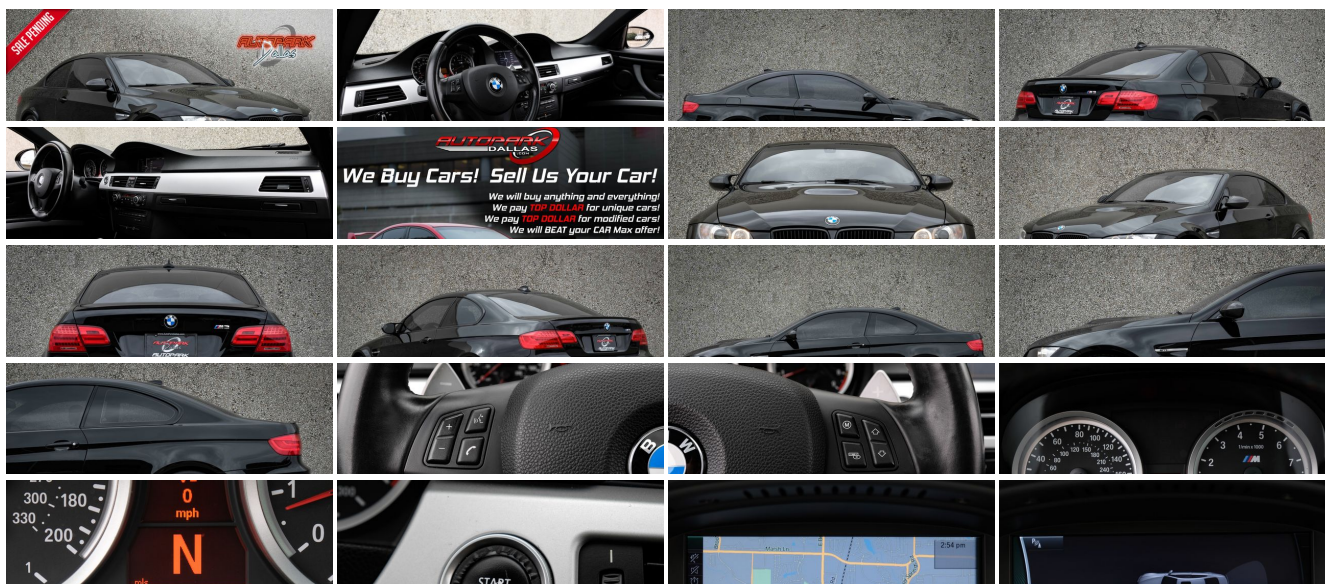
(214) 945-2601

2061 S Stemmons Fwy , Lewisville, TX 75067

Photos

Details

Contact



Specifications:

Year:	2013
VIN:	WBSKG9C54DJ595217
Make:	BMW
Stock:	1067
Model/Trim:	M3
Condition:	Pre-Owned
Body:	Coupe
Exterior:	Jet Black
Engine:	4.0-liter 32-valve 414-hp V-8 engine with M Double-VANOS "steplessly" variable valve timing (2012)
Interior:	Black
Mileage:	61,580
Drivetrain:	Rear Wheel Drive
Economy:	City 14 / Highway 20

Vehicle Description

AutoPark Dallas is thrilled to offer you this Immaculate E92 M3 for sale! Known as the last pure drivers M3. Powered by a rowdy 4.0L V8 that is THE best sounding car BMW has ever made revving up to 8400RPM, putting all that power to the wheels is a 7 Speed Dual Clutch Transmission that is one of the top 5 fastest transmissions ever put into a production car! Still, in its Stock configuration, it's exactly how the engineers in Germany wanted it to be. Optioned in the rare Jet Black Metallic on Black Nappa Leather this car is as sleek as it is fun to drive. Typically this Jet Black paint is in pretty rough shape, but this car is the exception, at 9 years old this M3 is in incredible condition! Come take a look for yourself, Currently, thus M3 is parked here in our indoor 16,000 Sq Ft Showroom located in Dallas, TX. amongst our inventory of 100+ other Performance / Modified and Luxury cars!

2013 BMW M3

Jet Black Metallic Exterior

Black Nappa Leather Interior

Dual-zone Air Conditioning

Cruise Control

Steering Wheel Mounted Controls

Moon Roof

Universal Garage Opener

Manual Mode

Heated Seats

4.0L V8 Engine

7 Speed Dual Clutch Transmission

Rear Wheel Drive

Professionally Detailed

Well Maintained!
* Free CarFax Report !*
AND SO MUCH MORE!!!

Financing is available!

Check out our Payment Calculator to get an estimate on your monthly payments!

OR

Get pre-approved in no time by filling out a credit application on the 'Finance' section of our website!

We also offer MANY different Extended Warranty options!

Check out our Google Reviews by *Clicking* this LINK!

Referrals and Testimonials is what our business is built on!

The team here at AutoPark Dallas, is dedicated to offering a level of customer service not usually found in the automobile industry. Thanks to years of extensive car buying / selling experience, we pursue quality used and new vehicles that are hand-picked from factory sources. Our love for automobiles and dislike of traditional dealership tactics is what motivates us to provide the service we do! The pride we take in continuing this service long after the vehicle has been delivered is what we strive for! Looking forward to making every effort to see that our customer is completely satisfied and a friend for life!

Pre-purchase inspections are always welcomed!

We also offer airport pick-up, competitive financing options, free CarFax Reports, Car Shipping nationwide, Extended Warranty plans, and so much more!

Trade-In(s) are always accepted or sell us your used car (MODIFIED OR NOT)! Please call or text for more information about Trade-Ins or selling your car to us @ (214) 945-2601!

#(214) 945-2601

Call or Text **Anytime!**

Se habla Español

WE BUY CARS!

WWW.AUTOPARKDALLAS.COM

Installed Options

Interior

- 3-spoke, leather-wrapped multi-function M sport steering wheel with controls for audio system, cruise control, and Bluetooth wireless communication for hands-free mobile phone; M color stitching and tilt/telescopic adjustment
- Adjustable seat width and lumbar support- Anthracite and black cloth/leather upholstery
- Central locking system (leaves gas filler door unlocked) and double-lock feature

- Coded Driveaway Protection (prevents engine start when your key, with constantly changing electronic code, is not used)
- Electric interior trunk release- Keyless entry -inc: remote trunk release
- Manually-adjustable front M sport seats including manually adjustable thigh support, power-adjustable backrest side bolsters and 4-way power lumbar support
- Split fold-down rear seats (M3 Convertible fold-down rear seats include two convenience hooks)
- Split fold-down-rear seat- Adjustable front armrest- Ambiance lighting
- Anthracite headliner
- Anti-theft alarm system with keyhead remote operation and interior motion detector
- Auto-dimming rearview mirror
- Automatic climate control includes micro-filter, automatic air recirculation, left/right temperature control, temperature- and volume-controlled rear outlets, windshield misting sensor, MAX A/C, heat at rest, and recall of individual user settings
- Auxiliary pwr outlet- Check Control vehicle monitoring system
- Console valet and cupholders
- Courtesy lights include fade in/fade out, actuation from remote, automatic switch-on when engine is turned off, separately controlled left/right front and rear reading lights, front footwell lighting, and illuminated vanity mirrors
- Cruise control- Door sills with BMW M3 logo- Floor mats- Front seatback storage nets
- Fully finished trunk- M Drive
- M-design instrument cluster with titanium-finish-ringed instrument dials and red needles
- Multi-function remote control
- On-board computer with detailed vehicle information, including travel range on remaining fuel, external temperature (including freezing temperature warning)
- Power front/rear windows with "one-touch" up/down operation (in M3 Coupe, rear windows are stationary and do not include up/down operation)
- Rear window defogger- Service Interval Indicator with miles-to-service display
- Smoker's pkg -inc: cigarette lighter, ash tray
- Tachometer with variable warning zones and oil temperature display
- Titanium Shadow interior trim- Vehicle & key memory

Exterior

- 18" Light alloy Double-spoke wheels style 219M-with performance tires 18 x 8.5, 245/40 18 front and 18 x 9.5, 265/40 18 rear
- Front and rear spoiler (M3 Convertible does not have a rear spoiler)
- Adaptive brakelights- Adaptive light control- Aluminum hood with powerdome
- Automatic tilt-down of passenger's side-view mirror when vehicle is shifted into reverse gear
- Bumper system with aluminum impact absorbers at the front, steel impact absorbers at the rear, and front-compressible elements
- Carbon-fiber roof (not available with moonroof, which requires a steel roof)
- Flared front and rear fenders including wheel arches, vent gills in front fenders with integrated indicator and M3 logo
- Flat-paneled underbody
- Heated side-view mirrors, windshield washer jets and door locks
- M exterior side-view mirrors in body color with double bridge in black
- M rear apron with diffuser- Rain sensor and auto headlights- Shadowline trim
- Titanium Shadow trim- White turn-signal indicators- Xenon headlights

Safety

- 3-spoke, leather-wrapped multi-function M sport steering wheel with controls for audio system, cruise control, and Bluetooth wireless communication for hands-free mobile phone; M color stitching and tilt/telescopic adjustment
- Adjustable seat width and lumbar support- Anthracite and black cloth/leather upholstery
- Central locking system (leaves gas filler door unlocked) and double-lock feature
- Coded Driveaway Protection (prevents engine start when your key, with constantly changing electronic code, is not used)
- Electric interior trunk release- Keyless entry -inc: remote trunk release
- Manually-adjustable front M sport seats including manually adjustable thigh support, power-adjustable backrest side bolsters and 4-way power lumbar support
- Split fold-down rear seats (M3 Convertible fold-down rear seats include two convenience hooks)
- Split fold-down-rear seat- Adjustable front armrest- Ambiance lighting
- Anthracite headliner
- Anti-theft alarm system with keyhead remote operation and interior motion detector
- Auto-dimming rearview mirror
- Automatic climate control includes micro-filter, automatic air recirculation, left/right temperature control, temperature- and volume-controlled rear outlets, windshield misting sensor, MAX A/C, heat at rest, and recall of individual user settings
- Auxiliary pwr outlet- Check Control vehicle monitoring system
- Console valet and cupholders
- Courtesy lights include fade in/fade out, actuation from remote, automatic switch-on when engine is turned off, separately controlled left/right front and rear reading lights, front footwell lighting, and illuminated vanity mirrors

- Cruise control- Door sills with BMW M3 logo- Floor mats- Front seatback storage nets
- Fully finished trunk- M Drive
- M-design instrument cluster with titanium-finish-ringed instrument dials and red needles
- Multi-function remote control
- On-board computer with detailed vehicle information, including travel range on remaining fuel, external temperature (including freezing temperature warning)
- Power front/rear windows with "one-touch" up/down operation (in M3 Coupe, rear windows are stationary and do not include up/down operation)
- Rear window defogger- Service Interval Indicator with miles-to-service display
- Smoker's pkg -inc: cigarette lighter, ash tray
- Tachometer with variable warning zones and oil temperature display
- Titanium Shadow interior trim- Vehicle & key memory

Mechanical

- 6-speed manual transmission with additional oil cooler and heavy-duty dual-disc clutch
- 3-way catalytic converter with heated oxygen sensor (2012)
- 4-wheel BMW M vacuum-assisted ventilated, cross-drilled compound disc brakes with floating brake rotors (2012)
- 4.0-liter 32-valve 414-hp V-8 engine with M Double-VANOS "stelessly" variable valve timing (2012)
- 8 individual throttles, electronically controlled (drive-by-wire) (2012)
- Automatic start/stop function
- Digital Motor Electronics (DME) with on-board diagnostics (2012)
- Distributorless electronic ignition system (2012)
- Gas-pressurized front struts and rear shock absorbers (2012)
- M quad polished stainless steel exhaust tips (2012)
- M suspension with twin-joint spring-strut front axle, subframe, front axle tie-rod and stiffening plate in aluminum, rear axle subframe in steel, track control arm and spring strut in aluminum and lightweight steel construction (2012)
- Oil coolant heat exchanger (2012)- Rear wheel drive
- Vehicle-speed-sensitive variable-assist power steering (M Servotronic) (2012)



Auto Park Dallas

View this car on our website at autoparkdallas.com/7149361

Website: autoparkdallas.com

Phone: (214) 945-2601

Map: [2061 S Stemmons Fwy, Lewisville, TX 75067](#)

