



2009 Chevrolet Corvette w/1LT

Our Price \$31,995

View this vehicle on our website at wheelsunltd.com

Wheels Unlimited

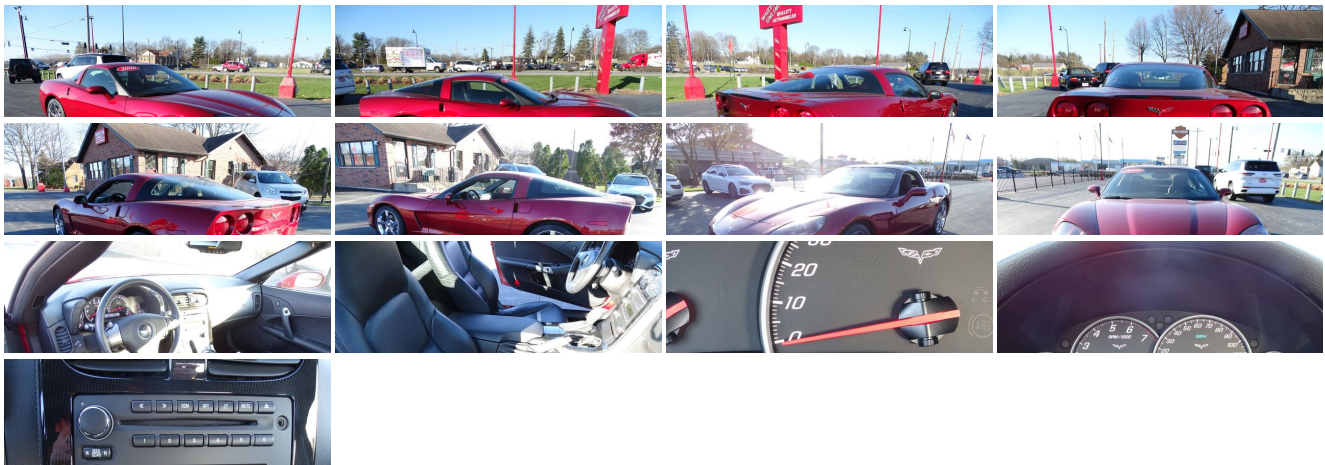
(219) 464-3736

1151 Northland Drive , Valparaiso, Indiana 46385

Photos

Details

Contact



Specifications:

Year:

2009

VIN:	1G1YY25W995112924
Make:	Chevrolet
Stock:	22-037
Model/Trim:	Corvette w/1LT
Condition:	Pre-Owned
Body:	Coupe
Exterior:	Crystal Red Met Tintcoat
Engine:	ENGINE, 6.2L V8 SFI
Interior:	Ebony Leather
Transmission:	TRANSMISSION, 6-SPEED PADDLE SHIFT WITH AUTOMATIC MODES
Mileage:	31,559
Drivetrain:	Rear Wheel Drive
Economy:	City 15 / Highway 25

Vehicle Description

Installed Options

Interior

- Door locks, power programmable with lockout protection
- Air conditioning, dual-zone automatic climate control with individual climate settings for driver and right-front passenger and outside temperature display
- Air filtration system with pollen filter
- Console, floor 2 covered cup holders, ashtray with cigar lighter, auxiliary power outlet and CD storage
- Cruise control, electronic with set and resume speed - Defogger, rear-window, electric
- Floor mats, carpeted- Hatch release, push button open with power hatch pulldown
- Instrumentation, electronic analog with Driver Information Center and 2-line display
- Keyless Access with push button start and 2 remote transmitters that enable automatic door unlock and open by touching door switch
- Lighting, interior with courtesies, cargo and glovebox
- Mirror, inside rearview auto-dimming with compass, includes dual reading lights
- Oil life monitoring system- Seat adjuster, driver 6-way power
- Seats, front bucket with leather seating surfaces includes back angle adjustment
- Steering column, Tilt-Wheel, manual- Steering wheel controls, mounted audio controls
- Steering wheel, 3-spoke leather-wrapped
- Storage with lockable glovebox, center console and 2 rear compartments with covers
- Theft-deterrent system, vehicle push button start, immobilizer and audible visual alarm
- Visors, driver and front passenger illuminated vanity mirrors
- Windows, power with driver and passenger Express-Down

Exterior

- Tires, front P245/40ZR18 Eagle F1 extended mobility
- Tires, rear P285/35ZR19 Eagle F1 extended mobility
- Wheels, 5-split spoke, Silver-painted aluminum 18" x 8.5" (45.7 cm x 21.6 cm), front and 19" x 10.0 " (48.3 cm x 25.4 cm), rear
- Fog lamps, front, integral in front fascia- Glass, Solar-Ray light-tinted
- Headlamps, dual projector lamps, Xenon, High-Intensity Discharge (HID) low-beam tungsten-halogen high-beam with automatic exterior lamp control
- Mirrors, outside heated power-adjustable and driver-side auto-dimming, body- color
- Roof panel, 1-piece body-color, removable- Wipers, front intermittent

Safety

- Door locks, power programmable with lockout protection
- Air conditioning, dual-zone automatic climate control with individual climate settings for driver and right-front passenger and outside temperature display
- Air filtration system with pollen filter
- Console, floor 2 covered cup holders, ashtray with cigar lighter, auxiliary power outlet and CD storage
- Cruise control, electronic with set and resume speed - Defogger, rear-window, electric
- Floor mats, carpeted- Hatch release, push button open with power hatch pulldown
- Instrumentation, electronic analog with Driver Information Center and 2-line display

Option Packages

Factory Installed Packages

ENGINE, 6.2L V8 SFI
(430 hp [320.6 kW] @ 5900 rpm, 424 lb-ft of torque [572.4 N-m] @ 4600 rpm)

TRANSMISSION, 6-SPEED PADDLE SHIFT WITH AUTOMATIC MODES
(Includes (GM8) 2.56 axle ratio.) \$1,250

LPO, 7-SPOKE CHROME WHEELS, 18" (45.7 CM) FRONT AND 19" (48.3 CM) REAR
includes wheels, center caps, lug nuts and caps and wheel lock kit \$3,420

CRYSTAL RED MET TINTCOAT
\$750

PREFERRED EQUIPMENT GROUP
includes Standard Equipment

AUDIO SYSTEM, AM/FM STEREO WITH CD PLAYER AND MP3 PLAYBACK
seek-and-scan, digital clock, auto-tone control, Radio Data System (RDS), automatic volume, TheftLock and auxiliary input jack. Includes (U66) 7-speaker system

EBONY, LEATHER SEATING SURFACES

SEATS, FRONT BUCKET WITH LEATHER SEATING SURFACES
includes back angle adjustment

WHEELS, 5-SPOKE, FORGED CHROME ALUMINUM
18" x 8.5" (45.7 cm x 21.6 cm) front and 19" x 10.0 " (48.3 cm x 25.4 cm) rear \$1,850

Option Packages Total
\$7,270

- Keyless Access with push button start and 2 remote transmitters that enable automatic door unlock and open by touching door switch
- Lighting, interior with courtesy, cargo and glovebox
- Mirror, inside rearview auto-dimming with compass, includes dual reading lights
- Oil life monitoring system- Seat adjuster, driver 6-way power
- Seats, front bucket with leather seating surfaces includes back angle adjustment
- Steering column, Tilt-Wheel, manual- Steering wheel controls, mounted audio controls
- Steering wheel, 3-spoke leather-wrapped
- Storage with lockable glovebox, center console and 2 rear compartments with covers
- Theft-deterrent system, vehicle push button start, immobilizer and audible visual alarm
- Visors, driver and front passenger illuminated vanity mirrors
- Windows, power with driver and passenger Express-Down

Mechanical

- Active handling improves traction and enhances vehicle stability
- Rear axle, 3.42 ratio, limited slip (Included and only available with (MN6) 6-speed manual transmission.)
- Transmission, 6-speed manual, short-throw (Includes (GU6) 3.42 axle ratio.)
- Brakes, 4-wheel antilock, 4-wheel disc- Engine access, rear-opening hood
- Engine, 6.2L V8 SFI (430 hp [320.6 kW] @ 5900 rpm, 424 lb-ft of torque [572.4 N-m] @ 4600 rpm)
- Exhaust, aluminized stainless-steel with 3" polished stainless-steel tips
- Rear wheel drive- Steering, power, speed-sensitive rack-and-pinion, variable ratio
- Suspension, 4-wheel independent includes transverse composite springs

Wheels Unlimited

Wheels Unlimited

View this car on our website at wheelsunltd.com/7149046

Website: wheelsunltd.com

Phone: (219) 464-3736

Map: [1151 Morthland Drive, Valparaiso, Indiana 46385](#)



