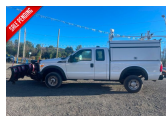


2013 Ford Super Duty F-250 Pickup XL

View this car on our website at upstateautosalesinc.com/7148697/ebrochure



Our Price **\$22,595**

Specifications:

Year:	2013
VIN:	1FT7X2B68DEA64531
Make:	Ford
Stock:	T~87
Model/Trim:	Super Duty F-250 Pickup XL
Condition:	Pre-Owned
Exterior:	White
Engine:	6.2L SOHC 16-VALVE EFI NA V8 FLEX-FUEL ENGINE
Interior:	Gray
Mileage:	118,908
Drivetrain:	4 Wheel Drive
Truck Type:	Commercial Pickup

2013 Ford Super Duty F-250 Pickup XL

Upstate Auto Sales - 518-663-9089 - View this car on our website at upstateautosalesinc.com/7148697/ebrochure

Our Location :



2013 Ford Super Duty F-250 Pickup XL

Upstate Auto Sales - 518-663-9089 - View this car on our website at upstateautosalesinc.com/7148697/ebrochure

Installed Options

Interior

- (2) aux pwr outlets in instrument panel - (4) air registers w/positive shut-off
- 3-blink lane change signal- Air conditioning- Black vinyl full-floor covering
- Color-keyed cloth headliner
- Color-keyed molded door trim panel -inc: hard armrest, grab handle, reflector
- Color-keyed scuff plates- Dash-top tray- Driver & front passenger grab handles
- Driver manual lumbar support- Dual color-keyed coat hooks
- Dual color-keyed vinyl sunvisors -inc: driver-side pocket, passenger-side mirror insert
- Front door operated dome lamp w/time delay off & IP switch - Front map lamps
- Front passenger-side roof ride handle- Glove box
- HD vinyl 40/20/40 split bench front seat -inc: center armrest, cupholder, storage
- Instrument panel mounted storage- Intelligent oil life minder
- Multifunction switch message center -inc: ice blue lighting, 3-button message control on steering wheel, outside temp display
- Overhead console- SecuriLock passive anti-theft system (PATS)
- Tilt/telescoping steering column- Vinyl 60/40 fold-up rear split bench seat

Exterior

- (5) LT245/75R17E all-season BSW tires
- 17" argent painted steel wheels -inc: painted hub covers & center ornaments
- Black door handles- Black molded-in-color grille- Black painted rear bumper
- Black painted steel front bumper w/grained molded-in-color top cover & black lower air dam
- Box-rail & tailgate top-edge moldings- Dual beam jewel-effect headlamps
- Dual rear access doors- Flip-out rear quarter windows- Front fender vents
- Front/rear license plate brackets- Full-size spare tire w/lock & carrier
- Manual telescoping trailer tow mirrors w/manual glass- Pickup box/cargo lights
- Removable locking tailgate w/black handle & TailGate Assist - Solar tinted glass
- Underhood service light- Variable intermittent windshield wipers

Safety

- (2) aux pwr outlets in instrument panel - (4) air registers w/positive shut-off
- 3-blink lane change signal- Air conditioning- Black vinyl full-floor covering
- Color-keyed cloth headliner
- Color-keyed molded door trim panel -inc: hard armrest, grab handle, reflector
- Color-keyed scuff plates- Dash-top tray- Driver & front passenger grab handles
- Driver manual lumbar support- Dual color-keyed coat hooks
- Dual color-keyed vinyl sunvisors -inc: driver-side pocket, passenger-side mirror insert
- Front door operated dome lamp w/time delay off & IP switch - Front map lamps
- Front passenger-side roof ride handle- Glove box
- HD vinyl 40/20/40 split bench front seat -inc: center armrest, cupholder, storage
- Instrument panel mounted storage- Intelligent oil life minder
- Multifunction switch message center -inc: ice blue lighting, 3-button message control on steering wheel, outside temp display
- Overhead console- SecuriLock passive anti-theft system (PATS)
- Tilt/telescoping steering column- Vinyl 60/40 fold-up rear split bench seat

Mechanical

- (2) front tow hooks- 12.5K trailer hitch receiver -inc: 2" hitch - 157-amp HD alternator
- 2-ton mechanical jack- 3.73 axle ratio (REQ: 996 Engine)- 4-wheel drive
- 6-3/4' pickup box -inc: (4) tie-down hooks, partitionable & stackable storage
- 6.2L SOHC 16-valve EFI NA V8 flex-fuel engine - 72 amp/hr (650 CCA) battery
- Front stabilizer bar- HD gas shock absorbers - Manual transfer case & hubs
- Mono-beam front axle w/coil spring suspension- Pwr steering w/steering damper
- Stationary elevated engine idle control (SEIC)
- TorqShift 6-speed automatic transmission w/tow/haul mode (REQ: 996 Engine)
- Trailer tow pkg -inc: 7-wire harness w/relays, 7/4 pin combination connector

Option Packages

Factory Installed Packages

-
6.2L SOHC 16-VALVE EFI NA V8 FLEX-FUEL ENGINE

Upstate Auto Sales

upstateautosalesinc.com

518-663-9089

3511 NY RT 7

Hoosick Falls, New York 12090

© 2023 AutoRevo - All rights reserved. - Powered by AutoRevo