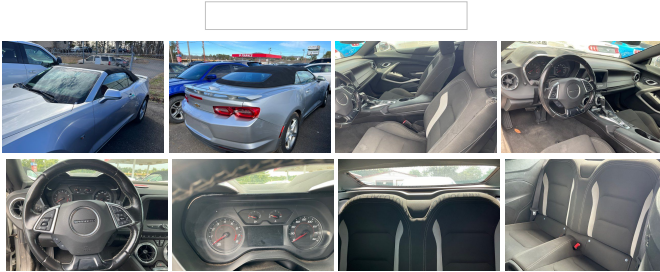


2019 Chevrolet Camaro 1LT

View this car on our website at johngibsonautosales.com/7148608/ebrochure



Specifications:

Year:	2019
VIN:	1G1FB3DX9K0109226
Make:	Chevrolet
Stock:	48829
Model/Trim:	Camaro 1LT
Condition:	Pre-Owned
Body:	Convertible
Exterior:	SILVER
Engine:	ENGINE, 2.0L TURBO, 4-CYLINDER, SIDI, VVT
Interior:	N/A Cloth
Transmission:	TRANSMISSION, 8-SPEED AUTOMATIC
Mileage:	43,752
Drivetrain:	Rear Wheel Drive
Economy:	City 22 / Highway 31

2019 Chevrolet Camaro 1LT

John Gibson Auto Sales - (501) 767-8455 - View this car on our website at johngibsonautosales.com/7148608/ebrochure

Our Location :



2019 Chevrolet Camaro 1LT

John Gibson Auto Sales - (501) 767-8455 - View this car on our website at john Gibsonautosales.com/7148608/ebrochure

Installed Options

Interior

- Seats, Cloth front Sport bucket - Floor mats, carpeted front
- Door locks, power programmable with lockout protection
- Keyless Open and Start includes 2 remote transmitters that enable automatic door unlock and open by touching door switch
- Defogger, rear-window, electric- Seat adjuster, driver, 8-way power
- Seat adjuster, front passenger, 6-way power- Seat, rear fixed- Dead pedal, driver
- Steering wheel, leather-wrapped, flat-bottom
- Steering column, manual rake and telescopic- Speedometer, miles/kilometers
- Driver Information Center, color display- Compass display
- Air conditioning, single-zone automatic climate control
- Power outlet, 1 located on center console
- Windows, power with driver and passenger Express-Down/Up
- Cruise control, electronic with set and resume speed, steering wheel mounted
- Mirror, inside rearview manual day/night, frameless
- Visors, driver and front passenger vanity mirrors- Trunk release, power
- Theft-deterrent system, electrical, unauthorized entry- Glovebox, lockable
- Cup holders, 2 front- Lighting, front reading lamps- Shift knob, leather-wrapped

Exterior

- Wheels, 18" (45.7 cm) Silver-painted aluminum- Tires, 245/50R18, blackwall, all-season
- Convertible top, power-folding, remote control (down only) includes glass rear window with integral defogger
- Spoiler, rear, stanchion- Mirrors, outside power-adjustable, body-color
- Wipers, front variable-speed, intermittent with washers

Safety

- Seats, Cloth front Sport bucket - Floor mats, carpeted front
- Door locks, power programmable with lockout protection
- Keyless Open and Start includes 2 remote transmitters that enable automatic door unlock and open by touching door switch
- Defogger, rear-window, electric- Seat adjuster, driver, 8-way power
- Seat adjuster, front passenger, 6-way power- Seat, rear fixed- Dead pedal, driver
- Steering wheel, leather-wrapped, flat-bottom
- Steering column, manual rake and telescopic- Speedometer, miles/kilometers
- Driver Information Center, color display- Compass display
- Air conditioning, single-zone automatic climate control
- Power outlet, 1 located on center console
- Windows, power with driver and passenger Express-Down/Up
- Cruise control, electronic with set and resume speed, steering wheel mounted
- Mirror, inside rearview manual day/night, frameless
- Visors, driver and front passenger vanity mirrors- Trunk release, power
- Theft-deterrent system, electrical, unauthorized entry- Glovebox, lockable
- Cup holders, 2 front- Lighting, front reading lamps- Shift knob, leather-wrapped

Mechanical

- Transmission, 6-speed manual
- Engine, 2.0L Turbo, 4-cylinder, SIDI, VVT (275 hp [205 kW] @ 5600 rpm, 295 lb-ft of torque [398.3 N-m] @ 3000-4500 rpm)
- Rear axle, 3.27 ratio- Engine air filter life monitor
- Driver Selector Mode up to 4 modes available for various driving conditions - Snow/Ice, Tour, Sport and Track (SS and ZL1 models only)
- Differential, limited slip (Deleted when (MX0) 8-speed automatic transmission is ordered.)
- Battery rundown protection- Rear wheel drive- Suspension, Sport
- Steering, power, variable ratio, electric- Brakes, 4-wheel antilock, 4-wheel disc
- Fueling system, capless- Exhaust, dual-outlet stainless-steel with bright tips

Option Packages

Factory Installed Packages

ENGINE, 2.0L TURBO, 4-CYLINDER, SIDI, VVT
(275 hp [205 kW] @ 5600 rpm, 295 lb-ft of torque
[398.3 N-m] @ 3000-4500 rpm)

TRANSMISSION, 8-SPEED AUTOMATIC
includes transmission oil cooler and (BTV)
remote vehicle starter system **\$1,495**

Option Packages Total
\$1,495

It is the customer's sole responsibility to verify the existence and condition of any equipment listed. Neither the dealership nor AutoRevo is responsible for misprints on prices or equipment. It is the customer's sole responsibility to verify the accuracy of the prices with the dealer. Pricing subject to change without notice.

johngibsonautosales.com

(501) 767-8455

1425 Airport Rd

Hot Springs, Arkansas 71913

© 2024 AutoRevo - All rights reserved. - Powered by [AutoRevo](#)