

## 2016 Jeep Compass High Altitude Edition

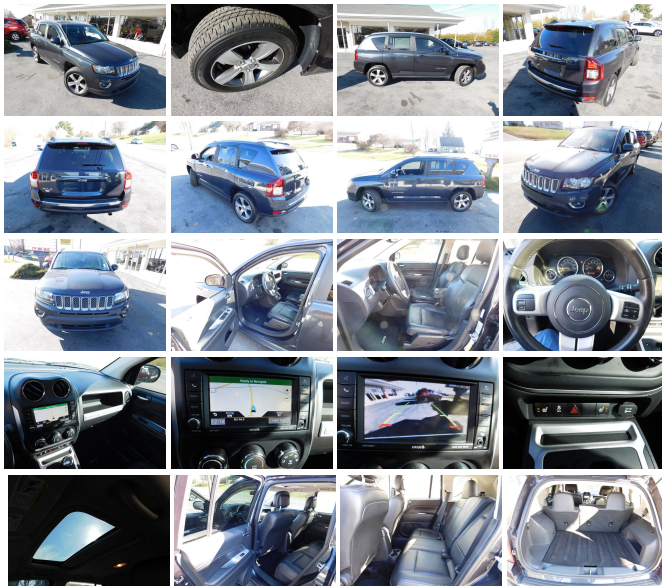
View this car on our website at [oregonpikemotors.com/7147363/ebrochure](http://oregonpikemotors.com/7147363/ebrochure)



Our Price **\$14,995**

### Specifications:

<b>Year:</b>	2016
<b>VIN:</b>	1C4NJDEB6GD572990
<b>Make:</b>	Jeep
<b>Stock:</b>	P9204J
<b>Model/Trim:</b>	Compass High Altitude Edition
<b>Condition:</b>	Pre-Owned
<b>Body:</b>	SUV
<b>Exterior:</b>	GRAY
<b>Engine:</b>	ENGINE: 2.4L I4 DOHC 16V DUAL VVT
<b>Mileage:</b>	62,973
<b>Drivetrain:</b>	4 Wheel Drive
<b>Economy:</b>	City 20 / Highway 26



Stunning in Granite Crystal Metallic Clear Coat, our 2016 Jeep Compass Latitude 4WD SUV provides an ideal blend of amenities, performance, and utility. Powered by a 2.4 Liter 4 Cylinder that offers 172hp while matched with an innovative 6 Speed Automatic transmission. You'll enjoy the crisp punch with this Four Wheel Drive and score near 28mpg on the open road while enjoying the sure-footed stance. Conveying a sense of sporty sophistication with its bright grille, bold lines, sunroof and attractive wheels, our Compass Latitude is a stand-out among the bland competition.

Open the door of our Latitude to find a cabin that has been tailor-made to fit your needs with heated front seats and 60/40 split-folding and reclining rear seats for maximum versatility. Grip the leather-wrapped steering wheel with audio controls and stay safely connected via Uconnect voice command with Bluetooth.

With Jeep, drive with confidence knowing anti-lock brakes, stability and traction control, front-seat side airbags and side curtain airbags are on board to keep your precious cargo safe from harm. A brilliant blend of comfort and convenience, your Compass lets you go farther! Save this Page and Call for Availability. We Know You Will Enjoy Your Test Drive Towards Ownership!

## Vehicle History Report : as Of 04/25/2024

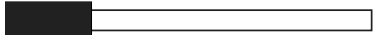
**CARFAX**

### Snapshot

## 2016 JEEP COMPASS HIGH ALTITUDE



**Damage reported: minor damage**



MINOR MODERATE SEVERE

**40** Service history records



**4** Previous owners



Types of owners: Personal lease,  
Personal



**62,973** Last reported odometer reading



**FREE CARFAX Report**

See the full CARFAX Report for additional information

\*carfax Snapshot is a reflection of available information on the date the report was pulled. carfax is constantly being updated with new information and is subject to change at any time.

## Our Location :



2016 Jeep Compass High Altitude Edition

Oregon Pike Motors - 717-859-3600 - View this car on our website at [oregonpikemotors.com/7147363/ebrochure](http://oregonpikemotors.com/7147363/ebrochure)

## Installed Options

### Interior

- Power Rear Windows and Fixed 3rd Row Windows
- Remote Keyless Entry w/Integrated Key Transmitter, Illuminated Entry and Panic Button
- Manual Air Conditioning- Power 1st Row Windows w/Driver 1-Touch Down
- Power Door Locks w/Autolock Feature- 2-Way Driver Seat -inc: Manual Recline
- 4-Way Passenger Seat -inc: Manual Recline and Fore/Aft Movement
- 60-40 Folding Bench Front Facing Manual Reclining Fold Forward Seatback Rear Seat
- Manual Tilt Steering Column
- Gauges -inc: Speedometer, Odometer, Engine Coolant Temp, Tachometer and Trip Odometer
- Voice Recorder- Leather/Metal-Look Steering Wheel- Illuminated Front Cupholder
- Rear Cupholder- 1 12V DC Power Outlet- Cruise Control w/Steering Wheel Controls
- HVAC -inc: Underseat Ducts- Glove Box- Driver Foot Rest
- Interior Trim -inc: Chrome Instrument Panel Insert, Metal-Look Console Insert and Chrome Interior Accents
- Full Cloth Headliner- Urethane Gear Shifter Material
- Day-Night Auto-Dimming Rearview Mirror- Driver And Passenger Visor Vanity Mirrors
- Full Floor Console w/Covered Storage, 1 12V DC Power Outlet and 1 120V AC Power Outlet
- Front Map Lights- Fade-To-Off Interior Lighting
- Full Carpet Floor Covering -inc: Carpet Front And Rear Floor Mats- Carpet Floor Trim
- Cargo Space Lights- Instrument Panel Bin, Driver / Passenger And Rear Door Bins

## Option Packages

### Factory Installed Packages

ENGINE: 2.4L I4 DOHC 16V DUAL VVT

- Delayed Accessory Power- Outside Temp Gauge- Analog Appearance
- Driver And Passenger Heated-Cushion, Driver And Passenger Heated-Seatback
- Manual Anti-Whiplash Adjustable Front Head Restraints and Fixed Rear Head Restraints
- Sliding Front Center Armrest w/Storage- Manual Driver Lumbar Adjust
- Sentry Key Immobilizer- 1 12V DC Power Outlet and 1 120V AC Power Outlet
- Air Filtration

---

## Exterior

- Tires: 225/60R17 BSW AS- Aluminum Wheels
- Tailgate/Rear Door Lock Included w/Power Door Locks
- Wheels: 17" x 6.5" Granite Painted Pocket- Steel Spare Wheel
- Compact Spare Tire Mounted Inside Under Cargo- Clearcoat Paint
- Front Bumper w/Black Rub Strip/Fascia Accent
- Step Bumper w/Black Rub Strip/Fascia Accent- Black Bodyside Cladding
- Black Side Windows Trim and Black Front Windshield Trim - Body-Colored Door Handles
- Body-Colored Power Heated Side Mirrors w/Manual Folding
- Fixed Rear Window w/Fixed Interval Wiper and Defroster- Deep Tinted Glass
- Variable Intermittent Wipers- Fully Galvanized Steel Panels- Lip Spoiler- Chrome Grille
- Liftgate Rear Cargo Access- Auto On/Off Aero-Composite Halogen Headlamps
- Front Fog Lamps- LED Brakelights

---

## Safety

- Power Rear Windows and Fixed 3rd Row Windows
- Remote Keyless Entry w/Integrated Key Transmitter, Illuminated Entry and Panic Button
- Manual Air Conditioning- Power 1st Row Windows w/Driver 1-Touch Down
- Power Door Locks w/Autolock Feature- 2-Way Driver Seat -inc: Manual Recline
- 4-Way Passenger Seat -inc: Manual Recline and Fore/Aft Movement
- 60-40 Folding Bench Front Facing Manual Reclining Fold Forward Seatback Rear Seat
- Manual Tilt Steering Column
- Gauges -inc: Speedometer, Odometer, Engine Coolant Temp, Tachometer and Trip Odometer
- Voice Recorder- Leather/Metal-Look Steering Wheel- Illuminated Front Cupholder
- Rear Cupholder- 1 12V DC Power Outlet- Cruise Control w/Steering Wheel Controls
- HVAC -inc: Underseat Ducts- Glove Box- Driver Foot Rest
- Interior Trim -inc: Chrome Instrument Panel Insert, Metal-Look Console Insert and Chrome Interior Accents
- Full Cloth Headliner- Urethane Gear Shifter Material
- Day-Night Auto-Dimming Rearview Mirror- Driver And Passenger Visor Vanity Mirrors
- Full Floor Console w/Covered Storage, 1 12V DC Power Outlet and 1 120V AC Power Outlet
- Front Map Lights- Fade-To-Off Interior Lighting
- Full Carpet Floor Covering -inc: Carpet Front And Rear Floor Mats - Carpet Floor Trim
- Cargo Space Lights- Instrument Panel Bin, Driver / Passenger And Rear Door Bins
- Delayed Accessory Power- Outside Temp Gauge- Analog Appearance
- Driver And Passenger Heated-Cushion, Driver And Passenger Heated-Seatback
- Manual Anti-Whiplash Adjustable Front Head Restraints and Fixed Rear Head Restraints
- Sliding Front Center Armrest w/Storage- Manual Driver Lumbar Adjust
- Sentry Key Immobilizer- 1 12V DC Power Outlet and 1 120V AC Power Outlet
- Air Filtration

---

## Mechanical

- Transmission: 6-Speed Automatic- Transmission w/Autostick Sequential Shift Control
- Engine: 2.4L I4 DOHC 16V Dual VVT- 3.37 Axle Ratio- GVWR: 4,575 lbs
- 50-State Emissions- Electronic Transfer Case- Automatic Full-Time Four-Wheel Drive
- 60-Amp/Hr 525CCA Maintenance-Free Battery w/Run Down Protection
- 120 Amp Alternator- 925# Maximum Payload- Gas-Pressurized Shock Absorbers
- Front And Rear Anti-Roll Bars- Touring Suspension- Hydraulic Power-Assist Steering
- Single Stainless Steel Exhaust- 13.5 Gal. Fuel Tank- Permanent Locking Hubs
- Strut Front Suspension w/Coil Springs- Multi-Link Rear Suspension w/Coil Springs
- 4-Wheel Disc Brakes w/4-Wheel ABS, Front Vented Discs and Brake Assist
- Hill Start Assist

SUBJECT TO APPROVAL

[oregonpikemotors.com](http://oregonpikemotors.com)

717-859-3600

3919 Oregon Pike

Ephrata, PA 17522

© 2024 AutoRevo - All rights reserved. - Powered by AutoRevo