

2010 Chevrolet HHR LT w/1LT

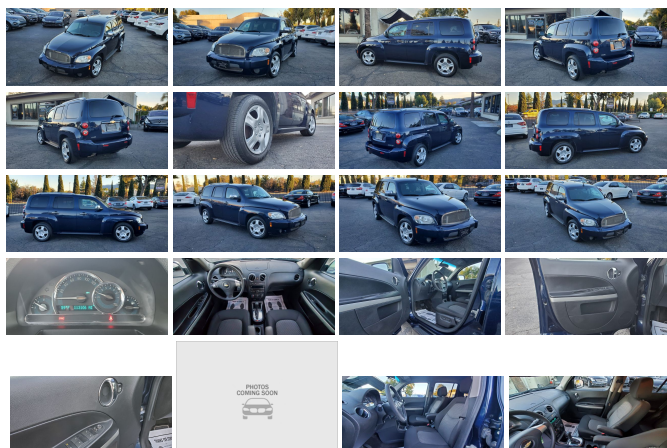
View this car on our website at prestigepre-owned.com/7147273/ebrochure



Our Price **\$5,949**

Specifications:

Year:	2010
VIN:	3GNBABDB5AS567190
Make:	Chevrolet
Model/Trim:	HHR LT w/1LT
Condition:	Pre-Owned
Body:	SUV
Exterior:	Imperial Blue Metallic
Engine:	ENGINE, ECOTEC 2.2L VARIABLE VALVE TIMING DOHC 4-CYLINDER SFI (E85)
Interior:	Ebony Cloth
Transmission:	TRANSMISSION, 4-SPEED AUTOMATIC
Mileage:	113,106
Drivetrain:	Front Wheel Drive
Economy:	City 22 / Highway 30



2010 CHEVROLET HHR LT W/1LT---2.2L ---(**LOW 113K MILES**)--
-CAR COMES WITH A CLEAN TITLE---ACCIDENT FREE---CLEAN
CARFAX---16 SERVICE RECORDS WITH NEW TIRES ALL AROUND
AND FRESH OIL CHANGE!

STUNNING INTERIOR WITH BLACK CLOTH SEATS

EXTREMELY SMOOTH 4 SPEED AUTOMATIC TRANSMISSION

ICE COLD AIR CONDITIONING

IN DASH STEREO WITH SINGLE DISC MP3 AND AM/FM RADIO

POWER DRIVER FRONT SEAT WITH MANUAL PASSENGER SEAT
ADJUSTMENT

POWER WINDOWS ALL AROUND

CRUISE CONTROL

KEY-LESS ENTRY

POWER HEATED MIRRORS

AND MUCH MUCH MORE

VERY ATTRACTIVE (**IMPERIAL BLUE METALLIC EXTERIOR**)--
ON (**BLACK CLOTH INTERIOR**)--SMOG-SAFETY INSPECTION
IS COMPLETED-READY FOR DELIVERY---IT DRIVES GREAT---
NOT TO BE MISSED--TRULY AWESOME CAR!

FINANCING AVAILABLE TO ALL CREDIT LEVELS-LOW RATES -BAD
CREDIT IS WELCOME-EXTENDED SERVICE CONTRACTS UP TO 3

CREDIT IS WELCOME--EXTENDED SERVICE CONTRACTS UP TO 3 YEARS OR 50K MILES--ALL TRADES ARE WELCOME PAID FOR OR NOT--PLEASE CALL US AT 408-379-2277 FOR MORE INFORMATION--YOU CAN ALSO VIEW CARFAX REPORT AT www.prestigepre-owned.com.

At our dealership we work very hard to accurately describe our vehicles through text descriptions and elaborate photos. When you purchase a pre-owned vehicle it is not a new vehicle. Any used vehicle can have normal wear and blemishes. Before placing a bid please read the descriptions thoroughly and view all pictures.

Disclaimer: All vehicles subject to prior sale. We reserve the right to make changes without notice, and are not responsible for errors or omissions. All prices exclude government fees and taxes, any finance charges, and any emissions test charge.

2010 Chevrolet HHR LT w/1LT

Prestige Pre-owned - 877-865-6288 - View this car on our website at prestigepre-owned.com/7147273/ebrochure

Vehicle History Report : as Of 11/27/2022



Snapshot

2010 CHEVROLET HHR LT



No accidents or damage reported to CARFAX



16 Service history records



4 Previous owners



Types of owners: Rental, Personal



Last owned in California



113,106 Last reported odometer reading



FREE CARFAX Report

See the full CARFAX Report for additional information

*carfax Snapshot is a reflection of available information on the date the report was pulled. carfax is constantly being updated with new information and is subject to change at any time.

Our Location :



2010 Chevrolet HHR LT w/1LT

Prestige Pre-owned - 877-865-6288 - View this car on our website at prestigepre-owned.com/7147273/ebrochure

Installed Options

Interior

- Air conditioning, with air filtration- Cargo mat, carpeted rear- Cloth seat trim
- Console, floor with rear and 3 front cup holders - Cruise control
- Defogger, rear-window electric- Door locks, power- Floor mats, carpeted front and rear
- Glovebox, auxiliary
- Instrumentation with speedometer, fuel gauge, tachometer and Driver Information Center with outside temperature, warning messages and programmable menu features
- Map pocket, driver seatback
- Mirror, inside rearview manual day/night (Includes OnStar buttons with (UE1) OnStar. OnStar buttons deleted when (UE0) OnStar delete is ordered.)
- Power outlets, 2 auxiliary, 1 front and 1 rear - Remote Keyless Entry
- Seat adjuster, 8-way power driver (fore/aft, height adjuster, seat cushion tilt, lumbar and manual recline) and manual front passenger, 4-way (fore/aft and recline)
- Seat, front passenger flat-folding seatback
- Seats, front bucket includes 60/40 split-folding rear seat - Steering column, tilt
- Steering wheel, urethane with mounted Driver Information Center and cruise controls
- Theft-deterrent system, vehicle, PASS-Key III+
- Windows, power, include driver Express-Down

Exterior

- Glass, deep-tint second row doors, quarter windows and rear
- Mirrors, outside power-adjustable with body-color cap (Mirror caps are bright chrome when B57 is ordered.)
- Tire sealant and inflator kit in place of spare tire - Tires, P215/55R16, all-season, blackwall
- Wheels, 16" (40.6 cm) steel with fascia spoke painted sterling silver wheel cover
- Wiper, rear- Wipers, front intermittent, speed-sensitive

Safety

- Air conditioning, with air filtration- Cargo mat, carpeted rear- Cloth seat trim
- Console, floor with rear and 3 front cup holders - Cruise control
- Defogger, rear-window electric- Door locks, power- Floor mats, carpeted front and rear
- Glovebox, auxiliary
- Instrumentation with speedometer, fuel gauge, tachometer and Driver Information Center with outside temperature, warning messages and programmable menu features
- Map pocket, driver seatback
- Mirror, inside rearview manual day/night (Includes OnStar buttons with (UE1) OnStar. OnStar buttons deleted when (UE0) OnStar delete is ordered.)
- Power outlets, 2 auxiliary, 1 front and 1 rear - Remote Keyless Entry
- Seat adjuster, 8-way power driver (fore/aft, height adjuster, seat cushion tilt, lumbar and manual recline) and manual front passenger, 4-way (fore/aft and recline)
- Seat, front passenger flat-folding seatback
- Seats, front bucket includes 60/40 split-folding rear seat - Steering column, tilt
- Steering wheel, urethane with mounted Driver Information Center and cruise controls
- Theft-deterrent system, vehicle, PASS-Key III+
- Windows, power, include driver Express-Down

Mechanical

- Battery rundown protection- Brakes, 4-wheel antilock, front disc/rear drum
- Engine, ECOTEC 2.2L Variable Valve Timing DOHC 4-cylinder SFI (E85) includes (E85) FlexFuel (gas ethanol) capability, uses gasoline or E85 fuel (155 hp [115.6 kW] @ 6100 rpm, 150 lb-ft of torque [202.5 N-m] @ 4800 rpm)
- Front wheel drive- Steering, electric power, speed-sensitive- Suspension, Touring
- Transmission, 5-speed manual

Option Packages

Factory Installed Packages

ENGINE, ECOTEC 2.2L VARIABLE VALVE TIMING DOHC 4-CYLINDER SFI (E85)

includes (E85) FlexFuel (gas ethanol) capability, uses gasoline or E85 fuel (155 hp [115.6 kW] @ 6100 rpm, 150 lb-ft of torque [202.5 N-m] @ 4800 rpm)

TRANSMISSION, 4-SPEED AUTOMATIC

includes (AP3) remote vehicle \$1,000

includes (1) 12" remote starter
starter system \$1,000

-
BLUETOOTH FOR PHONE
personal cell phone connectivity to
vehicle audio system and HMI
(Human Machine Interface)

-
IMPERIAL BLUE METALLIC

-
STANDARD PAINT

-
LT PREFERRED EQUIPMENT GROUP
Includes Standard Equipment

-
**AUDIO SYSTEM, AM/FM STEREO WITH
CD PLAYER AND**
MP3 playback, seek-and-scan,
digital clock, auto-tone control,
Radio Data System (RDS),
automatic volume, TheftLock,
auxiliary input jack and 36
cross-band presets

-
EBONY, CLOTH SEAT TRIM

-
Option Packages Total
\$1,000

All interest rates are based on above average credit.

Prestige Pre-owned
prestigepre-owned.com
877-865-6288
3293 S Winchester Blvd
Campbell, CA 95008

© 2022 AutoRevo - All rights reserved. - Powered by AutoRevo