



RPMGARAGETX.COM

11450 SPROWLES ST. DALLAS, TX 75229

972-590-8689

## 2018 Chevrolet Corvette Z06 3LZ 1000hp with Over 30k in Receipts

**Website Price \$89,991**

View this vehicle on our website at [rpmgaragetx.com](http://rpmgaragetx.com)

RPM Garage

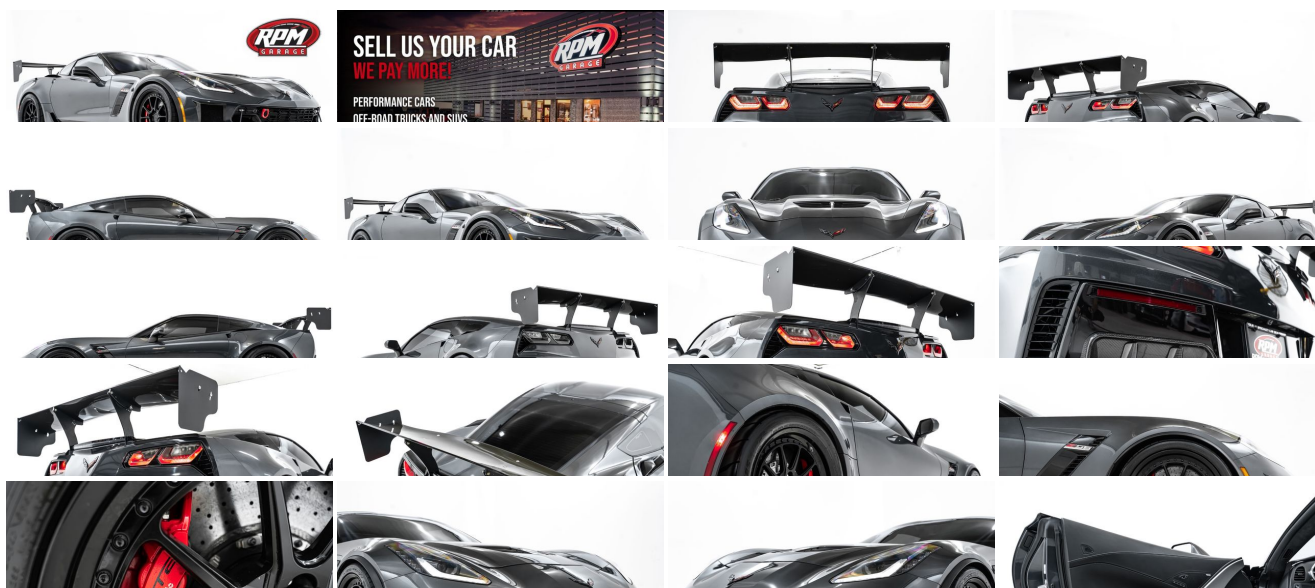
[972-590-8689](tel:972-590-8689)

11450 Sprowles St., Dallas, TX 75229

Photos

Details

Contact



### Specifications:

Year:

2018

<b>VIN:</b>	1G1YU2D66J5600553
<b>Make:</b>	Chevrolet
<b>Model/Trim:</b>	Corvette Z06 3LZ 1000hp with Over 30k in Receipts
<b>Condition:</b>	Pre-Owned
<b>Body:</b>	Coupe
<b>Exterior:</b>	Gray
<b>Engine:</b>	ENGINE, 6.2L (376 CI) SUPERCHARGED V8 DI
<b>Interior:</b>	Black Leather
<b>Transmission:</b>	TRANSMISSION, 8-SPEED PADDLE SHIFT WITH AUTOMATIC MODES
<b>Mileage:</b>	18,985
<b>Drivetrain:</b>	Rear Wheel Drive
<b>Economy:</b>	City 13 / Highway 23

## Vehicle Description

RPM Garage is a specialty car dealership conveniently located off I-35E in Dallas, Texas. With over 100 cars in stock, and new inventory arriving every day, we offer a wide variety of quality vehicles to make your dreams come true. Make sure to stop by and check out our BRAND NEW 40,000 sq/ft warehouse and take your dream car home TODAY!

**LET US FINANCE YOUR DREAMS!**

**CLICK HERE TO BEGIN!**

We are proud to offer you this 2018 Chevrolet Corvette Z06 3LZ 1000hp with Over 30k in Receipts for sale!

This 2018 Chevrolet Corvette Z06 3LZ is a fully-loaded American legend that has been modified to the absolute limit. Under the hood, a supercharged 6.2-liter V8 engine produces 650 horsepower and 650 lb-ft of torque, all of which is sent through an eight-speed automatic transmission to the rear wheels. The engine is not stock, however, having received LG Motorsports Stage 4 package, which has ramped up this beast's output to 823 wheel horsepower and 744 lb-ft of torque—or about 1000 crank horsepower. Included in this package is the LG Motorsports heads & cam package with an LG C7x3B camshaft and LT4 ported & polished cylinder heads, a KONG Stage X ported supercharger & snout, an LG Motorsports 15% overdrive supercharger pulley kit, and LG Super Pro long tube 1 7/8" headers, among many other modifications listed below. This absolute monster comes equipped with 19" BC Forged multi-piece wheels and is finished in Watkins Glen Gray Metallic, giving it an even sleeker and more aggressive look that hints at the power this car produces. Additionally, several cosmetic mods, including an adjustable carbon fiber rear spoiler, the Ground Effects Carbon Flash package, carbon fiber framed front bumper cutouts, and a carbon fiber front lip adorn the exterior of this insane machine, making it even more unique. In the interior, this 3LZ-packaged Corvette offers heated and ventilated leather bucket seats, multi-zone A/C, selectable drive modes, a flat-bottomed leather "Z06" steering wheel, and an infotainment system with Bluetooth, navigation, and a rear camera, truly making this car the complete package.

<https://m.youtube.com/watch?v=n44Bwt17r4U>

LIST OF FEATURES & UPGRADES:

3LZ and Z07 Packages!

Supercharged 6.2-Liter V8 Engine

Eight-Speed Automatic Transmission

LG MOTORSPORTS STAGE 4 (823WHP/744LB-FT)

LG Heads & Cam Package

LG C7x3B Camshaft

LT4 Ported & Polished Cylinder Heads

KONG Stage X Ported Supercharger & Snout

LG DSX Billet Lid

LG LT1/LT4 160 Degree Thermostat

LG C7 Radiator

CPR Heat Exchanger

LG 15% Overdrive Supercharger Pulley Kit

GripTec Pulley & Hub

ATI Lower Pulley

LG Super Pro Long Tube 1 7/8" Headers

LG X-Pipe

LG G2 Super Wires

LG Spark Plug Wire Heat Shields

DSX Low Side Fuel System

Alky Control Methonal Kit - 15/15 Dual Nozzle

Stealth Methonal Tank

Cold Air Intake

Nick Williams 103mm Throttle Body

NGK Plugs

Motul 300V Oil 10w40

TCM Calibration (8-Speed Only)  
ECM Calibration w/HP Tuners  
Quad-Tip Performance Exhaust  
19" BC Forged Multi-Piece Wheels  
Carbon Ceramic Brakes w/Brembo Calipers and Drilled Rotors  
Adjustable Carbon Fiber Rear Spoiler  
Ground Effects Carbon Flash Package  
Carbon Fiber Side Skirts  
Carbon Fiber-Framed Front Bumper Cutouts  
Carbon Fiber Front Lip  
Heated and Ventilated Leather Bucket Seats  
Multi-Zone A/C  
Selectable Drive Modes  
Flat-Bottomed Leather "Z06" Steering Wheel  
Bose Sound System  
Infotainment w/Bluetooth, Navigation, and a Rear Camera  
And Much More!

This high-powered vehicular beast is a one-of-a-kind build designed to be pushed to the limit, making it the perfect car to take home today!

At RPM Garage we love taking care of our customers and we are all about building a relationship with our clients to continue helping them in each and every one of their car needs for years to come. Become a part of our family and visit our showroom today!

We offer free airport pick-up, extended warranties, worldwide shipping, and much more! We welcome third party inspections! We love **TRADE-INS!!**

**EXCELLENT FINANCING OPTIONS!**

**CONTACT OUR SALES TEAM AT:**

**972-590-8689**

sales@rpmgaragetx.com

www.rpmgaragetx.com

## [CLICK HERE TO SELL US YOUR CAR!](#)

We would love to buy your car. Click the text above ^^^ to get an appraisal quote as soon as possible on your car, we would love to check it out. Whether you buy a car from us or not, we will still pay more for it than nearly any other dealership!

## [HOURS OF OPERATION:](#)

Monday - Friday: 10AM - 6PM Saturday: 10AM - 5PM Sunday: Closed

### Vehicle History Report : as Of 07/03/2025



#### Snapshot

#### 2018 CHEVROLET CORVETTE Z06



No accidents or damage reported to CARFAX



13 Service history records



4 Previous owners



Personal vehicle



Last owned in Texas



18,985 Last reported odometer reading



**FREE CARFAX Report**

See the full CARFAX Report for additional information

\*carfax Snapshot is a reflection of available information on the date the report was pulled. carfax is constantly being updated with new information and is subject to change at any time.

### Installed Options

#### Interior

- Console, floor 2 covered cup holders, auxiliary power outlet, USB ports, auxiliary input jack and storage
- Door locks, power programmable with lockout protection- Floor mats, carpeted
- Keyless Open and Start includes 2 remote transmitters that enable automatic door unlock and open by touching door switch
- Luggage shade
- Memory Package, recalls 2 driver "presets" for 8-way power seat, outside mirrors and tilt/telescoping steering column
- Perforated Napa leather seating surfaces- Seats, GT bucket
- Steering column, power tilt and telescopic
- Theft-deterrent system, body security content and unauthorized entry electrical
- Theft-deterrent system, vehicle, push button start, immobilizer and audible visual alarm
- 3LZ interior trim seats, console, door armrests and instrument panel in interior color selected
- Air conditioning, dual-zone automatic climate control with individual climate settings for driver and dedicated passenger controls and outside temperature display
- Air filtration system with pollen filter- Cargo net
- Cruise control, electronic with set and resume speed
- Custom Leather Wrapped Interior Package features leather-wrapped upper instrument panel, upper door trim panels and console storage cover
- Defogger, rear-window, electric- Driver Information Center, color
- Hatch release, push button open
- Head-Up Display with color readouts for street mode, track mode with g-meter, vehicle speed, engine rpm
- Lighting, interior with courtesy, cargo and glovebox
- Mirror, inside rearview auto-dimming, frameless- Oil life monitoring system
- Seat adjusters, driver and passenger 8-way
- Seat adjusters, power bolster and power lumbar
- Seats, heated and vented driver and front passenger
- Steering wheel controls, audio, voice recognition and Driver Information Center
- Steering wheel, 3-spoke leather-wrapped, flat-bottom
- Storage, with electric locking glovebox, behind screen storage, center console and rear compartment with cover
- Sueded Microfiber-Wrapped Upper Interior Trim Package includes headliner, visors, trim above windshield and rear window, A-pillar trim and area around quarter window
- Universal Home Remote includes garage door opener, 3-channel programmable, located on driver visor
- Visors, driver and passenger illuminated vanity mirrors
- Windows, power with driver and passenger Express-Down/In

- Windows, power with driver and passenger Express-Down/Up

## Exterior

- Tires, front P285/30ZR19 and rear P335/25ZR20 Michelin Pilot Super Sport summer-only, run-flat (Do not use summer only tires in winter conditions, as it would adversely affect vehicle safety, performance and durability. Use only GM-approved tire and wheel combinations. Unapproved combinations may change the vehicle's performance characteristics. For important tire and wheel information, go to <https://my.chevrolet.com/learnAbout/chevrolettires> or see your dealer.)
- Wheels, Z06 Pearl Nickel-painted aluminum 19" x 10" (48.3 cm x 25.4 cm) front and 20" x 12" (50.8 cm x 30.48 cm) rear
- Carbon Flash Badge Package- Engine access, rear-opening hood
- Glass, Solar-Ray light-tinted
- Headlamps, high intensity discharge (HID), Xenon LED park and turn signals and Daytime Running Lamps
- Mirrors, outside heated power-adjustable and driver-side auto-dimming, body-color
- Roof panel, carbon fiber, painted body-color, removable- Vents, exterior, carbon flash
- Wipers, front intermittent

## Safety

- Console, floor 2 covered cup holders, auxiliary power outlet, USB ports, auxiliary input jack and storage
- Door locks, power programmable with lockout protection- Floor mats, carpeted
- Keyless Open and Start includes 2 remote transmitters that enable automatic door unlock and open by touching door switch
- Luggage shade
- Memory Package, recalls 2 driver "presets" for 8-way power seat, outside mirrors and tilt/telescoping steering column
- Perforated Napa leather seating surfaces- Seats, GT bucket
- Steering column, power tilt and telescopic
- Theft-deterrent system, body security content and unauthorized entry electrical
- Theft-deterrent system, vehicle, push button start, immobilizer and audible visual alarm
- 3LZ interior trim seats, console, door armrests and instrument panel in interior color selected
- Air conditioning, dual-zone automatic climate control with individual climate settings for driver and dedicated passenger controls and outside temperature display
- Air filtration system with pollen filter- Cargo net
- Cruise control, electronic with set and resume speed
- Custom Leather Wrapped Interior Package features leather-wrapped upper instrument panel, upper door trim panels and console storage cover
- Defogger, rear-window, electric- Driver Information Center, color
- Hatch release, push button open
- Head-Up Display with color readouts for street mode, track mode with g-meter, vehicle speed, engine rpm
- Lighting, interior with courtesy, cargo and glovebox
- Mirror, inside rearview auto-dimming, frameless- Oil life monitoring system
- Seat adjusters, driver and passenger 8-way
- Seat adjusters, power bolster and power lumbar
- Seats, heated and vented driver and front passenger
- Steering wheel controls, audio, voice recognition and Driver Information Center
- Steering wheel, 3-spoke leather-wrapped, flat-bottom
- Storage, with electric locking glovebox, behind screen storage, center console and rear compartment with cover
- Sueded Microfiber-Wrapped Upper Interior Trim Package includes headliner, visors, trim above windshield and rear window, A-pillar trim and area around quarter window
- Universal Home Remote includes garage door opener, 3-channel programmable, located on driver visor
- Visors, driver and passenger illuminated vanity mirrors
- Windows, power with driver and passenger Express-Down/Up

## Mechanical

- Brakes, 4-wheel antilock, 4-wheel disc- Differential, electronic limited slip, rear
- Rear axle, 3.42 ratio, electronic limited slip (eLSD)
- Suspension, Performance Ride and Handling with Magnetic Selective Ride Control
- Transmission, 7-speed manual with Active Rev Matching - Calipers, Red-painted
- Cooler, rear differential- Dry sump oil system
- Engine, 6.2L (376 ci) supercharged V8 DI (650 hp [485 kW] @ 6400 rpm, 650 lb-ft of torque [881 N-m] @ 3600 rpm)
- Exhaust, performance aggressive exhaust sound, with 4" polished stainless-steel tips
- Frame, aluminum structure- Rear wheel drive
- Steering, power, speed-sensitive rack-and-pinion, variable ratio

# Option Packages

## Factory Installed Packages

ENGINE, 6.2L (376 CI) SUPERCHARGED V8 DI (650 hp [485 kW] @ 6400 rpm, 650 lb-ft of torque [881 N-m] @ 3600 rpm)	
TRANSMISSION, 8-SPEED PADDLE SHIFT WITH AUTOMATIC MODES	
	\$1,725
Option Packages Total	\$1,725

RPM Garage

RPM Garage

View this car on our website at [rpmgaragetx.com/7147253](http://rpmgaragetx.com/7147253)

Website: [rpmgaragetx.com](http://rpmgaragetx.com)

Phone: [972-590-8689](tel:972-590-8689)

Map: [11450 Sprowles St, Dallas, TX 75229](#)



