

**paniaguaautos.com**  
(706)529-1919



## 2008 Subaru Impreza i

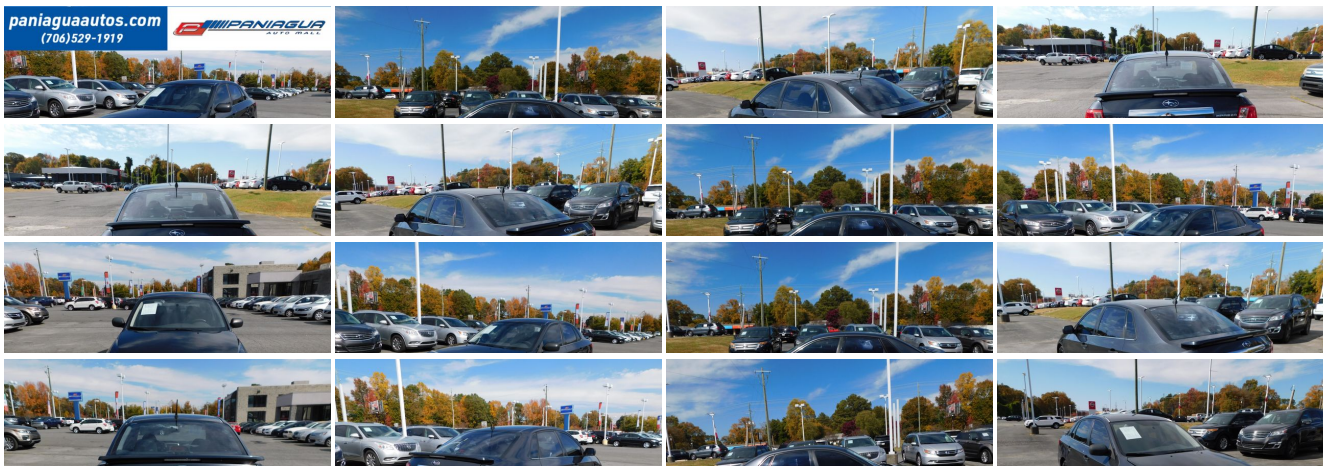
**Our Price \$6,900**

View this vehicle on our website at [paniaguaautos.com](http://paniaguaautos.com)



706-529-1919 & 423-472-4045  
1776 E. Walnut Ave., Dalton, GA 30721

Photos  
Details  
Contact





**Specifications:**

<b>Year:</b>	2008
<b>VIN:</b>	<a href="#">JF1GE61648H503958</a>
<b>Make:</b>	Subaru
<b>Stock:</b>	9034
<b>Model/Trim:</b>	Impreza i
<b>Condition:</b>	Pre-Owned
<b>Body:</b>	Sedan
<b>Exterior:</b>	Black
<b>Engine:</b>	2.5L SOHC SMPI 16-valve 4-cyl boxer engine
<b>Interior:</b>	Black Cloth
<b>Transmission:</b>	AUTOMATIC
<b>Mileage:</b>	121,350
<b>Drivetrain:</b>	All Wheel Drive
<b>Economy:</b>	City 20 / Highway 27

**Vehicle Description**

2008 SUBARU IMPREZA PREMIUM 2.5L 4 CYLINDER AUTOMATIC HURRY IN TODAY AND CHECK OUR MOST RECENT INVENTORY WE HAVE THE BEST DEALS OF THE SEASON COME SEE US SOON

## Installed Options

### Interior

- Carpeted floor mats- Pwr door locks- Remote keyless entry
- 60/40 split fold-down rear seatback w/headrests for all seating positions
- Air conditioning- Ambient temp gauge- Auxiliary power outlet
- Average fuel consumption indicator- Bottle holder in front/rear door storage pocket
- Cruise control- Dome light w/off-delay feature- Dual cup holder in center console
- Dual mode digital trip odometer- Dual visor vanity mirrors w/sliding cover
- Engine immobilizer- Front passenger seatback pocket- Illuminated ignition switch ring
- Leather-wrapped shifter- Pre-wired for security system
- Pwr windows w/driver-side auto-down feature- Rear window defogger
- Sport design front bucket seats w/active head restraints - Tilt steering column
- Woven cloth upholstery

### Exterior

- 16" x 6.5" steel wheels w/covers - Black exterior door handles
- Black foldable pwr mirrors- Daytime running lights- Fog light insert covers
- P205/55R16 all-season tires- Variable intermittent windshield wipers w/washers

### Safety

- Carpeted floor mats- Pwr door locks- Remote keyless entry
- 60/40 split fold-down rear seatback w/headrests for all seating positions
- Air conditioning- Ambient temp gauge- Auxiliary power outlet
- Average fuel consumption indicator- Bottle holder in front/rear door storage pocket
- Cruise control- Dome light w/off-delay feature- Dual cup holder in center console
- Dual mode digital trip odometer- Dual visor vanity mirrors w/sliding cover
- Engine immobilizer- Front passenger seatback pocket- Illuminated ignition switch ring
- Leather-wrapped shifter- Pre-wired for security system
- Pwr windows w/driver-side auto-down feature- Rear window defogger
- Sport design front bucket seats w/active head restraints - Tilt steering column
- Woven cloth upholstery

### Mechanical

- 2.5L SOHC SMPI 16-valve 4-cyl boxer engine
- 4-speed electronic direct control automatic transmission w/Sportshift
- 4-wheel anti-lock braking system (ABS)
- 4-wheel independent strut-type front suspension w/lower L-arm- All-wheel drive
- Double wishbone rear suspension w/upper A-arm
- Electronic brake-force distribution (EBD)- Electronic throttle control (ETC)
- Front ventilated disc/rear drum brakes- Pwr rack-and-pinion steering

We sale used vehicles as is no warranty. We sale extended warranties ask one of our sales rep. for details.

Paniagua Auto Mall

Paniagua Auto Mall

View this car on our website at [paniaguaautos.com/7145576](http://paniaguaautos.com/7145576)

Website: [paniaguaautos.com](http://paniaguaautos.com)

Phone: [706-529-1919](tel:706-529-1919) & [423-472-4045](tel:423-472-4045)

Map: [1776 E. Walnut Ave , Dalton, GA 30721](#)

