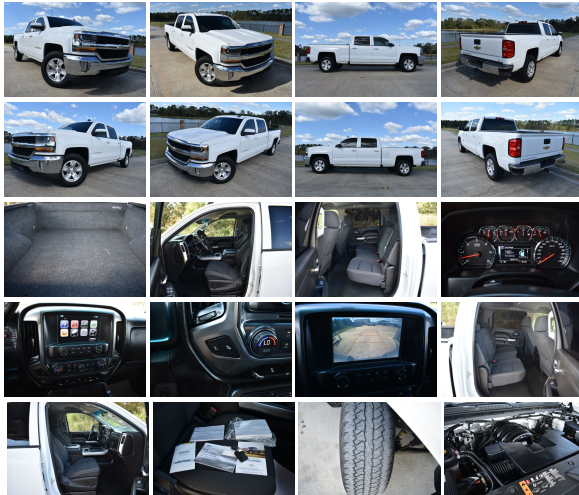


## 2018 Chevrolet Silverado 1500 LT

View this car on our website at [trucksinlouisiana.com/7145190/ebrochure](http://trucksinlouisiana.com/7145190/ebrochure)



Our Price **\$20,500**

Retail Value **\$26,275**

### Specifications:

Year:	2018
VIN:	1GCPREC5JF228572
Make:	Chevrolet
Model/Trim:	Silverado 1500 LT
Condition:	Pre-Owned
Body:	Pickup Truck
Exterior:	White
Engine:	ENGINE, 5.3L ECOTEC3 V8 WITH ACTIVE FUEL MANAGEMENT, DIRECT INJECTION AND VARIABLE VALVE TIMING
Interior:	Gray
Mileage:	160,632
Drivetrain:	Rear Wheel Drive
Economy:	City 16 / Highway 23

**LT PACKAGE**  
**BUCKET SEATS**  
**HIGHWAY MILES**

You are looking at a 2018 Chevrolet Silverado 1500 Crew Cab LT . It is powered with a 5.3L Vortec V8 and automatic transmission. It is equipped with am/fm/cd player, dual power seats, power windows, power locks, power mirrors, tilt, cruise, bed liner, and receiver hitch. Also included is the owners manuals and one

owner's manual and one  
keyless remote.

The interior of this truck is in good shape. The seats are in good shape. The carpet is in good shape. Everything appears to function properly. It was not smoked in.

The exterior of this truck is in good shape. If you are a serious buyer please call us and we will give you a walk around to make sure it meets your expectations. The windshield is in good shape.

Mechanically this truck starts right up and runs great. The transmission shifts smooth. The a/c blows ice cold. The front end is tight and the tires are in good shape.

## NADA VALUES

### RETAIL

\$26,275

**FINANCING:** We do not do financing/ in house financing. However, if you have good credit ( 650 score or higher ) we can suggest a lender within the state of Louisiana. If you are outside of Louisiana and have good credit we can also help with locate a lender.

This truck is located @ 13359  
Miller Rd. Walker, LA 70785

Exit I-12 at the Walker Rd. Exit  
15

If you have any questions  
about this truck or would like  
to receive a Carfax, please call  
one of our

Sales Representatives @ 225-  
445-5381 or 225-326-2639

VISIT [WWW.TRUCKSINLOUISIANA.C](http://WWW.TRUCKSINLOUISIANA.C)

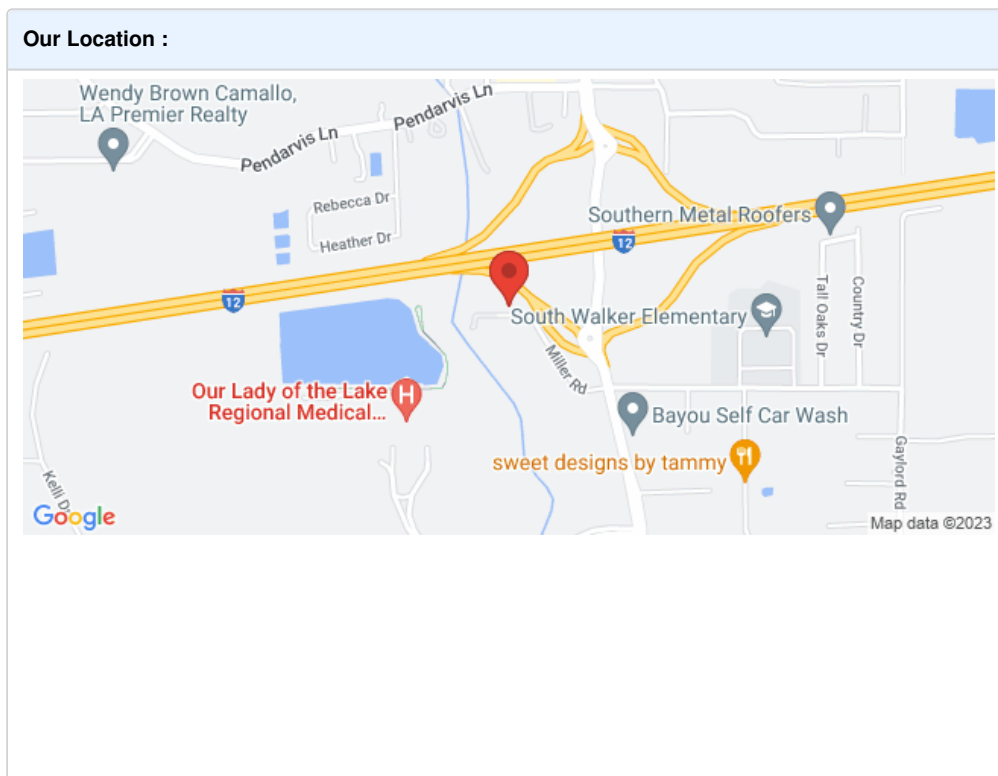
It is the customer's  
responsibility to inspect the  
truck before agreement to  
purchase. Upon agreement to  
purchase, there is a \$500  
deposit due within 48  
hours. The deposit is non  
refundable unless a major  
issue was not disclosed by the  
seller. The remaining balance  
is due via cash, cashiers  
check, or bank wire within 5  
days. If you need help with  
shipping call PJ @ All States  
Auto Transport: 1-866-342-  
1082, or 1-712-898-5727.  
There is also a mandatory  
\$195 Documentation charge.

At our dealership we work  
very hard to accurately  
describe our vehicles through

text descriptions and elaborate photos. When you purchase a pre-owned vehicle it is not a new vehicle. Any used vehicle can have normal wear and blemishes. Before placing a bid please read the descriptions thoroughly, view all pictures and call one of our sales representatives for a complete walk a round description of the vehicle. All vehicles are sold as is no warranty.

2018 Chevrolet Silverado 1500 LT

Boardwalk Motorcars LLC - 225-326-2639 - View this car on our website at [trucksinlouisiana.com/7145190/ebrochure](https://trucksinlouisiana.com/7145190/ebrochure)



2018 Chevrolet Silverado 1500 LT

Boardwalk Motorcars LLC - 225-326-2639 - View this car on our website at [trucksinlouisiana.com/7145190/ebrochure](https://trucksinlouisiana.com/7145190/ebrochure)

## Installed Options

### Interior

- Air conditioning, single-zone- Assist handle, front passenger on A-pillar
- Cruise control, electronic with set and resume speed, steering wheel-mounted
- Door locks, power

- Driver Information Center, 4.2-inch diagonal color display includes driver personalization, warning messages and vehicle information
- Floor covering, color-keyed carpeting with rubberized vinyl floor mats (Double Cab and Crew Cabs include second row floor mats)
- Instrumentation, 6-gauge cluster featuring speedometer, fuel level, engine temperature, tachometer, voltage and oil pressure
- Remote Keyless Entry, with 2 transmitters
- Seat, rear 60/40 folding bench (folds up), 3-passenger (includes child seat top tether anchor) (Not available on Regular Cab models.)
- Seats, front 40/20/40 split-bench, 3-passenger, available in cloth or leather includes driver and front passenger recline with outboard head restraints and center fold-down armrest with storage. Also includes manually adjustable driver lumbar, lockable storage compartment in seat cushion, and storage pockets. (Leather with (KA1) heated seat cushions and seat backs is an available extra charge option with (H1Y) Jet Black leather appointed interior trim and requires (PCM) LT Convenience Package, (PDA) Texas Edition or (PDU) All Star Edition. (Leather with (KA1) heated seat cushions and seat backs is an available extra charge option with (H1Y) Jet Black leather appointed interior trim and requires (PCY) LT Fleet Convenience Package, (PDA) Texas Edition or (PDU) All Star Edition. Includes (AG1) driver 10-way power seat-adjuster with (PCM) LT Convenience Package, (PDA) Texas Edition or (PDU) All Star Edition.) Includes (AG1) driver 10-way power seat-adjuster with (PCY) LT Fleet Convenience Package, (PDA) Texas Edition or (PDU) All Star Edition.)
- Steering column, Tilt-Wheel, manual with theft-deterrent locking feature
- Steering wheel audio controls
- Steering wheel, leather-wrapped with audio and cruise controls
- Visors, driver and front passenger illuminated vanity mirrors
- Windows, power front and rear with driver express up and down and express down on all other windows

---

## Exterior

- Active Aero Shutters, front- Bumper, front chrome- Bumper, rear chrome
- CornerStep, rear bumper- Door handles, body-color- Glass, deep-tinted
- Grille surround, chrome
- Headlamps, high intensity discharge (HID) projector-beam with LED signature DRL
- Lamps, cargo area, cab mounted with switch on center switch bank
- Mirror caps, body-color
- Mirrors, outside heated power-adjustable (includes driver's side spotter mirror) (Body-color.)
- Moldings, bodyside, body color
- Remote Locking Tailgate (Deleted with (ZW9) pickup box delete.)
- Tailgate and bed rail protection cap, top - Tailgate, EZ-Lift and Lower
- Tire carrier lock, keyed cylinder lock that utilizes same key as ignition and door
- Tire, spare P255/70R17 all-season, blackwall (Included and only available with (RBZ) P255/70R17 all-season, blackwall tires.)
- Tires, P255/70R17 all-season, blackwall- Wheel, full-size spare, 17" (43.2 cm) steel
- Wheelhouse liners, rear (Requires Crew Cab or Double Cab model.)
- Wheels, 17" x 8" (43.2 cm x 20.3 cm) bright machined aluminum

---

## Safety

- Air conditioning, single-zone- Assist handle, front passenger on A-pillar
- Cruise control, electronic with set and resume speed, steering wheel-mounted
- Door locks, power
- Driver Information Center, 4.2-inch diagonal color display includes driver personalization, warning messages and vehicle information
- Floor covering, color-keyed carpeting with rubberized vinyl floor mats (Double Cab and Crew Cabs include second row floor mats)
- Instrumentation, 6-gauge cluster featuring speedometer, fuel level, engine temperature, tachometer, voltage and oil pressure
- Remote Keyless Entry, with 2 transmitters
- Seat, rear 60/40 folding bench (folds up), 3-passenger (includes child seat top tether anchor) (Not available on Regular Cab models.)
- Seats, front 40/20/40 split-bench, 3-passenger, available in cloth or leather includes driver and front passenger recline with outboard head restraints and center fold-down armrest with storage. Also includes manually adjustable driver lumbar, lockable storage compartment in seat cushion, and storage pockets. (Leather with (KA1) heated seat cushions and seat backs is an available extra charge option with (H1Y) Jet Black leather appointed interior trim and requires (PCM) LT Convenience Package, (PDA) Texas Edition or (PDU) All Star Edition. (Leather with (KA1) heated seat cushions and seat backs is an available extra charge option with (H1Y) Jet Black leather appointed interior trim and requires (PCY) LT Fleet Convenience Package, (PDA) Texas Edition or (PDU) All Star Edition. Includes (AG1) driver 10-way power seat-adjuster with (PCM) LT Convenience Package, (PDA) Texas Edition or (PDU) All Star Edition.) Includes (AG1) driver 10-way power seat-adjuster with (PCY) LT Fleet Convenience Package, (PDA) Texas Edition or (PDU) All Star Edition.)
- Steering column, Tilt-Wheel, manual with theft-deterrent locking feature
- Steering wheel audio controls
- Steering wheel, leather-wrapped with audio and cruise controls
- Visors, driver and front passenger illuminated vanity mirrors
- Windows, power front and rear with driver express up and down and express down on all other windows

---

## Mechanical

- Alternator, 150 amps
- Battery, heavy-duty 720 cold-cranking amps/80 Amp-hr, maintenance-free with rundown protection and retained accessory power (Included and only available with V8 engines.)
- Brakes, 4-wheel disc with DURALIFE rotors, 4-wheel antilock- Capless Fuel Fill
- Cooling, auxiliary external transmission oil cooler (Included and only available with (L83) 5.3L EcoTec3 V8 engine or (L8B) 5.3L EcoTec3 V8 eAssist engine.)
- Cooling, external engine oil cooler

- Engine, 5.3L EcoTec3 V8 with Active Fuel Management, Direct Injection and Variable Valve Timing includes aluminum block construction (355 hp [265 kW] @ 5600 rpm, 383 lb-ft of torque [518 Nm] @ 4100 rpm; more than 300 lb-ft of torque from 2000 to 5600 rpm) (Standard on C\*15743 models.)
- Exhaust, aluminized stainless-steel muffler and tailpipe
- Frame, fully-boxed, hydroformed front section
- GVWR, 7000 lbs. (3175 kg) (Crew Cab and Double Cab Requires 2WD models and (L83) 5.3L EcoTec3 V8 engine or (L86) 6.2L EcoTec3 V8 engine. Not available with (NHT) Max Trailering Package.)
- Pickup box
- Rear axle, 3.08 ratio (Requires (L83) 5.3L EcoTec3 V8 engine or (PDE) LT eAssist Package. Included with (PDE) LT eAssist Package on CC15543 Crew Cab models. Not available with (RD2) 20" chrome wheels, (RD4) 20" polished-aluminum wheels or 22" LPO wheels. Not available with (G1K) Deep Ocean Blue Metallic or (GPA) Graphite Metallic on C\*1\*\*53 Double Cab models.)
- Rear wheel drive Steering, Electric Power Steering (EPS) assist, rack-and-pinion
- Transmission, 6-speed automatic, electronically controlled with overdrive and tow/haul mode. Includes Cruise Grade Braking and Powertrain Grade Braking

---

Boardwalk Motorcars LLC

[trucksinlouisiana.com](http://trucksinlouisiana.com)

225-326-2639

13359 Miller Rd

Walker, LA 70785

© 2023 AutoRevo - All rights reserved. - Powered by AutoRevo